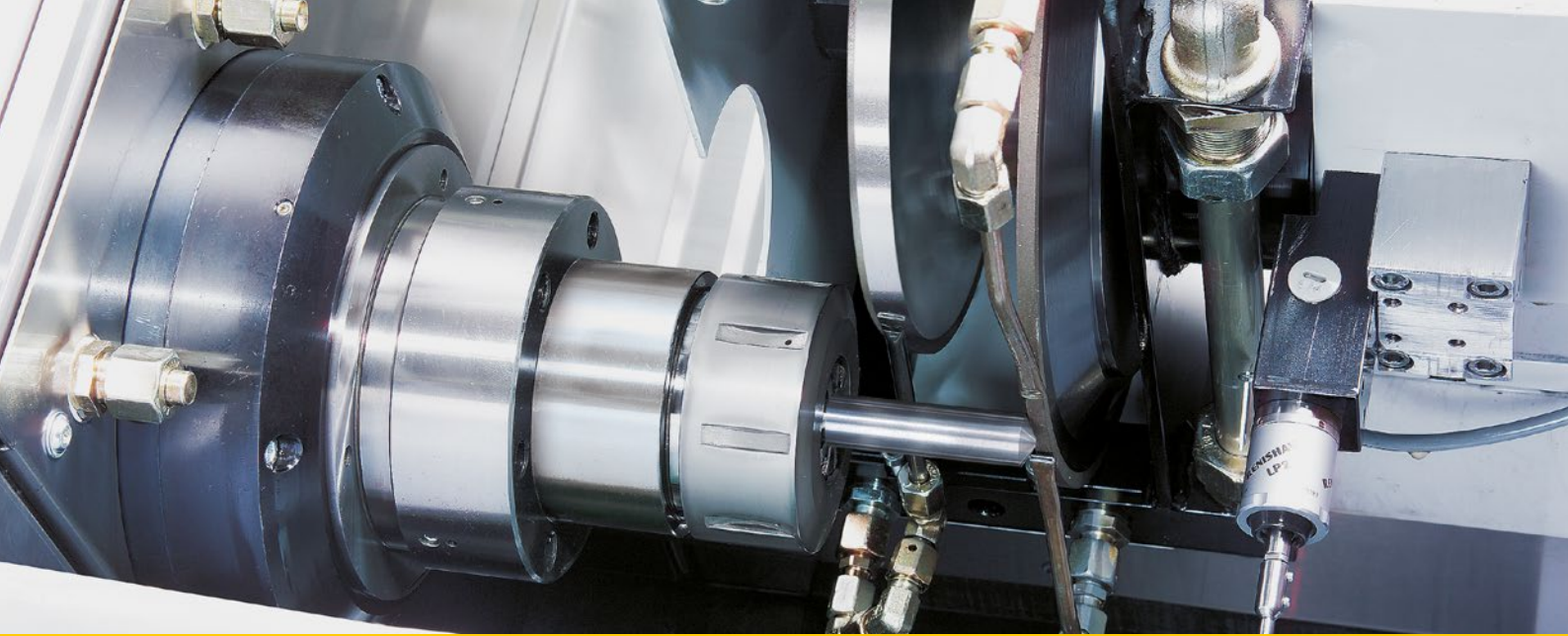


End Profile Grinding Machine SF 40

Flexibel. Accurate. Solid.



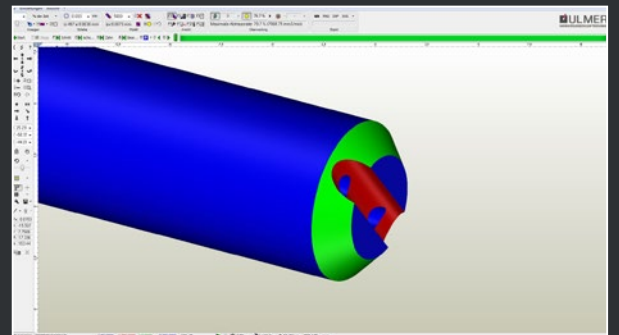


The advantages at a glance

- Grinding unit with a liquid-cooled motor spindle.
- Variable spindle position of the grinding unit for more flexibility, parallel or rectangular to the workpiece spindle.
- Up to four different grinding wheels can be mounted on one flange.
- Use of different chuck clamping systems.
- Measuring probe for detecting the axial workpiece position and angular position of the cooling holes.
- Automatic loading devices are available as an option.
- CNC control NUM Flexium+ with powerful NUM DriveX drives and integrated safety architecture NUM-Safe.

NUMROTOplus®

Programming system with 3D graphics



Workpiece Automation:

Rod loading unit

Workpiece dimensions:

Min. dia. 5 x length 40 mm

Max. dia. 25 x length 250 / 460 mm

Example Capacity:

Max. 500 pieces for dia. 5 mm

SF 40

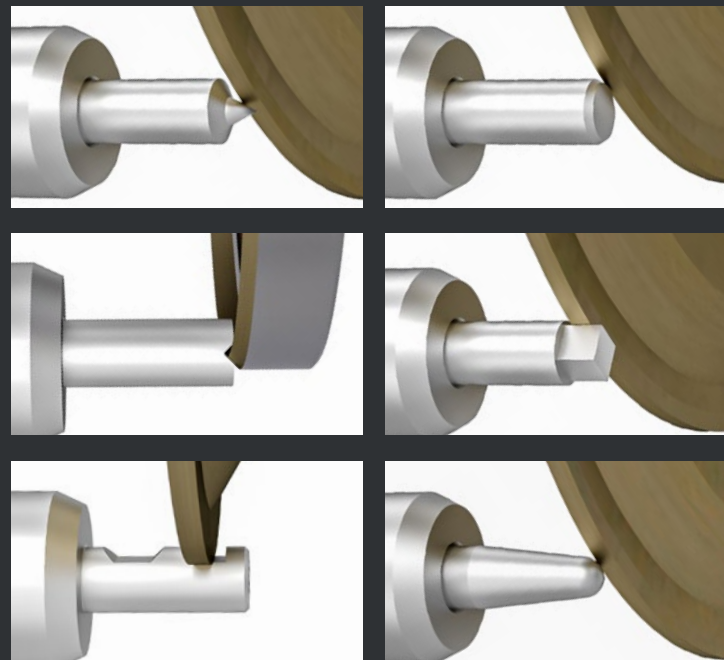
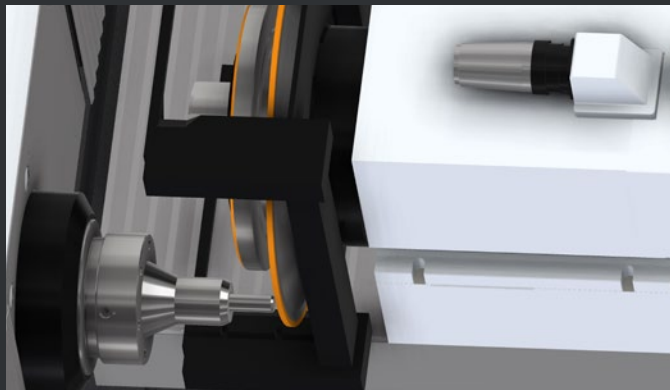
Application examples

Grinding of points, chamfers, radii in any combination at the top of cylindrical tools made from tungsten carbide, HSS or ceramic.

Parallel axis arrangement:

Grinding of point, chamfer, 4- or 6-edge, Weldon, whistle-notch, taper and full radius. Two different grinding wheels in one clamping.

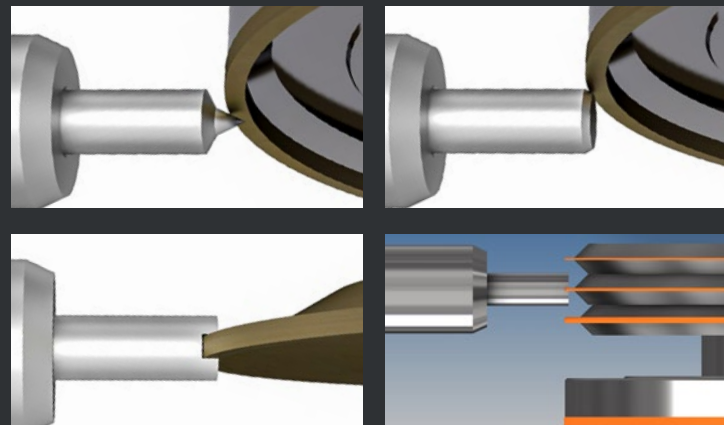
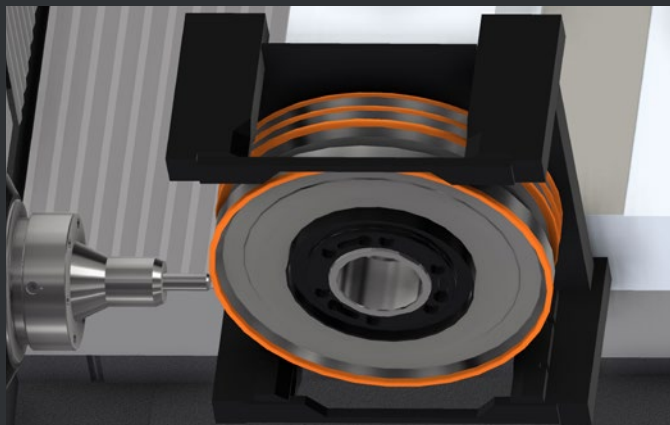
Diameter max. 350 mm.



Vertical axis arrangement:

Production of point, chamfer, rectangle/U-groove. Up to four different grinding wheels in one clamping.

Diameter max. 300 mm.



SF 40

Technical Details

Technical Data SF 40

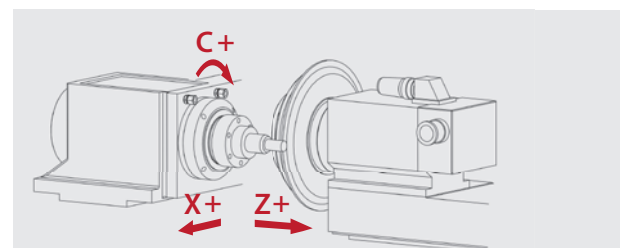
| | | |
|-----------------------------------|----------------------------|--|
| Travels of axes | X- axis | 450 mm |
| | Z- axis | 250 mm |
| Resolution (indirect) | X, Z- axis | 0.001 mm |
| | C- axis | 0.001° |
| Axis drives | X, Z- axis | 2.4 kN |
| | Rapid travel speeds X / Z | 15 / 30 m/min. |
| Grinding spindle | Motorized spindle ø | 140 x 300 mm |
| | Power S6 | 14 kW / 170 Hz |
| | Speed infinitely | 1,000 bis 7,500 min ⁻¹ / 250 Hz |
| | Torque const. | 27 Nm bis 5,000 min ⁻¹ |
| | Grinding wheel dia. max. | 350 mm |
| Workpiece spindle (C-Axis) | Cutting speed | <140 m/s |
| | Internal taper | ISO-50 |
| | Speed max. | 3,000 min ⁻¹ |
| Machine | Torque max. | 28 Nm |
| | Total connected load | 25 kVA |
| | Supply voltage / Frequency | 400 V / 50 Hz |
| Machine | Dimensions W x L x H | 1,900 x 1,900 x 1,900 mm |
| | Weight | approx. 4 t |

Workpiece dimensions (measuring from taper zero line ISO 50)

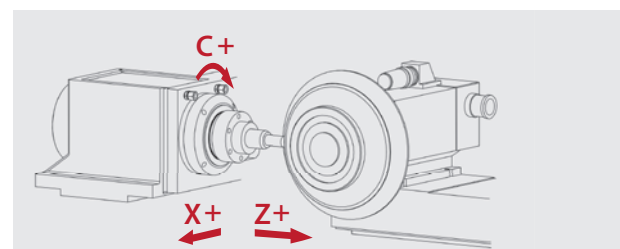
| | | |
|--|-------------|------------------|
| Manual Loading | Dia. max. | 32 mm (50 mm*) |
| | Length max. | 320 mm (700 mm*) |
| | Weight max. | 2.5 kg |
| Autom. Loading (Rod loading unit) | Dia max. | 25 mm |
| | Length max. | 250 / 460 mm |
| | Weight max. | 2.5 kg |

* Special clamping fixtures

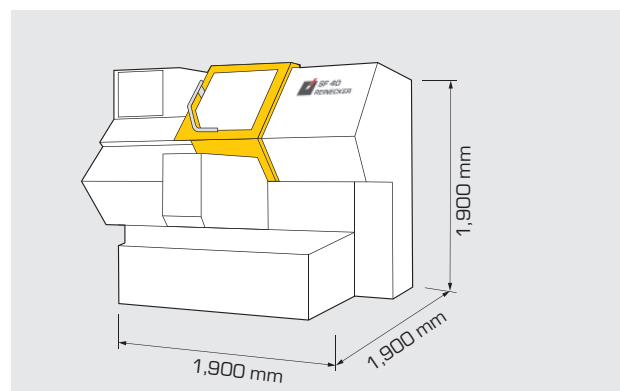
Kinematic (parallel)



Kinematic (rechtwinklig)



Dimensions [in mm]



Ulmer Werkzeugschleiftechnik GmbH & Co.KG

August-Nagel-Str. 9
89079 Ulm-Eisingen, Germany
Phone +49(0)7305/171-324
Fax +49(0)7305/171-328
info@werkzeugschleifen.de
www.werkzeugschleifen.de

ULMER
WERKZEUGSCHLEIFTECHNIK