



Asset-Trade

Assessment & Sale of Used Assets

Ref. Nr.: 1149-12031338

Overview and Technical Data:

INDEX - V200 vertikal Drehmaschine

INDEX

INDEX

Baujahr: Jan. 1988



Description:

Used INDEX V200 CNC lathe vertical

CNC control CNC SIEMENS 840C

Operating hours Total approx. 86646 h

Operating time 7226 hours

Technical data

Work spindle

- spindle bore diameter: 30 mm
- Power P 100 (40%) ED: 7 (10) KW
- Moment P 100 (40%): 33 (49) Nm
- Rotation speed: 5,000 rpm
- max over bed diameter LIN/REV: 270/325 mm
- max chuck diameter: 140 mm
- Spindle corner ISO 702/1 - size A4
- before bearing Bore diameter: 75 mm
- revolver: 1 12xVDI25
- Cross slide (headstock)
- Compression force (X/Y/Z): 5 000 N
- fast feed (X/Y/Z): 30/7.5/30 m/min
- Slide Huber (X/Y/Z): 520/120/200 mm

Tool Table

- Tool system DIN 69880: 30 x 55 mm
- Table dimensions length x height: 1054 x 400 mm
- Number of vertical grooves: 13, width 10 mm
- Number of horizontal grooves: 7, width 10 mm, DIN 650

Dimensions and weight

- length: 2 300 mm
- width: 2 100 mm
- height: 2 350 mm



- Weight: 3 300 kg

According to equipment power: 16-38 KW (20-48 KVA)



Technical Data:

Technical Data:

Steuerung: SINUMERIK 840C
Maschinenstunden: 86646.00 Std.
Spindelstunden: 7226.00 Std.
Drehdurchmesser: 270.00 mm
Spindeldrehzahl: 5000.00 U/Min
Werkzeugkapazität: 12 x
Reitstock: Nein
Lünette: Nein

Dimensions and Weight:

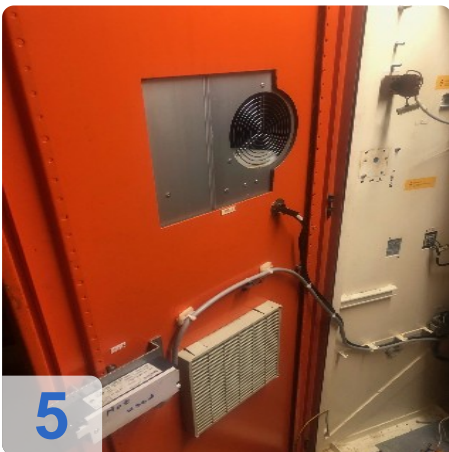
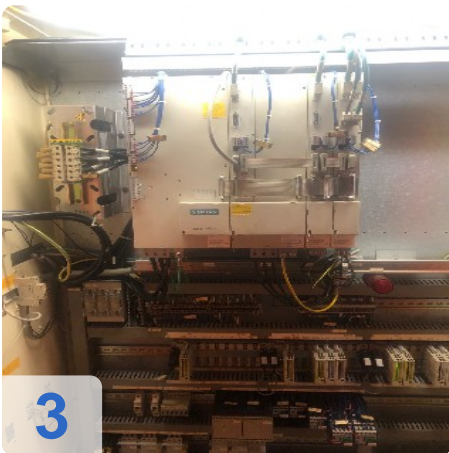
Höhe: 2350 mm
Länge: 2300 mm
Breite: 2100 mm
Gewicht: 3300 kg

Buyer Information:

Zustand: Sehr guten Zustand
Verfügbar: Sofort
Verkauft als:
EXW (ab Werk - Incoterm)
MwSt.: 19 %
Käuferaufgeld: 16 %
Standort: Deutschland



Images:





AS

e

Assets



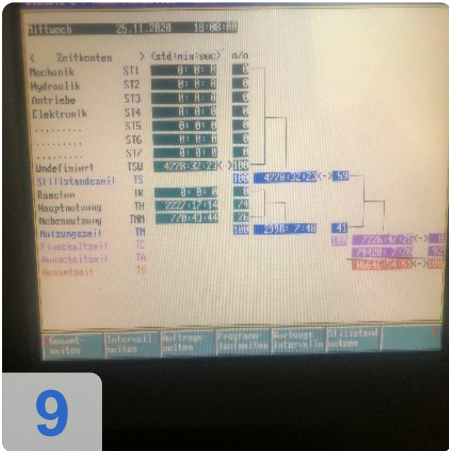
6



7



8



9



Asset-Trade

Assessment & Sale of Used Assets



Asset-Trade

Assessment & Sale of Used Assets



Asset-Trade

**Bewertung & Vermarktung von
Industrieanlagen weltweit**

Am Sonnenhof 16

47800 Krefeld

Deutschland

Tel.: +49 2151 32500 33