



Image not found or type unknown

Ref. No.:

1524-06131824

Overview and Technical Data:

Used Wheel Rim Production Line by Leifeld & Ideal – Model Leifeld TF 650

LEIFELD



Year of Build:
Jan 1992

Description:

Used Wheel Rim Production Line by Leifeld & Ideal – Model
Leifeld TF 650

For sale is another complete production line for manufacturing steel wheel rims, centered around a Leifeld shrinking and expanding machine (Type TF 650 CNC). The line is complemented by a fully equipped welding cell from Ideal and all necessary peripheral systems. Thanks to detailed documentation, including the original machine data card, the line is precisely specified and perfectly suited for steel wheel rim producers.

This production line offers a proven and robust configuration to cover the entire manufacturing process, from sheet metal infeed to the finished wheel rim.

Used Leifeld wheel rim production line (TF 650) with Ideal welding system for sale. Complete production line for steel wheels, incl. bending machine & deburring unit.

Highlights of the Line

- **Core Component:** The renowned **Leifeld TF 650 CNC** shrinking and expanding machine (YOM 1992).
- **Complete Welding Cell:** Including an **Ideal Welding System (AS220AF)** and an **Ideal Weld Seam Deburring Machine (EV0500)**.
- **Comprehensive Peripherals:** With a sheet metal loading station, bending machine, hydraulic power units, and a weld fume extractor.
- **Well-Documented:** Original machine data card and technical documents are available.
- **Includes Workstation:** Comes with workshop equipment, a PC terminal, and a printer.

Detailed Technical Specifications

Component	Manufacturer	Type/Description	Year of Mfg. (YOM)	Technical Data/Notes
Main Machine	Leifeld	Automatic Rim Shrinking & Expanding Machine TF 650 CNC	1992	Workpiece inner Ø: 300 mm, max. sheet thickness: 2.5 mm, clamping force: 70/40 t, connected load: 45 kW, control: Electro-hydraulic
Sheet Metal Loading Station	Systematic	AW12	1991	For infeed of raw material
Bending Machine	Unknown	4-Roll Bending Machine with handling system	Unknown	-
Rim Welding System	Ideal	AS220AF	1991	S/N 213023, for welding the rim shells

Component	Manufacturer	Type/Description	Year of Mfg. (YOM)	Technical Data/Notes
Weld Seam Deburring	Ideal	EV0500	1991	S/N 213024, for finishing the weld seam
Weld Fume Extractor	Keller	Uni-Star-XG	1988	S/N 88/5613
Hydraulic Press	Import (Russia)	PYXE25S	> 35 years	Max. pressing force 25 t
Hydraulic Power Unit 1	Wertenbach	-	1997	-
Hydraulic Power Unit 2	-	-	-	Capacity 250 L of oil
Workshop Equipment	Garant	Drawer Cabinet with 7 drawers	-	-
Office/IT Equipment	Hewlett Packard	Laser Printer LaserJet Pro 400 M401DNE	-	Incl. work terminal with keyboard, mouse, RM barcode scanner

For further technical details, documentation, or to schedule an inspection, please do not hesitate to contact us.

This wheel rim production line represents an excellent opportunity to acquire a proven and comprehensive manufacturing capacity.

Technical Data:

Technical Data:

Control:

[CNC](#)

Buyer Information:

Condition:

[Normal wear](#)

Available:

[Sold](#)

Sold as:

[EXW \(Ex Works - Incoterm\)](#)

VAT:

[19 %](#)

Buyers Premium:

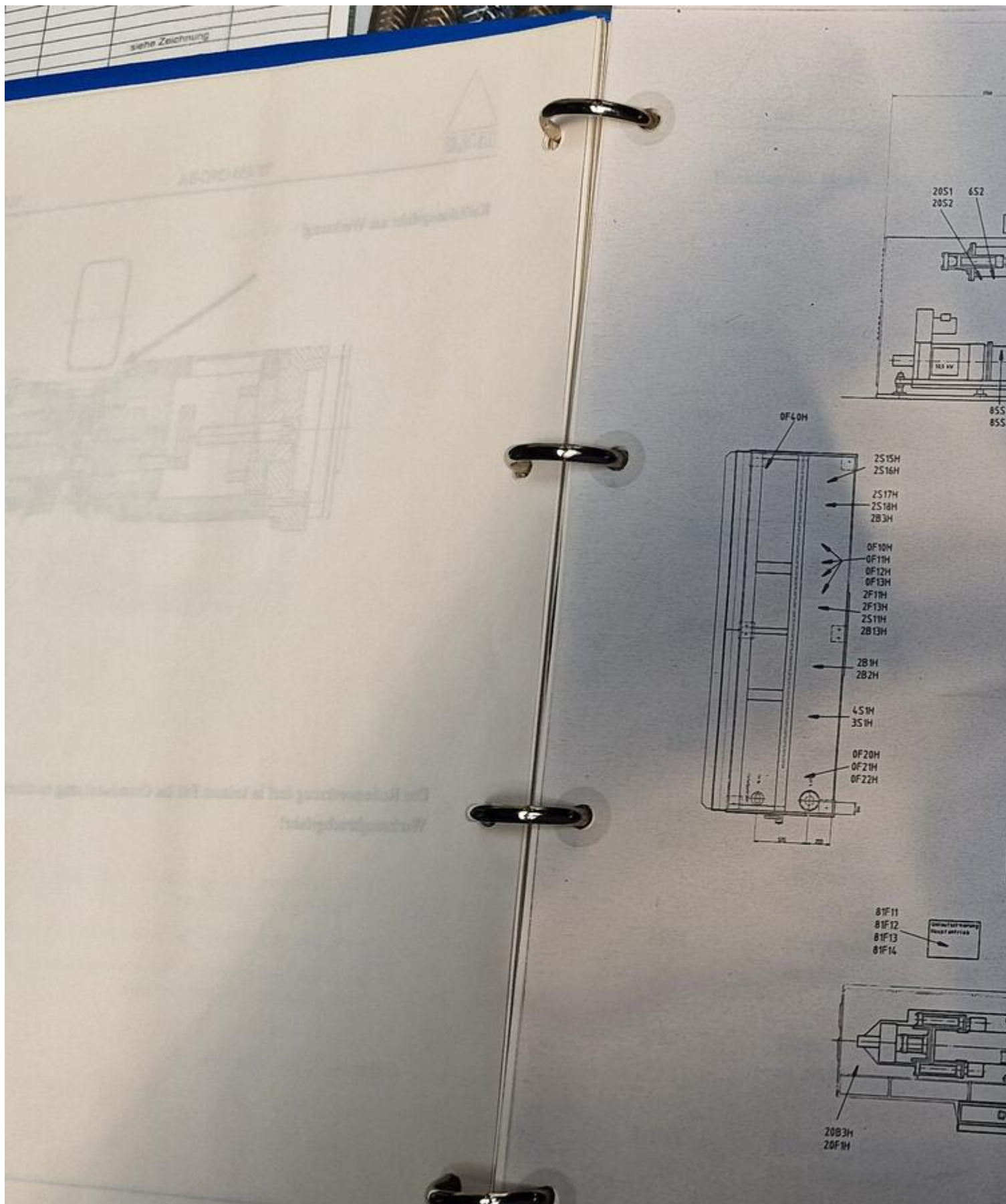
[18 %](#)

Location:

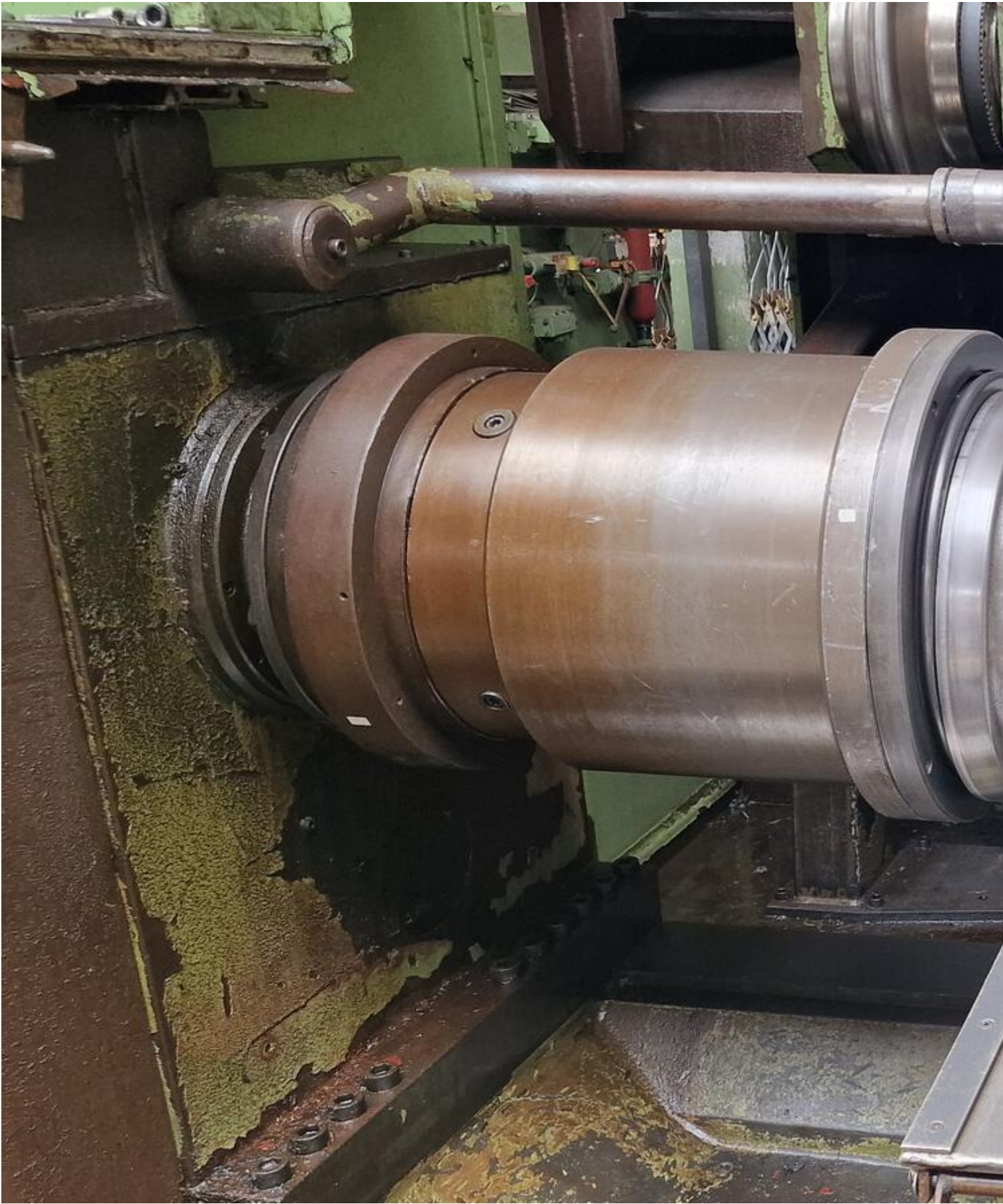
Germany

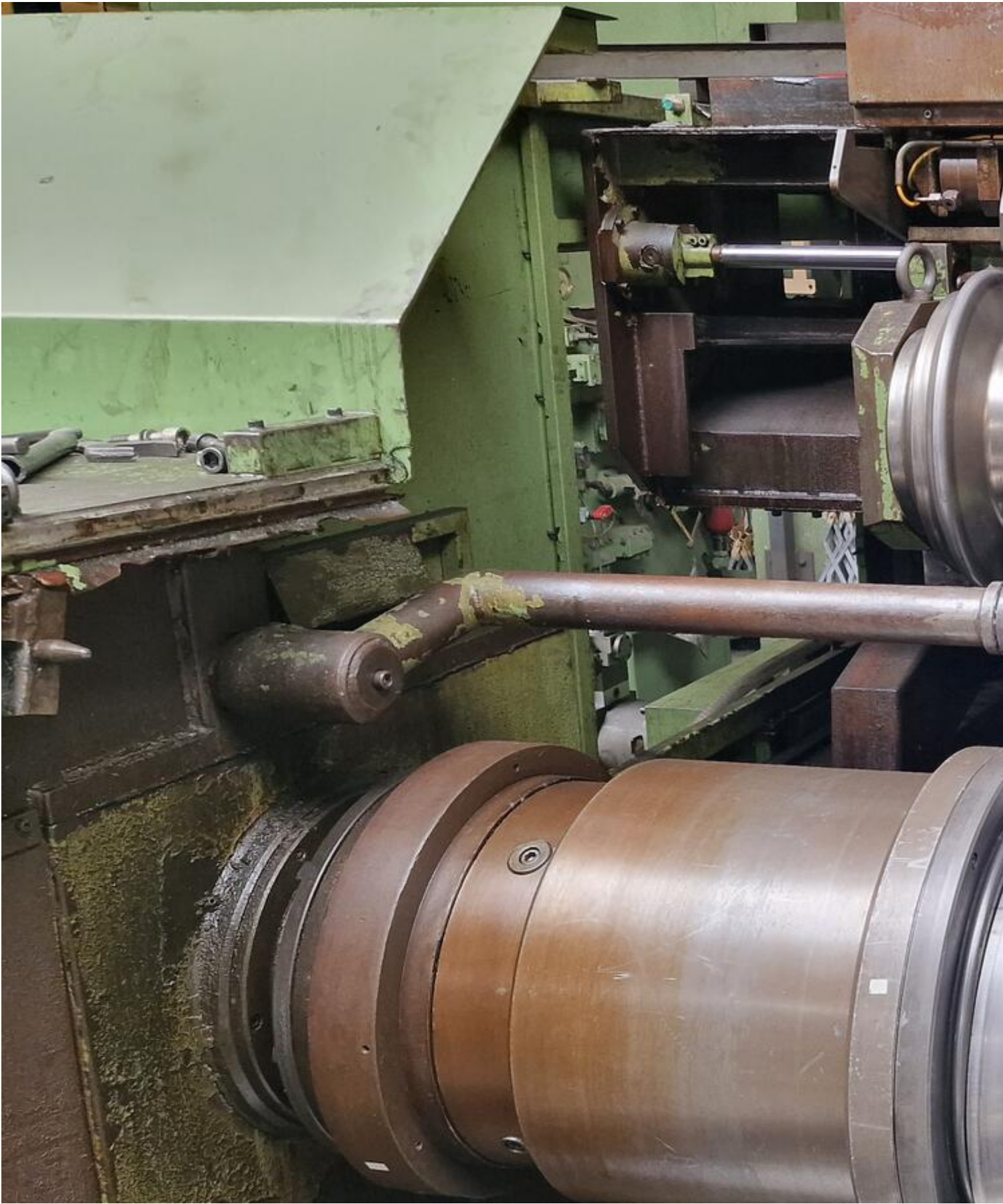
Images:











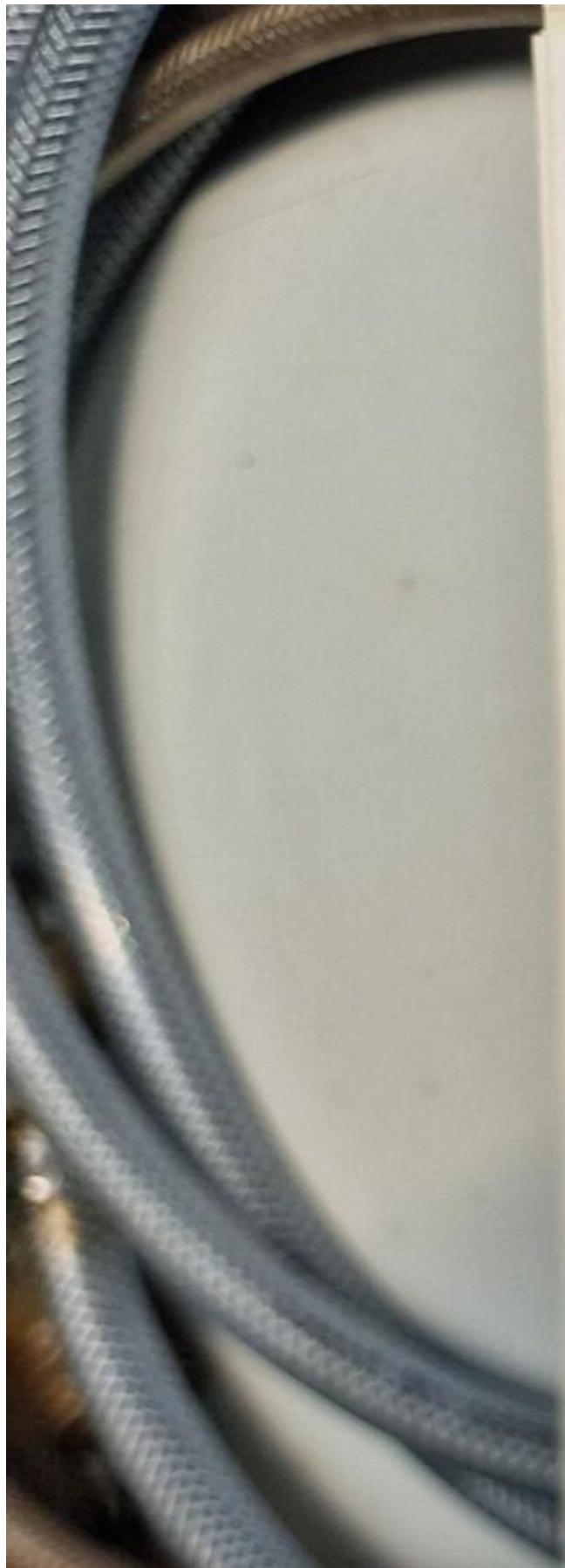








		17	18	19	20	21	22	23	24	25	26	27	28	29	30	31
Kurzzeichen nach AWF 310		AWF® Werkzeugmaschinenkarte für TF 650 CNC - EA														
Benennung		Autom. Felgen-Einzieh- u. Aufweitmaschine														
Typ		TF 650 CNC - EA														
Hersteller		Leifeld u. Co., 4730 Ahlen /Westf.														
Lieferer		Leifeld u. Co., 4730 Ahlen /Westf.														
Technische Daten		Einsatzbereich: Werkstückinnendurchmesser min. 300 mm Werkstückinnendurchmesser max. 571,5 mm Maulweite der Felgenreinge min. 75 mm Maulweite der Felgenreinge max. 410 mm max. umzuformende Materialdicke bezogen auf STW22: - bei Tiefbettfelgenreingfertigung 6,5 mm - bei Schrägschulterfelgenreingfertigung 7,0 mm - bei Drückarbeiten aus der Ronde 12,0 mm max. Umlauf-Durchmesser 1 200 mm Spitzenhöhe der Maschine 700 mm Maschinenbettlänge 4 820 mm Spitzenweite 1 900 mm Ausstoßerhub reitstockseitig / Ausstoßerhub spindelkastenseitig 70/400 mm Ausstoßerhub 1 250 mm														
Grunddaten		Baujahr 1991 Liefer-Tag 30.06.92 Liefer-Nr. Inbetriebn. Standort Zubehör/Sondereinrichtungen 4 hydraulische Rollen- antriebe 1 Transporteinrichtung 4fach Werkzeugmagazin Kombinierte PNC/CNC- Steuerung Masch.-Gruppe Bestell-Tag: 29.11.90 Internes Kennzeichen OM														
Inventar-Nr.		FISCHBACHER														
Kostenstelle		22														
Lichtbild und Grundflächenmaße		22														



TECHNISCHER ÜBERWACHUNGS-VEREIN BAYERN e.V.

Bescheinigung

Certificato / Certificat / Certificado
über die Einstellung von Sicherheitsventilen

Auf Antrag der Firma Mannesmann Rexroth GmbH, 8770 Lohr/Main, wurden
beide auf dem Prüfstand der obengenannten Firma nachstehend bezeichnete
Sicherheitsventile mit Hydrauliköl von dem Unterzeichneten eingestellt:

A solicitud de la sociedad
Mannesmann Rexroth GmbH,
D-8770 Lohr/Main,
son ajustadas este día sobre el
banco de prueba de la firma
arriba mencionada y utilizando
aceite hidráulico las válvulas de
seguridad por el infrascrito:

Su richiesta della ditta
Mannesmann Rexroth GmbH,
D-8770 Lohr/Main,
sono state tarate sul banco
prova della ditta suddetta le val-
vole di sicurezza con olio oleodi-
namico tramite i sottoscritto:

En aplicación de
Reglamento Técnico de
Seguridad, se han
ajustado en el banco de
prueba de la firma
arriba mencionada las
válvulas de seguridad
con aceite hidráulico de
la siguiente manera:

Mannesmann Rexroth GmbH

Hersteller:

Mannesmann Rexroth GmbH



Asset-Trade

Assessment and Sale of Used Assets world wide

Am Sonnenhof 16

47800 Krefeld

Germany

Tel.: +49 2151 32500 33

Fax.: +49 2151 65 29 22

Email: info@asset-trade.de

Web.: <https://mail.asset-trade.de/en>

Ref. No.:
1524-06131824

Overview and Technical Data:

Used Wheel Rim Production Line by Leifeld & Ideal – Model Leifeld TF 650

LEIFELD



Year of Build:
Jan 1992

Description:

Used Wheel Rim Production Line by Leifeld & Ideal – Model Leifeld TF 650

For sale is another complete production line for manufacturing steel wheel rims, centered around a Leifeld shrinking and expanding machine (Type TF 650 CNC). The line is complemented by a fully equipped welding cell from Ideal and all necessary peripheral systems. Thanks to detailed documentation, including the original machine data card, the line is precisely specified and perfectly suited for steel wheel rim producers.

This production line offers a proven and robust configuration to cover the entire manufacturing process, from sheet metal infeed to the finished wheel rim.

Used Leifeld wheel rim production line (TF 650) with Ideal welding system for sale. Complete production line for steel wheels, incl. bending machine & deburring unit.

Highlights of the Line

- **Core Component:** The renowned **Leifeld TF 650 CNC** shrinking and expanding machine (YOM 1992).
- **Complete Welding Cell:** Including an **Ideal Welding System (AS220AF)** and an **Ideal Weld Seam Deburring Machine (EV0500)**.
- **Comprehensive Peripherals:** With a sheet metal loading station, bending machine, hydraulic power units, and a weld fume extractor.
- **Well-Documented:** Original machine data card and technical documents are available.
- **Includes Workstation:** Comes with workshop equipment, a PC terminal, and a printer.

Detailed Technical Specifications

Component	Manufacturer	Type/Description	Year of Mfg. (YOM)	Technical Data/Notes
Main Machine	Leifeld	Automatic Rim Shrinking & Expanding Machine TF 650 CNC	1992	Workpiece inner Ø: 300 mm, max. sheet thickness: 2.5 mm, clamping force: 70/40 t, connected load: 45 kW, control: Electro-hydraulic
Sheet Metal Loading Station	Systematic	AW12	1991	For infeed of raw material
Bending Machine	Unknown	4-Roll Bending Machine with handling system	Unknown	-
Rim Welding System	Ideal	AS220AF	1991	S/N 213023, for welding the rim shells

Component	Manufacturer	Type/Description	Year of Mfg. (YOM)	Technical Data/Notes
Weld Seam Deburring	Ideal	EV0500	1991	S/N 213024, for finishing the weld seam
Weld Fume Extractor	Keller	Uni-Star-XG	1988	S/N 88/5613
Hydraulic Press	Import (Russia)	PYXE25S	> 35 years	Max. pressing force 25 t
Hydraulic Power Unit 1	Wertenbach	-	1997	-
Hydraulic Power Unit 2	-	-	-	Capacity 250 L of oil
Workshop Equipment	Garant	Drawer Cabinet with 7 drawers	-	-
Office/IT Equipment	Hewlett Packard	Laser Printer LaserJet Pro 400 M401DNE	-	Incl. work terminal with keyboard, mouse, RM barcode scanner

For further technical details, documentation, or to schedule an inspection, please do not hesitate to contact us.

This wheel rim production line represents an excellent opportunity to acquire a proven and comprehensive manufacturing capacity.

Technical Data:

Technical Data:

Control:

[CNC](#)

Buyer Information:

Condition:

[Normal wear](#)

Available:

[Sold](#)

Sold as:

[EXW \(Ex Works - Incoterm\)](#)

VAT:

[19 %](#)

Buyers Premium:

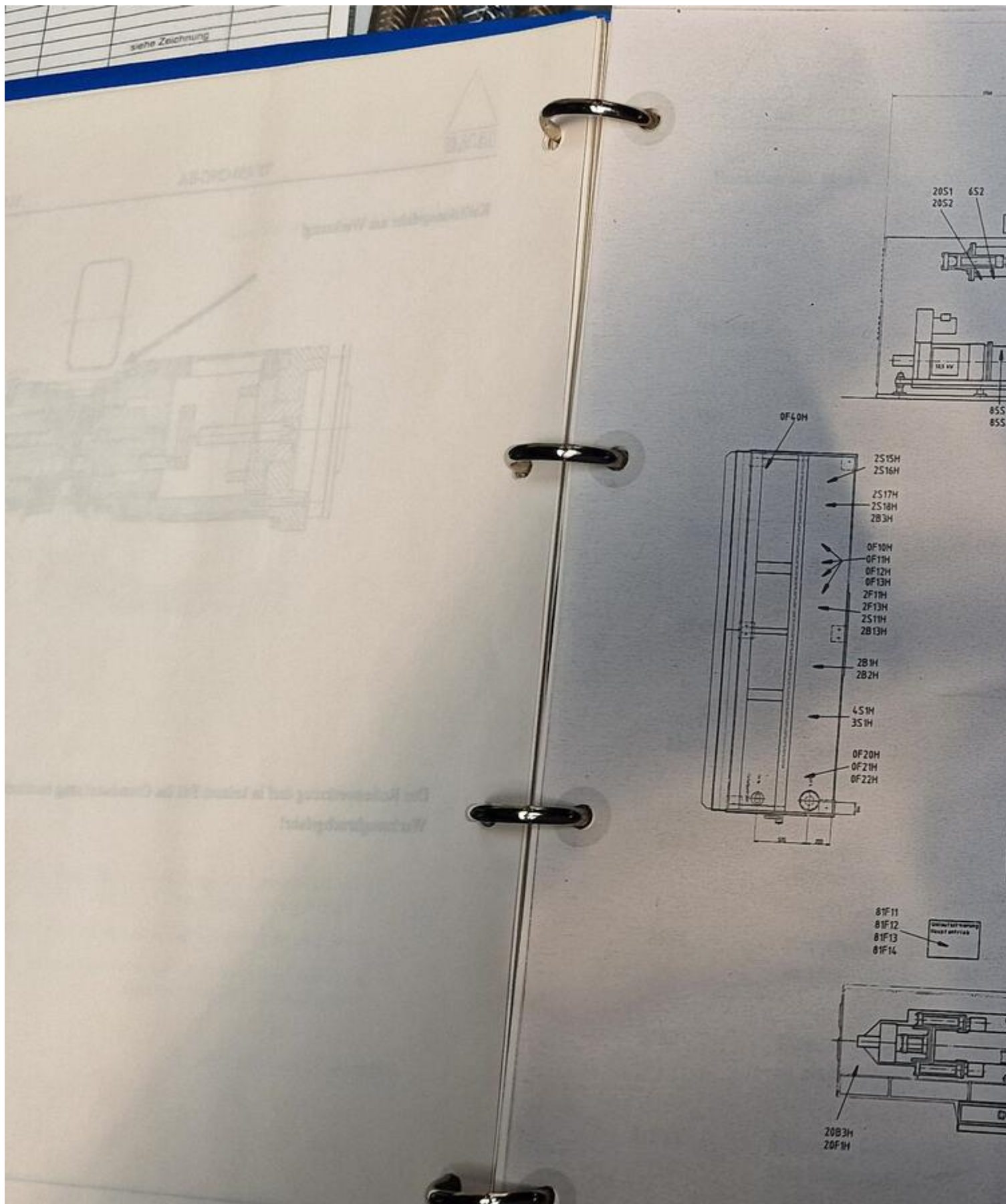
[18 %](#)

Location:

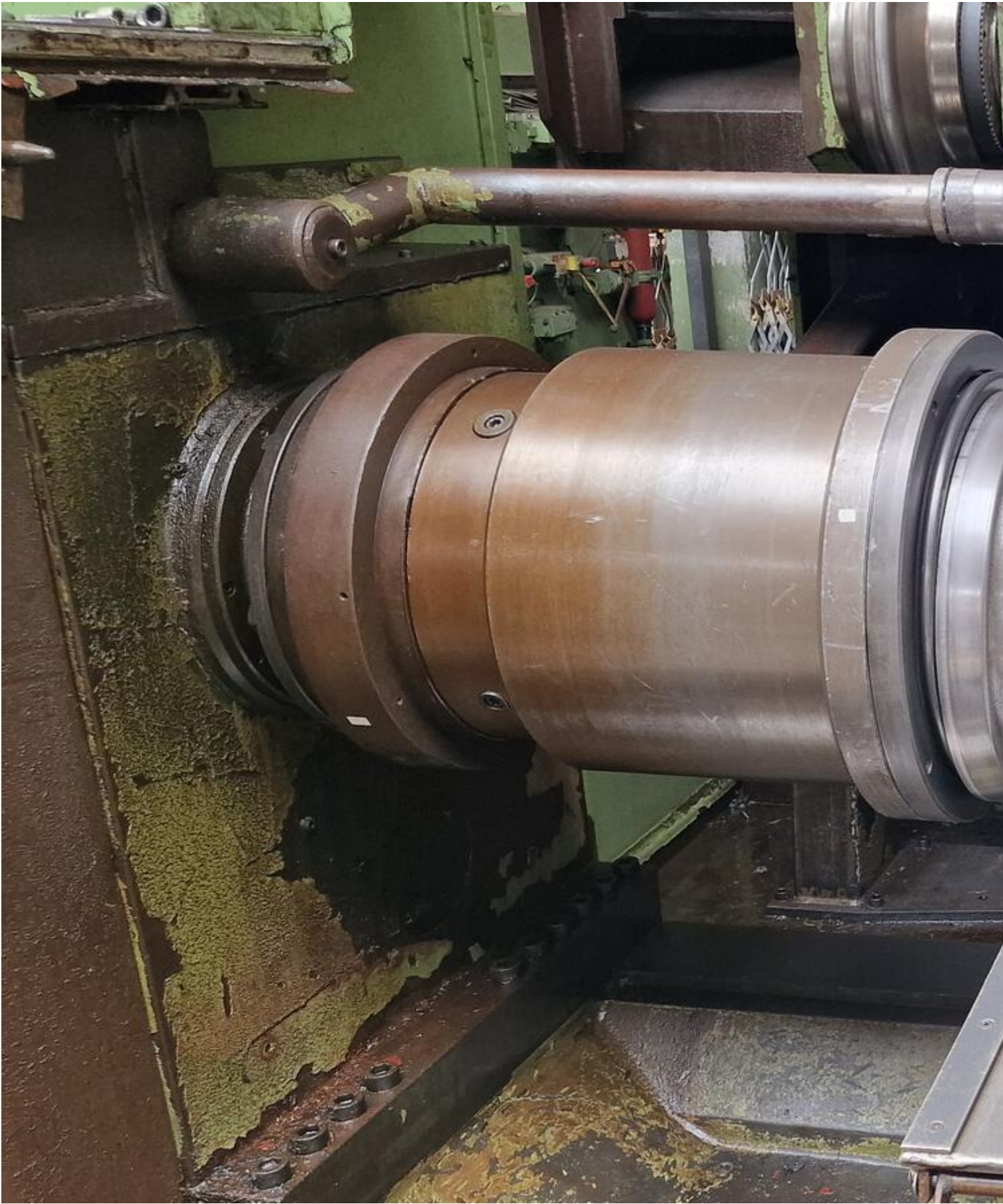
Germany

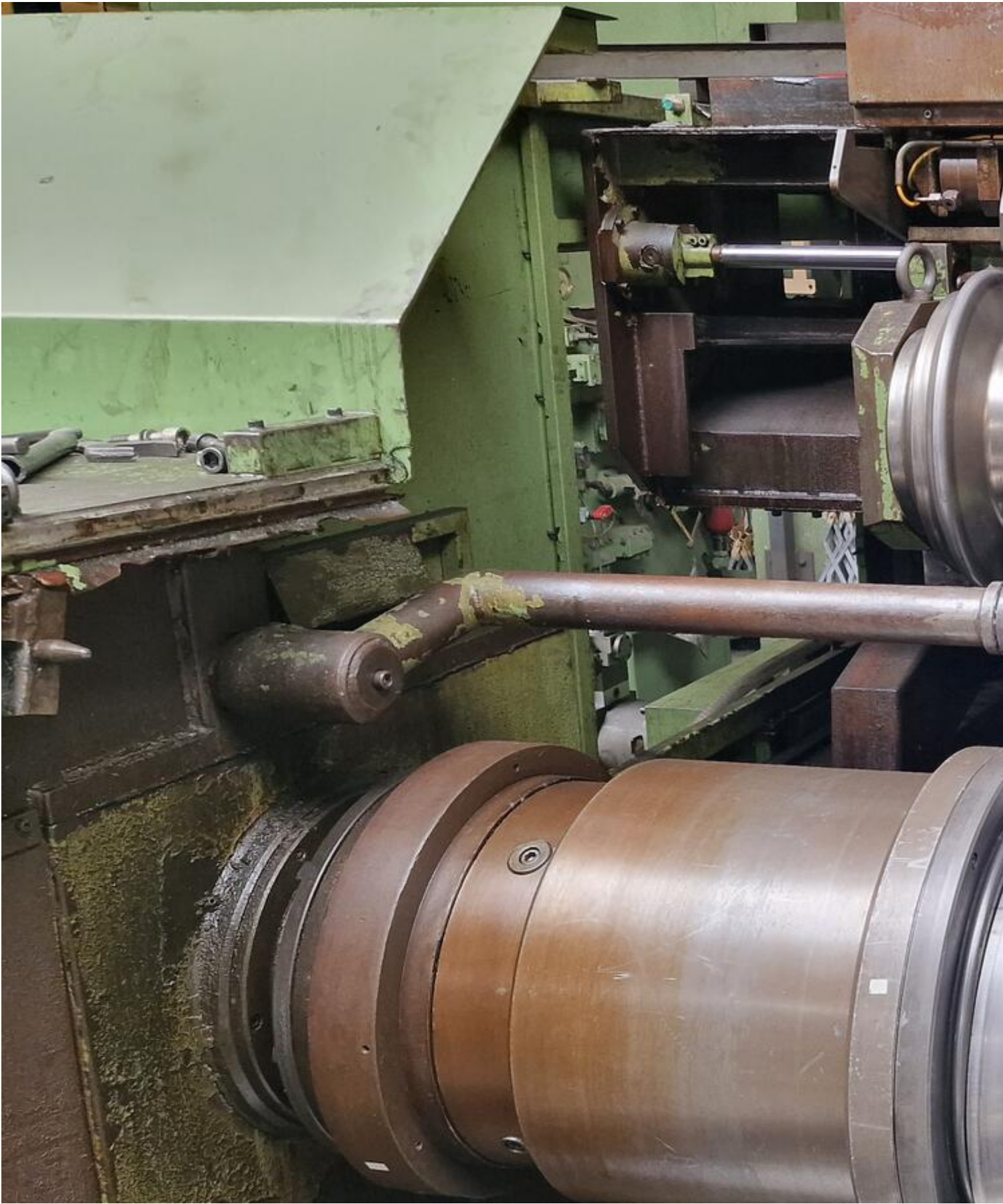
Images:











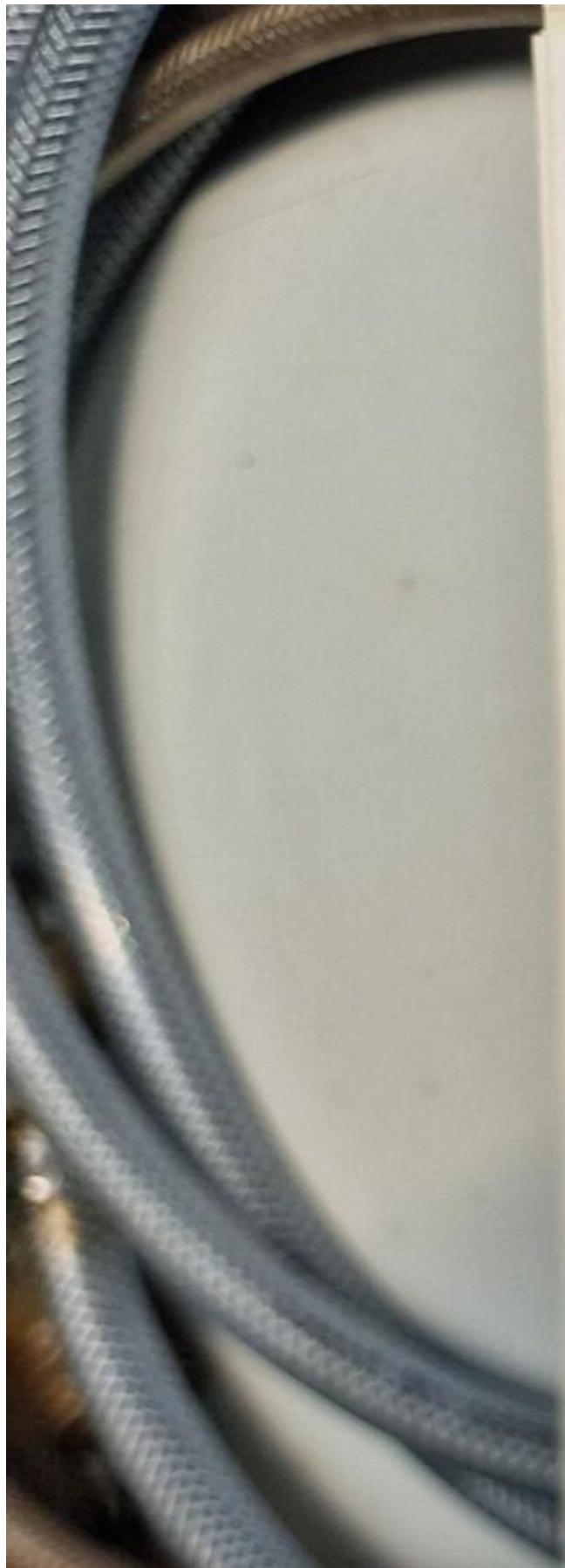








		17	18	19	20	21	22	23	24	25	26	27	28	29	30	31
AWF® Werkzeugmaschinenkarte für		TF 650 CNC - EA														
Kurzzeichen nach AWF 310		Inventar-Nr. FISCHBACHER														
Benennung		Masch.-Gruppe														
Autom. Felgen-Einzieh- u. Aufweitmaschine		Bestell-Nr. Tag: 29.11.90														
Typ		Liefer-Tag 30.06.92														
TF 650 CNC - EA		Liefer-Nr.														
Hersteller Leifeld u. Co., 4730 Ahlen / Westf.		Inbetriebn.														
Lieferer Leifeld u. Co., 4730 Ahlen / Westf.		Standort														
Technische Daten		Anschaffungskosten														
Einsatzbereich:		Zubehör/Sondereinrichtungen														
Werkstückinnendurchmesser min. 300 mm		Besonders geeignet für														
Werkstückinnendurchmesser max. 571,5 mm		4 hydraulische Rollen- antriebe														
Maulweite der Felgenreinge min. 75 mm		1 Transporteinrichtung einer Aufspannung														
Maulweite der Felgenreinge max. 410 mm		4fach Werkzeugmagazin														
max. umzuformende Materialdicke bezogen auf		Kombinierte PNC/CNC- Steuerung														
STW22:		Lichtbild und Grundflächenmaße														
- bei Tiefbetteinrichtung 6,5 mm																
- bei Schrägschulterfelgenreinigung 7,0 mm																
- bei Drückarbeiten aus der Ronde 12,0 mm																
max. Umlauf-Durchmesser 1 200 mm																
Spitzenhöhe der Maschine 700 mm																
Maschinenbettlänge 4 820 mm																
Spitzenweite 1 900 mm																
Ausstoßerhub reitstockseitig /																
Ausstoßerhub spindelkastenseitig 70/400 mm																
Ausstoßerhub 1 250 mm																



TECHNISCHER ÜBERWACHUNGS-VEREIN BAYERN e.V.

Bescheinigung

Certificato / Certificat / Certificado
über die Einstellung von Sicherheitsventilen

Auf Antrag der Firma Mannesmann Rexroth GmbH, 8770 Lohr/Main, wurden
beide auf dem Prüfstand der obengenannten Firma nachstehend bezeichnete
Sicherheitsventile mit Hydrauliköl von dem Unterzeichneten eingestellt:

A solicitud de la sociedad
Mannesmann Rexroth GmbH,
D-8770 Lohr/Main,
son ajustadas este día sobre el
banco de prueba de la firma
arriba mencionada y utilizando
aceite hidráulico las válvulas de
seguridad por el infrascrito:

Su richiesta della ditta
Mannesmann Rexroth GmbH,
D-8770 Lohr/Main,
sono state tarate sul banco
prova della ditta suddetta le val-
vole di sicurezza con olio oleodi-
namico tramite i sottoscritti:

En aplicación de
Reglamento Técnico de
Seguridad de la
Industria
de la Unión Europea
se han ajustado en el banco
de prueba de la firma
arriba mencionada las
válvulas de seguridad
con aceite hidráulico de
la siguiente manera:

Mannesmann Rexroth GmbH

Hersteller:

Mannheim - Frankfurt - Gießen - Kassel - Regensburg - Würzburg



Asset-Trade

Assessment and Sale of Used Assets world wide

Am Sonnenhof 16

47800 Krefeld

Germany

Tel.: +49 2151 32500 33

Fax.: +49 2151 65 29 22

Email: info@asset-trade.de

Web.: <https://mail.asset-trade.de/en>

Generated on 18.12.2025

© Copyright 2025 - [Asset-Trade](#)

Page