

Image not found or type unknown



Ref. No.:
1518-04301323

Overview and Technical Data:

Used EISENMANN Powder- & Painting line with modernised Controls

EISENMANN

EISE

Year of Build:
Apr 1998

Description:

Used EISENMANN Powder- & Painting line with modernised Siemes Controls

Discover the Ultimate Industrial Painting Solution: Ideal for Automotive, Manufacturing, and Heavy Industry Applications

Are you seeking a robust, pre-owned industrial paintline that combines cutting-edge technology with unmatched reliability? Look no further than the EISENMANN Powder- & Painting line, engineered for high-volume production environments. This versatile system delivers precision coating, energy-efficient drying, and seamless material handling—all at an attractive price point for international buyers.

Year of construction 1998
Modernised Siemens CNC Controls
Plant currently runs 5 days a week till end of year

Technical Data for EISENMANN :

- Maximum payload per goods carrier: 1500 kg
- Length: 3200 mm
- Width: 1750 mm
- Height: 1500 mm
- Weight throughput: 6000 kg/h
- Only 2 shift operation
- Full Rack of spare parts

More technical data per section see PDF

Inspection possible by appointment

• Key Features & Technical Highlights:

- **Supply Air System:**
 - Airflow: 75,000/50,000 m³/h
 - Temperature Control: -15°C to +22°C
 - Heating Power: 948 kW (air heater)
 - Pre-filter Quality: EU4 (ensures clean air quality)
- **Exhaust Zone**
 - Efficient Exhaust: 5,000 m³/h (fresh/exhaust air)
 - Solvent Capacity: Up to 2,690 g/h
 - Energy-Efficient Design: 2.55 kW electrical connection
- **Paint Dryer**
 - Direct Gas Heating: 270 kW (natural gas)
 - Max Temperature: 120°C
 - Recirculating Air: 1,150–1,440 m³/h
 - Adaptable to High-Volume Coating Needs
- **Power & Free Conveyor System**
 - Max Load: 1,500 kg
 - Chain Loops: 2 (for flexible workflow)
 - Speed Drives: 3 (constant-speed operation)
 - Ideal for Automotive Body Shops & Large-Scale Production
- **Lift/Lower Station**
 - Lift Height: 3,000 mm
 - Rail Length: Up to 4,005 mm
 - Transfer Speed: 2–12 m/min

Why Choose the EISENMANN 1998 Paintline?

Cost-Effective Investment : Pre-owned equipment without compromising on performance.

Global Compatibility : Designed to meet international standards for safety and efficiency.

Easy Maintenance : Proven durability and straightforward servicing protocols.

Scalable Production : Ideal for mid-to-large-scale operations in automotive, aerospace, and heavy machinery sectors.

Technical Specifications at a Glance:

- **Supply Air System** - 75,000/50,000 m³/h airflow, 948 kW heater

- **Exhaust Zone** - 5,000 m³/h exhaust, 2.55 kW electrical
- **Paint Dryer** - 270 kW heating, 120°C max temp
- **Conveyor System** - 1,500 kg load, 3 constant-speed drives
- **Lift Station** - 3,000 mm lift height, 4,005 mm rail length

Ready to Elevate Your Production Line?

The EISENMANN 1998 Paintline is your gateway to streamlined coating processes, reduced downtime, and superior finish quality. Whether you're upgrading an existing facility or establishing a new production hub, this system offers unmatched value.

Technical Data:

Technical Data:

Control:

[SIEMENS](#)

Buyer Information:

Condition:

[Very good condition](#)

Available:

[Q1](#)

Sold as:

[EXW \(Ex Works - Incoterm\)](#)

VAT:

[19 %](#)

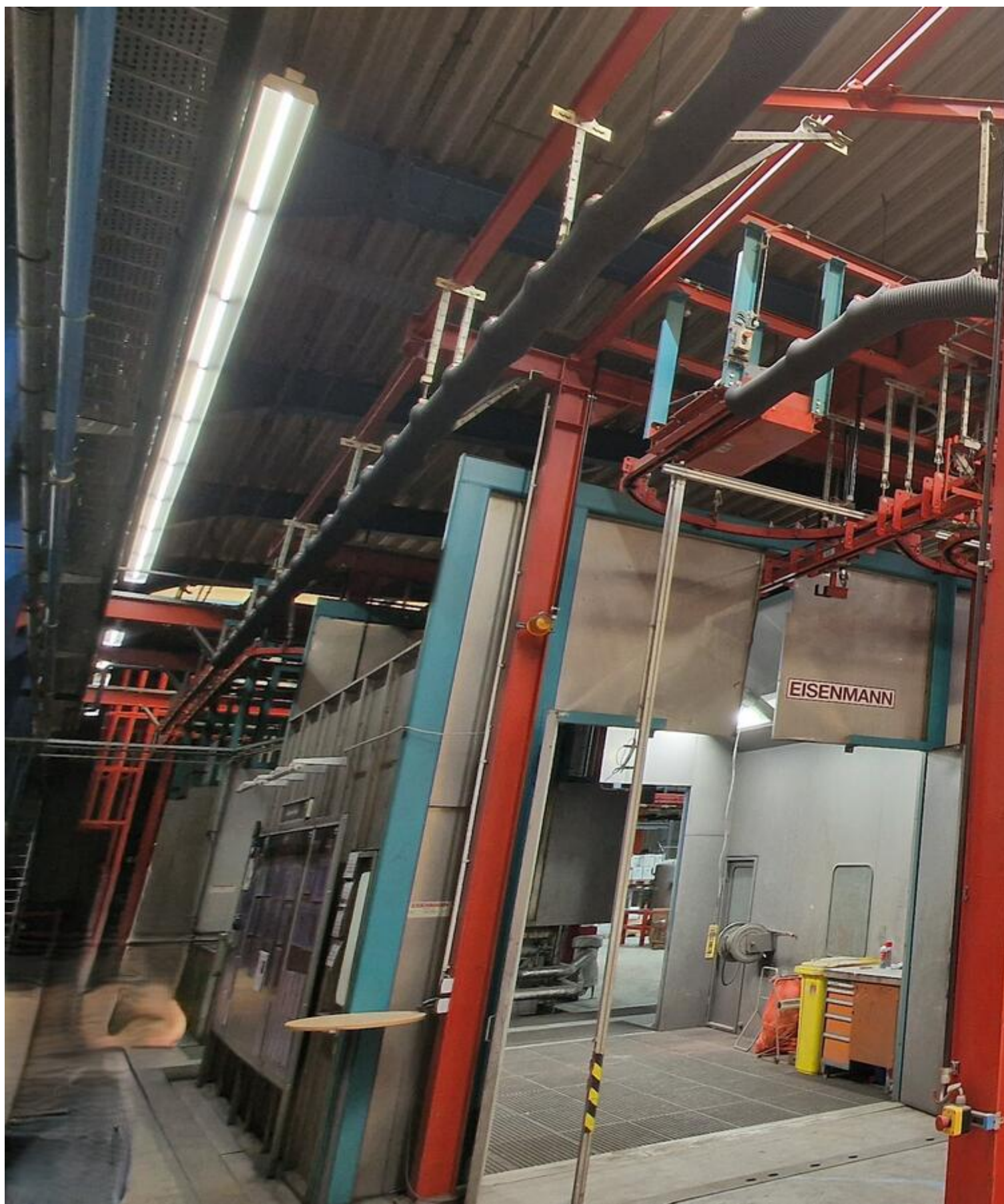
Buyers Premium:

[18 %](#)

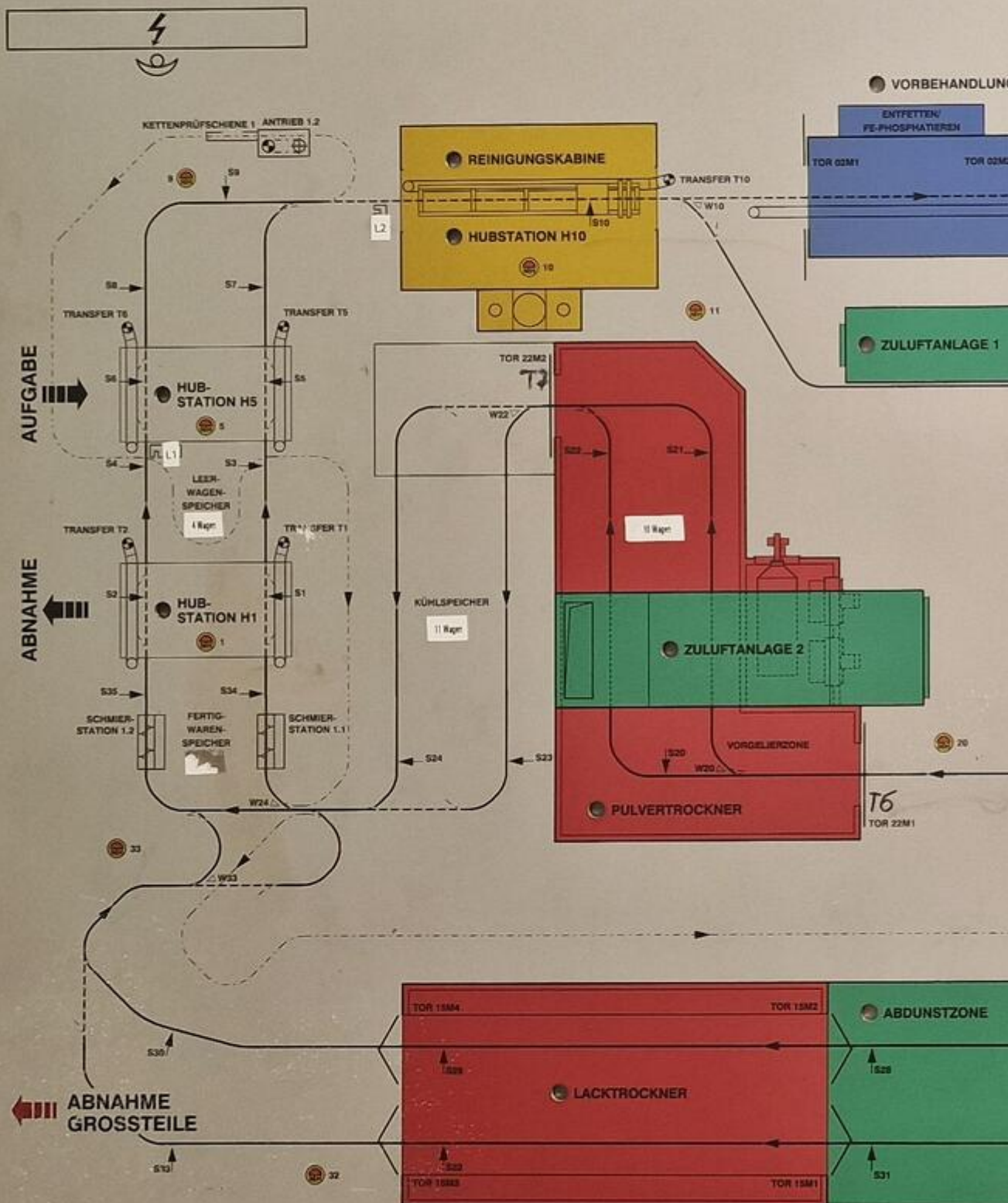
Location:

Germany

Images:



VORBEHANDLUNGS-, NASSLACKIER- U. PULVERBESCHICHTUNGSANLAGE



2



3





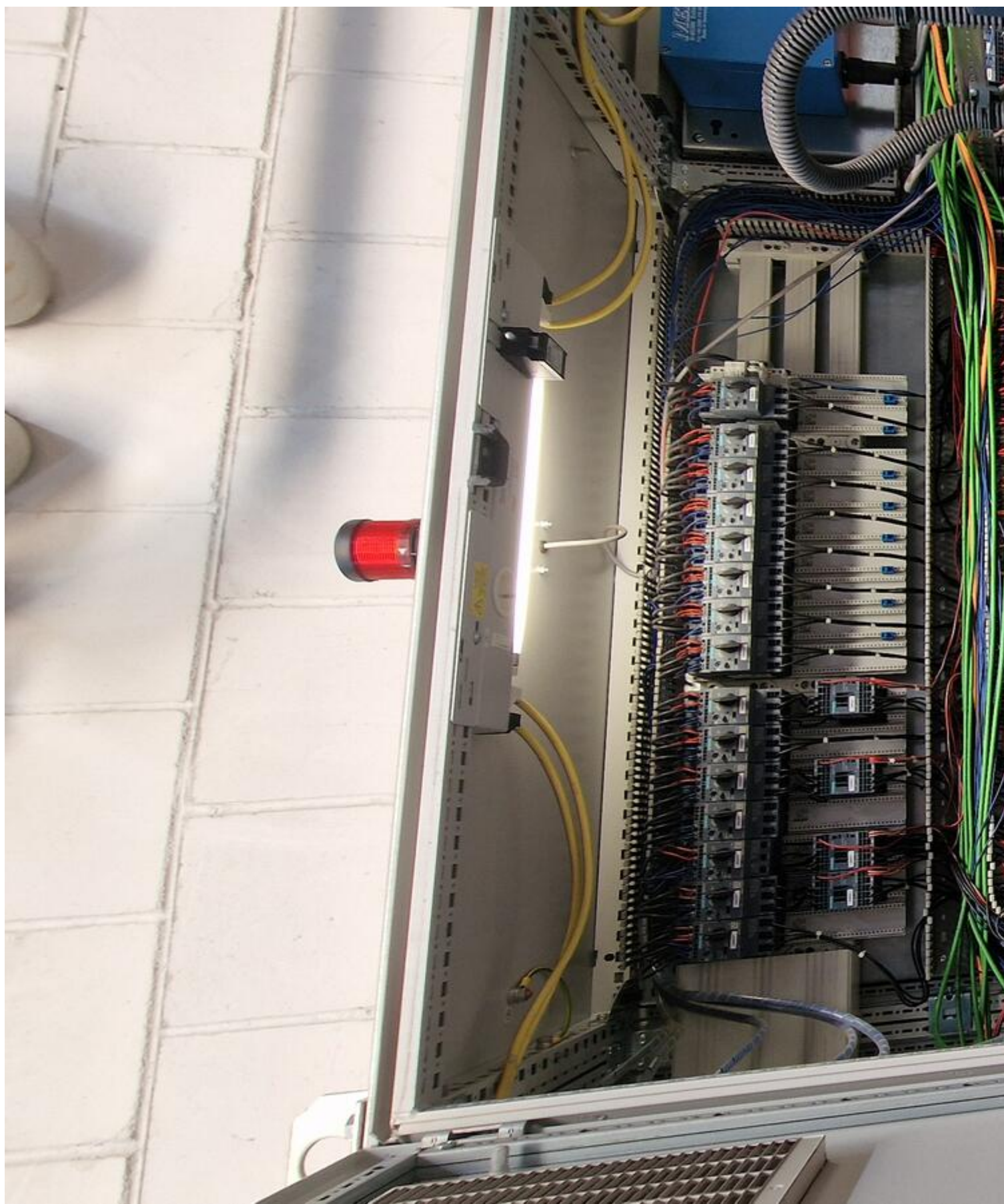


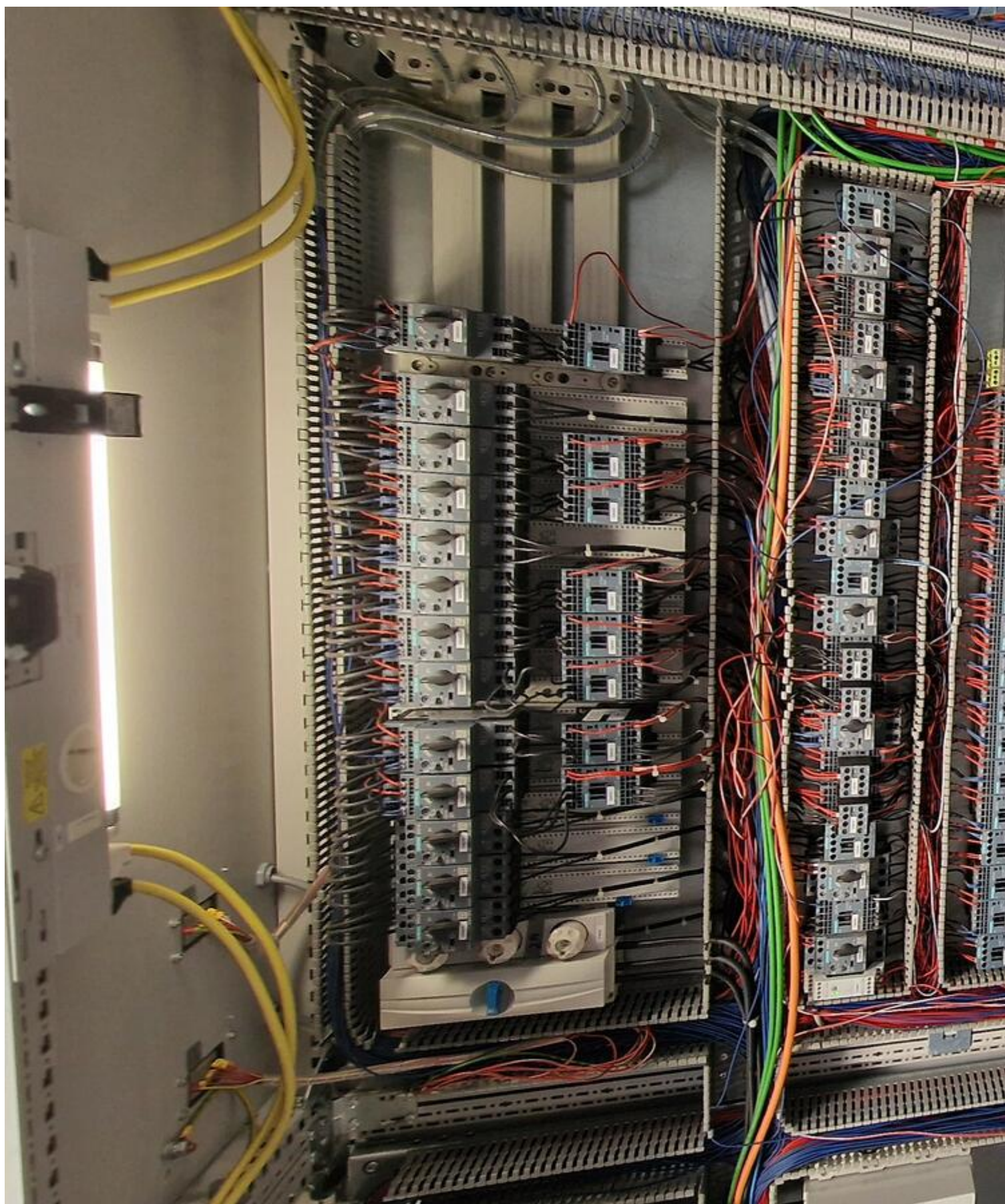


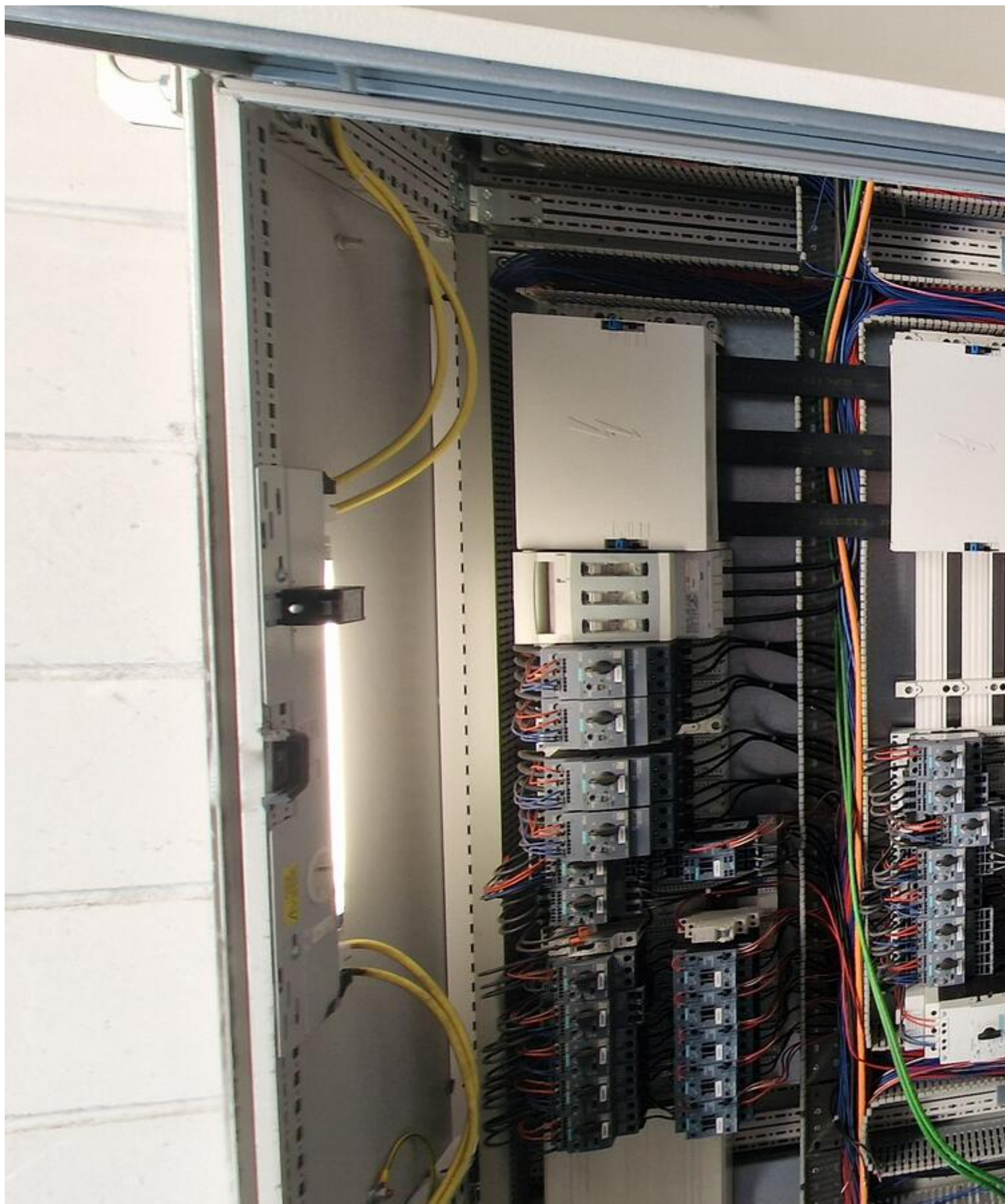


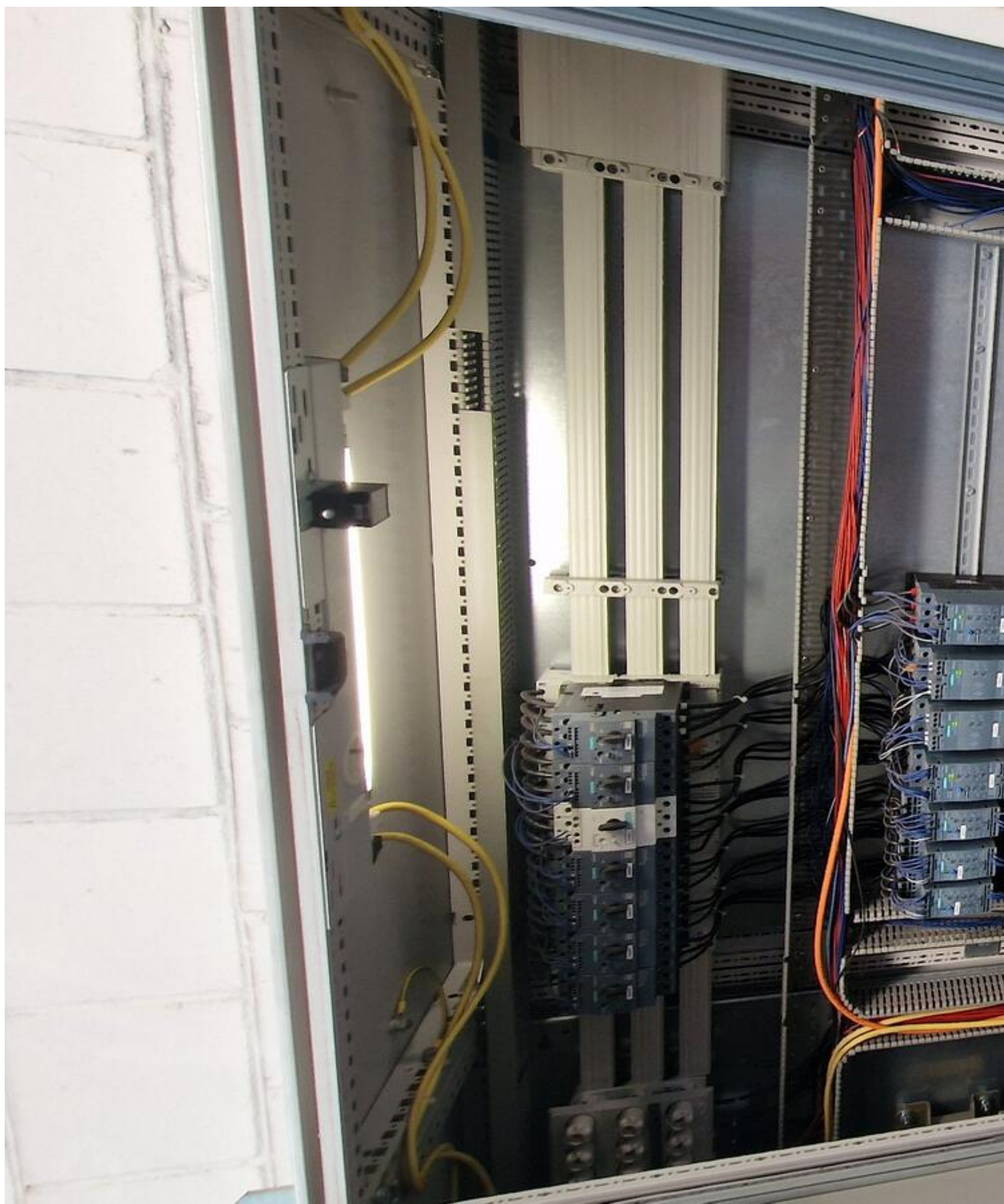






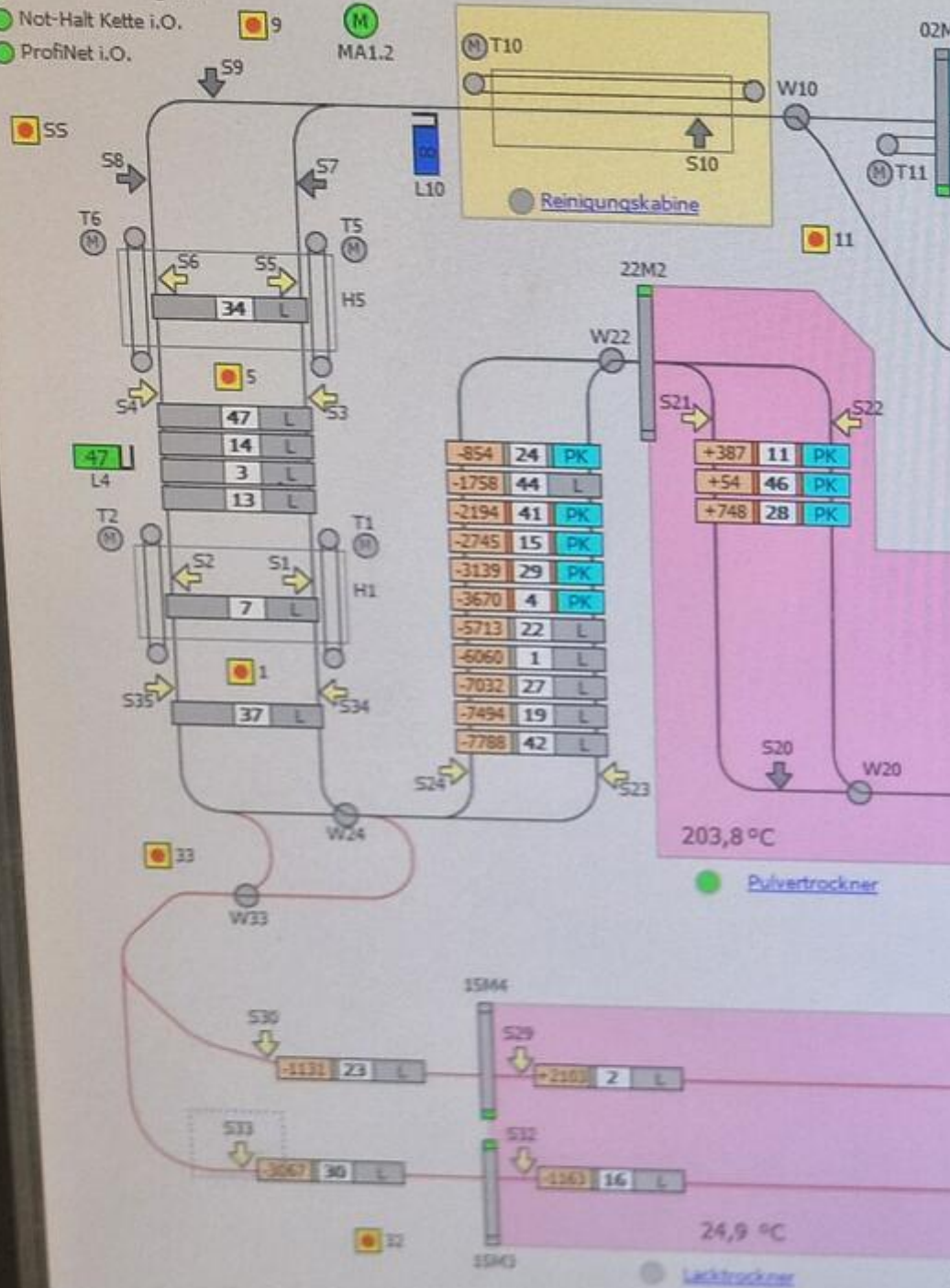






ETSEINMANN RW-Automation

- Steuerspannung ein
- Not-Halt Kette i.O.
- ProfiNet i.O.



Korrekturen

Tableau

Störungen



EISENN

POWER &

Auftrags-Nr. /Baujahr	:	56 - 853 - 030 /1998
Zeichnungs-Nr.	:	667 - 2006 /0
Kettentyp	:	667 - 200 - 01 - 02 /1
Kettenteilung	:	500 mm

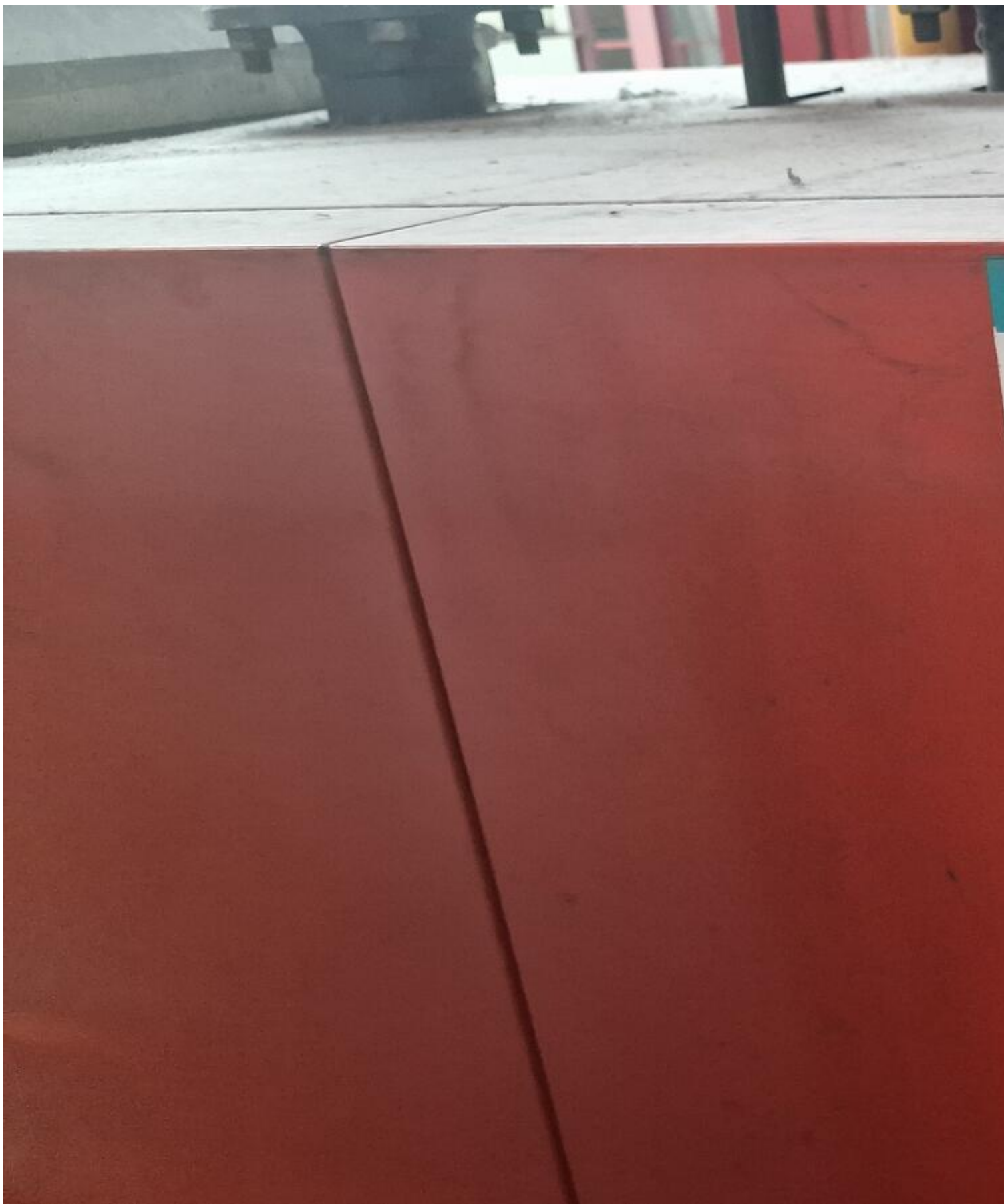








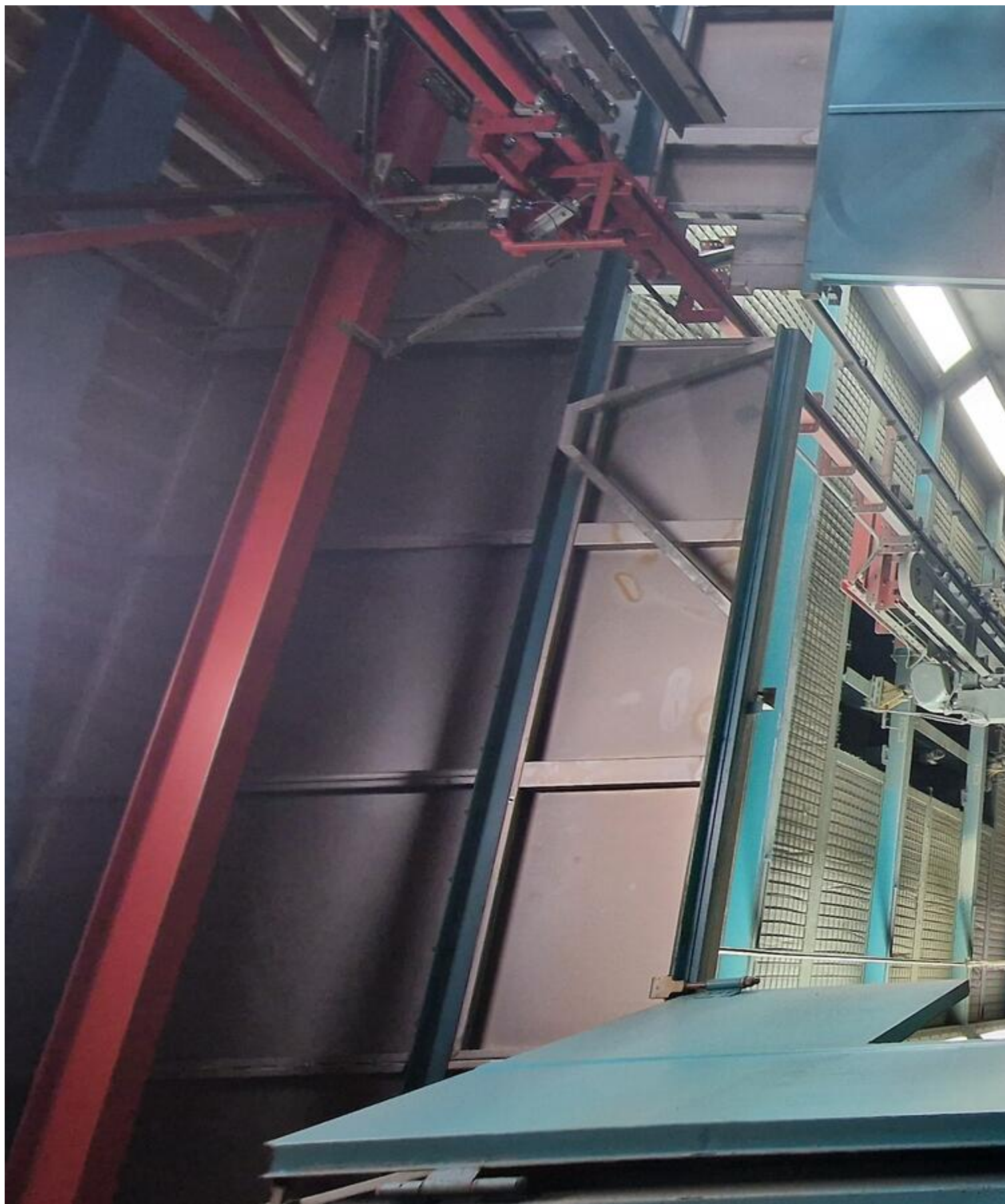








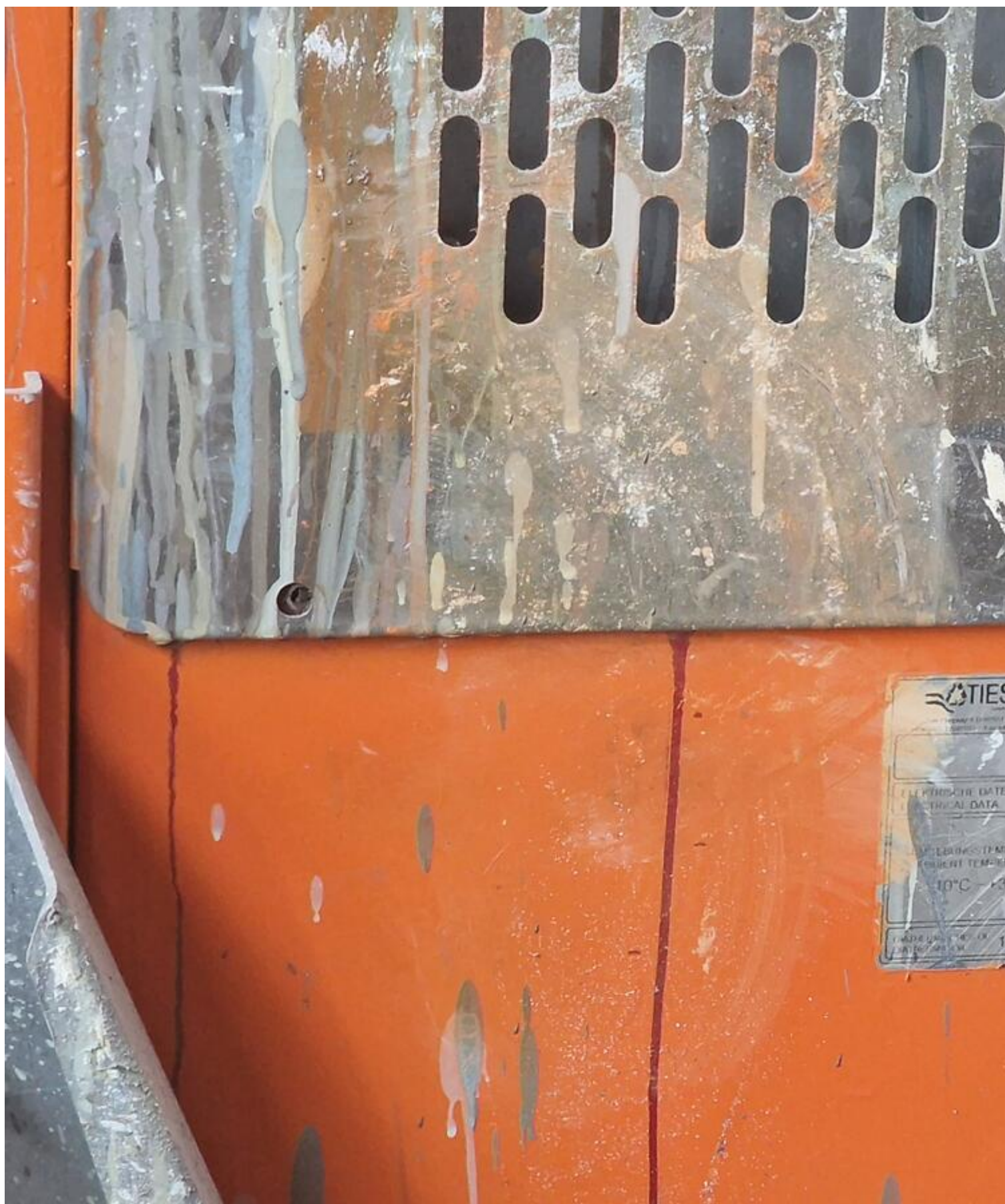




















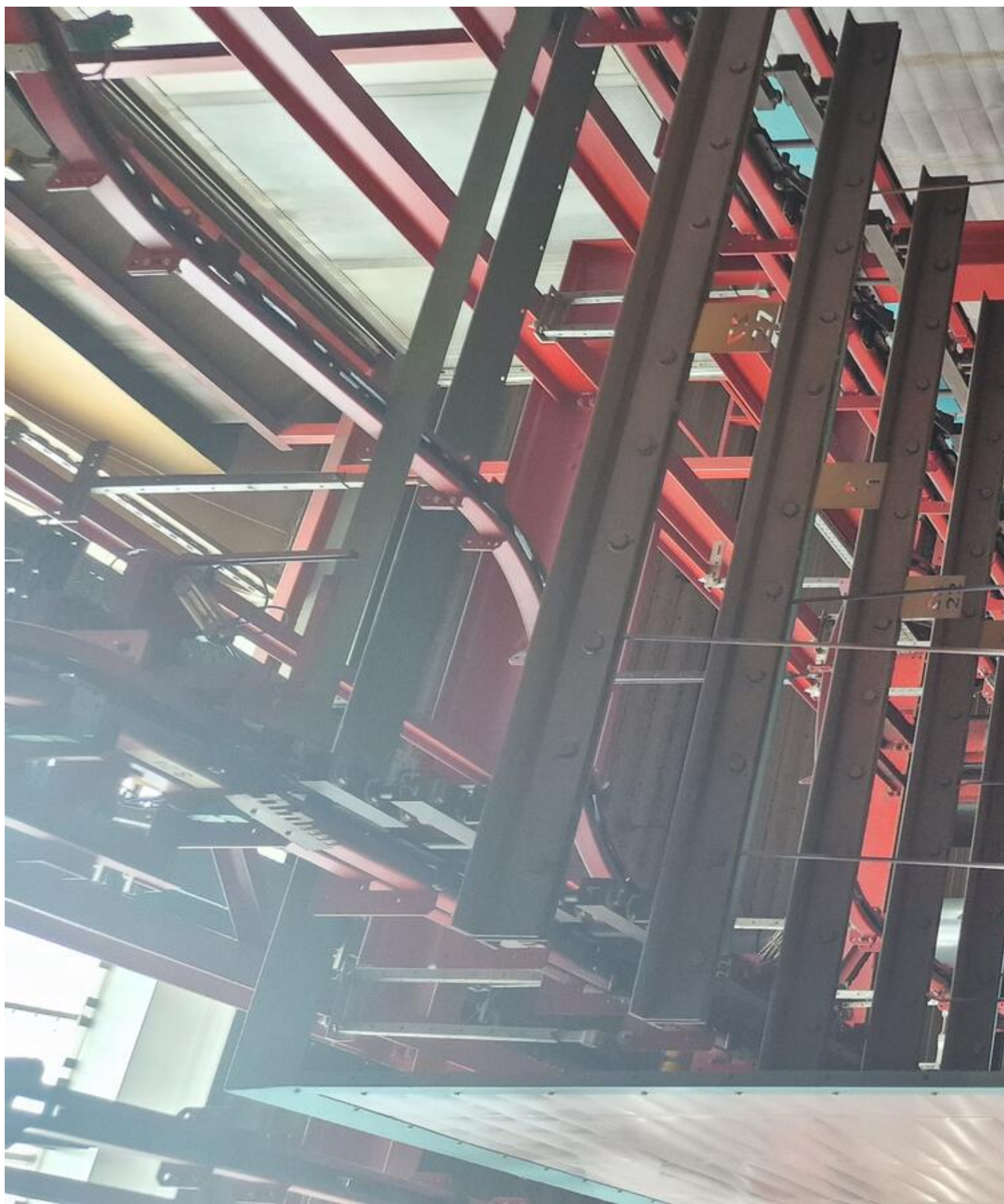
















Einer sauberen
Umwelt zuliebe:

Heizungskontrolle
durch Ihren Fachbetrie

Datum der An

11.03.24

Anlage nach

Kundendienst-Te

Heinz Brückner
Rossacher St



Assessment and Sale of Used Assets world wide

Am Sonnenhof 16

47800 Krefeld

Germany

Tel.: +49 2151 32500 33

Fax.: +49 2151 65 29 22

Email: info@asset-trade.de

Web.: <https://mail.asset-trade.de/en>

Ref. No.:
1518-04301323

Overview and Technical Data:

Used EISENMANN Powder- & Painting line with modernised Controls

EISENMANN

EISE

Year of Build:
Apr 1998

Description:

Used EISENMANN Powder- & Painting line with modernised Siemes Controls

Discover the Ultimate Industrial Painting Solution: Ideal for Automotive, Manufacturing, and Heavy Industry Applications

Are you seeking a robust, pre-owned industrial paintline that combines cutting-edge technology with unmatched reliability? Look no further than the EISENMANN Powder- & Painting line, engineered for high-volume production environments. This versatile system delivers precision coating, energy-efficient drying, and seamless material handling—all at an attractive price point for international buyers.

Year of construction 1998

Modernised Siemens CNC Controls

Plant currently runs 5 days a week till end of year

Technical Data for EISENMANN :

- Maximum payload per goods carrier: 1500 kg
- Length: 3200 mm
- Width: 1750 mm
- Height: 1500 mm
- Weight throughput: 6000 kg/h
- Only 2 shift operation
- Full Rack of spare parts

More technical data per section see PDF

Inspection possible by appointment

• Key Features & Technical Highlights:

- **Supply Air System:**
 - Airflow: 75,000/50,000 m³/h
 - Temperature Control: -15°C to +22°C
 - Heating Power: 948 kW (air heater)
 - Pre-filter Quality: EU4 (ensures clean air quality)
- **Exhaust Zone**
 - Efficient Exhaust: 5,000 m³/h (fresh/exhaust air)
 - Solvent Capacity: Up to 2,690 g/h
 - Energy-Efficient Design: 2.55 kW electrical connection
- **Paint Dryer**
 - Direct Gas Heating: 270 kW (natural gas)
 - Max Temperature: 120°C
 - Recirculating Air: 1,150–1,440 m³/h
 - Adaptable to High-Volume Coating Needs
- **Power & Free Conveyor System**
 - Max Load: 1,500 kg
 - Chain Loops: 2 (for flexible workflow)
 - Speed Drives: 3 (constant-speed operation)

- Ideal for Automotive Body Shops & Large-Scale Production
- **Lift/Lower Station**
 - Lift Height: 3,000 mm
 - Rail Length: Up to 4,005 mm
 - Transfer Speed: 2–12 m/min

Why Choose the EISENMANN 1998 Paintline?

Cost-Effective Investment : Pre-owned equipment without compromising on performance.

Global Compatibility : Designed to meet international standards for safety and efficiency.

Easy Maintenance : Proven durability and straightforward servicing protocols.

Scalable Production : Ideal for mid-to-large-scale operations in automotive, aerospace, and heavy machinery sectors.

Technical Specifications at a Glance:

- **Supply Air System** - 75,000/50,000 m³/h airflow, 948 kW heater
- **Exhaust Zone** - 5,000 m³/h exhaust, 2.55 kW electrical
- **Paint Dryer** - 270 kW heating, 120°C max temp
- **Conveyor System** - 1,500 kg load, 3 constant-speed drives
- **Lift Station** - 3,000 mm lift height, 4,005 mm rail length

Ready to Elevate Your Production Line?

The EISENMANN 1998 Paintline is your gateway to streamlined coating processes, reduced downtime, and superior finish quality. Whether you're upgrading an existing facility or establishing a new production hub, this system offers unmatched value.

Technical Data:

Technical Data:

Control:

[SIEMENS](#)

Buyer Information:

Condition:

[Very good condition](#)

Available:

[Q1](#)

Sold as:

[EXW \(Ex Works - Incoterm\)](#)

VAT:

[19 %](#)

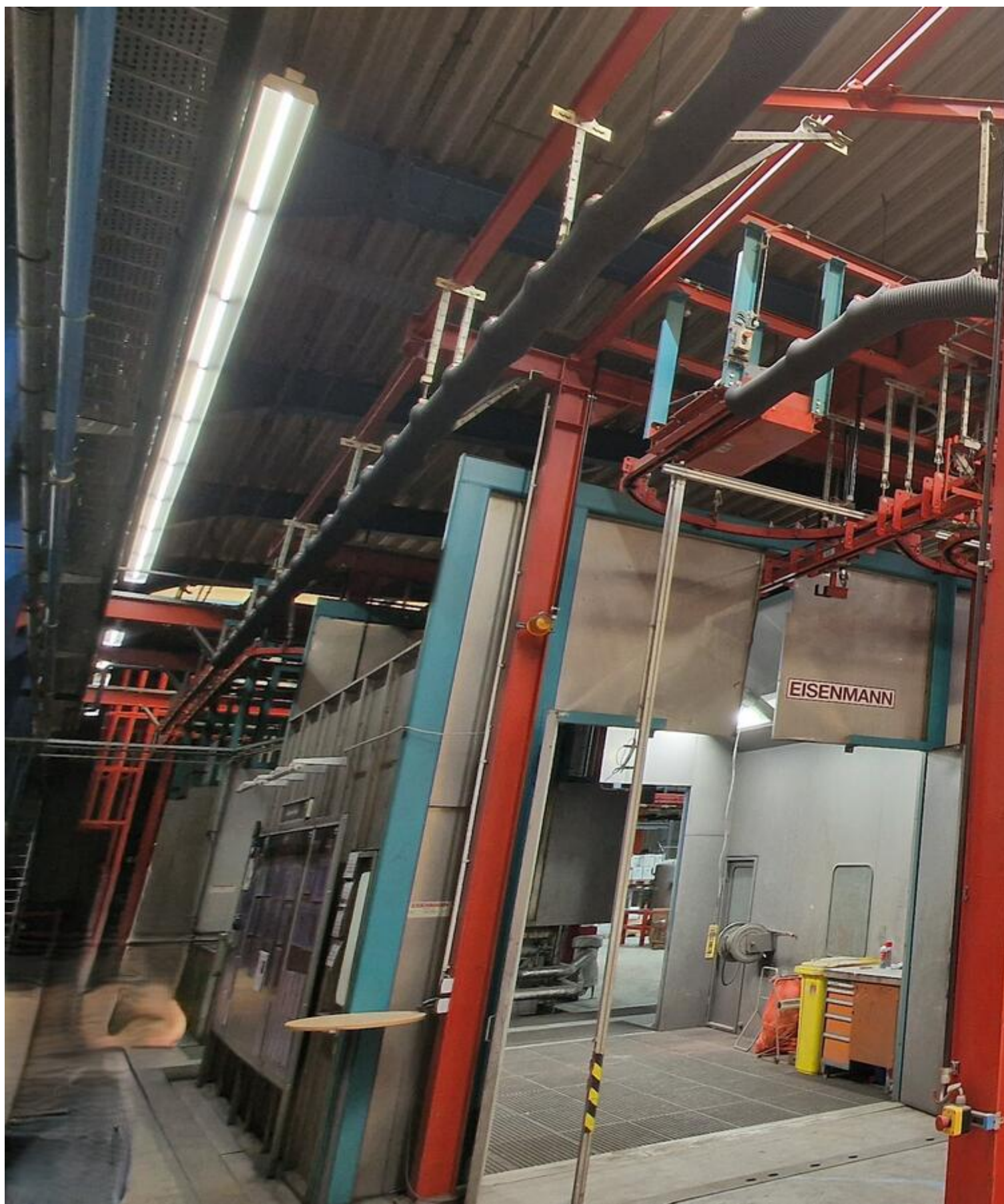
Buyers Premium:

[18 %](#)

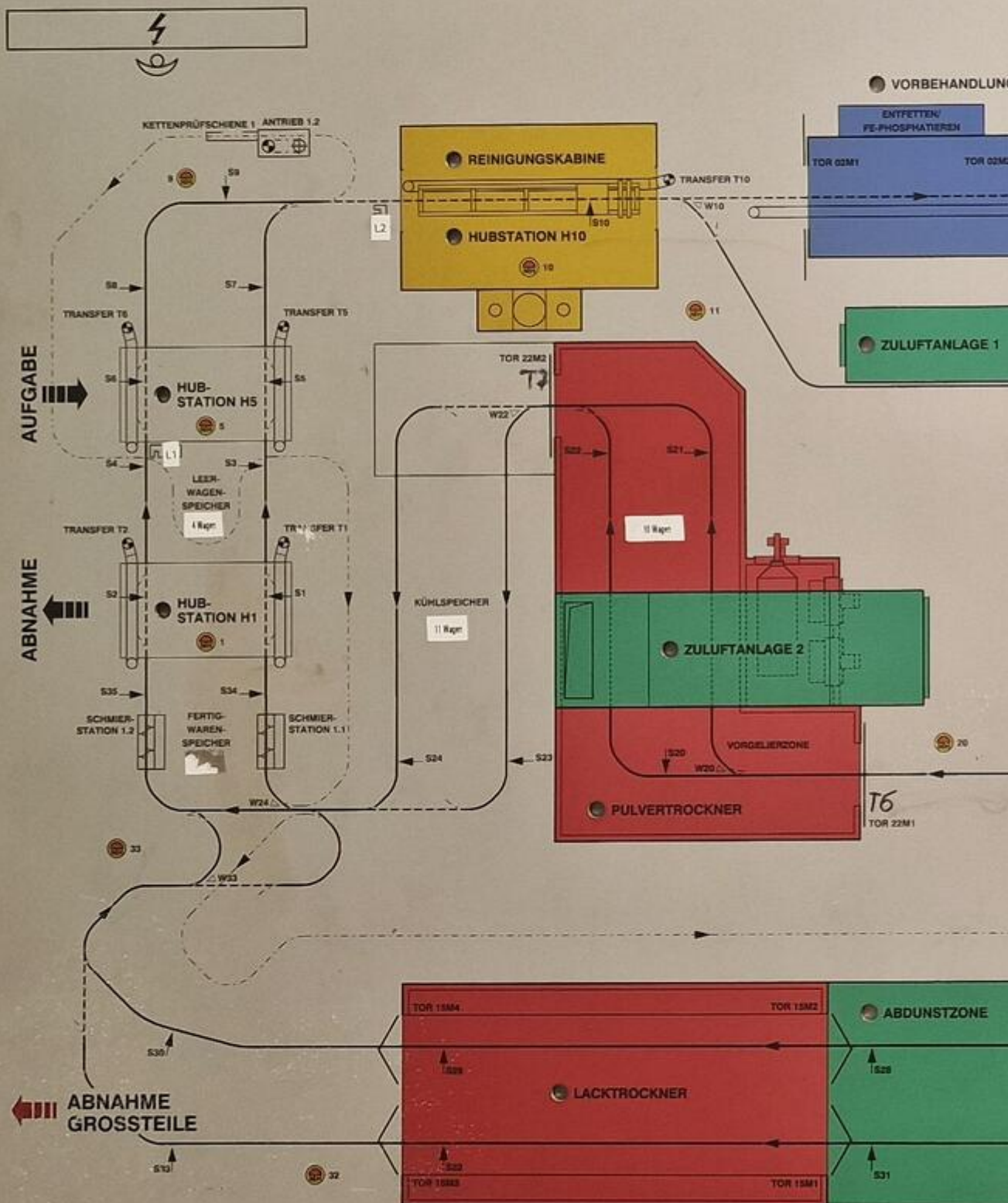
Location:

Germany

Images:



VORBEHANDLUNGS-, NASSLACKIER- U. PULVERBESCHICHTUNGSANLAGE



2



3





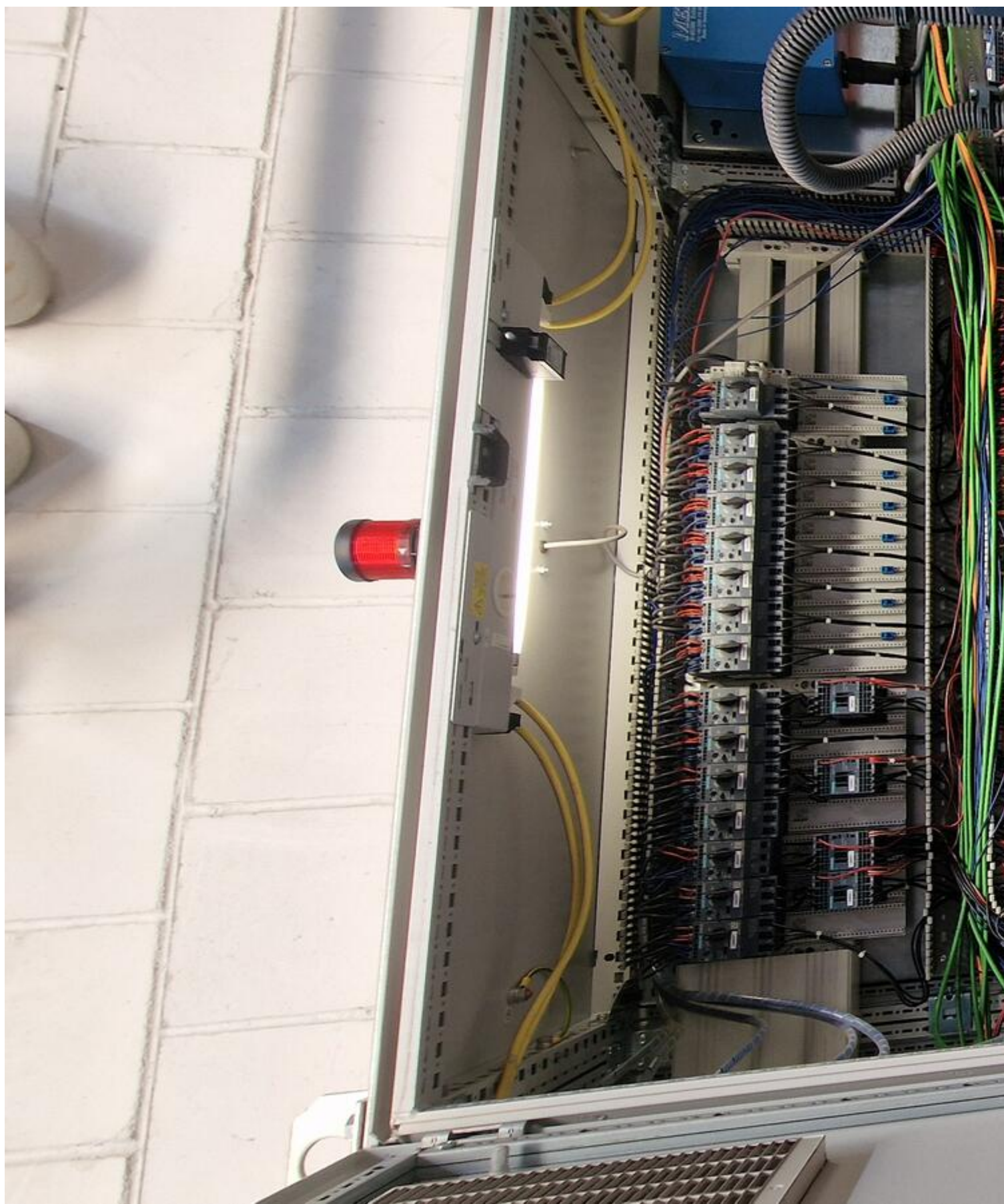


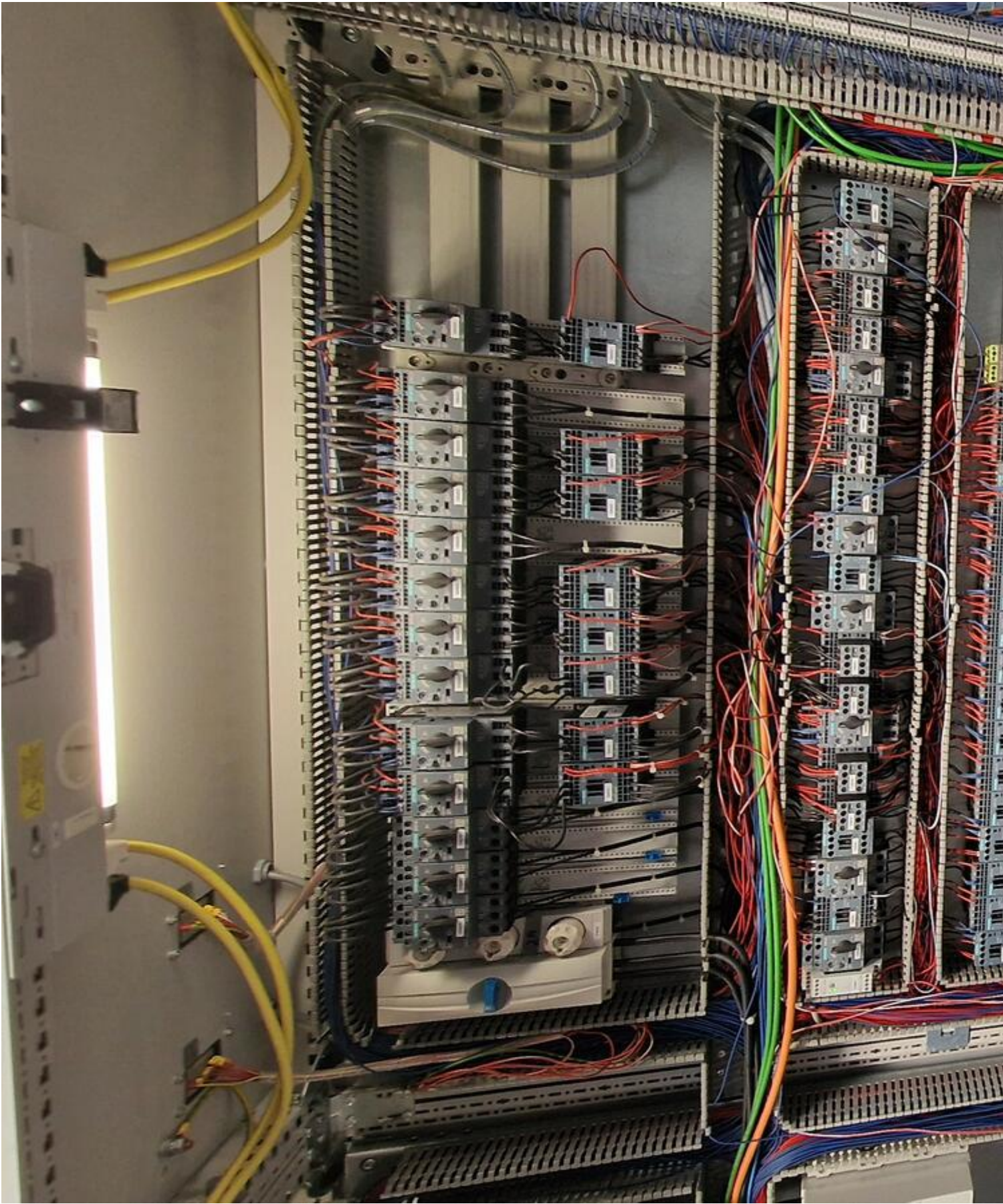


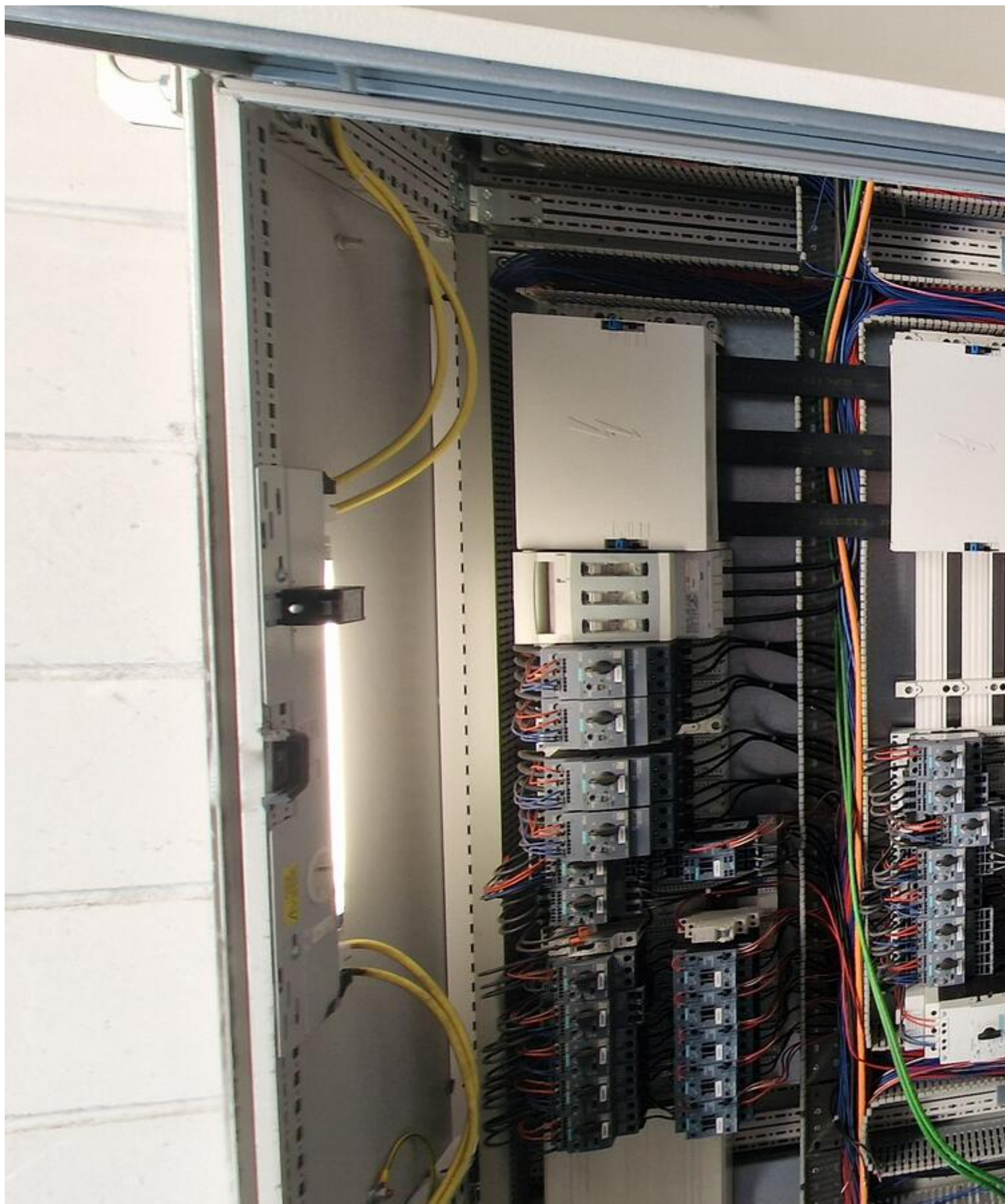


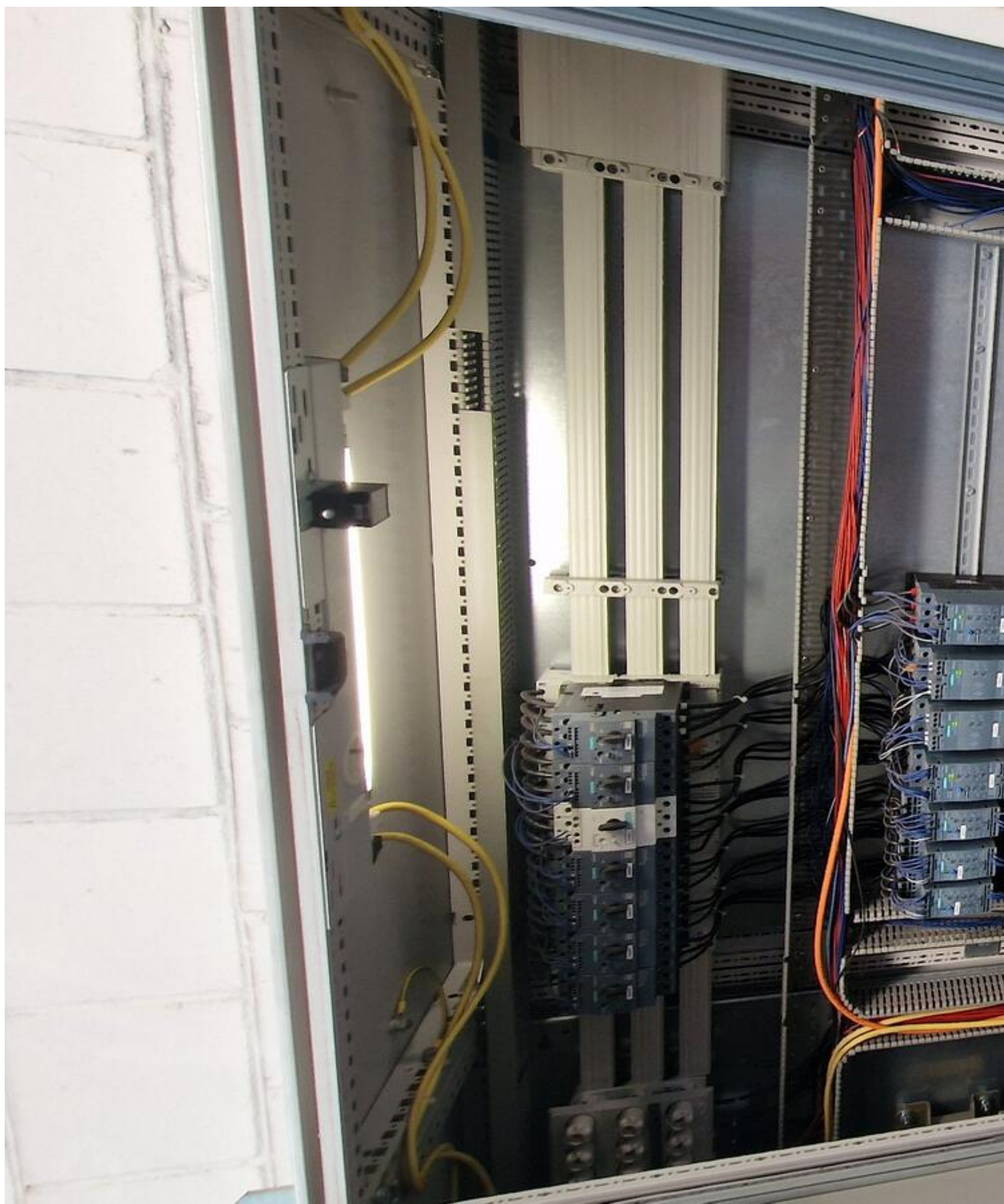














EISENN

POWER &

Auftrags-Nr. /Baujahr	:	56 - 853 - 030 /1998
Zeichnungs-Nr.	:	667 - 2006 /0
Kettentyp	:	667 - 200 - 01 - 02 /1
Kettenteilung	:	500 mm

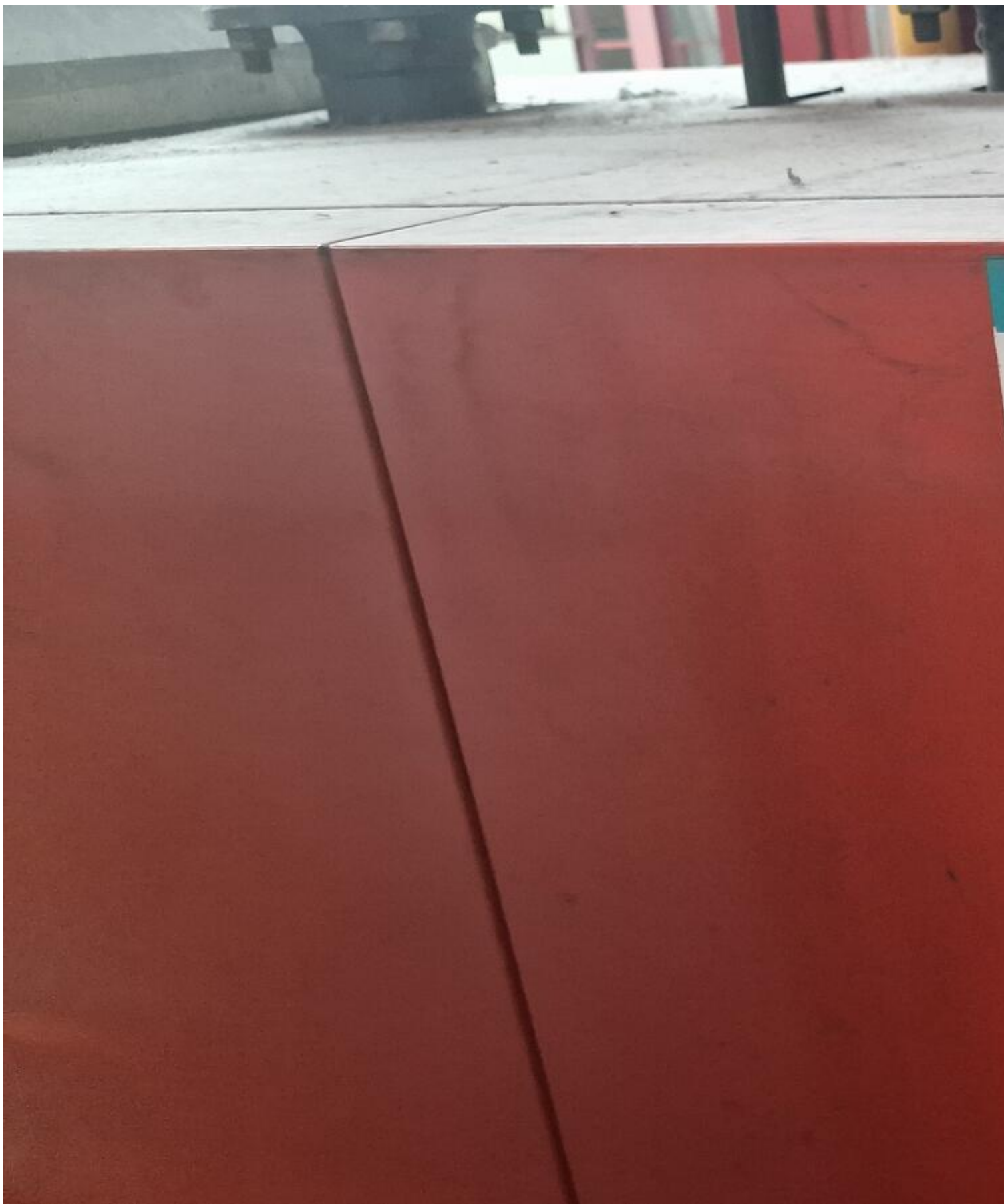








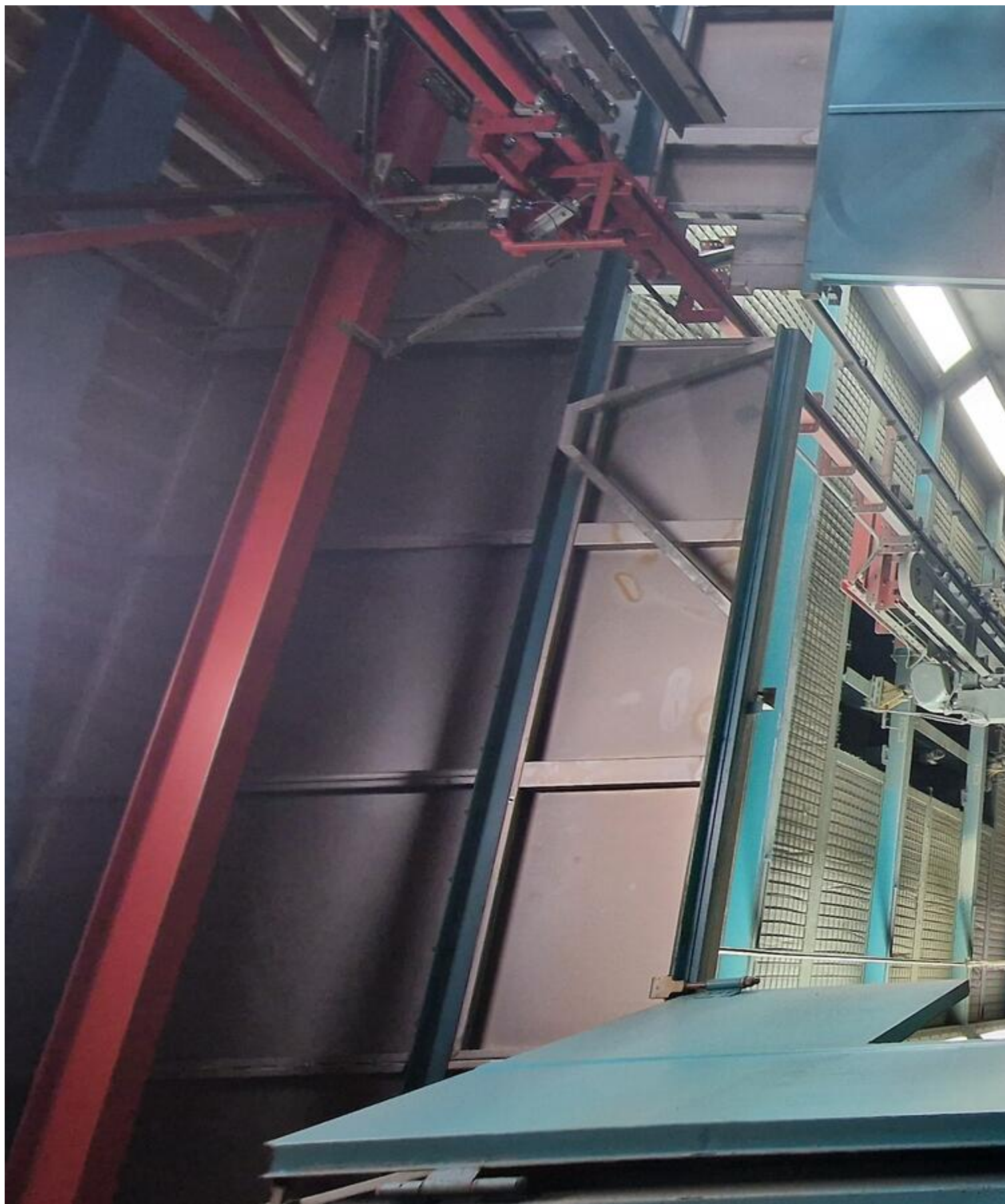








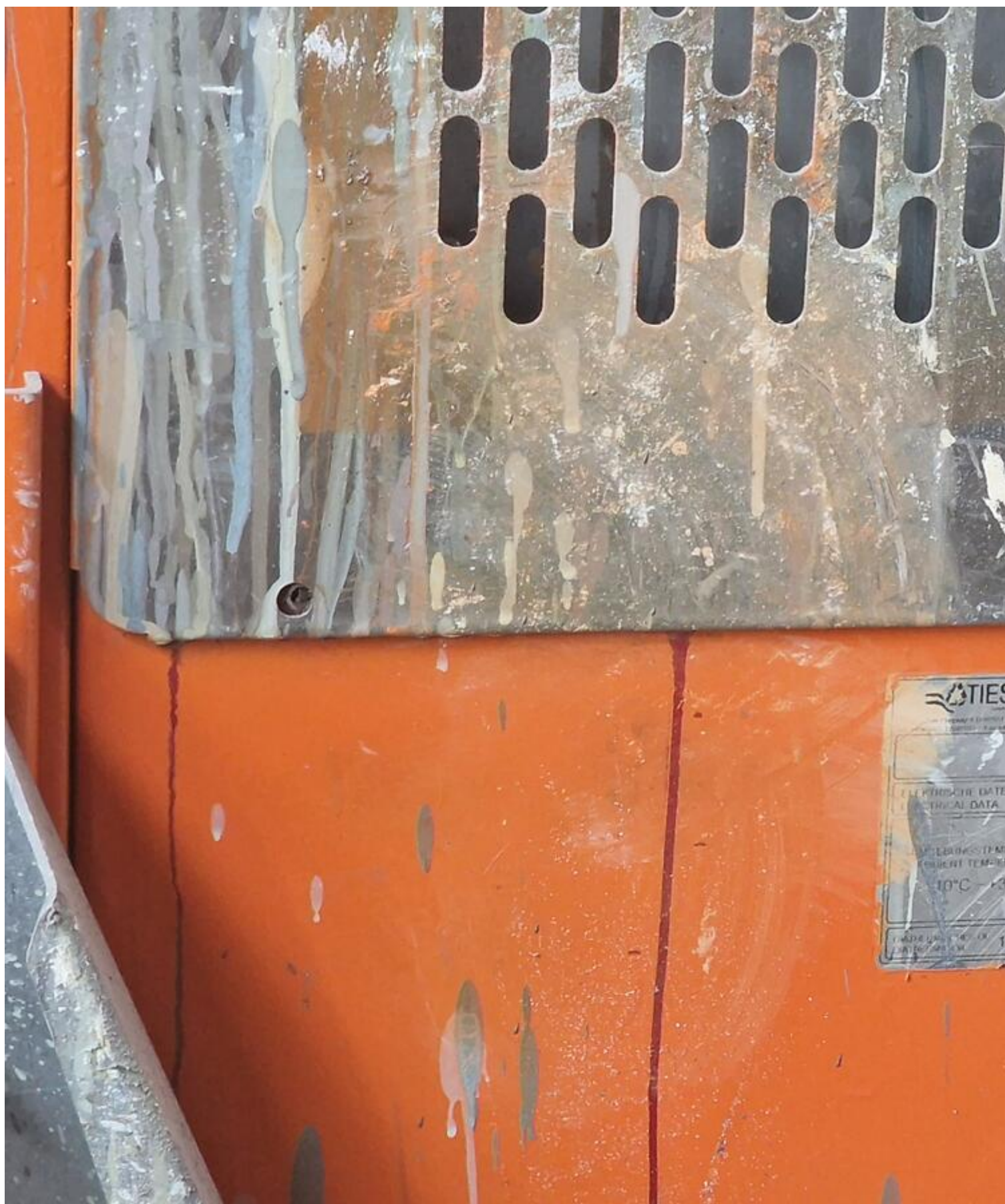




















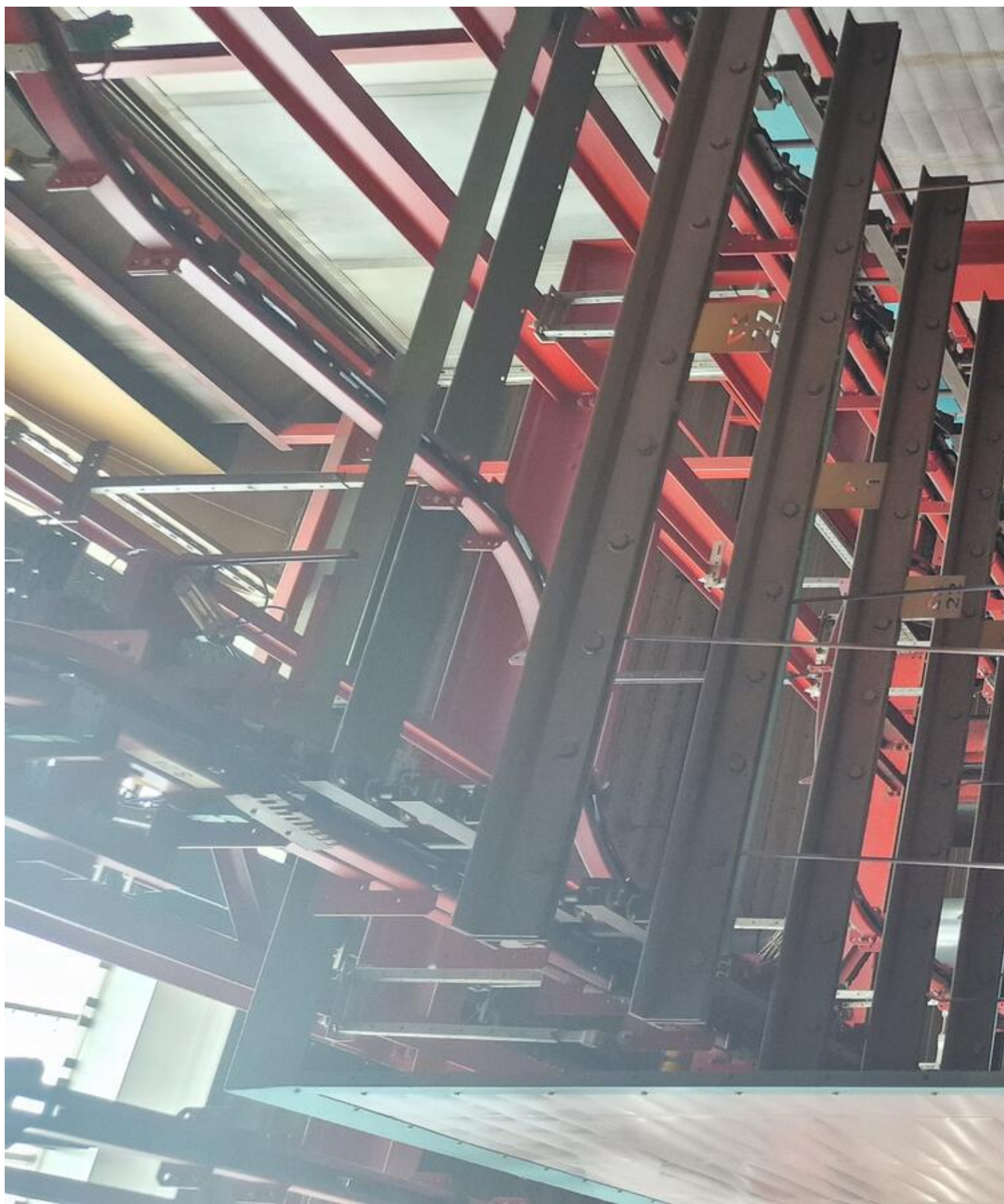
















Einer sauberen
Umwelt zuliebe:

Heizungskontrolle
durch Ihren Fachbetrie

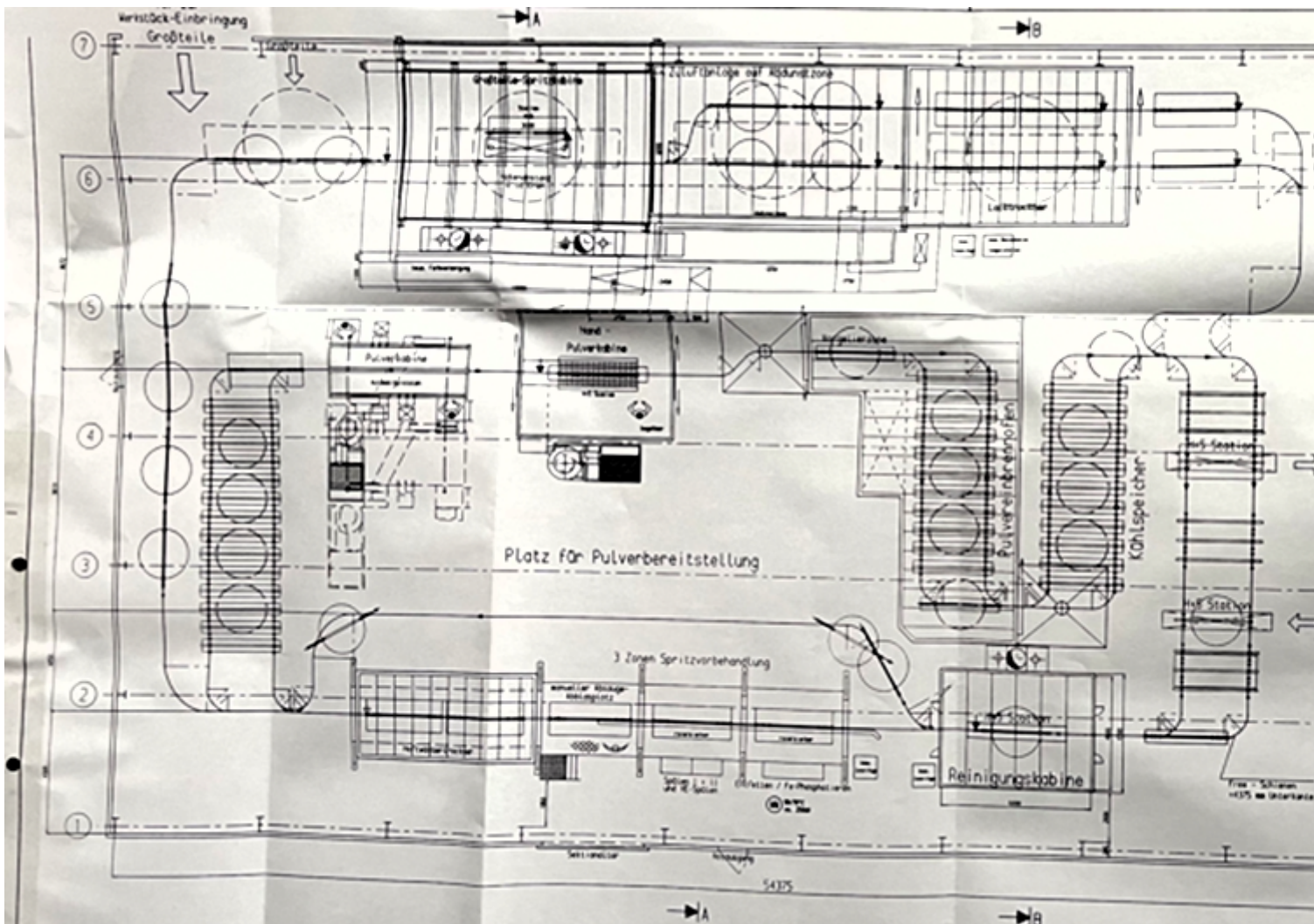
Datum der An

11.03.24

Anlage nach

Kundendienst-Te

Heinz Brückner
Rossacher St.



45



Asset-Trade

Assessment and Sale of Used Assets world wide

Am Sonnenhof 16

47800 Krefeld

Germany

Tel.: +49 2151 32500 33

Fax.: +49 2151 65 29 22

Email: info@asset-trade.de

Web.: <https://mail.asset-trade.de/en>

Generated on 18.12.2025

© Copyright 2025 - [Asset-Trade](#)

Page