



Asset-Trade

Assessment & Sale of Used Assets

Ref. No.: 1452-12211912

Overview and Technical Data:

Used DMG HSC 105 linear Vertical Machining center

DMG MORI SEIKI



Year of Build: Jan 2009



Description:

Used DMG HSC 105 linear - Your high-speed machining center

Are you looking for a reliable used high-speed machining center to optimize your production? The DMG HSC 105 used offers impressive precision, speed and reliability - ideal for demanding manufacturing tasks in industry.

- Operating hours: 49,679 hours
- CNC control: Heidenhain iTNC 530 HSCI for high-precision control.

Technical data:

- Speed: 18,000 rpm
- Workpiece weight: 1,300 Kg
- Traverse path X: 1,050 mm
- Travel Y: 800 mm
- Travel Z: 560 mm
- Weight: approx. 14,000 kg
- Clamping surface: 1,200 x 850 mm
- Spindle:
 - Power: 35 kW
 - Torque: 130 Nm
 - Speed: 18,000 rpm
 - Tool holder: HSK 63
- General:
 - Tool magazine 60-fold
 - Feed rate 90 m/min
 - Clamping area: 1,200 x 850 mm
 - Workpiece weight max. 1,300 kg

Why this machine?

- Perfect for companies that want to buy a vertical machining center that works precisely and efficiently.
- Proven quality from CNC machining centers Germany, ideal for various industrial applications.



- Attractive solution in industrial machine trade vertical centers that saves cost and time without compromising on performance.

Applications:

Suitable for automotive, engineering, aerospace and other industries that require precise and fast machining processes.

Contact us today to find out more about this DMG HSC 105 used or to arrange a viewing. Secure this top model and benefit from proven technology at a fraction of the cost of new machines.



Technical Data:

Technical Data:

Control: TNC 530
Machine Hours: 49.679 hrs.
Spindle Hours: 35.002 hrs.
Spindle Speed: 18.000 rpm
Tool Holder: HSK-A63
Tool Capacity: 120 x

Travels:

X-Axis: 1.050 mm
Y-Axis: 800mm
Z-Axis: 560 mm

Dimensions and Weight:

Height: 3.180 mm
Width: 2.935 mm
Length: 3.866 mm
Weight: 13.700 kg

Buyer Information:

Condition: Normal wear
Availability: Reserved
Sold as:
EXW (Ex Works - Incoterm)
VAT: 19 %
Buyers Premium: 18 %
Location: Germany



Images:





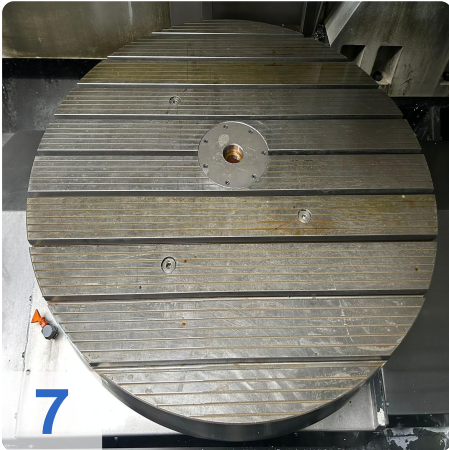
As

e

ssets



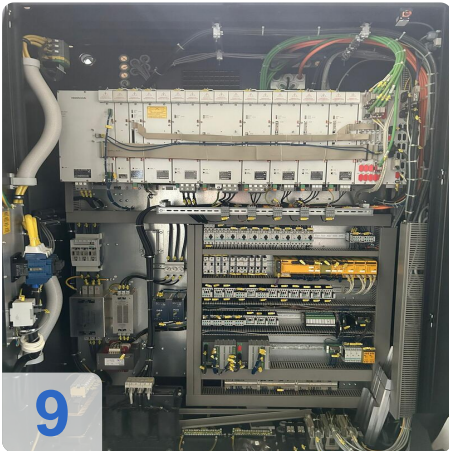
6



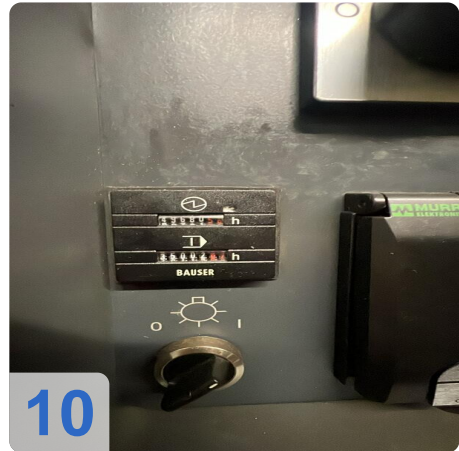
7



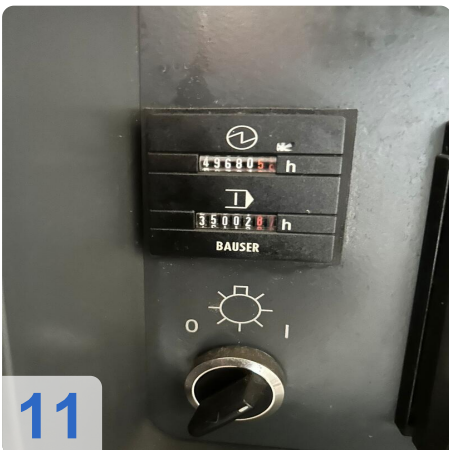
8



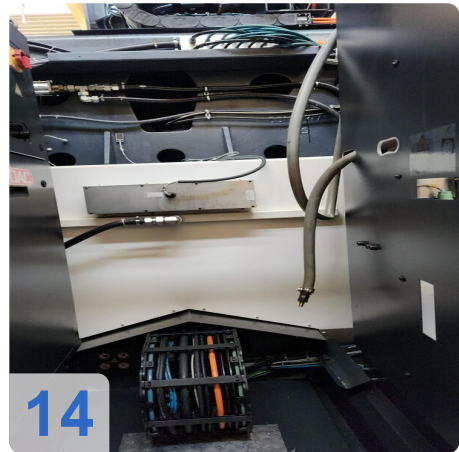
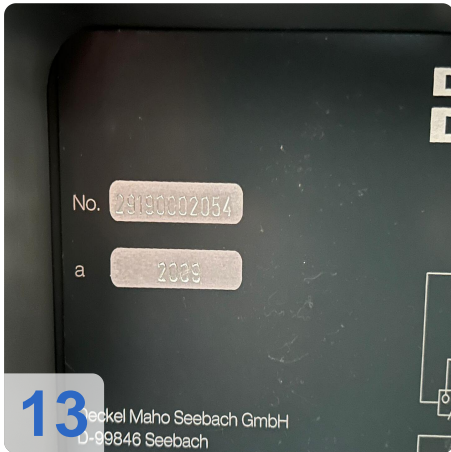
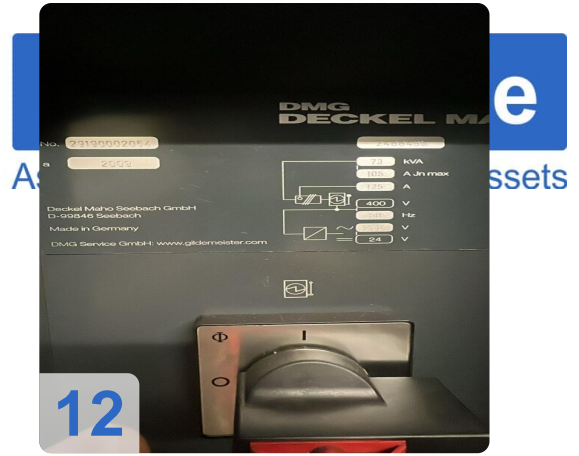
9



10



11

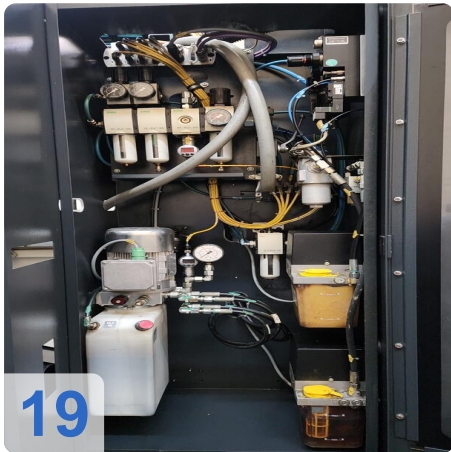




Asset-Trade

e

Assets





Asset-Trade

Assessment & Sale of Used Assets

Video:





Asset-Trade

Assessment & Sale of Used Assets





Asset-Trade

Assessment & Sale of Used Assets



Asset-Trade

**Assessment and Sale of Used Assets world
wide**

Am Sonnenhof 16

47800 Krefeld

Germany

Tel.: +49 2151 32500 33