



# Asset-Trade

Assessment & Sale of Used Assets

Ref. No.: 1450-12120949

## Overview and Technical Data:

4x TOYODA FH 80S HMC for sale from  
Germany

TOYODA

**TOYODA**

Year of Build: Jun 2006

Rebuild year: Mar 2025



## Description:

### Used TOYODA FH 80S - Horizontal Machine Center 4-Axis for Sale

CNC Contols - FANUC Series 16i-MB

**4x Machines Available build 05/2005 to 06/2006**

Technical Data:

- Travel distances:
  - X-Axis: 1.350 mm
  - Y-Axis : 1.150 mm
  - Z-Axis: 1.150 mm
  - B-4th axis: = 1 degrees
  - Distance between spindle nose & table center: 200~1350 mm
  - Fast Travel 24 m / minute
- Table with 2 Pallets :
  - Table size: 800 x 800 mm
  - Table load: 2500 kg
- Spindel:
  - Spindle speed: 10 - 6,000 rpm
  - Spindle power: 37Kw
  - Torque: 600 Nm
- Tool Holder / ATC magazine:
  - Number of tools: 40 pcs CHAIN-TYPE.
  - Tool holder: SK50
  - Max tool length: 550mm
  - Tool changeover time: 20 sec (15kg)
  - max Tool Weight: 35kg
- KNOLL high pressure system: IKZ 80 bar
- Coolant tank: 650Liter
- Chip conveyor
- Dimensions: 5,000 X 7,500 X 4,000 mm
- Weight: 21.000 kg

Machine to be inspected under power by appointment.



## Technical Data:

### Technical Data:

Control: Series 16i  
Spindle Speed: 6.000 rpm  
Tool Holder: SK50  
Tool Capacity: 40 x

### Travels:

X-Axis: 1.350 mm  
Y-Axis: 1.150mm  
Z-Axis: 1.150 mm

### Dimensions and Weight:

Height: 4.000 mm  
Width: 7.500 mm  
Length: 5.000 mm  
Weight: 240.000 kg

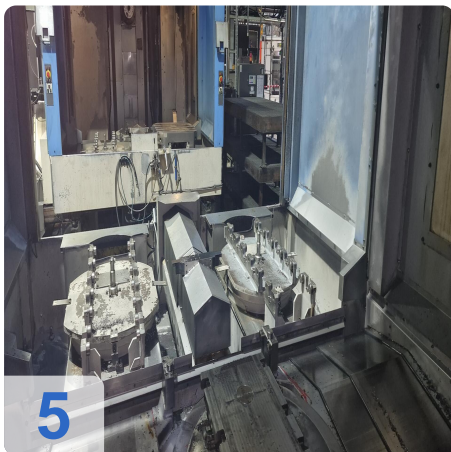
### Buyer Information:

Condition: Normal wear  
Availability: Immediately  
Sold as:  
EXW (Ex Works - Incoterm)  
VAT: 19 %  
Buyers Premium: 18 %  
Location: Germany





## Images:

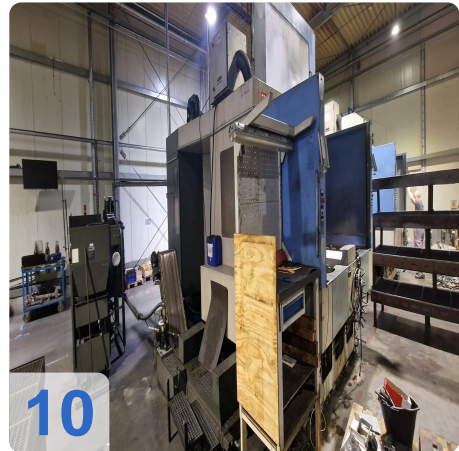
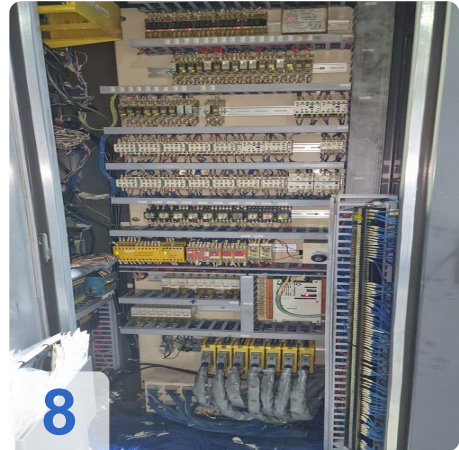




As

e

ssets





# Asset-Trade

Assessment & Sale of Used Assets



**Asset-Trade**

**Assessment and Sale of Used Assets world  
wide**

**Am Sonnenhof 16**

**47800 Krefeld**

**Germany**

**Tel.: +49 2151 32500 33**