



Asset-Trade

Assessment & Sale of Used Assets

Ref. No.: 1444-10311236



Overview and Technical Data:

**KHS PET Filling Line for Coldfill and Hotfill
(500ml -1.5l)**

KHS



Year of Build: Jan 2017



Description:

Complete KHS PET bottling line for soft drinks and juices.

(500ml bottles 13200 units/hr, 1l 12000 units/hr and 1.5l 9000 units/hr)

Including:

- Includes Control systems
- KHS CIP System
- DRV PET packaging
- cap inspector and sterilizer
- bottle drying
- mixing
- Hotfill pausterisation and labelling.

Technical Specifications for KHS PET Filling and Packaging Equipment

Stretch Blow Molding Machines

Machine for Blow Molding Bottles Blomax Serie IV / PET Blomax 6 SBLXHR

Machine for Blow Molding Bottles Blomax Serie IV

Blomax Molds

Blomax Molds

Blomax Molds

Blomax Molds

Blomax Molds

Blomax Peripherals

Blomax Chiller

Water Heater

Consisting of:

PET Blomax 6 SBLXHR

Moulds for 0.5l XHR

Moulds for 1.0l XHR

Moulds 1.5l CSD

Moulds 0.5l CSD

Moulds 1.0l CSD

Boxtiper

Chiller for Blomax

Hot water tempering device



Filling and Packaging Equipment

Innofill DRV VF-NH PET 60/15SV; 36pi	Innofill DRV VF-NH PET 60/15SV; 36pi
Oriented Cap Feeding System	Orientated cap feeding system
Fill Height and Cap Inspection	Fillheight and cap inspection
Innopro Paramix C 19/T32-14	Innopro Paramix C 19/T32-14
Connection of Finished Product Discharge through Double-Walled Rotary Valve	Connection of finished product discharge through double-walled rotary valve
Positioned on the Deaerator	positioned on the deaerator
Innopro HF 15/T20-105-85	Innopro HF 15/T20-105-85
Innopro CIP 1-1000/3-6000/25/A	Innopro CIP 1-1000/3-6000/25/A
Innopro HWSU PET	Innopro HWSU PET
Internal Process Piping Material	KHS Internal process piping material
Hysek Horizontal Tilter (15s)	Hysek horizontal tilter (15s)

Auxiliary and Support Equipment

Hermis Tunnel Cooler/Warmer	Hermis tunnel cooler/warmer
Euoppool HW Bottle Dryer	Euoppool HW bottle dryer TF_02
Finpac Sleever	Finpac Sleever
Euoppool HW Bottle Dryer	Euoppool HW bottle dryer TF_02
Innoket NEO 20 1RF	KHS Labeling Machine Innoket NEO 20 1RF
Label Presence Inspection and Pusher	Label presence inspection and pusher
Linx Laser 30 WT	Laser coding system Linx laser 30 WT
Innopack KISTERS SP60B (4M)	Innopack KISTERS SP60B (4M)
Pallet Stretcher Stand Alone	Pallet stretcher stand alone
Innoline BTR	KHS Bottle Conveyor Systems Innoline BTR
Chain Lubrication (Semi Dry)	Chain lubrication (semi dry)
Innoline ELS-BTR	KHS Bottle Conveyor Systems Innoline ELS-BTR
Innoline GTR	KHS Bottle Conveyor Systems Innoline GTR

Automation and Control Systems

KHS ReDiS Diagnostic System	KHS ReDiS network cabinet
KHS Mixing System	Innopro Paramix C 19/T32-14
KHS Pasteurization System in Hotfill	Innopro HF 15/T20-105-85



KHS CIP (Cleaning-in-Place) System Innopro CIP 1-1000/3-6000/25/A

KHS HWSU Hot Water Generator Innopro HWSU PET

Supplementary Equipment

Cabeling Material KHS Internal process piping material

Component Parts Various component parts

Key Features and Capabilities

- Complete PET bottling solutions including stretch blow molding, filling, capping, labeling, and packaging equipment
- Supports a wide range of bottle sizes from 0.5L to 1.5L
- High-speed production from 12,000 to 80,000 bottles per hour
- Modular design for flexible, customizable configurations
- Proven technology with reliable, long-lasting performance
- Comprehensive automation and control systems for efficient operation
- Available auxiliary and support equipment for a turnkey bottling line
- Experienced technical support and after-sales service



Technical Data:

Technical Data:

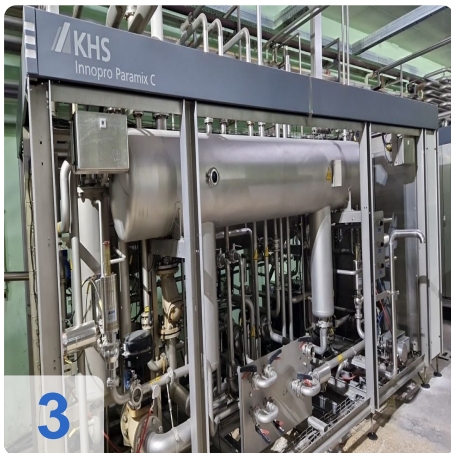
Control: CNC
Machine Hours: 9500

Buyer Information:

Condition: Very good condition
Available: Immediately
Sold as:
EXW (Ex Works - Incoterm)
VAT: 19 %
Buyers Premium: 18 %
Location: Europe



Images:

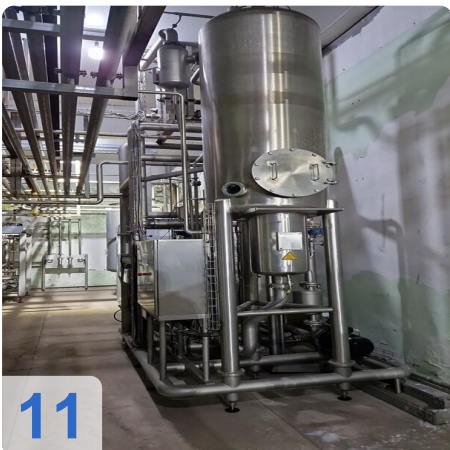




Asset

e

Assets





Asset-Trade

Assessment & Sale of Used Assets



Asset-Trade

**Assessment and Sale of Used Assets world
wide**

Am Sonnenhof 16

47800 Krefeld

Germany

Tel.: +49 2151 32500 33