

Image not found or type unknown



Ref. No.:
1436-09021041

Overview and Technical Data:

HERMLE C800 P machining centre for sale

HERMLE



Year of Build:
Jan 2000

Description:

Used HERMLE C800 P machining center

Used HERMLE C800 P machining center for sale - Ideal for precise, efficient machining processes. If you are looking to buy a used HERMLE C800 P, this machine offers everything you need. Equipped with a HEIDENHAIN TNC 430 CNC control and a new spindle head, this used HERMLE machining center guarantees high precision and reliability.

CNC controls HEIDENHAIN TNC 430
New spindle head

Technical data:

- Travels
 - X-axis: 800 mm

- Y-axis: 500 mm
 - Z-axis: 500 mm
 - Table
 - Table size: 800 x 500 mm
 - Maximum permissible weight on the table: 250 kg
 - Spindle
 - Spindle taper: ISO 40
 - Spindle speed: 20-8000 rpm
 - Spindle Ø: 70 mm
 - IKZ 40 bar
 - Tool changer 30 units
 - Spindle power: 10.5 KW
 - Power supply: 400 V, 50 Hz.
 - Machine dimensions: 2930 x 3260 x 2210 mm
 - Machine weight: 8500 kg.
-

With a spindle power of 10.5 kW and an impressive spindle speed of 8000 rpm, this horizontal machining center is particularly suitable for demanding tasks. If you want to buy a horizontal machining center, the HERMLE C800 P is the perfect choice.

The dimensions of the machine are 2930 x 3260 x 2210 mm and the total weight is 8500 kg. Don't miss the opportunity to purchase this used HERMLE C800 P to make your production efficient and precise.

Technical Data:

Technical Data:

Control:

[TNC 430](#)

Spindle Speed:

8.000 rpm

Tool Holder:

[SK40](#)

Tool Capacity:

30 x

Travels:

X-Axis:

800 mm

Y-Axis:

500mm

Z-Axis:

500 mm

Dimensions and Weight:

Height:

3.260 mm

Width:

2.210 mm

Length:

2.930 mm

Weight:

8.500 kg

Buyer Information:

Condition:

[Very good condition](#)

Availability:

[Immediately](#)

Sold as:

[EXW \(Ex Works - Incoterm\)](#)

VAT:

[19 %](#)

Buyers Premium:

[18 %](#)

Location:

Germany

Images:

 **HERMLE**





HEIDENHAIN

| | | | | | | |
|-------|---|----|---|---|---|---|
| | # | \$ | % | ^ | & | . |
| " | Q | W | E | R | T | Y |
| SHIFT | A | S | D | F | G | H |
| SPACE | Z | X | C | V | B | N |

NUM
MET

CALC

MOD

HELP

100
50
0

180
90
270

0.5 %

| | | | |
|-----|----|-----|----|
| IV+ | Z+ | Y+ | V+ |
| X- | ~ | X+ | |
| Y- | Z- | IV- | V- |

2

1

2







Asset-Trade

Assessment and Sale of Used Assets world wide

Am Sonnenhof 16

47800 Krefeld

Germany

Tel.: +49 2151 32500 33

Fax.: +49 2151 65 29 22

Email: info@asset-trade.de

Web.: <https://mail.asset-trade.de/en>

Ref. No.:
1436-09021041

Overview and Technical Data:

HERMLE C800 P machining centre for sale

HERMLE



Year of Build:
Jan 2000

Description:

Used HERMLE C800 P machining center

Used HERMLE C800 P machining center for sale - Ideal for precise, efficient machining processes. If you are looking to buy a used HERMLE C800 P, this machine offers everything you need. Equipped with a HEIDENHAIN TNC 430 CNC control and a new spindle head, this used HERMLE machining center guarantees high precision and reliability.

CNC controls HEIDENHAIN TNC 430
New spindle head

Technical data:

- Travels
 - X-axis: 800 mm
 - Y-axis: 500 mm
 - Z-axis: 500 mm
- Table
 - Table size: 800 x 500 mm
 - Maximum permissible weight on the table: 250 kg
- Spindle
 - Spindle taper: ISO 40
 - Spindle speed: 20-8000 rpm

- Spindle Ø: 70 mm
 - IKZ 40 bar
 - Tool changer 30 units
 - Spindle power: 10.5 KW
 - Power supply: 400 V, 50 Hz.
 - Machine dimensions: 2930 x 3260 x 2210 mm
 - Machine weight: 8500 kg.
-

With a spindle power of 10.5 kW and an impressive spindle speed of 8000 rpm, this horizontal machining center is particularly suitable for demanding tasks. If you want to buy a horizontal machining center, the HERMLE C800 P is the perfect choice.

The dimensions of the machine are 2930 x 3260 x 2210 mm and the total weight is 8500 kg. Don't miss the opportunity to purchase this used HERMLE C800 P to make your production efficient and precise.

Technical Data:

Technical Data:

Control:

[TNC 430](#)

Spindle Speed:

8.000 rpm

Tool Holder:

[SK40](#)

Tool Capacity:

30 x

Travels:

X-Axis:

800 mm

Y-Axis:

500mm

Z-Axis:

500 mm

Dimensions and Weight:

Height:

3.260 mm

Width:

2.210 mm

Length:

2.930 mm

Weight:

8.500 kg

Buyer Information:

Condition:

[Very good condition](#)

Availability:

[Immediately](#)

Sold as:

[EXW \(Ex Works - Incoterm\)](#)

VAT:

[19 %](#)

Buyers Premium:

[18 %](#)

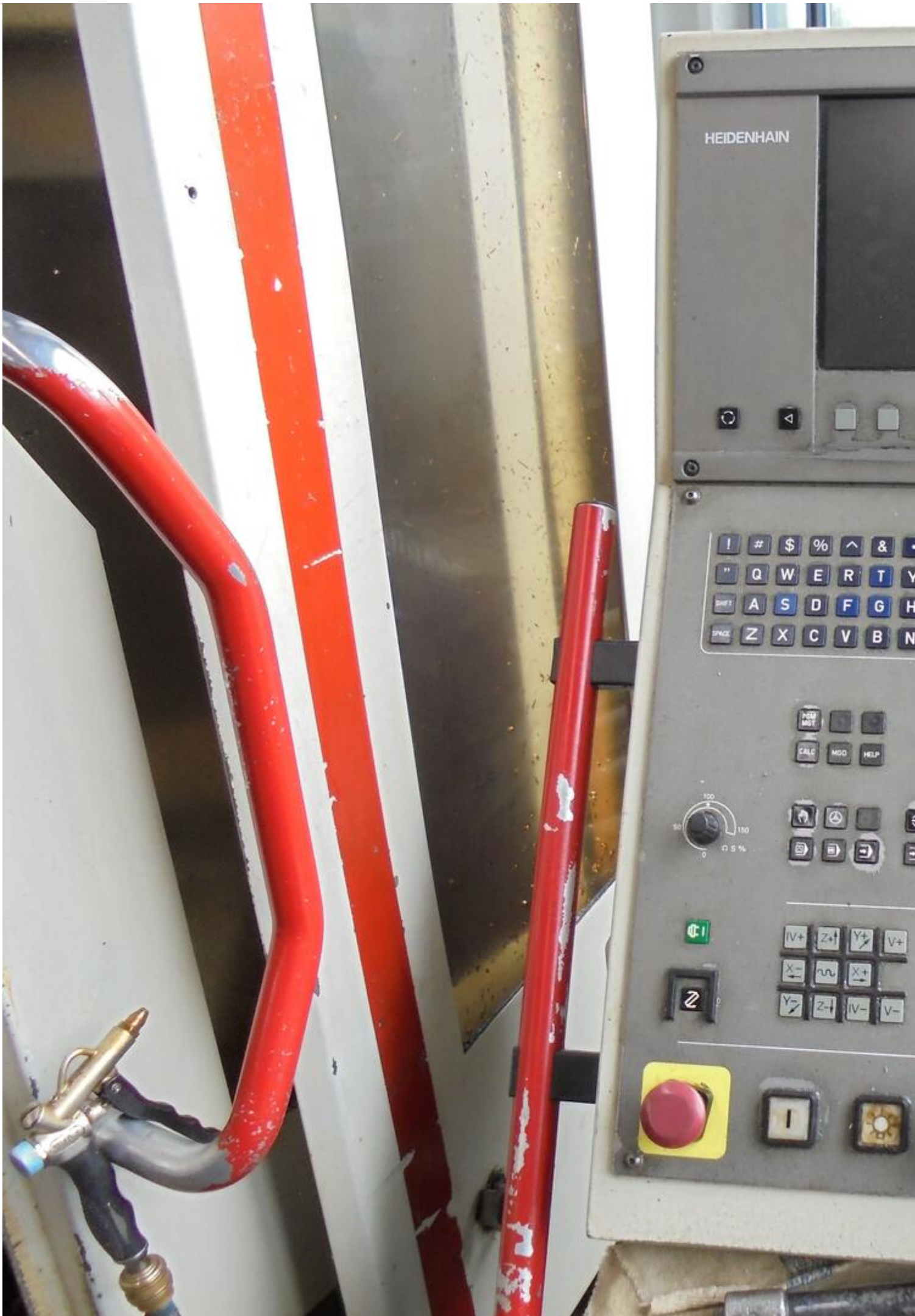
Location:

Germany

Images:

 **HERMLE**





HEIDENHAIN

| | | | | | | |
|-------|---|----|---|---|---|---|
| | # | \$ | % | ^ | & | . |
| " | Q | W | E | R | T | Y |
| SHIFT | A | S | D | F | G | H |
| SPACE | Z | X | C | V | B | N |

NUM
MET

CALC

MOD

HELP

100
50
0

180
90
270

0.5 %

| | | | |
|-----|----|-----|----|
| IV+ | Z+ | Y+ | V+ |
| X- | ~ | X+ | |
| Y- | Z- | IV- | V- |

2

1

2







Asset-Trade

Assessment and Sale of Used Assets world wide

Am Sonnenhof 16

47800 Krefeld

Germany

Tel.: +49 2151 32500 33

Fax.: +49 2151 65 29 22

Email: info@asset-trade.de

Web.: <https://mail.asset-trade.de/en>

Generated on 19.04.2026

© Copyright 2026 - [Asset-Trade](#)

Page