

Image not found or type unknown



Ref. No.:  
1504-01301300

## Overview and Technical Data:

# Used SALVAGNINI S4 + P4-2420 Panel Bender with Punching line

[SALVAGNINI](#)

# salva

Year of Build:  
Jan 1991

## Description:

# Used SALVAGNINI S4 + P4-2420 Panel Bender & Punching machine

## Technical Data:

- Maximum length x width of incoming sheet: 2420 mm
- Minimum length x width of incoming sheet: 436x 130 mm
- Maximum diagonal of incoming sheet: 2220 mm
- Maximum bend height: 203 mm
- Maximum material thickness: 2.0 mm
- Minimum material thickness: 0.5 mm
- Loading: automatic / manual
- Carrying capacity 5000 kg

---

**The Salvagnini S4 +P4 System** are flexible lines for producing panels from packs of sheet metal. The punching, shearing and bending process are integrated to eliminate material handling. The S4+P4 System can also run as separate work cells. The intrinsic flexibility of the individual S4 and P4 System extends to the

hole line.

### **Efficient production:**

The production process from the raw material to the finished panel takes place on a single machining line. This offers concrete saving in terms of processing times, work in progress, space occupied, logistic costs and staff. the possibility of operating as integrated separate punching/Shearing and panel forming cells further increases production efficiency.

### **SALVAGNINI P4 bending unit**

The Bending Unit of the P4 Panel Bender is the fruit of exclusive Salvagnini technology. It allows the bending angle to remain constant from one panel to the another and form one batch to another, for the same material and thickness. It also enables different thicknesses to be bent with the same tool.

The rigidity of the bending tools keeps the bent edge straight and constant along the edge of the sheet regardless of the length and thickness of the panel.

An unlimited number of up and down bends can be made without removing the panels from teh work surface.

### **SALVAGNINI P4 manipulator**

The manipulator of the P4 Panel Bender handles the sheet automatically, rotating it by 90°, 180° or 270° or indeed my any other intermediate angle.

The notches other than the edges of the punched sheet are used as reference for positioning it. this obviously contributes to the excellent precision of the component produced, which is further guaranteed by totally accurate manipulator movements.

The SALVAGNINI P4-2420 is also equipped with a number of features that make it a very user-friendly machine, including:

- Easy-to-use touchscreen interface
- Integrated OPS software for managing production sequences
- Automatic tool changeover
- Zero-setup tooling

The machine is typically used to produce sheet metal components for a variety of industries, including:

- Automotive
- Aerospace
- HVAC
- Medical
- Retail

### **Technical Data:**

### **Technical Data:**

Control:

[CNC](#)

### **Buyer Information:**

Condition:

[Very good condition](#)

Available:

[Immediately](#)

Sold as:

[EXW \(Ex Works - Incoterm\)](#)

VAT:

[19 %](#)

Buyers Premium:

[18 %](#)

Location:

Germany

**Images:**

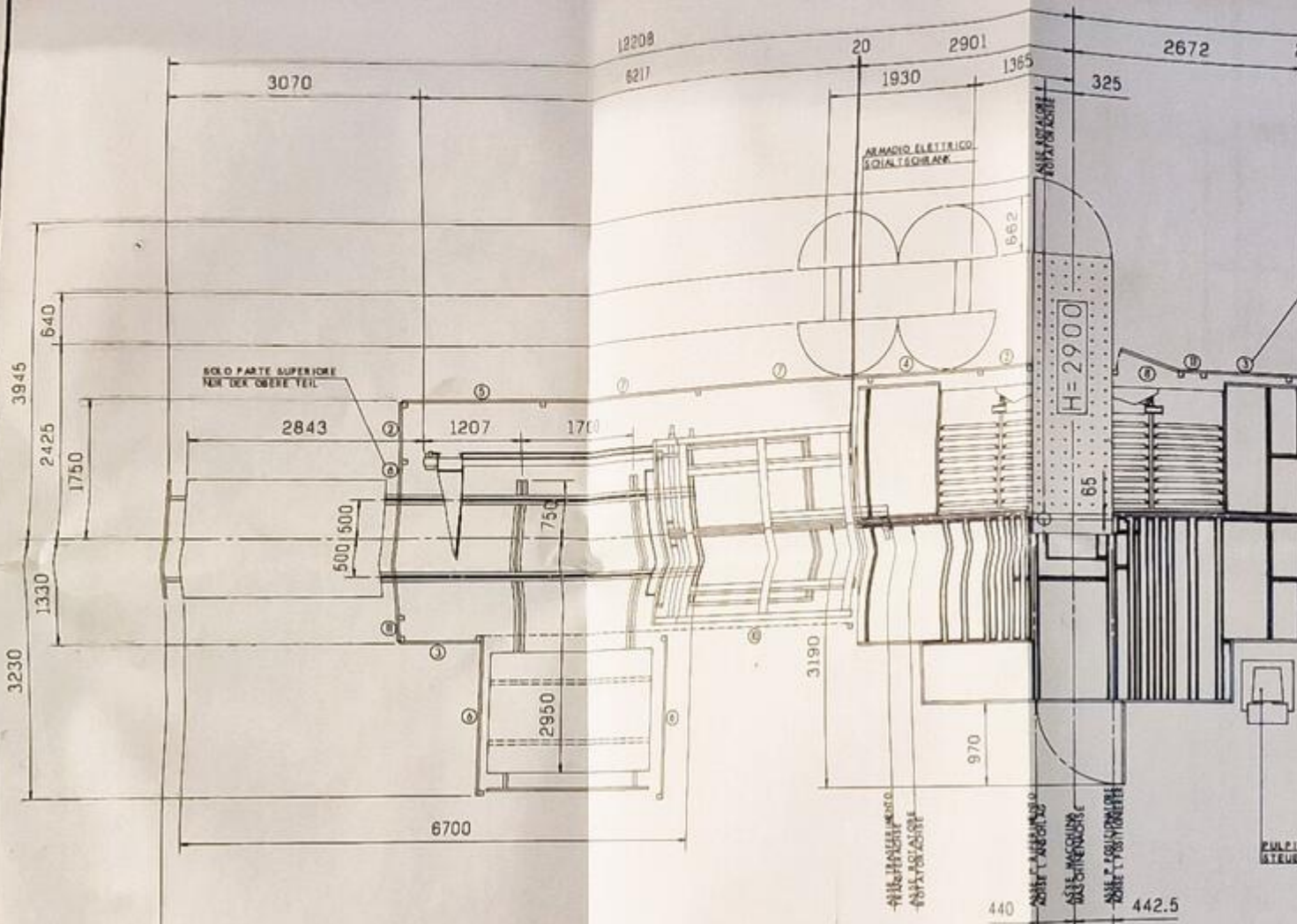




TL24155C PUR15 TC24155F CTRUR24

TDU25  
APMA125

54-25.S.B.31



26640

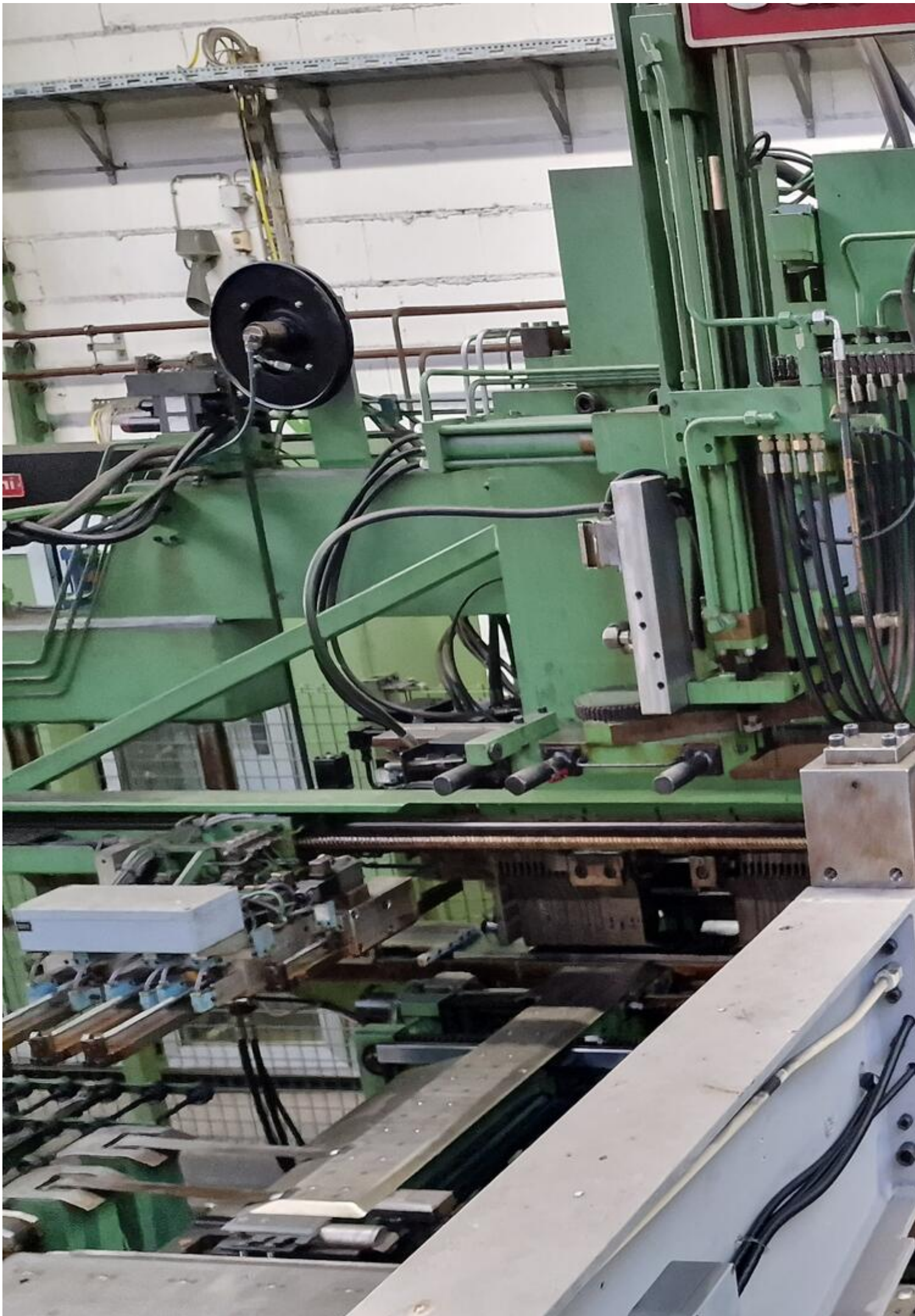
IN QUESTO TRATTO, L'ALTEZZA DEL FOGLIO DAL PAVIMENTO, DURANTE  
IN DIESEM ABSCHNITT BETRACHT DIE HOEHE DER PLATINE BEIM TRANSP.

ELENCO DELLE LUNGHEZZE DELLE PROTEZIONI ANTINFORTUNISTICHE  
LISTE DER LÄNGEN DER UNFALLSCHUTZVORRICHTUNGEN

- |                           |                           |
|---------------------------|---------------------------|
| ① 490 mm. 95900 A2        | ⑩ barriera offico         |
| ② 740 mm. 95901 A2        | ⑪ opliche schranke        |
| ③ 990 mm. 95902 A2        | ⑫ 290 mm. 96994 A2        |
| ④ 1490 mm. 95903 A2       | ⑬ 950 mm. (portal) (tuer) |
| ⑤ 1740 mm. 95898 A2       | ⑭ 3600 mm. 101986 A2      |
| ⑥ 1990 mm. 95904 A2       | ⑮ 1240 mm. 95888 A2       |
| ⑦ 2490 mm. 95905 A2       | ⑯ 2190 mm. 100147 A2      |
| ⑧ 750 mm. (portal) (tuer) | ⑰ 1090 mm. 100146 A2      |
| ⑨ 3000 mm. 101985 A2      | ⑱ 1440 mm. 102402 A2      |

L'ALTEZZA DELLE PROTEZIONI E' DI 1600 mm.  
DIE HOEHE DER SCHUTZVORRICHTUNGEN BETRACHT 1600 mm.























S4

WIP TO 100.000  
Temperature: 20.0 °C  
Ex 100.000.000  
100.000.000





























Asset-Trade

Assessment and Sale of Used Assets world wide

Am Sonnenhof 16

47800 Krefeld

Germany

Tel.: +49 2151 32500 33

Fax.: +49 2151 65 29 22

Email: [info@asset-trade.de](mailto:info@asset-trade.de)

Web.: <https://mail.asset-trade.de/en>

Ref. No.:

1504-01301300

**Overview and Technical Data:**

# Used SALVAGNINI S4 + P4-2420 Panel Bender with Punching line

SALVAGNINI

# salva

Year of Build:  
Jan 1991

## Description:

## Used SALVAGNINI S4 + P4-2420 Panel Bender & Punching machine

Technical Data:

- Maximum length x width of incoming sheet: 2420 mm
- Minimum length x width of incoming sheet: 436x 130 mm
- Maximum diagonal of incoming sheet: 2220 mm
- Maximum bend height: 203 mm
- Maximum material thickness: 2.0 mm
- Minimum material thickness: 0.5 mm
- Loading: automatic / manual
- Carrying capacity 5000 kg

---

**The Salvagnini S4 +P4 System** are flexible lines for producing panels from packs of sheet metal. The punching, shearing and bending process are integrated to eliminate material handling. The S4+P4 System can also run as separate work cells. The intrinsic flexibility of the individual S4 and P4 System extends to the hole line.

### Efficient production:

The production process from the raw material to the finished panel takes place on a single machining line. This offers concrete saving in terms of processing times, work in progress, space occupied, logistic costs and staff. the possibility of operating as integrated separate punching/Shearing and panel forming cells further increases production efficiency.

**SALVAGNINI P4 bending unit**

The Bending Unit of the P4 Panel Bender is the fruit of exclusive Salvagnini technology. It allows the bending angle to remain constant from one panel to the another and form one batch to another, for the same material and thickness. It also enables different thicknesses to be bent with the same tool.

The rigidity of the bending tools keeps the bent edge straight and constant along the edge of the sheet regardless of the length and thickness of the panel.

An unlimited number of up and down bends can be made without removing the panels from teh work surface.

### **SALVAGNINI P4 manipulator**

The manipulator of the P4 Panel Bender handles the sheet automatically, rotating it by 90°, 180° or 270° or indeed my any other intermediate angle.

The notches other than the edges of the punched sheet are used as reference for positioning it. this obviously contributes to the excellent precision of the component produced, which is further guaranteed by totally accurate manipulator movements.

The SALVAGNINI P4-2420 is also equipped with a number of features that make it a very user-friendly machine, including:

- Easy-to-use touchscreen interface
- Integrated OPS software for managing production sequences
- Automatic tool changeover
- Zero-setup tooling

The machine is typically used to produce sheet metal components for a variety of industries, including:

- Automotive
- Aerospace
- HVAC
- Medical
- Retail

### **Technical Data:**

#### **Technical Data:**

Control:

[CNC](#)

#### **Buyer Information:**

Condition:

[Very good condition](#)

Available:

[Immediately](#)

Sold as:

[EXW \(Ex Works - Incoterm\)](#)

VAT:

[19 %](#)

Buyers Premium:

18 %

Location:

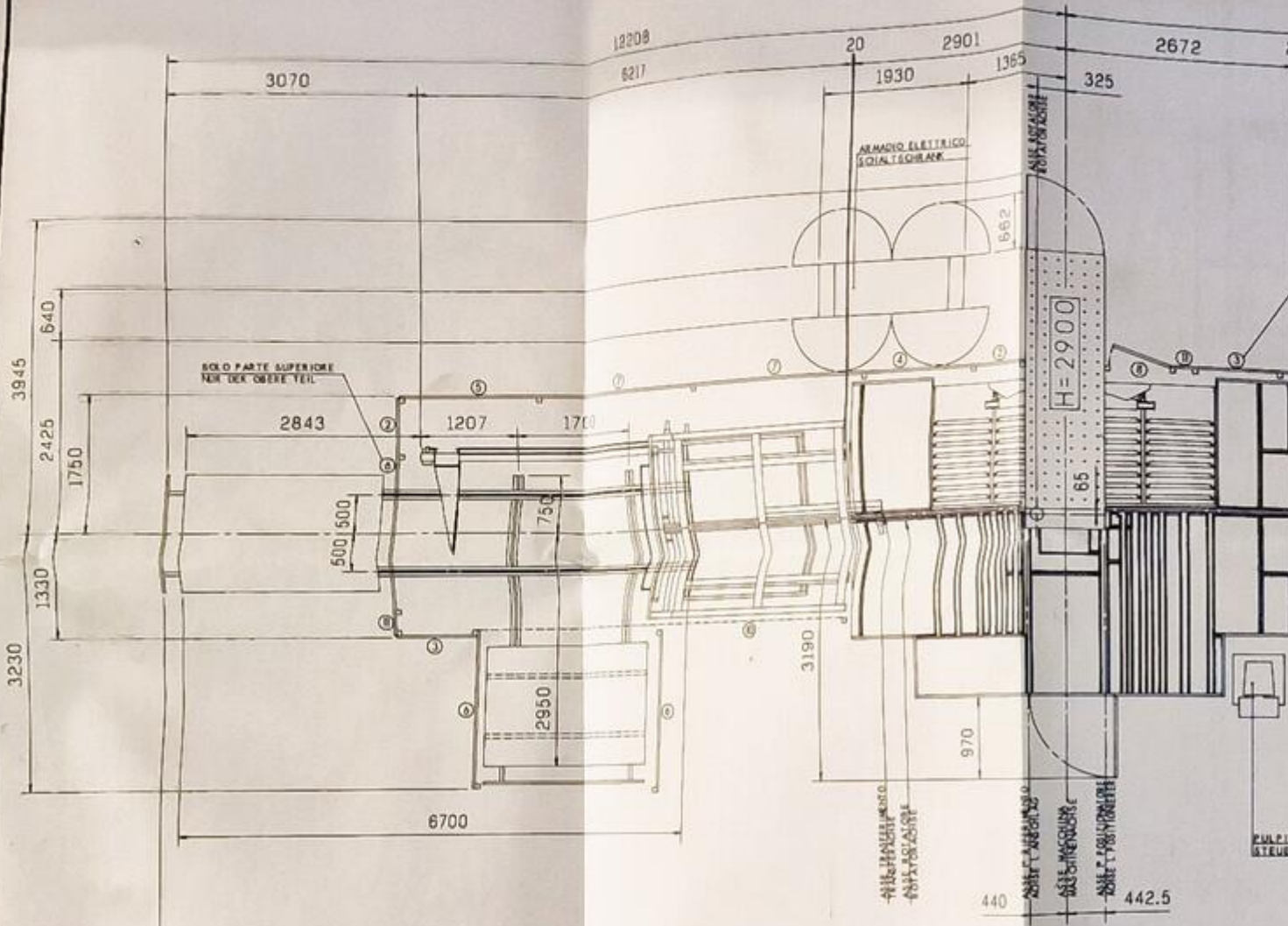
Germany

**Images:**









ELENCO DELLE LUNGHEZZE DELLE PROTEZIONI ANTINFORTUNISTICHE  
LISTE DER LÄNGEN DER UNFALLSCHUTZVORRICHTUNGEN

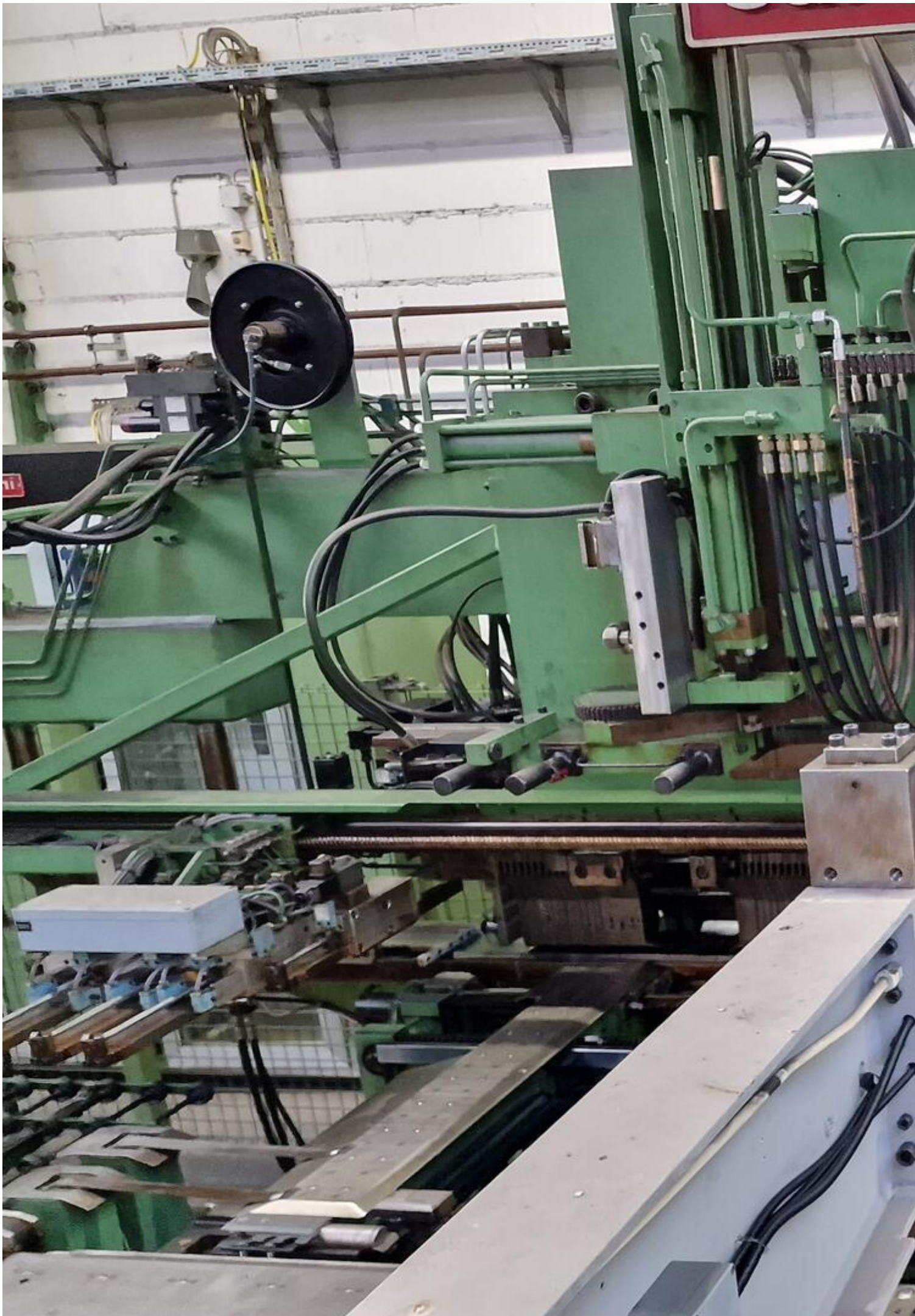
- |                           |                           |
|---------------------------|---------------------------|
| ① 490 mm. 95900 A2        | ⑩ barriera offico         |
| ② 740 mm. 95901 A2        | ⑪ opliche schranke        |
| ③ 990 mm. 95902 A2        | ⑫ 290 mm. 96994 A2        |
| ④ 1490 mm. 95903 A2       | ⑬ 950 mm. (portal) (1100) |
| ⑤ 1740 mm. 95898 A2       | ⑭ 3600 mm. 101986 A2      |
| ⑥ 1990 mm. 95904 A2       | ⑮ 1240 mm. 95888 A2       |
| ⑦ 2490 mm. 95905 A2       | ⑯ 2190 mm. 100147 A2      |
| ⑧ 750 mm. (portal) (1100) | ⑰ 1090 mm. 100146 A2      |
| ⑨ 3000 mm. 101985 A2      | ⑱ 1440 mm. 102402 A2      |

L'ALTEZZA DELLE PROTEZIONI E' DI 1600 mm.  
DIE HOEHE DER SCHUTZVORRICHTUNGEN BETRACHTET 1600 mm.

26640

IN QUESTO TRATTO, L'ALTEZZA DEL FOGLIO DAL PAVIMENTO, DURANTE IL TRANSPORTO, NON DEVE SUPERARE I 1600 MM.  
IN DIESEM ABSCHNITT BETRACHTET DIE HOEHE DER PLATINE BEIM TRANSPORT NICHT 1600 MM.























S4

WIP TO 100.000  
Temperature: 20.0 °C  
Ex. and In. 100.000  
100.000.000-100.000



























Asset-Trade

Assessment and Sale of Used Assets world wide

Am Sonnenhof 16

47800 Krefeld

Germany

Tel.: +49 2151 32500 33

Fax.: +49 2151 65 29 22

Email: [info@asset-trade.de](mailto:info@asset-trade.de)

Web.: <https://mail.asset-trade.de/en>

Generated on 18.12.2025

© Copyright 2025 - [Asset-Trade](#)

Page