



Asset-Trade

Assessment & Sale of Used Assets

Ref. No.: 1452-12231334



Overview and Technical Data:

Used KRAUSS MAFFEI KM160/750 CX for Sale

KRAUSSMAFFEI

Year of Build: Jan 2008



Description:

Buy used Krauss Maffei 160/750 CX injection molding machine

Technical data:

- Clamping force: 1600 KN
- Screw diameter: 50 mm
- Max. Shot weight: 325 g
- Clear tie bar spacing: 560 x 560
- Min. mold installation height: 350 mm
- Max. Mold opening stroke: 700 mm
- Centering ring diameter: 160 mm
- Number of core pulls: 2
- Cascade control: no
- Handling: no
- Hydraulic valve gate nozzle
- Interface: Euromap 67



Technical Data:

Technical Data:

Control: CNC

Machine Hours: 27207

Dimensions and Weight:

Height: 2.200 mm

Length: 4.900 mm

Width: 1.610 mm

Weight: 1.862 kg

Buyer Information:

Condition: Very good condition

Available: Sold

Sold as:

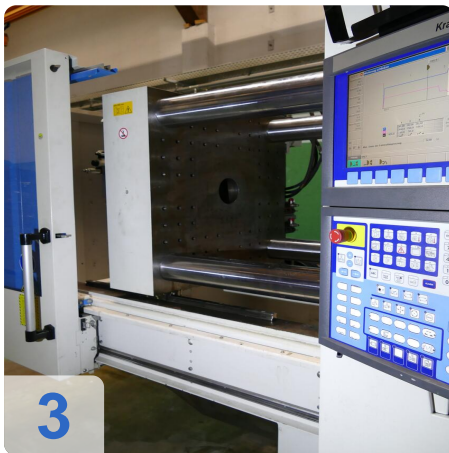
EXW (Ex Works - Incoterm)

VAT: 19 %

Location: Germany



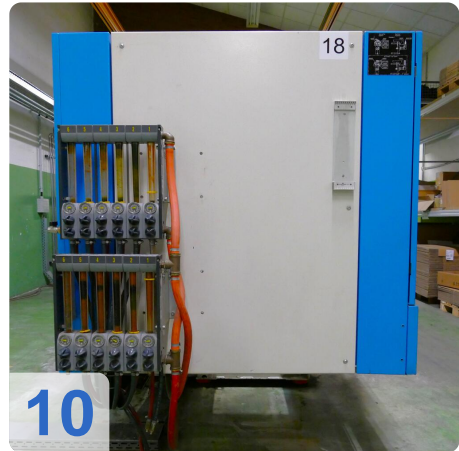
Images:





Asset-Trade

Assets





Asset-Trade

Assessment & Sale of Used Assets



Asset-Trade

**Assessment and Sale of Used Assets world
wide**

Am Sonnenhof 16

47800 Krefeld

Germany

Tel.: +49 2151 32500 33