



# Asset-Trade

Assessment & Sale of Used Assets

Ref. No.: 142607010911

## Overview and Technical Data:

Loroch CNC Turbo 910 circular saw sharpening machine

LOROCH



Year of Build: Jan 1997



## Description:

### Used LORCH CNC Turbo 910 saw blade sharpening machine

Technische Daten;

- Grinding range:
  - Min. saw blade Ø: approx. Ø 80 mm
  - Max. Saw blade Ø: approx. Ø 910 mm
  - Smallest tooth pitch: approx. 16
  - Largest tooth pitch: approx. 999
  - Max. saw blade width Saw blade width: approx. 8 mm
  - Min. tooth height: approx. 1.2 mm
  - Max. tooth height Tooth height: approx. 14 mm
- Grinding wheels up to 250 mm
- Grinding wheel width: approx. 1.5 - 18 mm
- Spindle speed: 50-220 rpm
- X-axis: 510 mm
- Y-axis: 910 mm
- Lateral chamfering or bevelling up to max. 45 degrees
- Working speed: approx. 15 - 180 teeth / min
- Drive power: approx. 1.1 kW
- Dressing unit for ceramic grinding wheels
- Grinding with CBN + DIA + ceramic grinding wheels
- CAD programme for own tooth form programming
- A fire extinguishing system Kraft and Bauer
- Extraction as well as cleaning system with magnetic separator
- Coolant oil
- Total power requirement: 1.1 kW

According to Loroch, a circuit board seems to be defective on this machine, which is why there are problems with referencing. approx. 800 Euro

---

Powerful service centre for metal-cutting circular saw blades



## Technical Data:

### Technical Data:

Control: CNC

### Dimensions and Weight:

Height: 1.850 mm

Length: 1.550 mm

Width: 800 mm

Weight: 925 kg

### Buyer Information:

Condition: Repairs required

Available: Immediately

Sold as:

EXW (Ex Works - Incoterm)

VAT: 19 %

Buyers Premium: 18 %

Location: Germany



## Images:

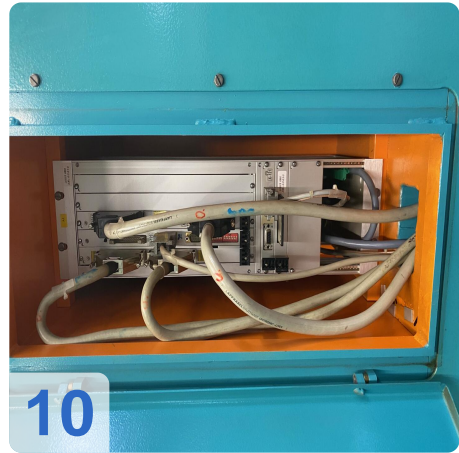
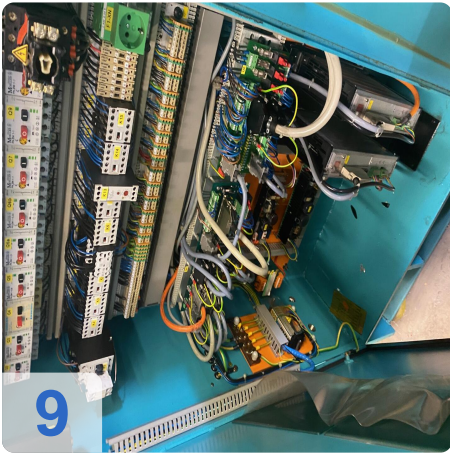
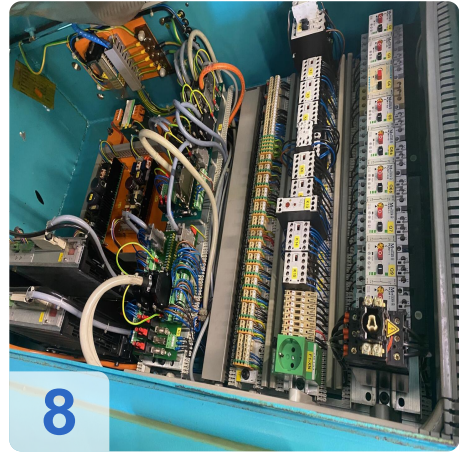
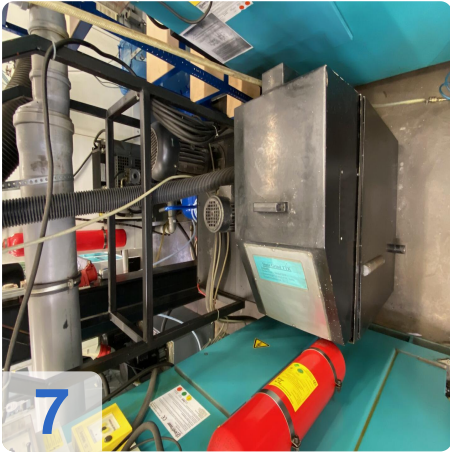
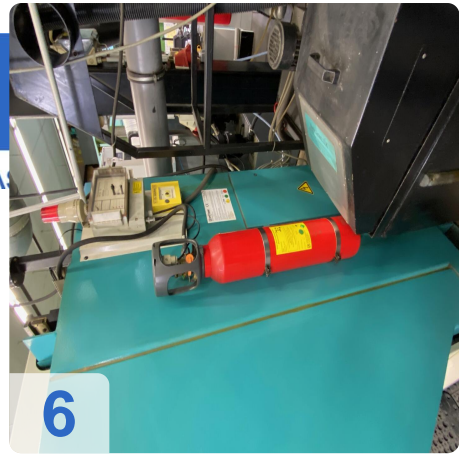




As

e

ssets





e

A

ssets

12



# Asset-Trade

Assessment & Sale of Used Assets



**Asset-Trade**

**Assessment and Sale of Used Assets world  
wide**

**Am Sonnenhof 16**

**47800 Krefeld**

**Germany**

**Tel.: +49 2151 32500 33**