

Image not found or type unknown



Ref. No.:
1426-06271247

Overview and Technical Data:

WALDRICH POREBA PF-S-75 Portal Milling Machine 8.4m with Siemens

WALDRICH COBURG



WALDRICH

Year of Build:
Jan 1974
Rebuild year:
Jan 2006

Description:

Used WALDRICH SIEGEN / POREBA PF S 75 8.4m Portal Milling Machine

Retrofitted with New Siemens 840D CNC Controls

Technical Data:

- Table length: 8400mm x 2400mm
- Distance between Columns: 2.350 mm
- Table Weight: max. 35 tons
- Axis

- X-Axis 8400mm - max travels 3.2 metres per minute
- Y-Axis: 3000mm - max travels 2.5 metres per minute
- W-Axis: 2500mm - max travels 2.5 metres per minute
- Z-Axis: quill extension: 500 mm - max travels 0.5 metres per minute length
- Spindle: 600 rpm
- Tool Holder: SK 60
- Square Head can be fitted under Quill:
 - Max Length 800 mm
 - Extension : 250 mm
- With many spare parts
- With Tool setter Gildemeister

Still in Operation !!!

Further Data on request.

Technical Data:

Technical Data:

Control:

[SINUMERIK 840D](#)

Spindle Speed:

600 rpm

Tool Holder:

[SK 60](#)

Travels:

X-Axis:

8.400 mm

Y-Axis:

3.000mm

Z-Axis:

500 mm

Buyer Information:

Condition:

[Very good condition](#)

Availability:

[Sold](#)

Sold as:

[EXW \(Ex Works - Incoterm\)](#)

VAT:

[21 %](#)

Buyers Premium:

[18 %](#)

Location:

Netherlands

Images:



WALDRICH
SIEGEN

PROFBA

Produktions-Nr. 1000000000
1000000000
1000000000

1000000000

1000000000



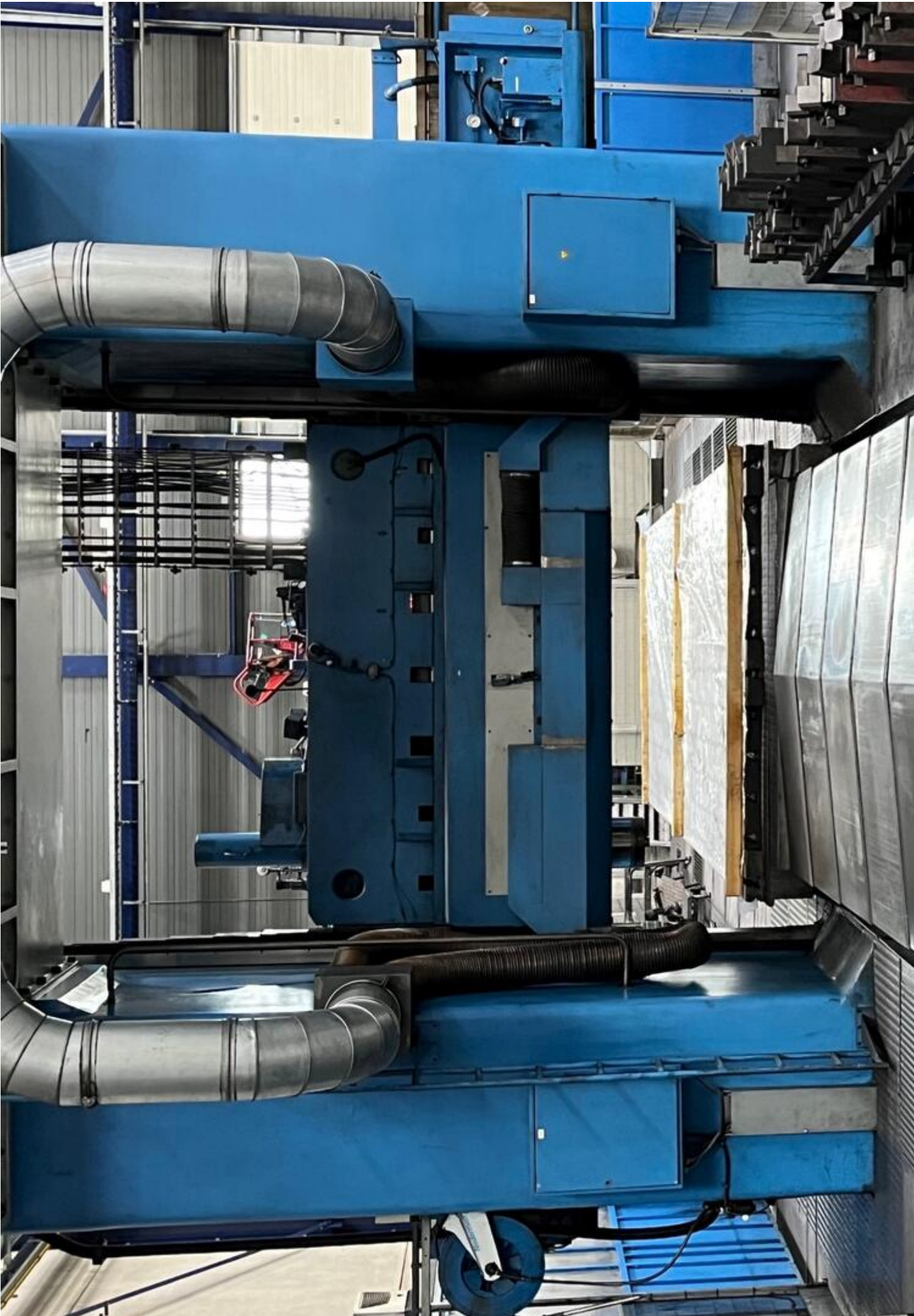




 **KONECRANES**

JCS316 **20.0t**

WALDRICH
SIEDEN
POREBA





WALDRICH
SIEGEN
POREBA

007 700 250 000
HALLE 17
1
1000963548

27/3'23

11580





SPILBELASTING

SIEMENS

SINUMERIK

Machine CHAN1 JOG SYF DIR OSTORE1.SYF
 Programma geannuleerd

Kanaal onderbroken
 Stop: geen BAG - Ready
 3000 Noodstop

TCS	Positie	Repos-versch	Masterspil	S1
X	3272.000 mm	0.000	Act.	0 elmin
Y	1638.947 mm	0.000	Ing.	0 elmin
W	1895.790 mm	0.000	Pos.	0 grd
Z	115.625 mm	0.000	Vermogen	105.0 %

Voeding [mm/min]
 Act. 0.000 0.0 %
 Ing. 0.000

Geredschap
 Geledeerd geredschap
 G01 G40

Act. wdr. instellen Toucheren

SIEMENS

SIEMENS keyboard and function keys

SIEMENS

SIEMENS emergency stop and control panel

KLEMMEN
 GEREEDSCHAP KLEMMEN
 LOSSEN
 OVERBRUGGING
 ZAS
 VERBODEN
 GEREEDSCHAP







ELADT

Castrol



SPM

INDEBOLL







FEESTORGEN 2020

STORCK

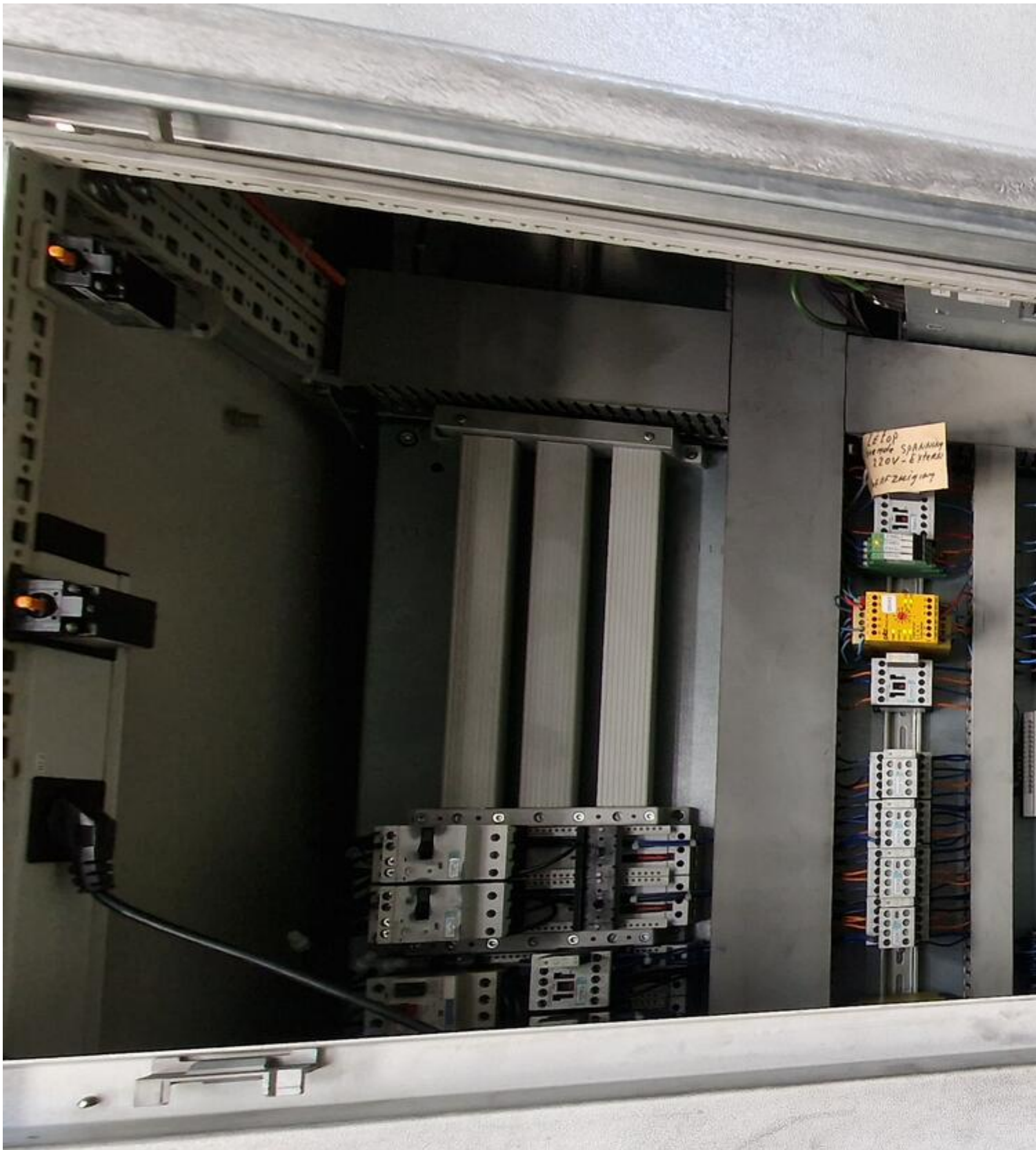
STORCK



220
1000
001







1.6.10p
120V - External
120V Zmignij

















B





SPIELBELASTING



KLEMMEN

LOSSEN

OVERBRUGGING

GEREEDSCHAP KLEMMING

ZAS

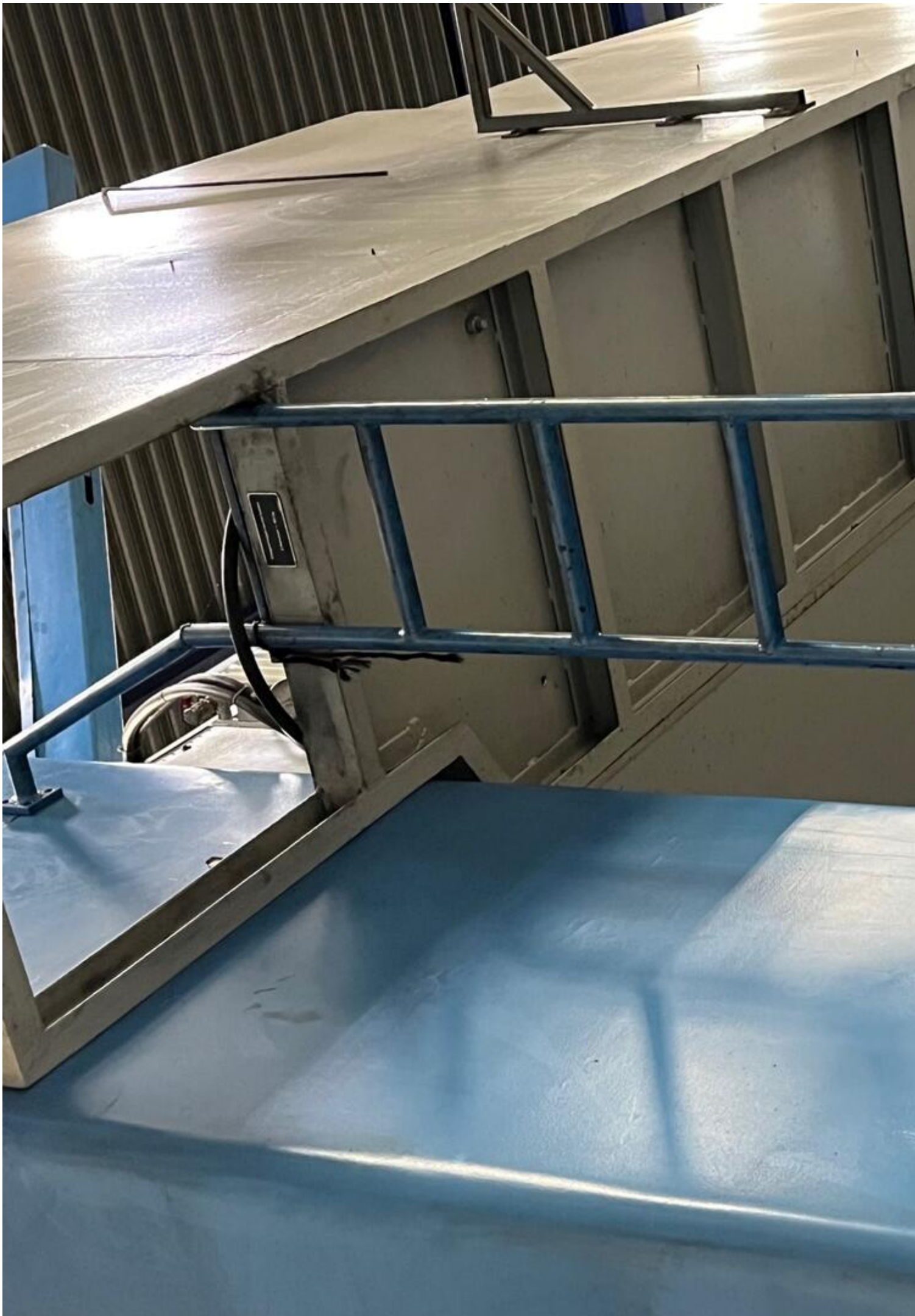
VRUGA

GEREEDSCHAPWISSEL



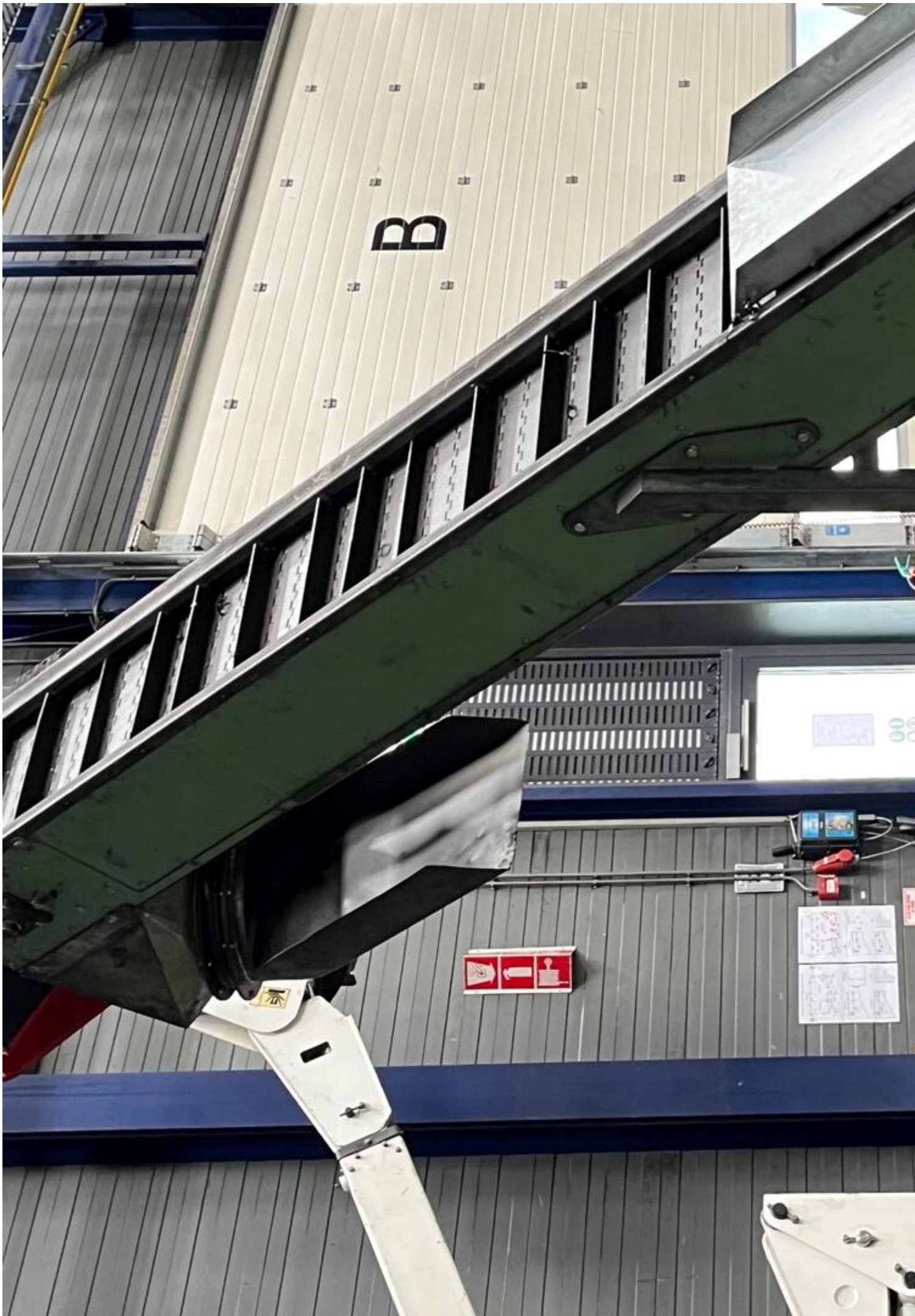






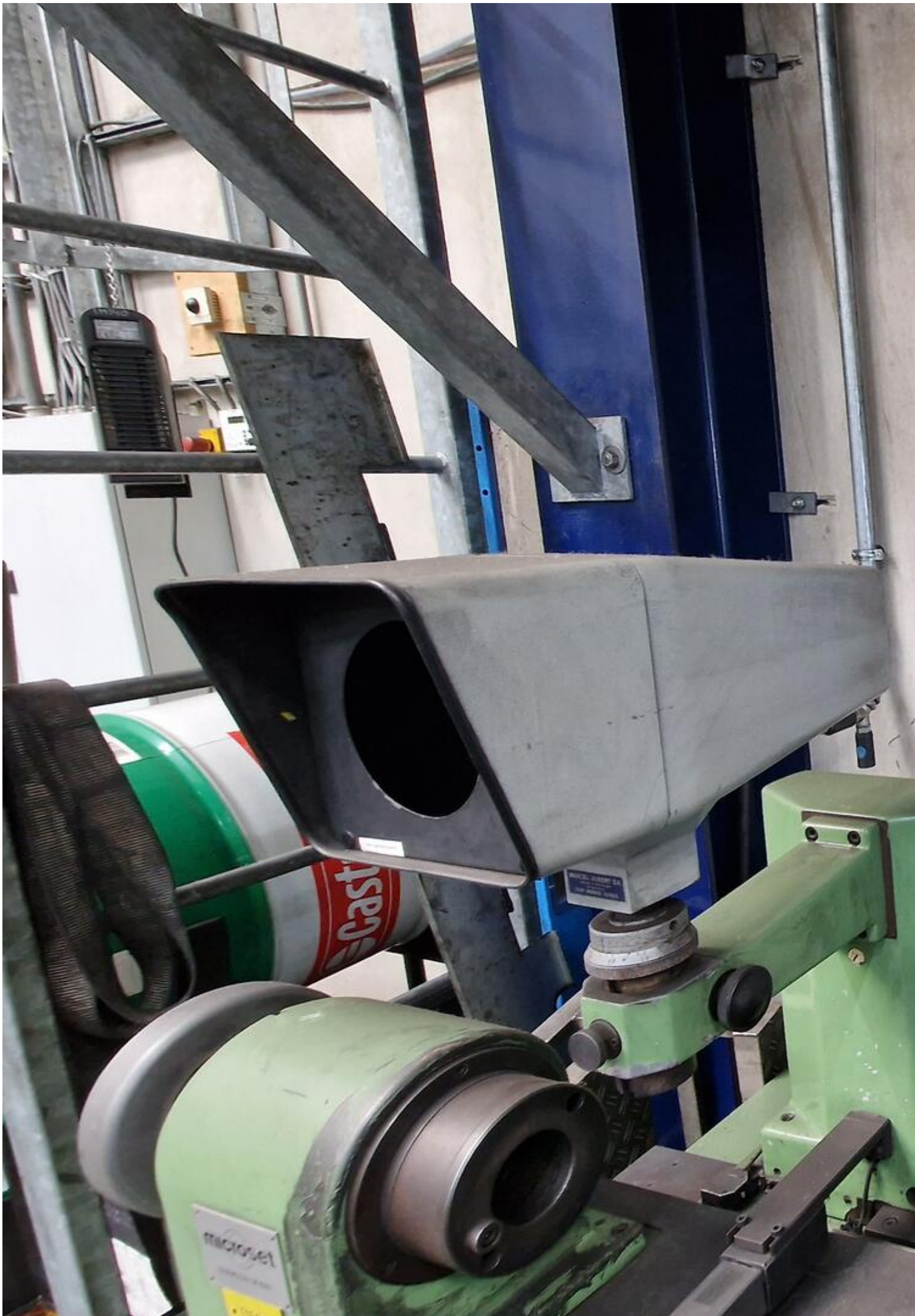


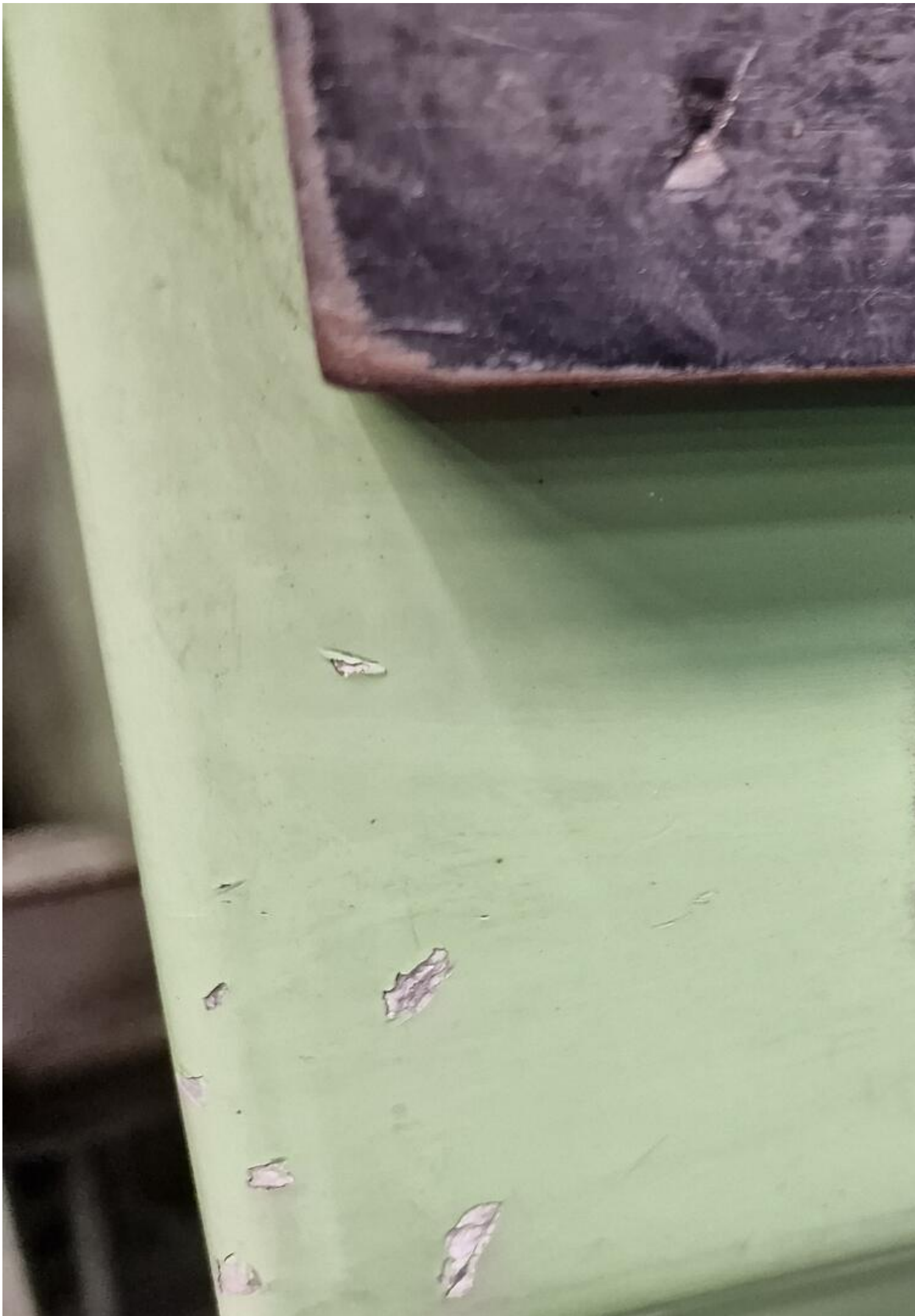






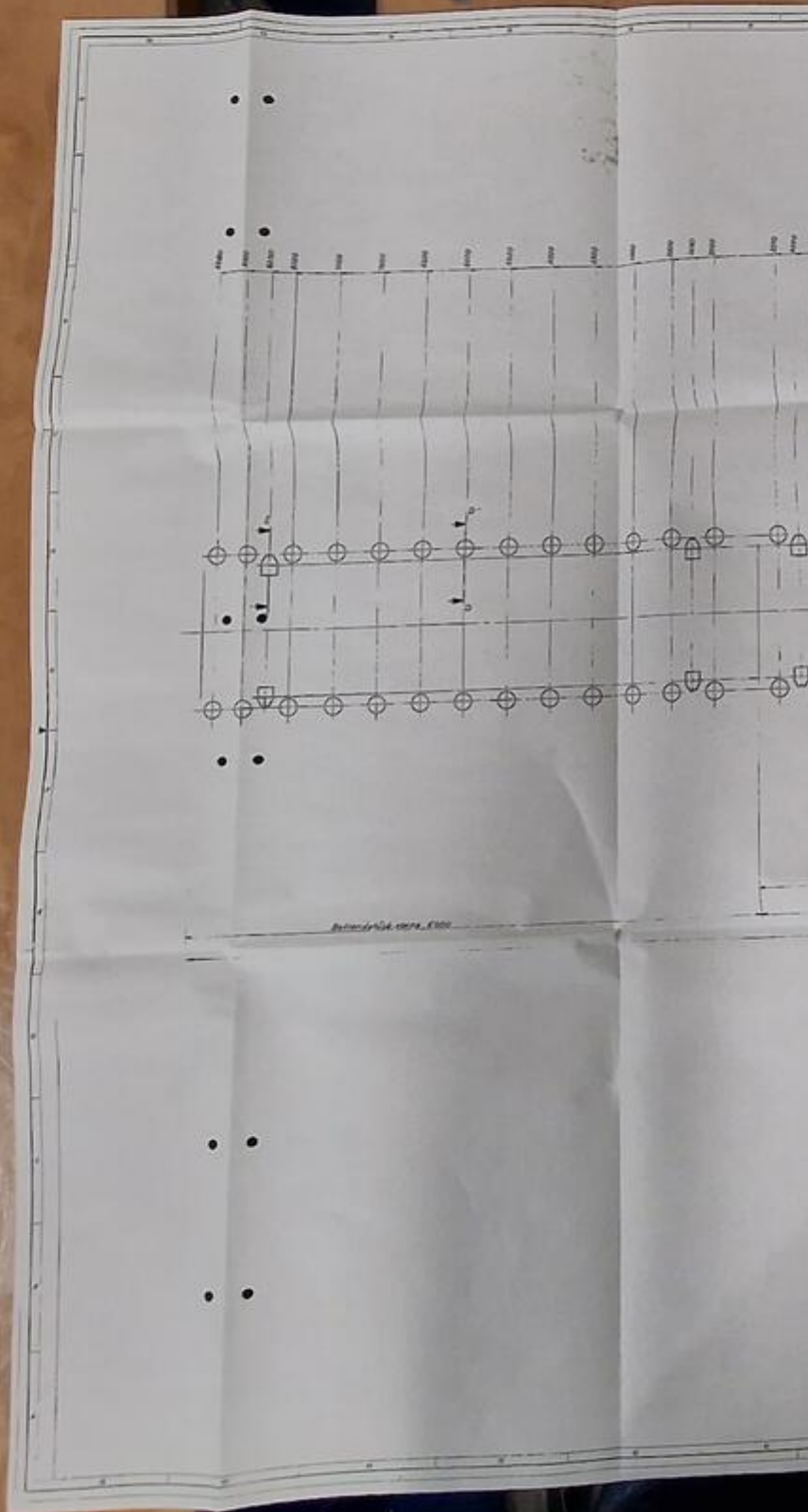












8850
8500
8250
8000
7500
7000
6500
6000
5500
5000
4500

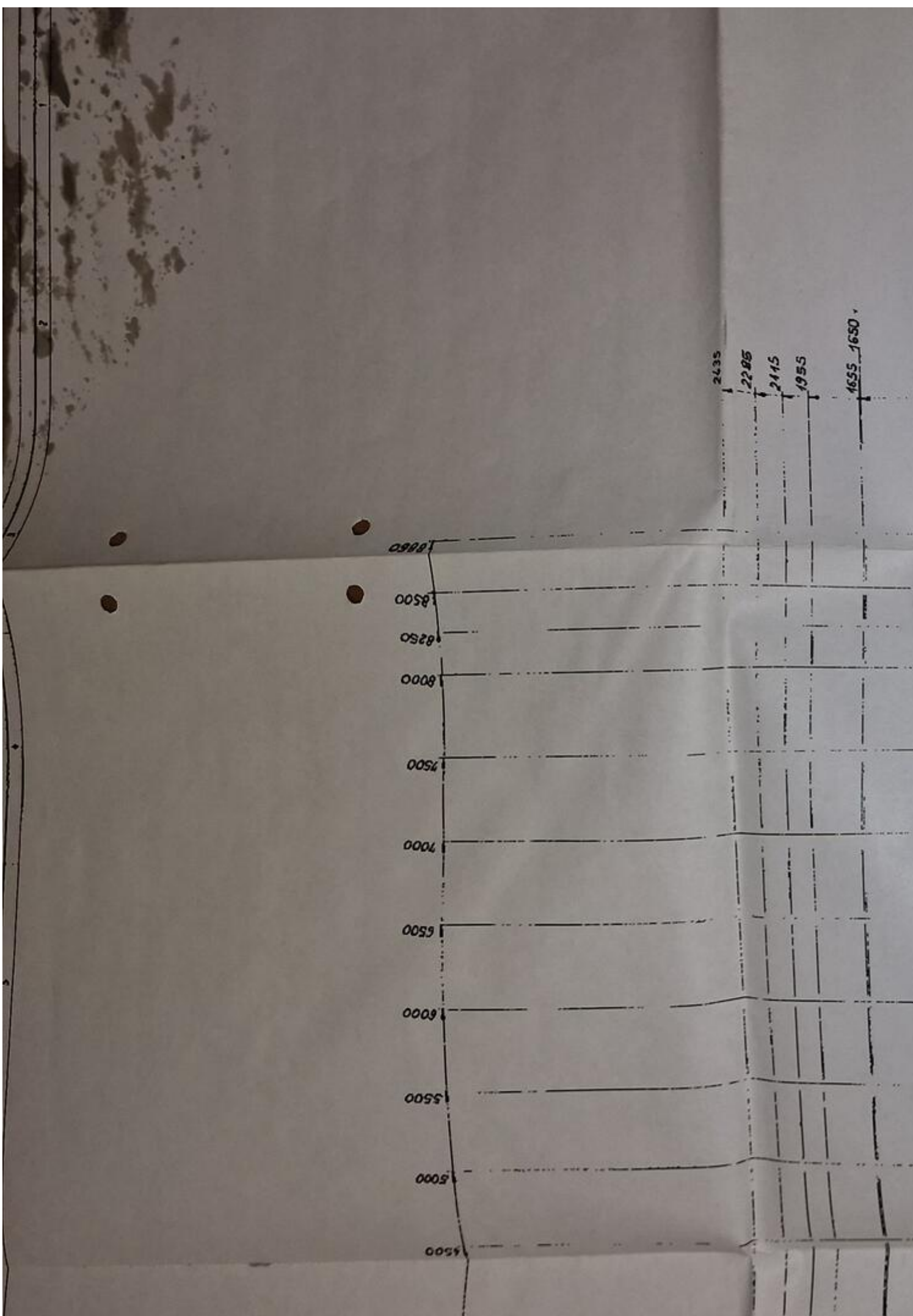
2435

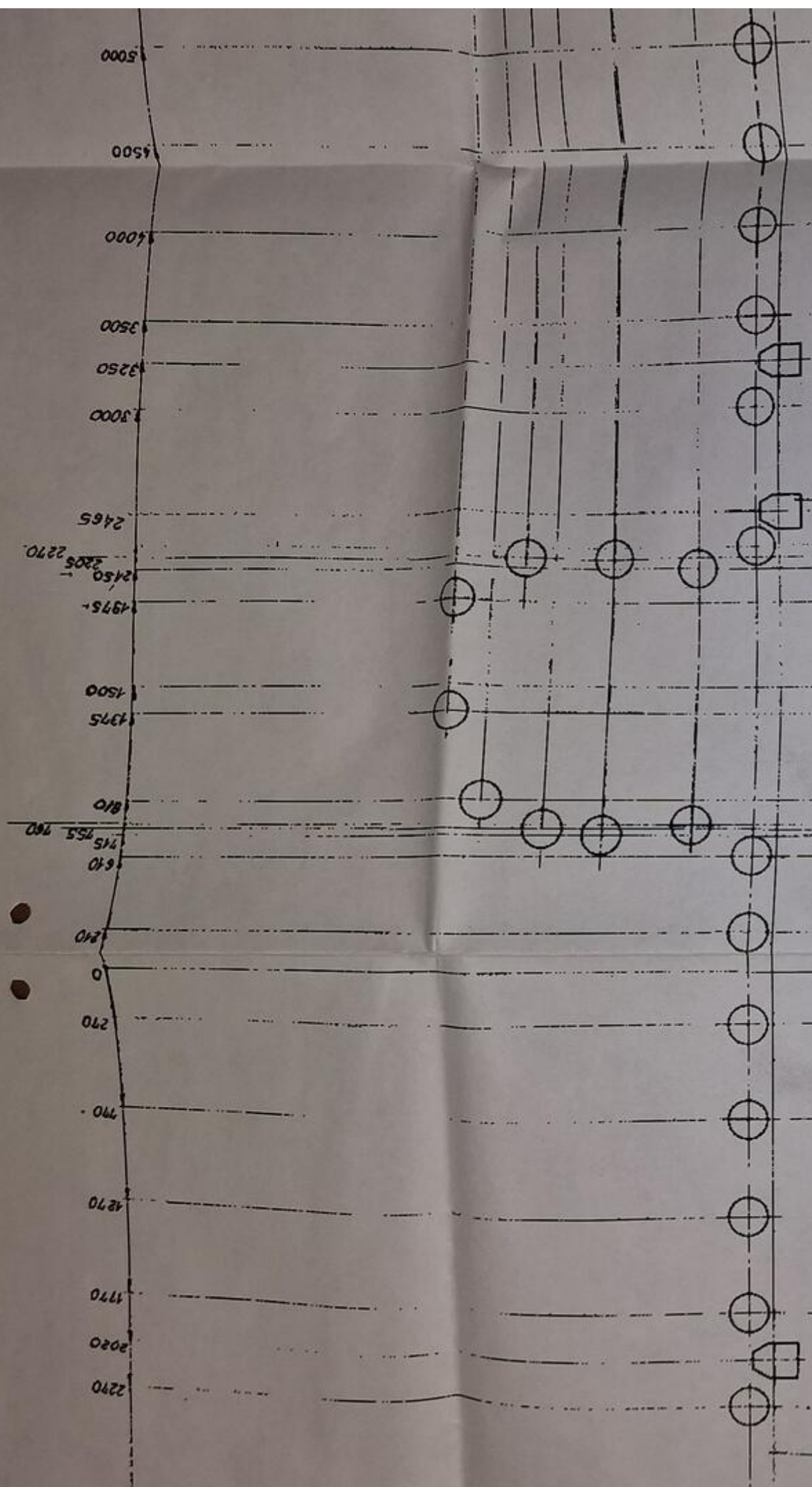
2285

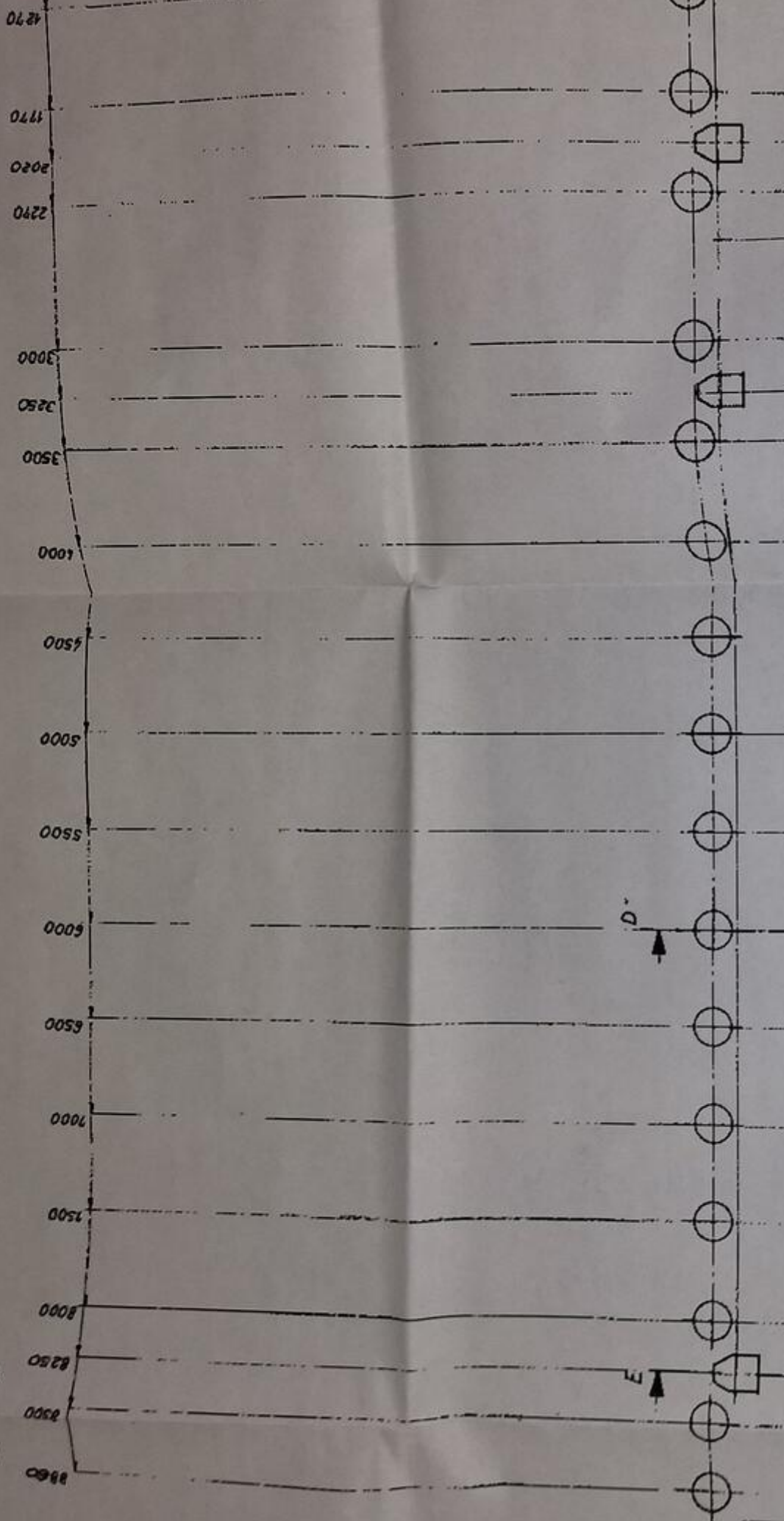
2115

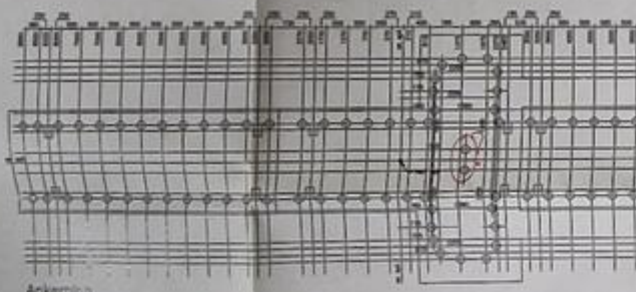
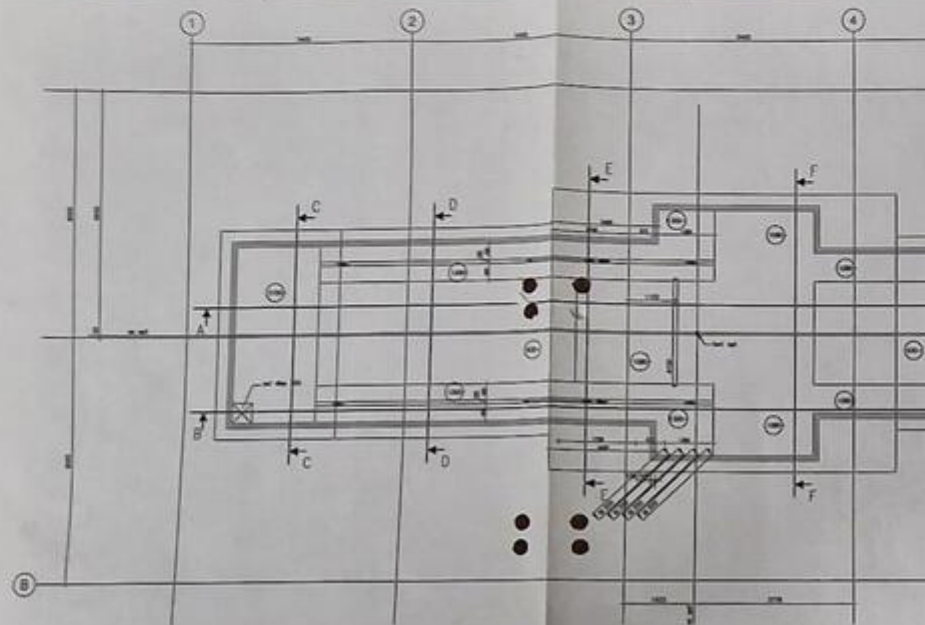
1955

1655 1680

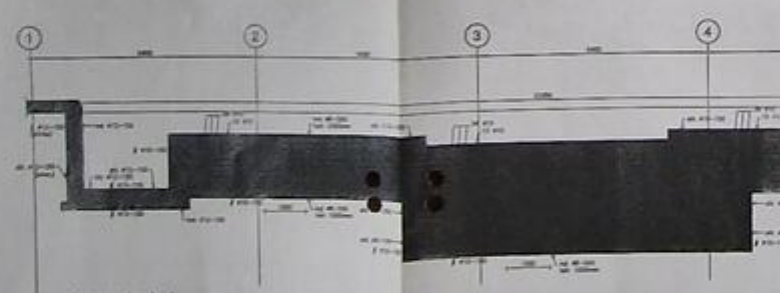




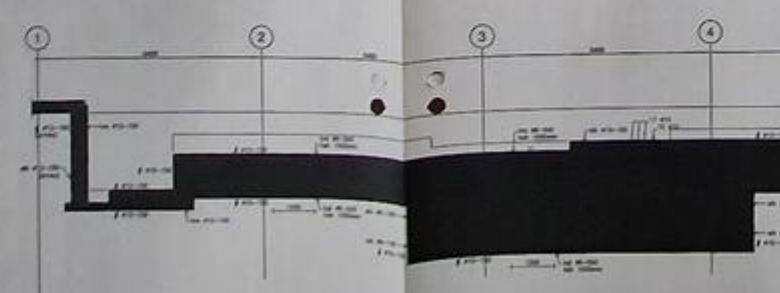




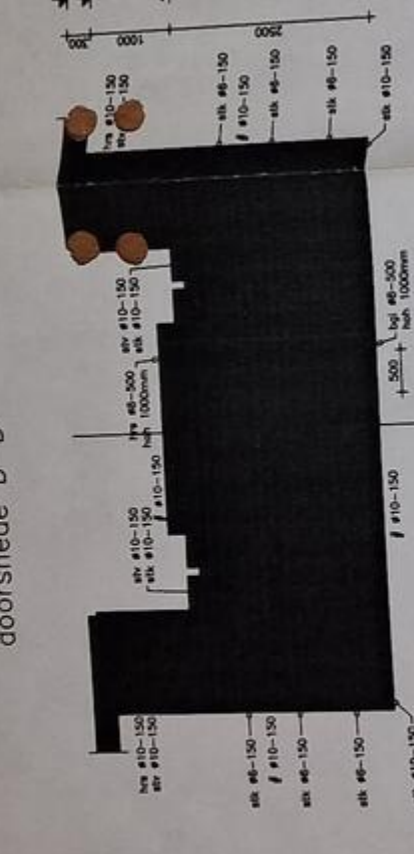
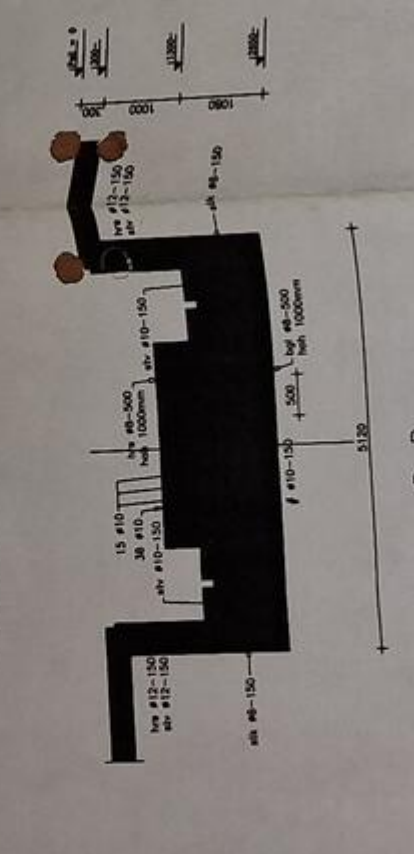
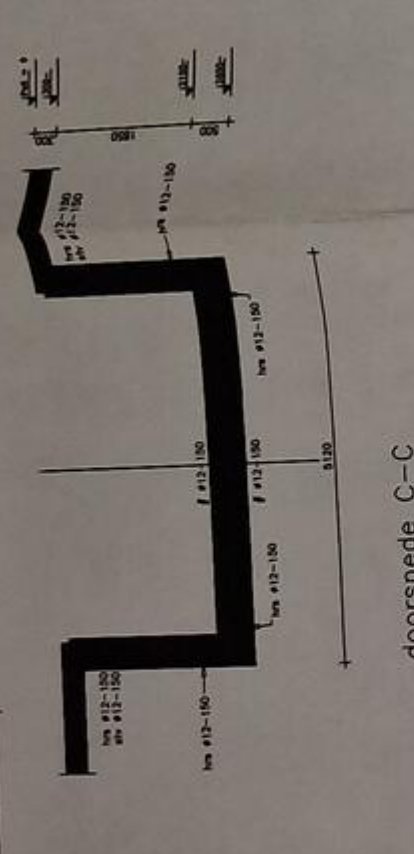
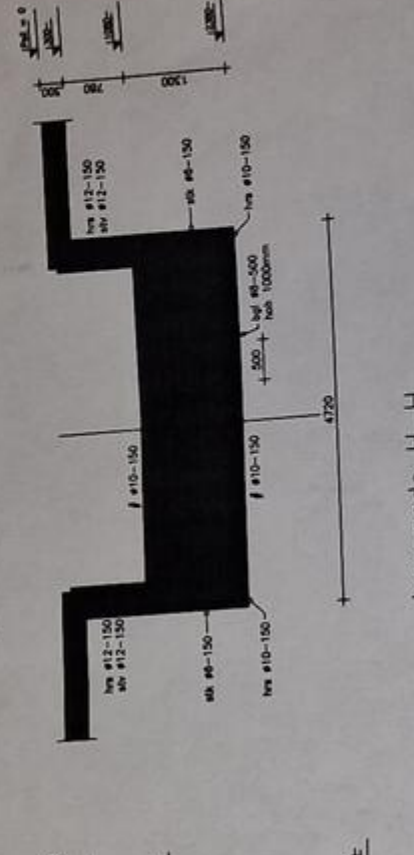
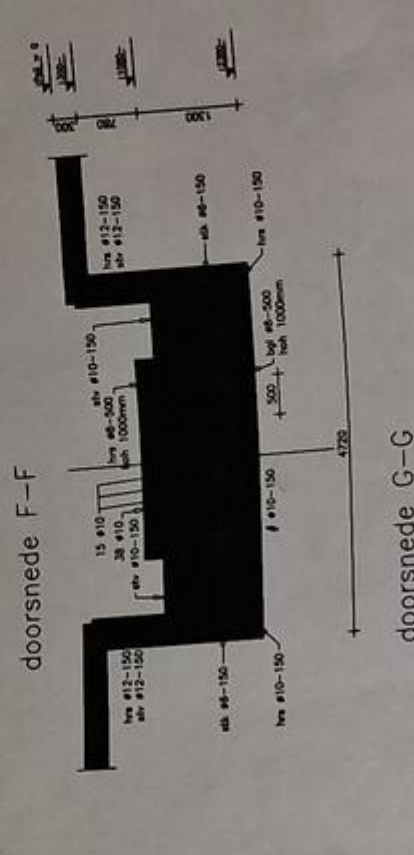
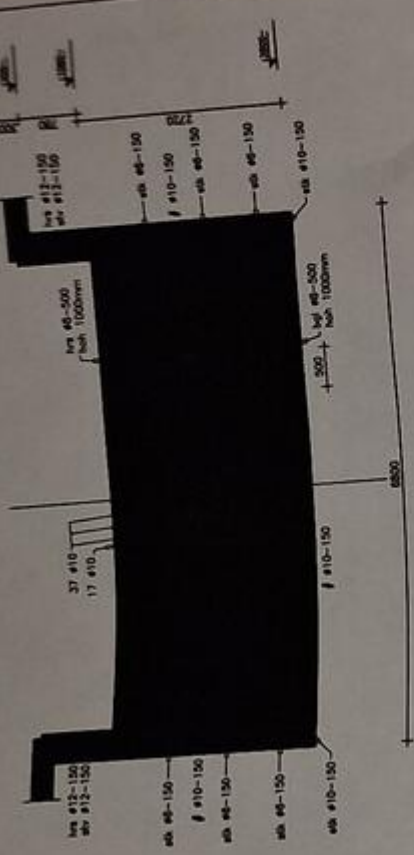
Ankerplan

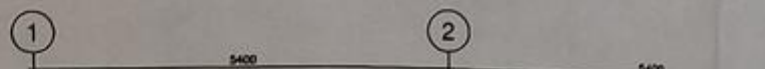
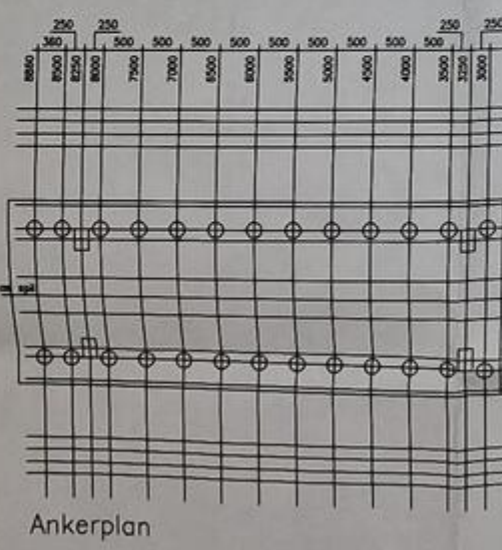
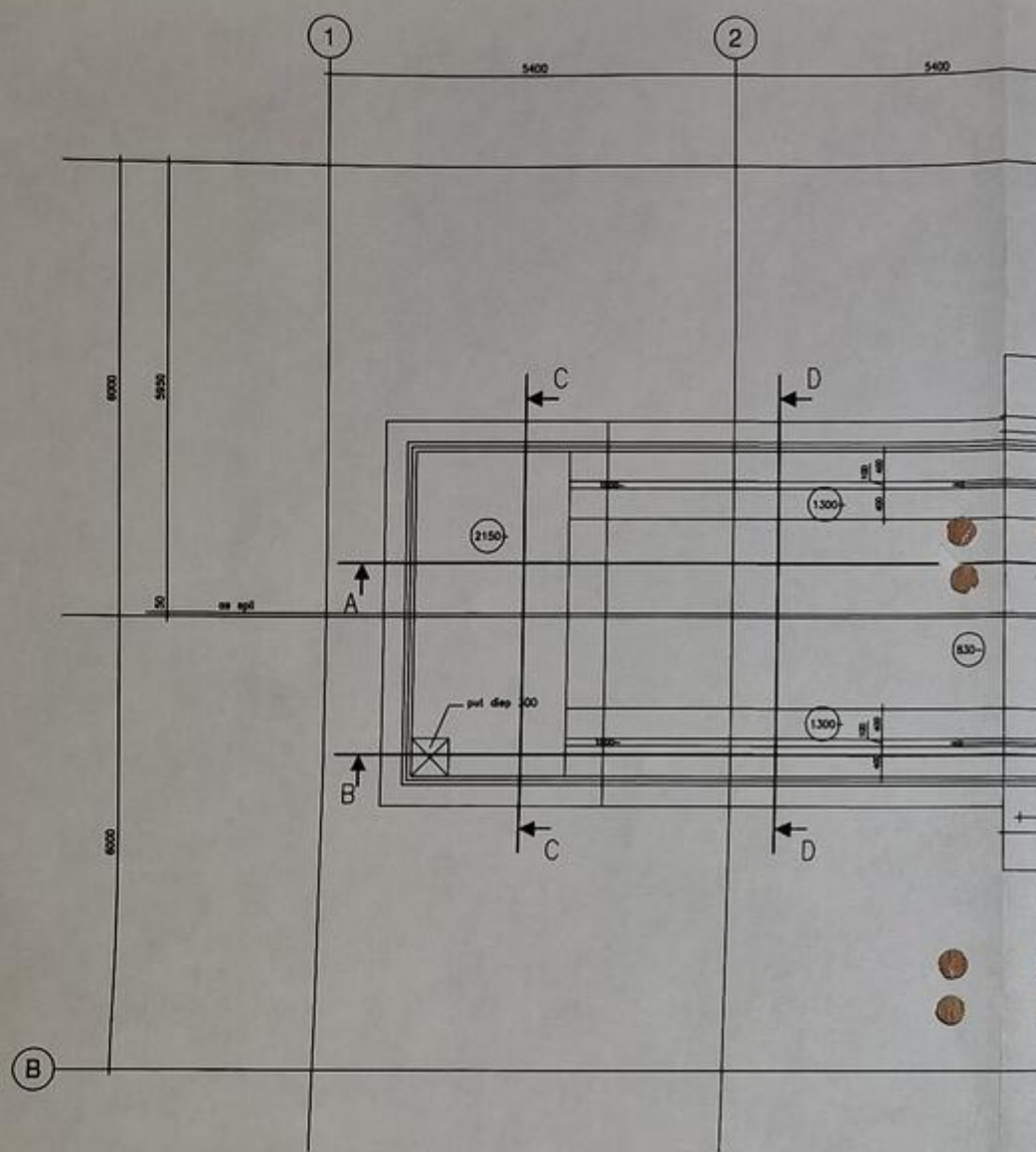


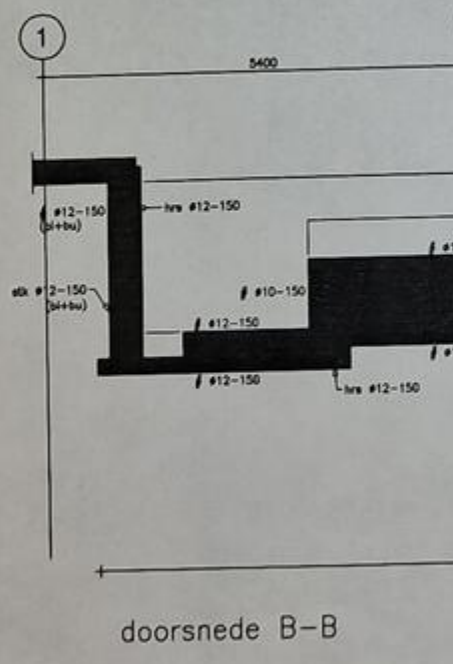
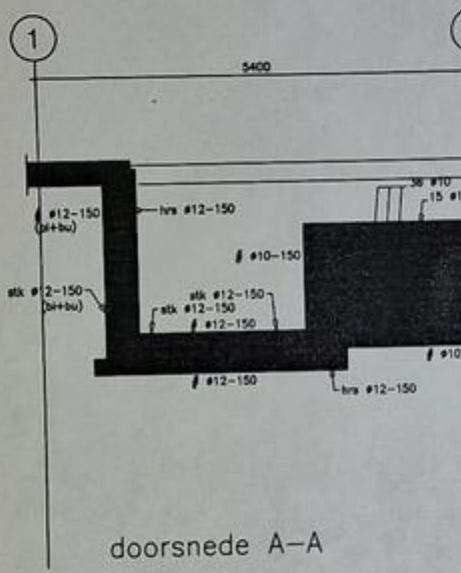
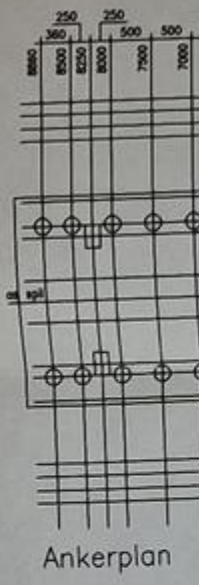
doorsnede A-A



doorsnede B-B









Video:



Asset-Trade

Assessment and Sale of Used Assets world wide

Am Sonnenhof 16

47800 Krefeld

Germany

Tel.: +49 2151 32500 33

Fax.: +49 2151 65 29 22

Email: info@asset-trade.de

Web.: <https://mail.asset-trade.de/en>

Ref. No.:
1426-06271247

Overview and Technical Data:

WALDRICH POREBA PF-S-75 Portal Milling Machine 8.4m with Siemens

WALDRICH COBURG

A large, stylized logo for WALDRICH COBURG. The word "WALDRICH" is written in a bold, white, sans-serif font, set against a dark blue background. The letters are slightly shadowed, giving a 3D effect. The logo is contained within a rounded rectangular frame with a thick blue border and a white inner border.

Year of Build:
Jan 1974
Rebuild year:
Jan 2006

Description:

Used WALDRICH SIEGEN / POREBA PF S 75 8.4m Portal Milling Machine

Retrofitted with New Siemens 840D CNC Controls

Technical Data:

- Table length: 8400mm x 2400mm
- Distance between Columns: 2.350 mm
- Table Weight: max. 35 tons
- Axis
 - X-Axis 8400mm - max travels 3.2 metres per minute
 - Y-Axis: 3000mm - max travels 2.5 metres per minute
 - W-Axis: 2500mm - max travels 2.5 metres per minute
 - Z-Axis: quill extension: 500 mm - max travels 0.5 metres per minute length
- Spindle: 600 rpm
- Tool Holder: SK 60
- Square Head can be fitted under Quill:
 - Max Length 800 mm
 - Extension : 250 mm
- With many spare parts
- With Tool setter Gildemeister

Still in Operation !!!

Further Data on request.

Technical Data:

Technical Data:

Control:

[SINUMERIK 840D](#)

Spindle Speed:

600 rpm

Tool Holder:

[SK 60](#)

Travels:

X-Axis:

8.400 mm

Y-Axis:

3.000mm

Z-Axis:

500 mm

Buyer Information:

Condition:

[Very good condition](#)

Availability:

[Sold](#)

Sold as:

[EXW \(Ex Works - Incoterm\)](#)

VAT:

[21 %](#)

Buyers Premium:

[18 %](#)

Location:

Netherlands

Images:



WALDRICH
SIEGEN

PROBAB

Waldrich Siegen
1970

Waldrich Siegen
1970





 **KONECRANES**

JCS316 **20.0t**

WALDRICH
SIEDEN
POREBA





WALDRICH
SIEGEN
POREBA

007 700 250 000
HALLE 17
1
1000963548

27/3'23

11580





SPILBELASTING

SIEMENS

SINUMERIK

Machine CHAN1 JOG SYF DIR OSTORE1.SYF

Kanaal onderbroken Programma geannuleerd

Stop: geen BAG - Ready

3000 Noodstop

TCS	Positie	Repos-versch	Masterspil	S1
X	3272.000 mm	0.000	Act.	0 elmin
Y	1638.947 mm	0.000	Ing.	0 elmin
W	1895.790 mm	0.000	Pos.	0 grd
Z	115.626 mm	0.000	Vermogen	105.0 %

G500

Voeding [mm/min]

Act. 0.000 0.0 %

Ing. 0.000

Geredschap

Geledeerd geredschap

G01 G40

Handberei. P/C

Act. wdr. instellen Toucheren

SIEMENS

Q W E R T Y U I O P

A S D F G H J K L

Z X C V B N M

Ctrl Alt

SIEMENS

SIEMENS

KLEMMEN

LOESSEN

OVERBRUGGING

ZAS

GEREDSCHAAP

GEREDSCHAAP KLEMMEN

SIEMENS





CRANE

Technical specifications label with fields for Name, Type, No., and Date.

715



ELADT

Castrol









FEESTORGEN 2020

STORCK

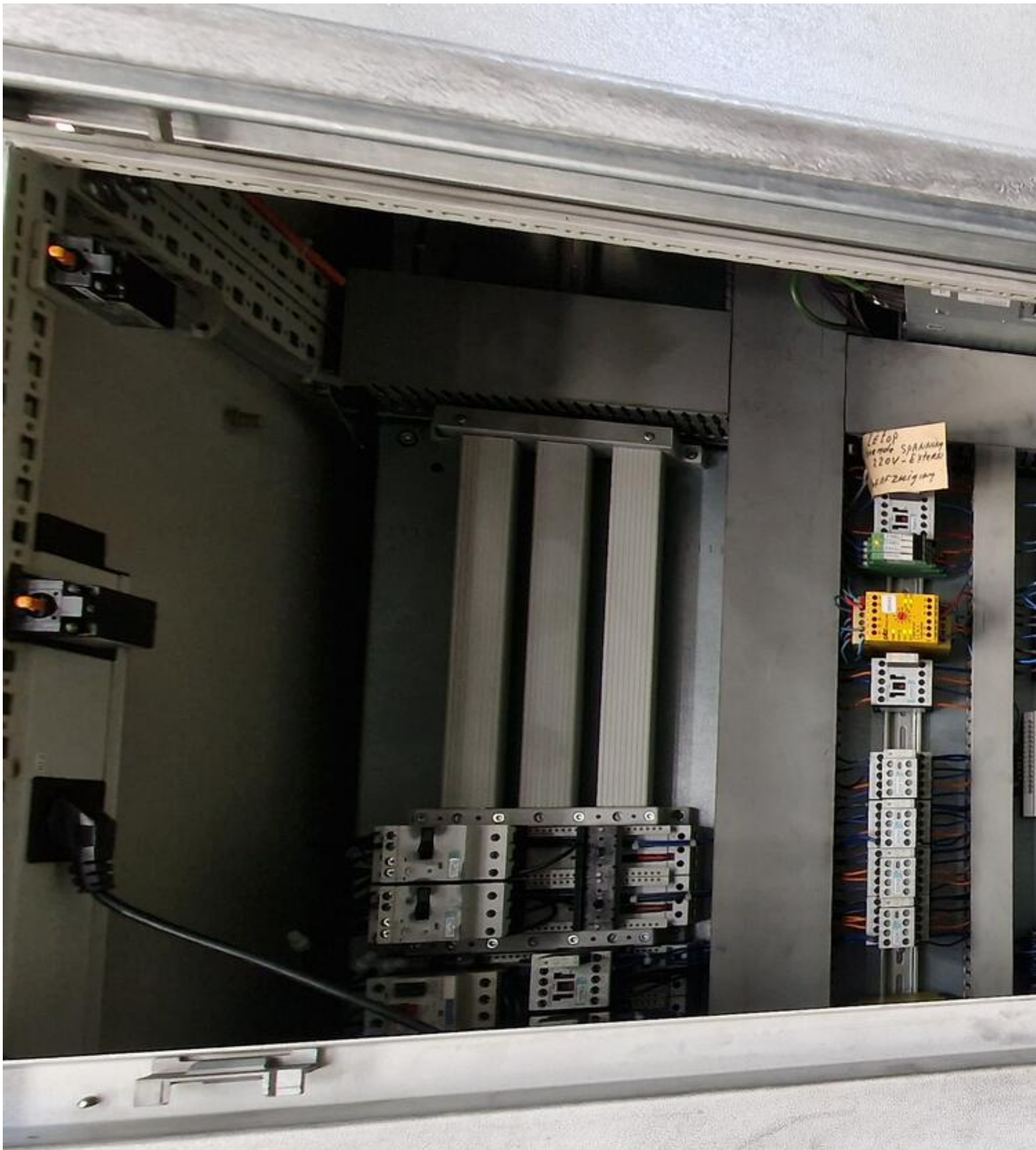
STORCK



220
1000
001







1.6.10p
120V - External
120V Zmignij



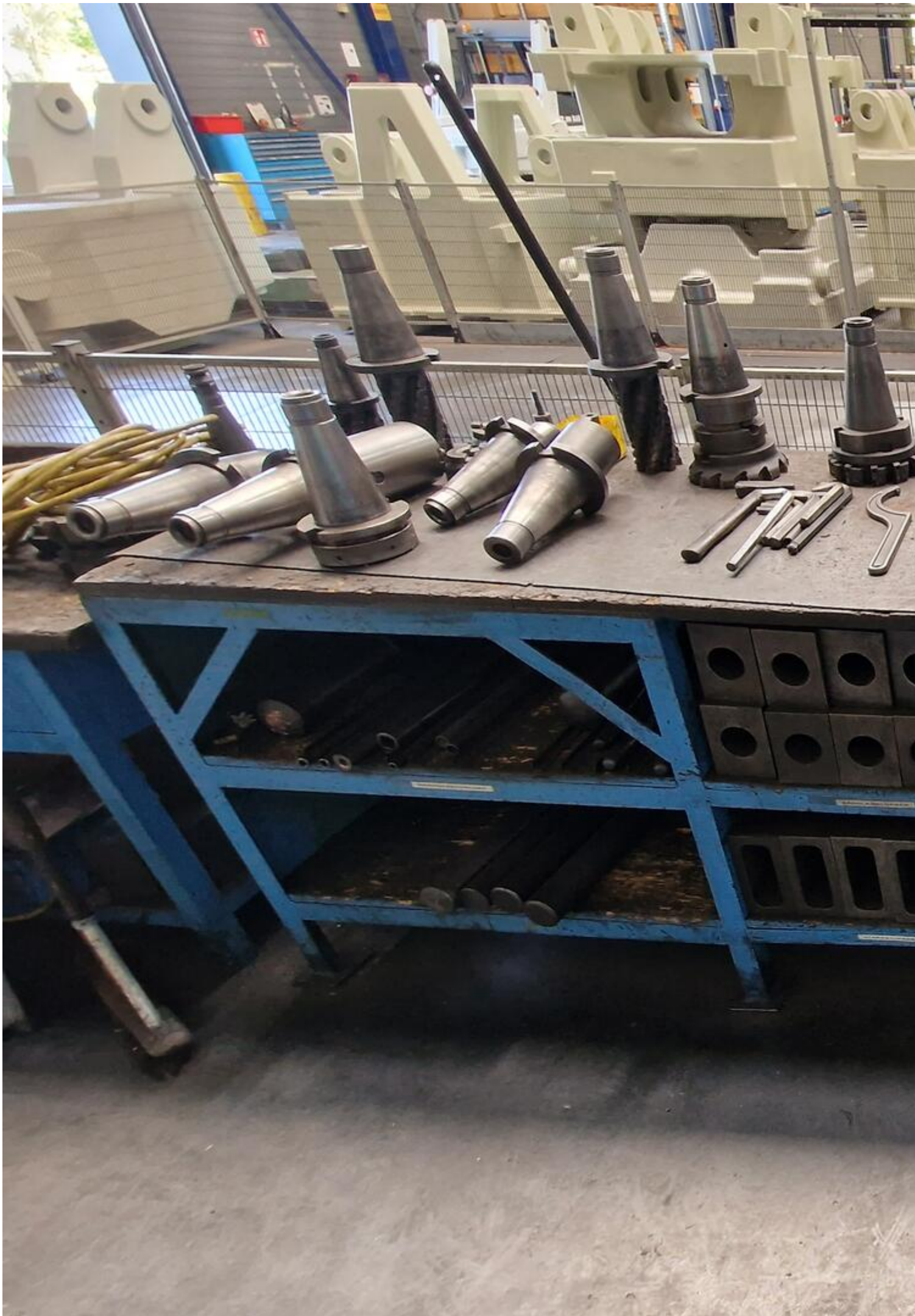














B





SPIELBELASTING

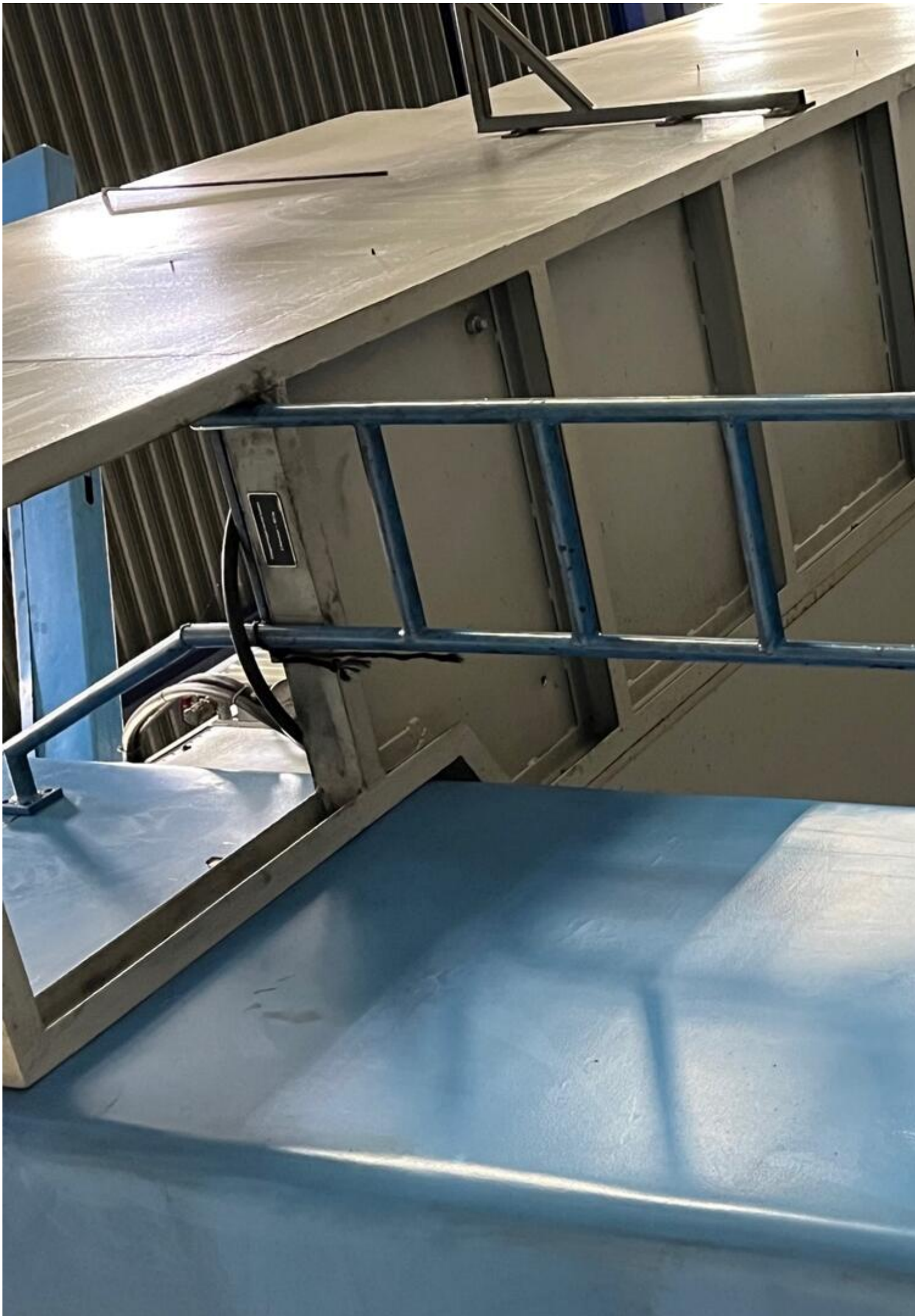


KLEMMEN
GEREEDSCHAP KLEMMING
LOSSEN
GEREEDSCHAPWISSEL
OVERBRUGGING
ZAS
VRUGA
GEREEDSCHAPWISSEL



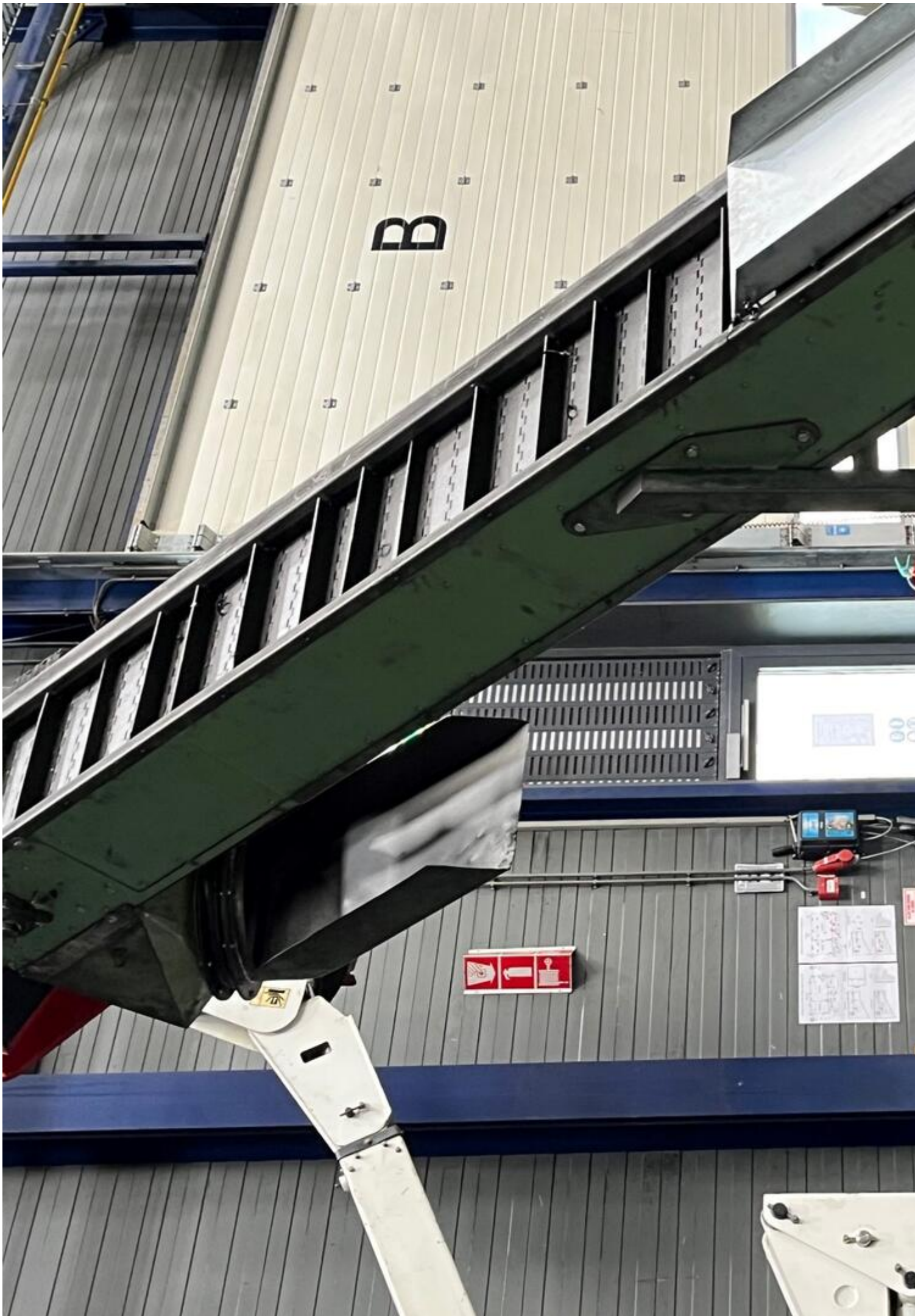






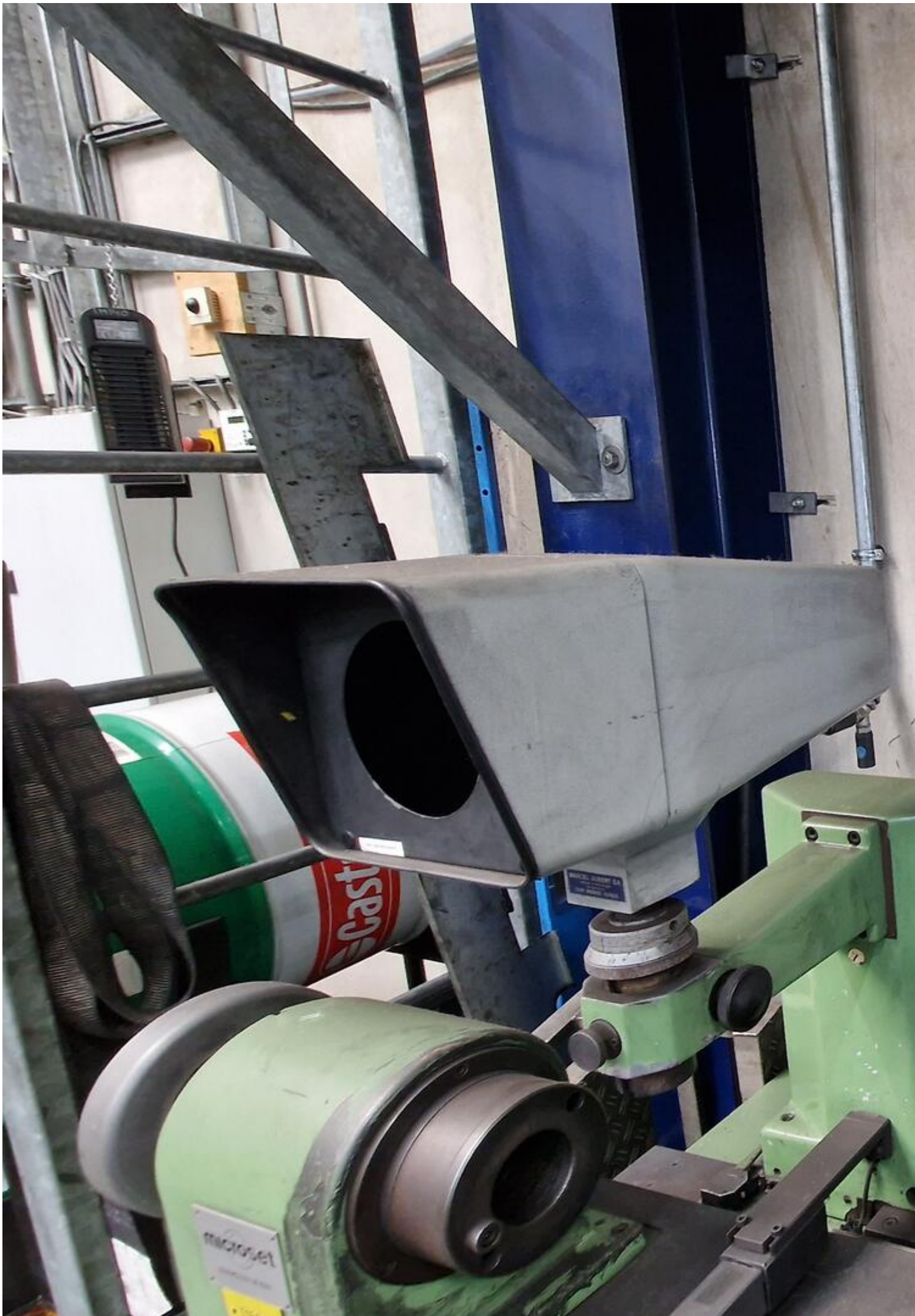


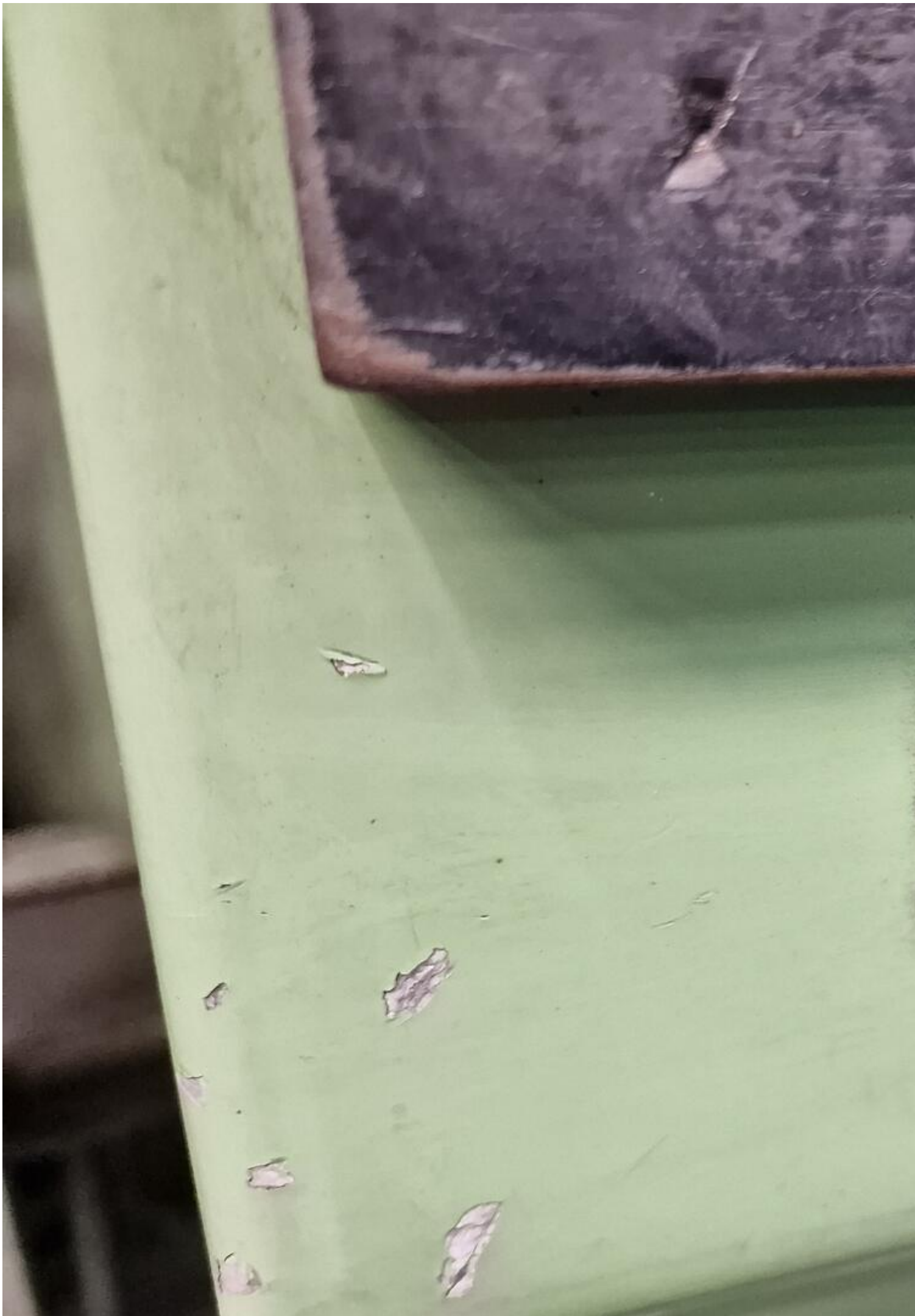






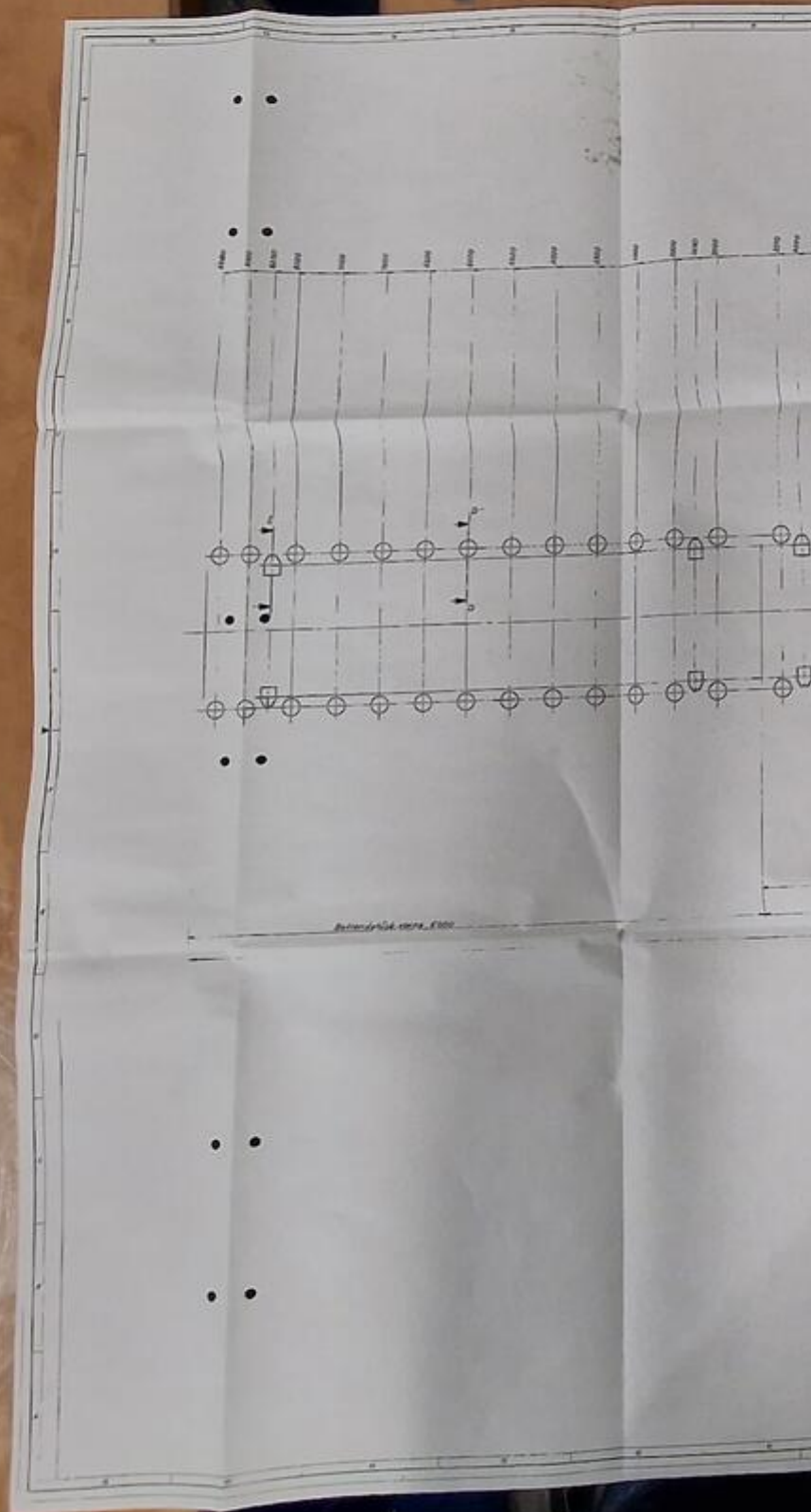












8850
8500
8250
8000
7500
7000
6500
6000
5500
5000
4500

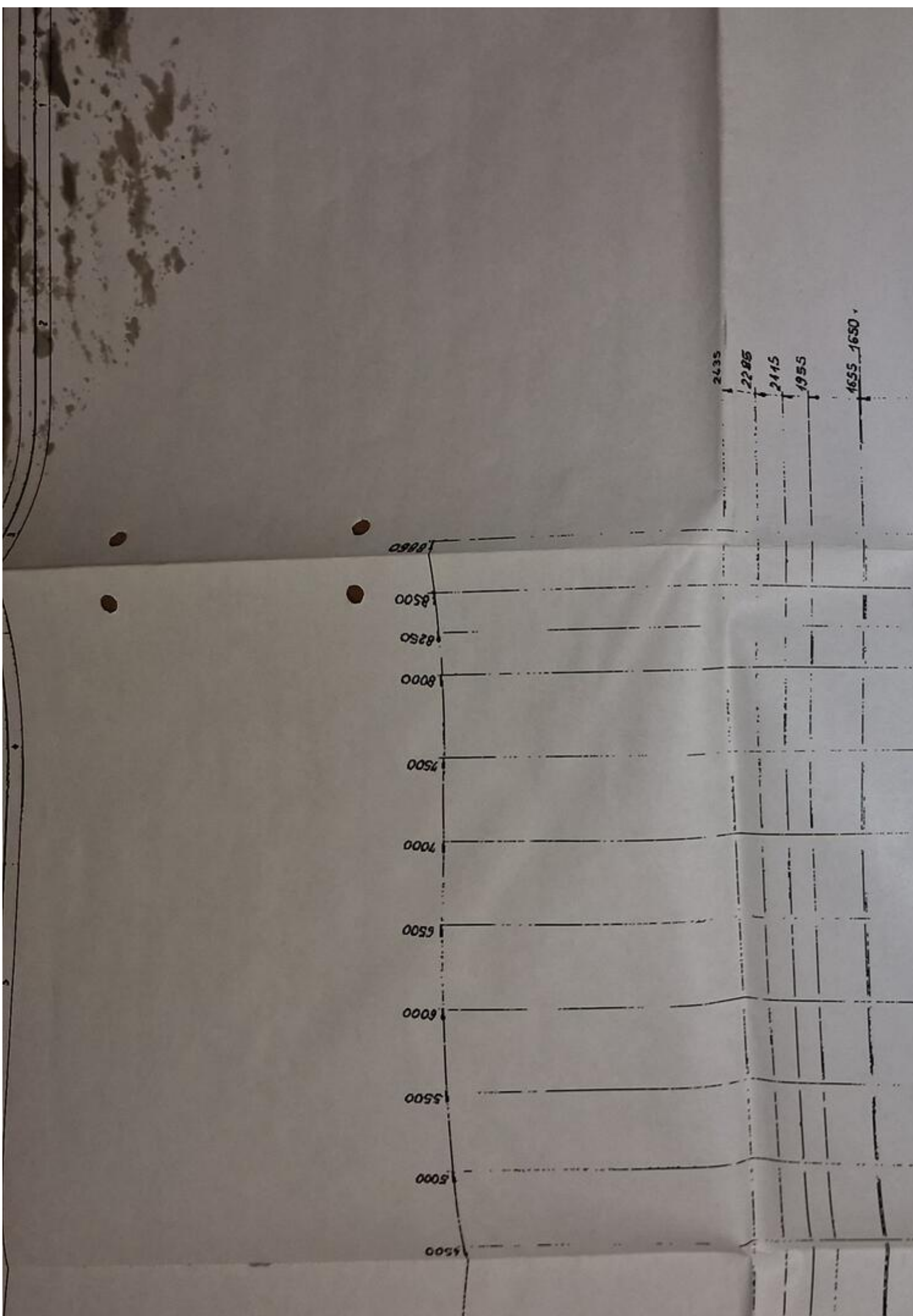
2435

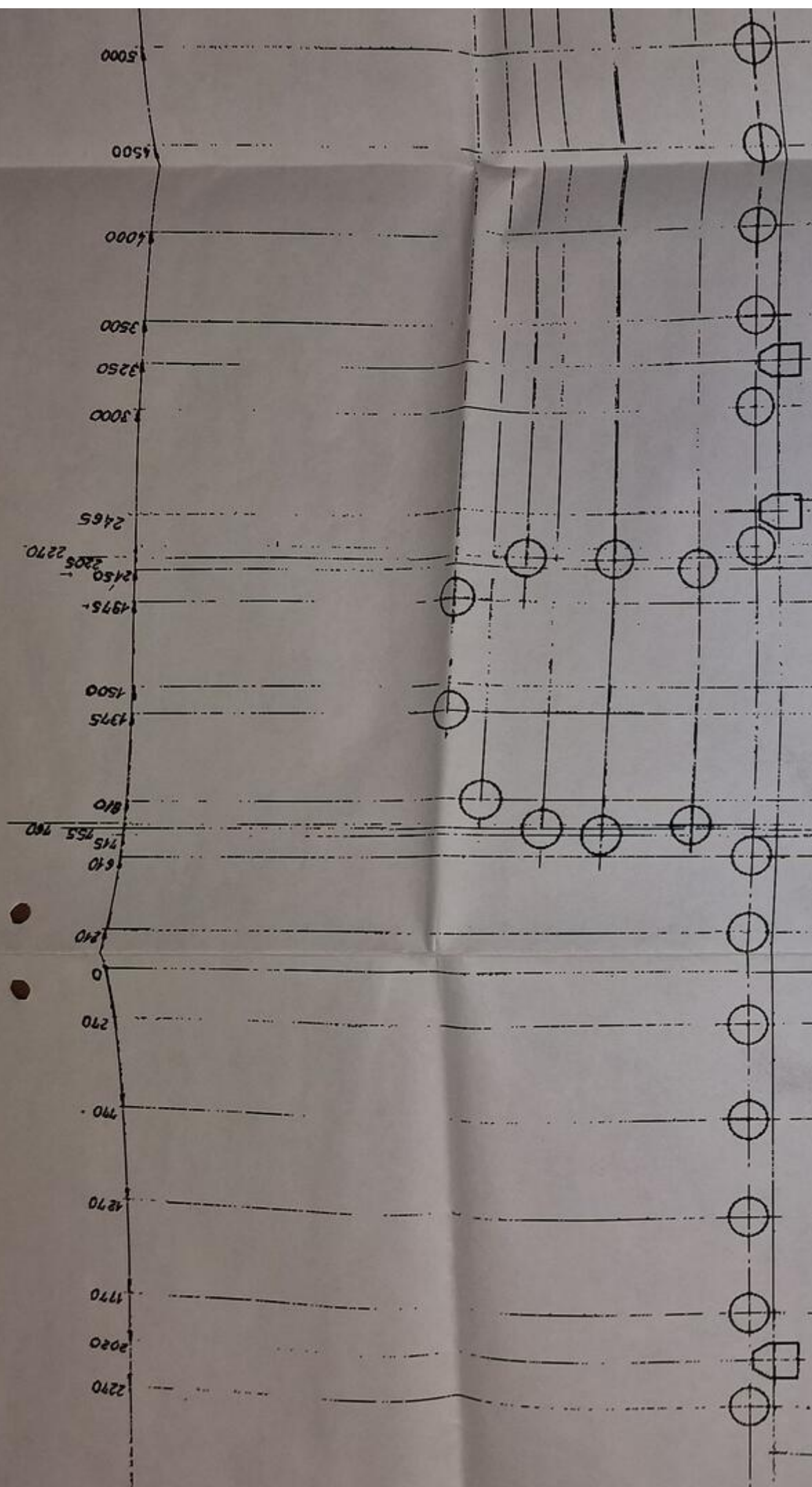
2285

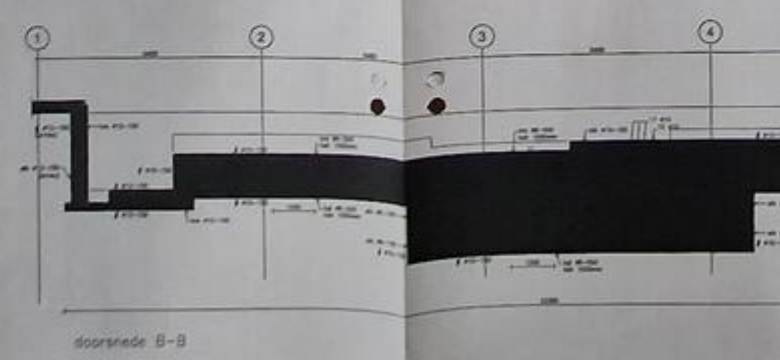
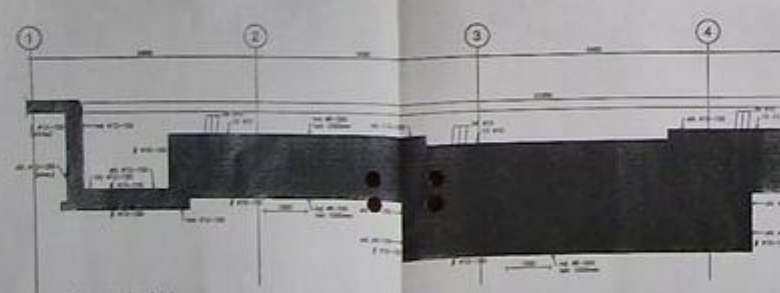
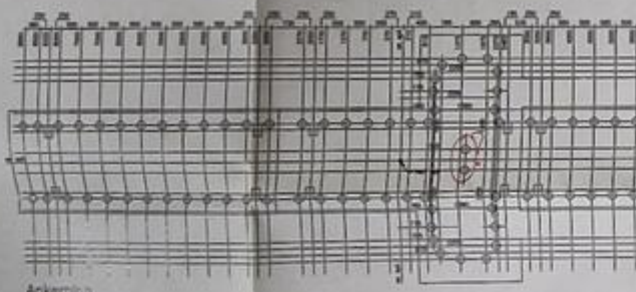
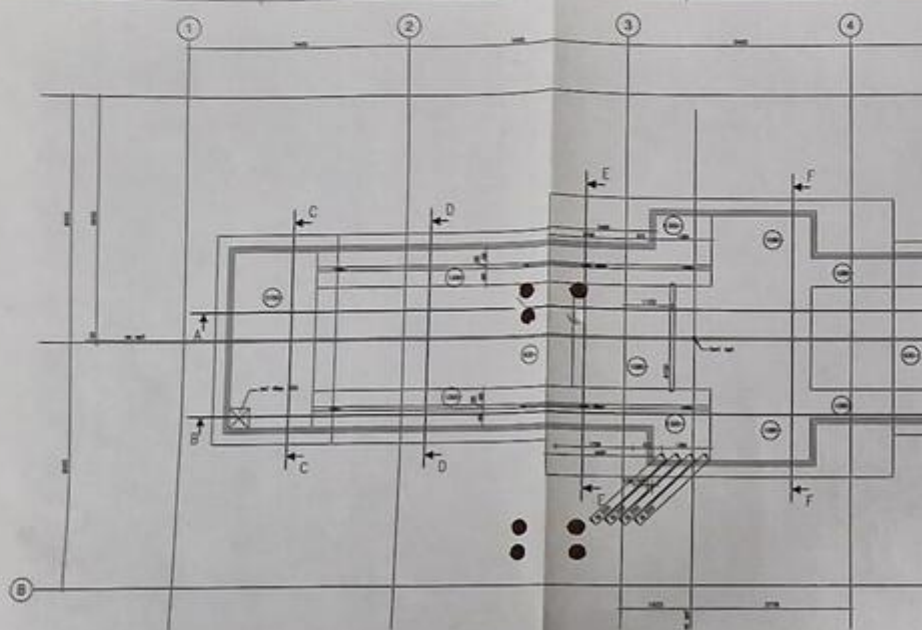
2115

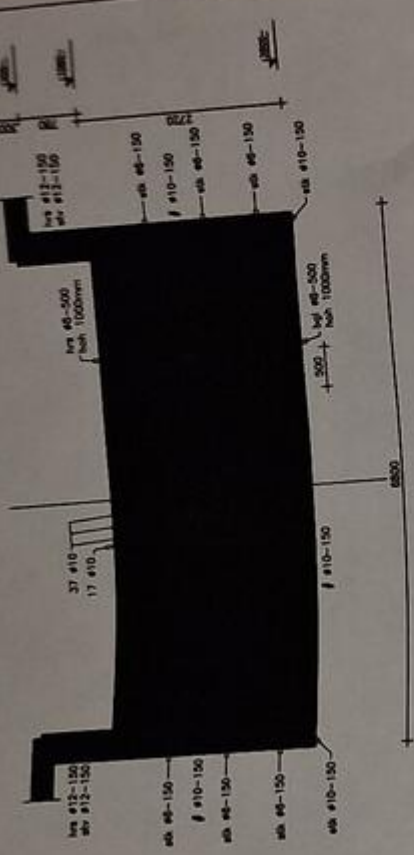
1955

1655 1680

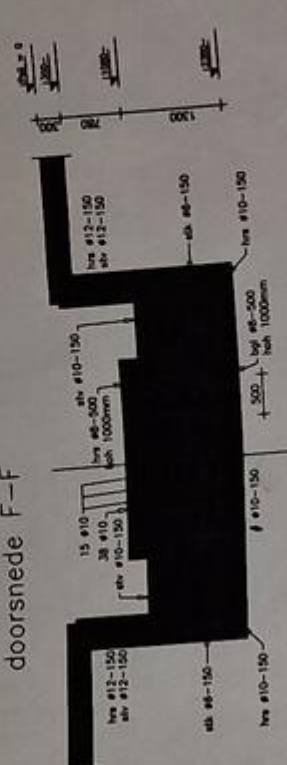




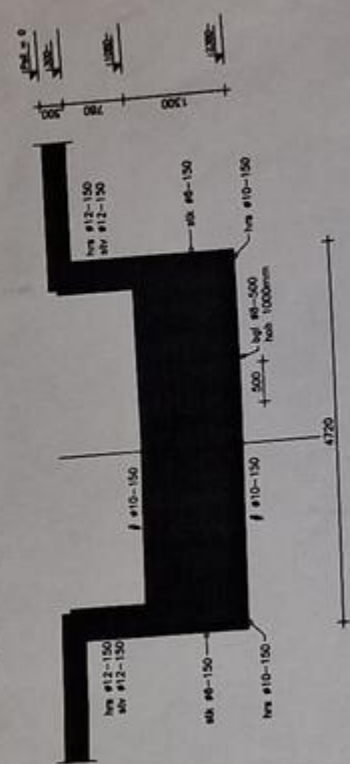




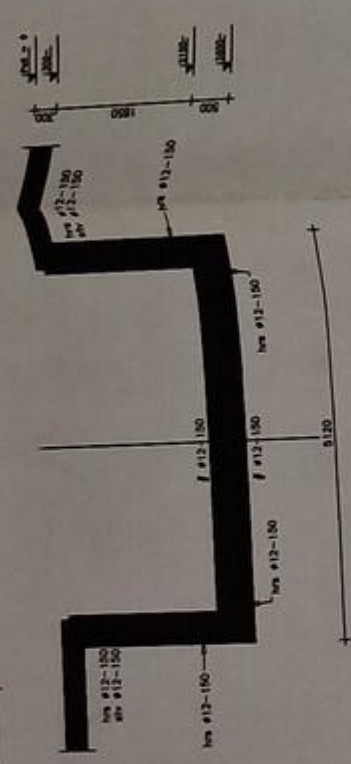
doorsnede F-F



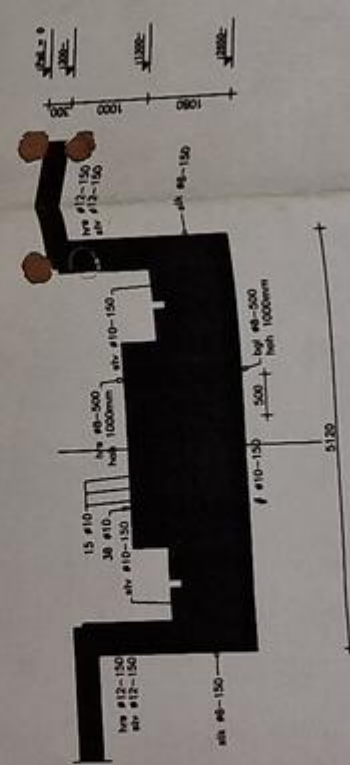
doorsnede G-G



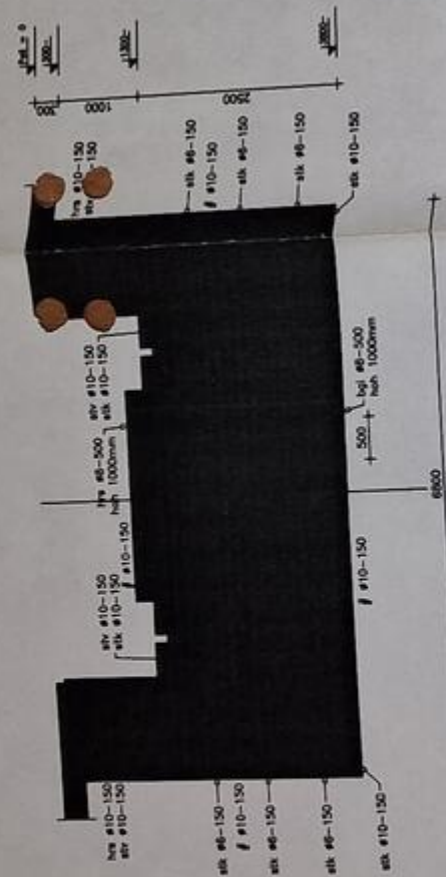
doorsnede H-H

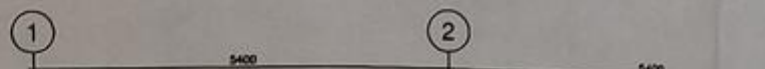
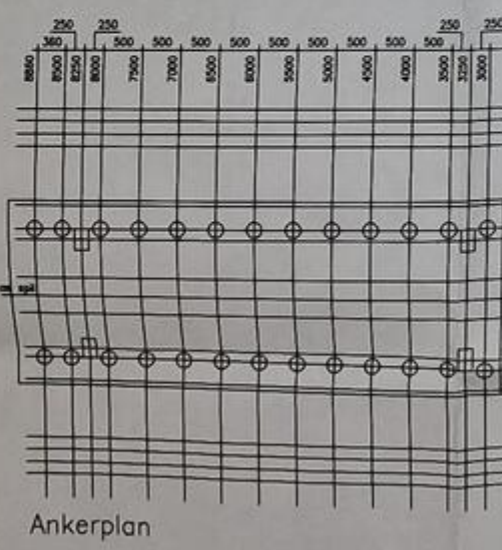
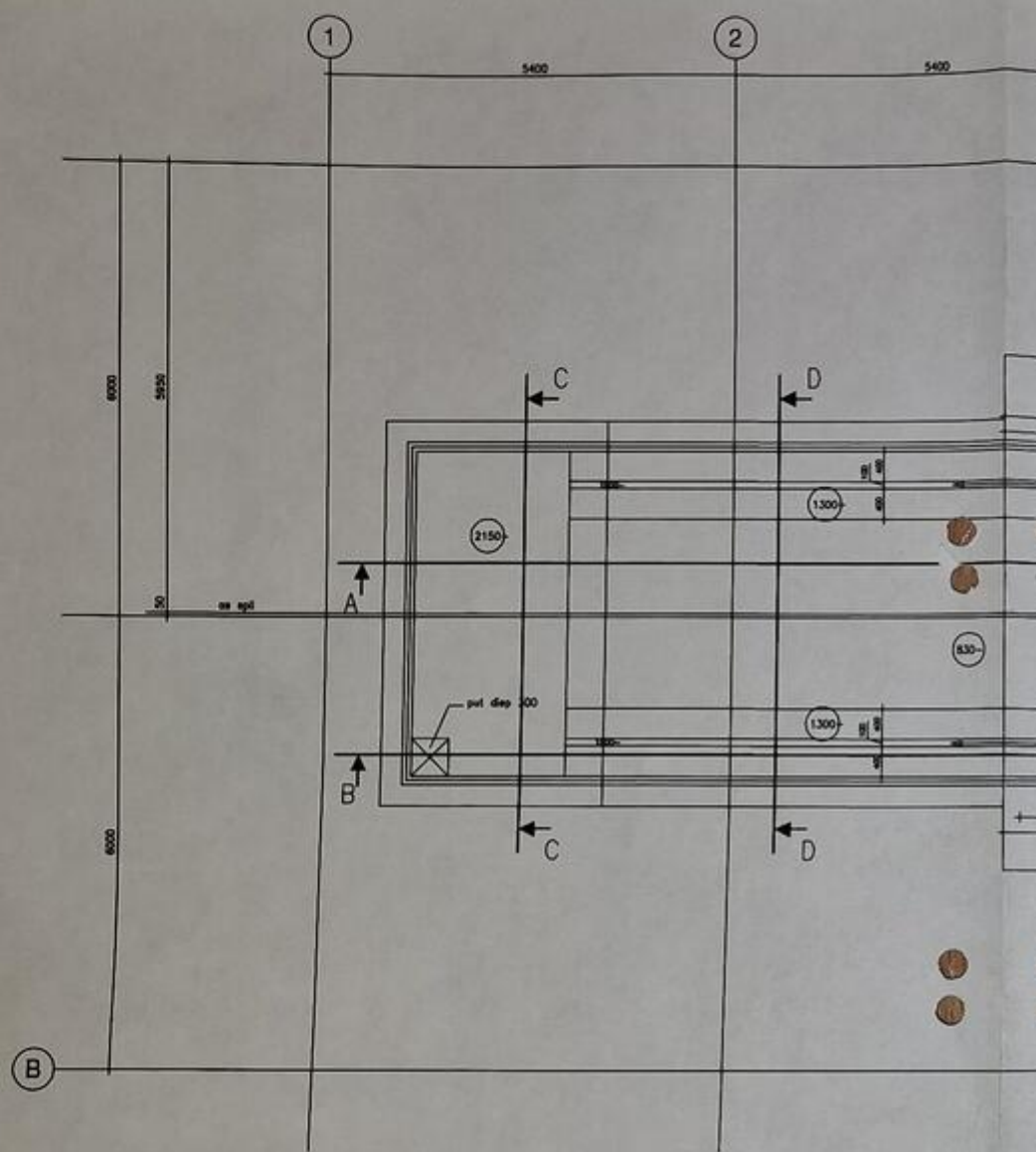


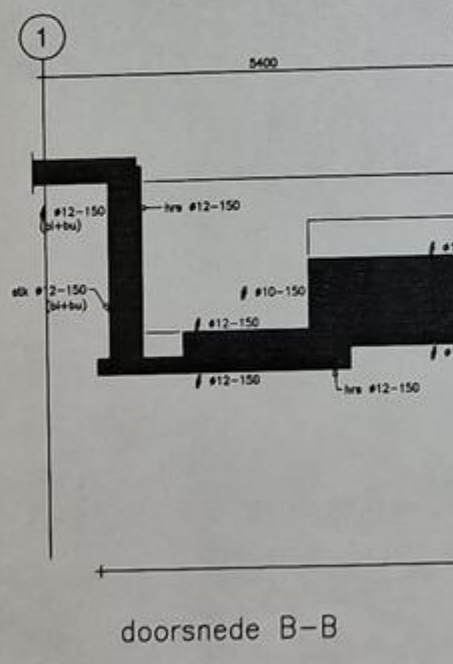
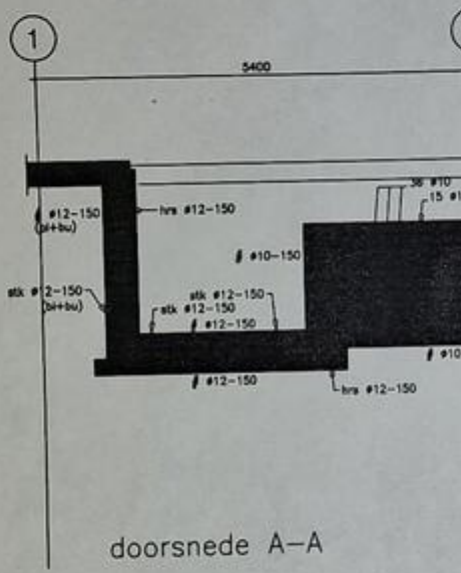
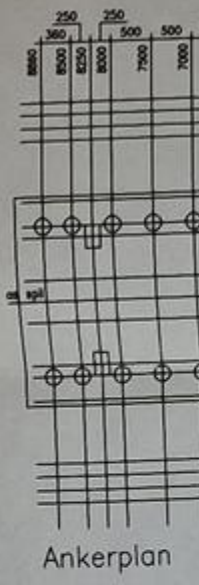
doorsnede C-C



doorsnede D-D









Video:



Asset-Trade

Assessment and Sale of Used Assets world wide

Am Sonnenhof 16

47800 Krefeld

Germany

Tel.: +49 2151 32500 33

Fax.: +49 2151 65 29 22

Email: info@asset-trade.de

Web.: <https://mail.asset-trade.de/en>

Generated on 04.04.2026

© Copyright 2026 - [Asset-Trade](#)

Page