

Image not found or type unknown



Ref. No.:

1423-06111025

## **Overview and Technical Data:**

# **AXA VHC-3-3000-S-50/E 5 Axis Machine Center**

[AXA](#)



Year of Build:  
May 2005

## Description:

# Used AXA VHC-3-3000-S-50/E - 5 Axis - Travelling column machining centre

CNC Controls: Siemens 840 with Shopmill

## Technical Data:

- Travels:
    - X-Axis: 2940 mm
    - Y-Axis: 700 mm
    - Z-Axis: 850 mm
    - B-Axis: Swivel Head +/-100°
    - C-Axis: NC Roundtable: D800mm x 0,001°, endless
    - Max travels X/Y/Z: 40/40/30 m/min
  - Table:
    - Table size: 3340 x 750 mm
    - Max Table Load: 1200 kg/m<sup>3</sup>
  - CNC rotary table type RTA 3-630
    - face plate can be used vertically/horizontally Diameter: 630 mm
    - center height: 330 mm
    - max. load vertical/horizontal: 1500 / 500 kg
    - rapid traverse speed 8 l/min. and continuous speed 2 l/min.
  - Toolholder: 26x SK 50 DIN69871A
  - Tools Change time: 6 Sec
  - Spindel: 30-4.000 U/Min/45KW
  - IKZ: 10 bar
  - Chip Conveyor
  - Power: 3 x 400/230V /PE; 50 Hz(+ I 0%/- 5%), 60 KVA
- 

The tilting spindle is the core element of our VHC machine series - maximize your possibilities by machining workpieces from almost any position. The fixed machine tables and stationary positioned tool magazine pool ensure that only the travelling column is in motion. A strong drive motor cater for the very dynamic performance

## Technical Data:

### Technical Data:

Control:

[SINUMERIK 840D](#)

Machine Hours:

78.300 hrs.

Spindle Speed:

4.000 rpm

Tool Holder:

[SK50](#)

Tool Capacity:  
26 x

## **Travels:**

X-Axis:  
2.940 mm  
Y-Axis:  
700mm  
Z-Axis:  
850 mm

## **Dimensions and Weight:**

Height:  
3.150 mm  
Width:  
3.350 mm  
Length:  
8.600 mm  
Weight:  
23.000 kg

## **Buyer Information:**

Condition:  
[Very good condition](#)  
Availability:  
[Sold](#)  
Sold as:  
[Free Loaded on Truck \(LOT\)](#)  
VAT:  
[19 %](#)  
Location:  
Germany

## **Images:**



1



2



3

SIEMENS

POWER TEMP

SINUMERIK

**7018244** Magazinachse stoppen UI

**AUTO** /\_N\_MKS\_DIR/\_N\_NEUE\_ELDAN\_566363\_REV

**Aktiv** SPANNUNG\_1\_REV81

Achsfreigabe fehlt

NKS	Position [mm]	Restveg	T, F, S	G-Funktion
X1	1207.389	0.000	T GUTSCHLICHTER	Hilfs-Funktion
Y1	482.854	0.000	F EILG.	Alle G-Funk.
Z1	568.780	280.220	S	
B1	72.576	0.000		
C1	0.222	0.000		
Nullpkt81				
<b>Aktueller Satz</b> SPANNUNG_2_REV81.MPF				
N1459 CYCLE832(0.01, 0) ↑				
N1460 M5 ↑				
N1461 M9 ↑				
N1462 CYCLE800(1, "VHC", 0, 27, 0, 0, 0, 0, 0, 0, 0, 0, 0, -1) ↑				
N1463 :-----↑				
N1464 : BREITE 61.5 einfahren ↑				
N1465 :-----↑				

1688. I 100%  
1888. I 100%

100% 200%

**Istwert MKS**

Prog. koerr. Mitzeich. DXA Satz-suchl. Prog. Beeinfl.





5



6











11



12

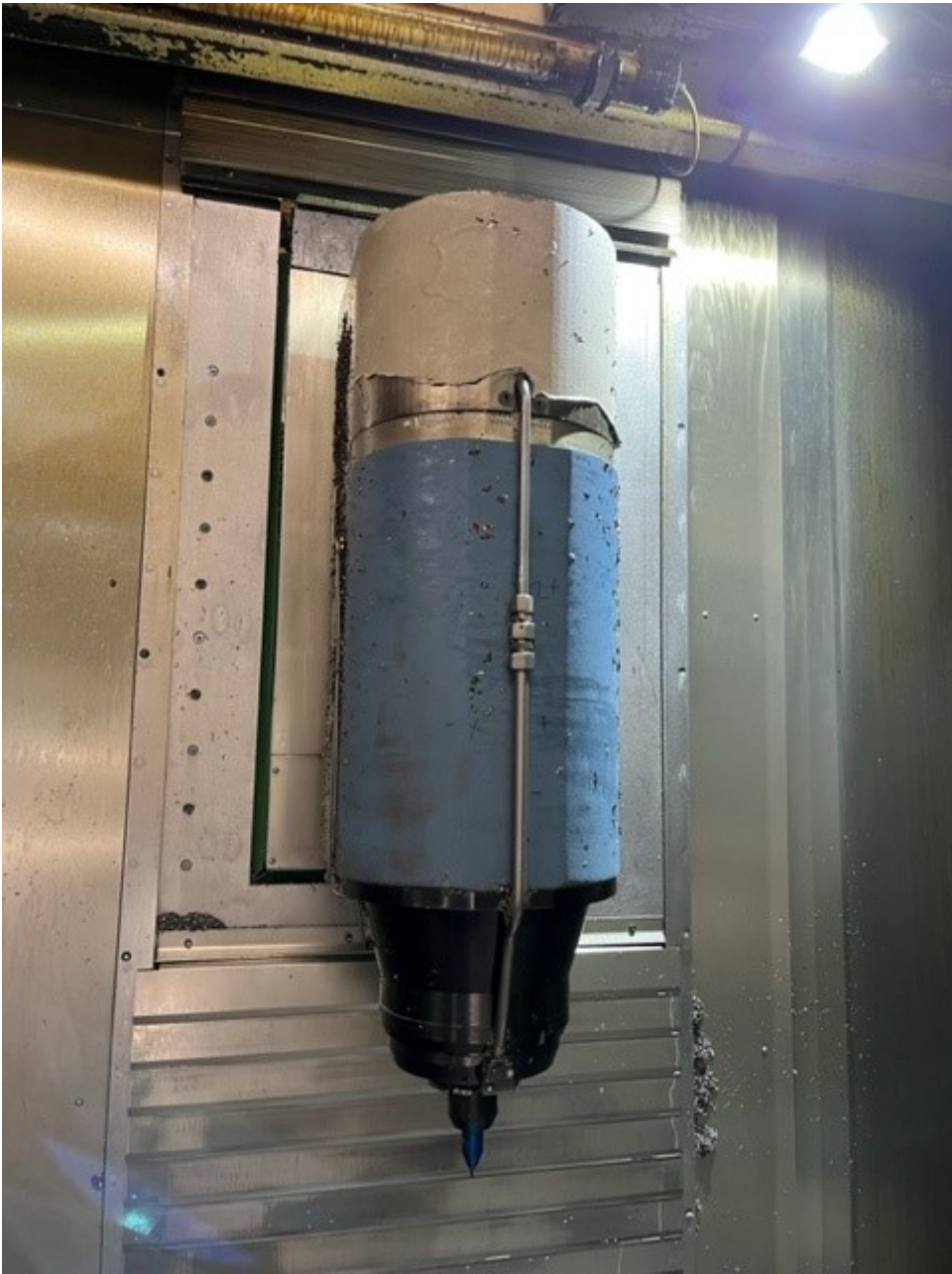


13





15



16



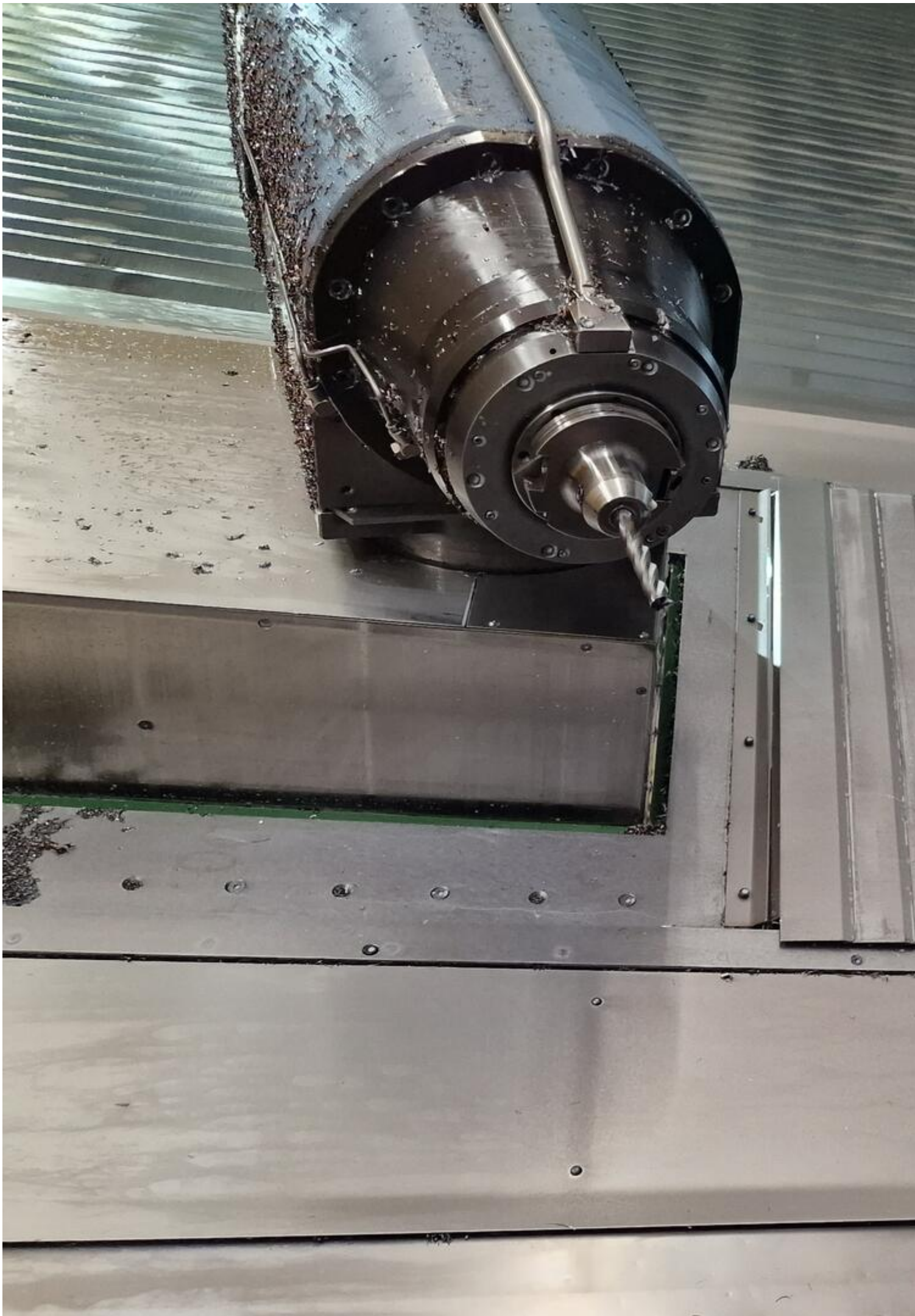
17











21



22

Inventar Nr. \_\_\_\_\_



IKS Messer  
Geringswalde

0039



ENTWICKLUNGS-UND M  
D 48624 SCHÖPPING

Baujahr:

2005

Ans

Typ: VHC-3-3000-S/50/E

Frec

Masch.-Nr.:

86472

Ans

Schaltplan Nr. CAD: 86472

Vors

Steu













SIEMENS SINUMERIK

Werkzeugnummer 11

Werkzeugname /\_M\_KRS\_STW\_M\_HEBE\_ELOHN\_500263\_REV

Werkzeuglänge SPINNING\_1\_REV01

MKS	Position [mm]	Restweg	T,F,S
X1	1207.389	0.000	T AUSCHLITZER
Y1	482.854	0.000	F EILG.
Z1	568.780	280.220	S

Werkzeugdaten

Werkzeugname SPINNING\_2\_REV01.MPF

Werkzeuglänge CYCLES(0.95,0) S

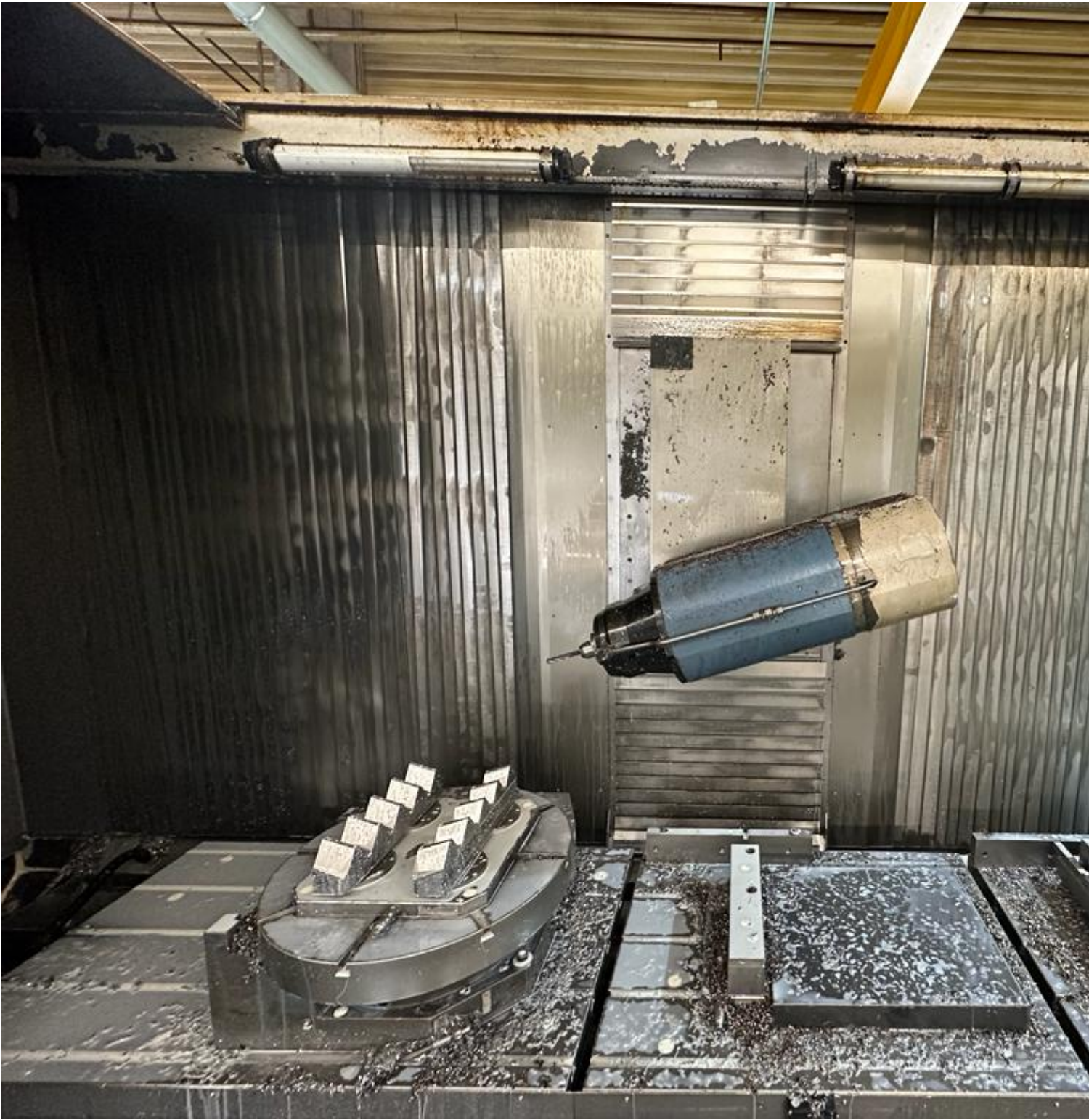
Werkzeugname WAGG M5 S

Werkzeuglänge CYCLES(1.1,"WC",0.27,0.0,0.0,0.0,0.0,0.0,-1) S

Werkzeugname BREITE 61.5 einfahren

Werkzeugname WAGG













ENTWICKLUNGS-UND MASCHINENBAU GmbH  
D 48624 SCHÖPPINGEN TEL.:02555/87-0

Baujahr:	2005	Anschluss-Spg.:	3x400V/230V/N/PE
Typ:	VHC-3-3000-S/50/E	Frequenz:	50 Hz
Masch.-Nr.:	86472	Anschluss-Lstg.:	75 KVA
Schaltplan Nr. CAD:	86472	Vorsicherung:	max.160A
		Steuer-Spg.:	24V-



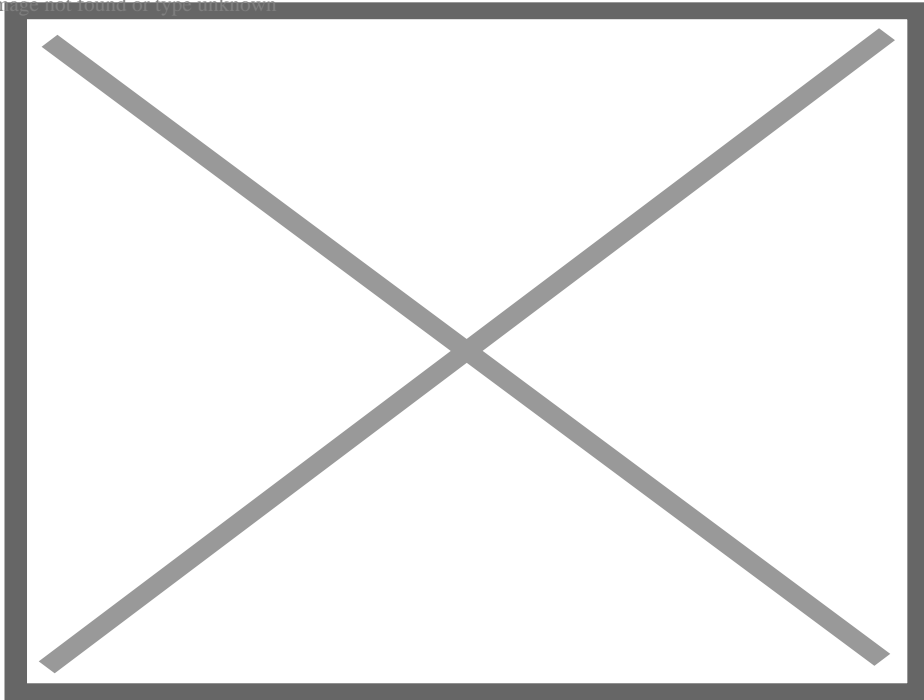


35

**Video:**



Image not found or type unknown



Asset-Trade

Assessment and Sale of Used Assets world wide

Am Sonnenhof 16

47800 Krefeld

Germany

Tel.: +49 2151 32500 33

Fax.: +49 2151 65 29 22

Email: [info@asset-trade.de](mailto:info@asset-trade.de)

Web.: <https://mail.asset-trade.de/en>

Ref. No.:

1423-06111025

**Overview and Technical Data:**

**AXA VHC-3-3000-S-50/E 5 Axis Machine Center**

**AXA**



Year of Build:  
May 2005

## Description:

# Used AXA VHC-3-3000-S-50/E - 5 Axis - Travelling column machining centre

CNC Controls: Siemens 840 with Shopmill

## Technical Data:

- Travels:
    - X-Axis: 2940 mm
    - Y-Axis: 700 mm
    - Z-Axis: 850 mm
    - B-Axis: Swivel Head +/-100°
    - C-Axis: NC Roundtable: D800mm x 0,001°, endless
    - Max travels X/Y/Z: 40/40/30 m/min
  - Table:
    - Table size: 3340 x 750 mm
    - Max Table Load: 1200 kg/m<sup>3</sup>
  - CNC rotary table type RTA 3-630
    - face plate can be used vertically/horizontally Diameter: 630 mm
    - center height: 330 mm
    - max. load vertical/horizontal: 1500 / 500 kg
    - rapid traverse speed 8 l/min. and continuous speed 2 l/min.
  - Toolholder: 26x SK 50 DIN69871A
  - Tools Change time: 6 Sec
  - Spindel: 30-4.000 U/Min/45KW
  - IKZ: 10 bar
  - Chip Conveyor
  - Power: 3 x 400/230V /PE; 50 Hz(+ I 0%/- 5%), 60 KVA
- 

The tilting spindle is the core element of our VHC machine series - maximize your possibilities by machining workpieces from almost any position. The fixed machine tables and stationary positioned tool magazine pool ensure that only the travelling column is in motion. A strong drive motor cater for the very dynamic performance

## Technical Data:

### Technical Data:

Control:

[SINUMERIK 840D](#)

Machine Hours:

78.300 hrs.

Spindle Speed:

4.000 rpm

Tool Holder:

[SK50](#)

Tool Capacity:  
26 x

### **Travels:**

X-Axis:  
2.940 mm  
Y-Axis:  
700mm  
Z-Axis:  
850 mm

### **Dimensions and Weight:**

Height:  
3.150 mm  
Width:  
3.350 mm  
Length:  
8.600 mm  
Weight:  
23.000 kg

### **Buyer Information:**

Condition:  
[Very good condition](#)  
Availability:  
[Sold](#)  
Sold as:  
[Free Loaded on Truck \(LOT\)](#)  
VAT:  
[19 %](#)  
Location:  
Germany

### **Images:**



1



2



3

SIEMENS

POWER TEMP

SINUMERIK

**7018244** Magazinachse stoppen UI

**AUTO** /\_N\_MKS\_DIR/\_N\_NEUE\_ELDAN\_566363\_REV

**Aktiv** SPANNUNG\_1\_REV81

Achsfreigabe fehlt

NKS	Position [mm]	Restveg	T, F, S	G-Funktion
X1	1207.389	0.000	T GUTSCHLICHTER	Hilfs-Funktion
Y1	482.854	0.000	F EILG.	Alle G-Funk.
Z1	568.780	280.220	S	
B1	72.576	0.000		
C1	0.222	0.000		
Nullpkt81				
<b>Aktueller Satz</b> SPANNUNG_2_REV81.MPF				
N1459 CYCLE832(0.01, 0) ↑				
N1460 M5 ↑				
N1461 M9 ↑				
N1462 CYCLE800(1, "VHC", 0, 27, 0, 0, 0, 0, 0, 0, 0, 0, 0, -1) ↑				
N1463 :-----↑				
N1464 : BREITE 61.5 einfahren ↑				
N1465 :-----↑				

1688. I 100%  
1888. I 100%

100% 200%

**Istwert MKS**

Prog. koerr. Mitzeich. DXA Satz-suchl. Prog. Beeinfl. NC





5



6











11



12



13





15



16



17











21



22

Inventar Nr. \_\_\_\_\_



IKS Messer  
Geringswalde

0039



ENTWICKLUNGS-UND M  
D 48624 SCHÖPPING

Baujahr:

2005

Ans

Typ: VHC-3-3000-S/50/E

Frec

Masch.-Nr.:

86472

Ans

Schaltplan Nr. CAD: 86472

Vors

Steu













SIEMENS

SINUMERIK

Werkzeugnummer 11  
I\_N\_MKS\_010V\_M\_HEBE\_ELDON\_500263\_REV  
SPINNING\_1\_REV01

MKS	Position [mm]	Restweg	T,F,S
X1	1207.389	0.000	T
Y1	482.854	0.000	F
Z1	568.780	280.220	S

72.57% 0.000  
8.222 0.000

SPINNING\_2\_REV01.MPF

RECYCLES(0.01,0) S  
HARD MS S  
HARD MS S  
CYCLE(0.01,"MC",0.27,0.0,0.0,0.0,0.0,0.0,-1) S  
BREITE 61.5 einfahren

Speisewicht links aktiv 0 / 1  
Speisewicht rechts aktiv 0 / 1  
B-Achse verriegelt  
Luft aktiv Auslöser-/Anschaltung  
Auto/Entzahn 0 / 1  
WZ-Spinner

Links Tur aktiv  
Links Tur inaktiv  
Rechts Tur aktiv  
Rechts Tur inaktiv  
Programmiert  
Kette Bremsbremse  
Lange Bremsbremse  
kurze

Q W E R T Y U I O P  
A S D F G H J K L ; ' /  
Z X C V B N M , . - /  
[ ] \ / \* + =

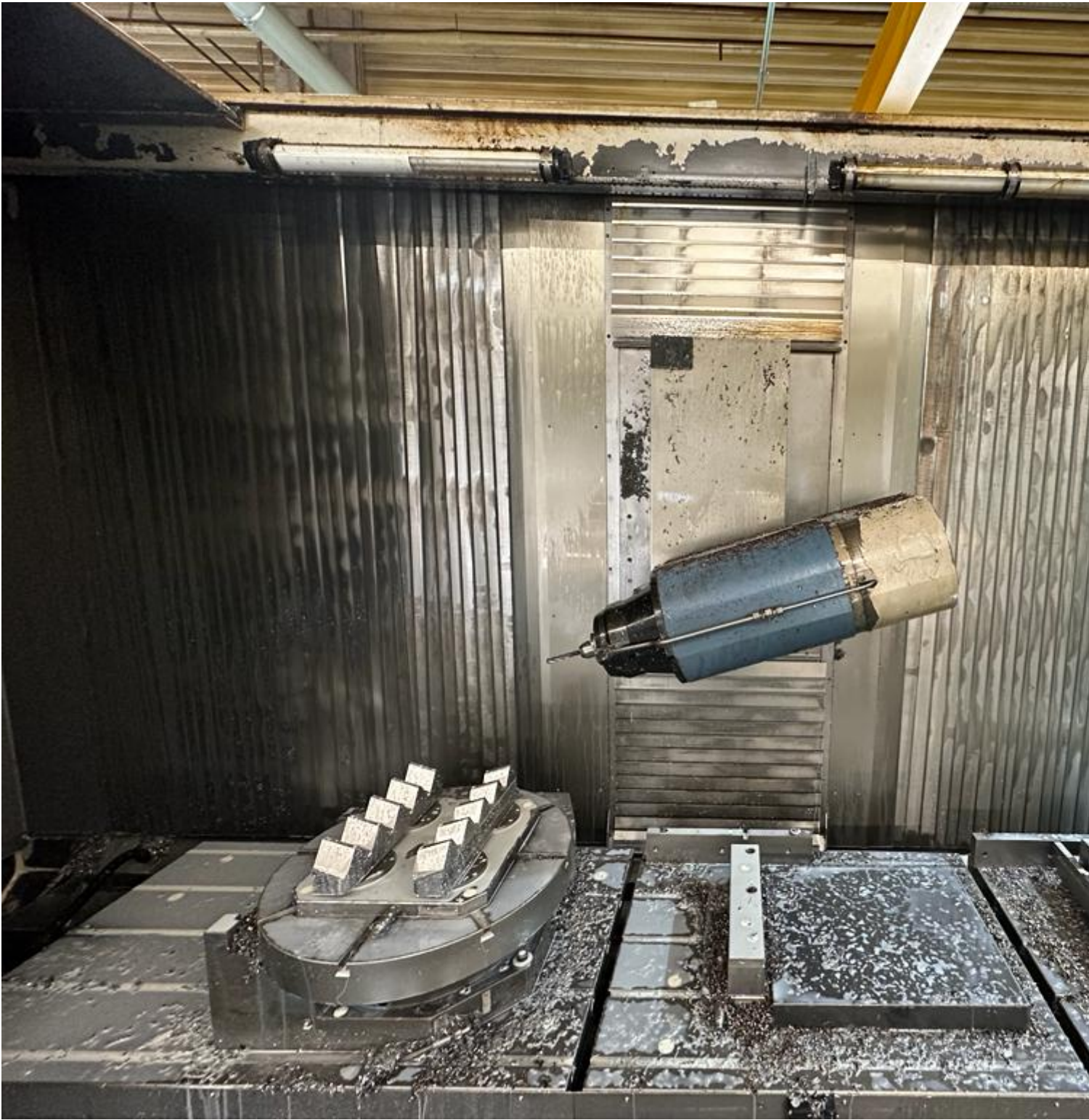
STREIFEN

Red emergency stop button

W B C/A  
U1

Rot stop button, Green start button













ENTWICKLUNGS-UND MASCHINENBAU GmbH  
D 48624 SCHÖPPINGEN TEL.:02555/87-0

Baujahr:	2005	Anschluss-Spg.:	3x400V/230V/N/PE
Typ:	VHC-3-3000-S/50/E	Frequenz:	50 Hz
Masch.-Nr.:	86472	Anschluss-Lstg.:	75 KVA
Schaltplan Nr. CAD:	86472	Vorsicherung:	max.160A
		Steuer-Spg.:	24V-



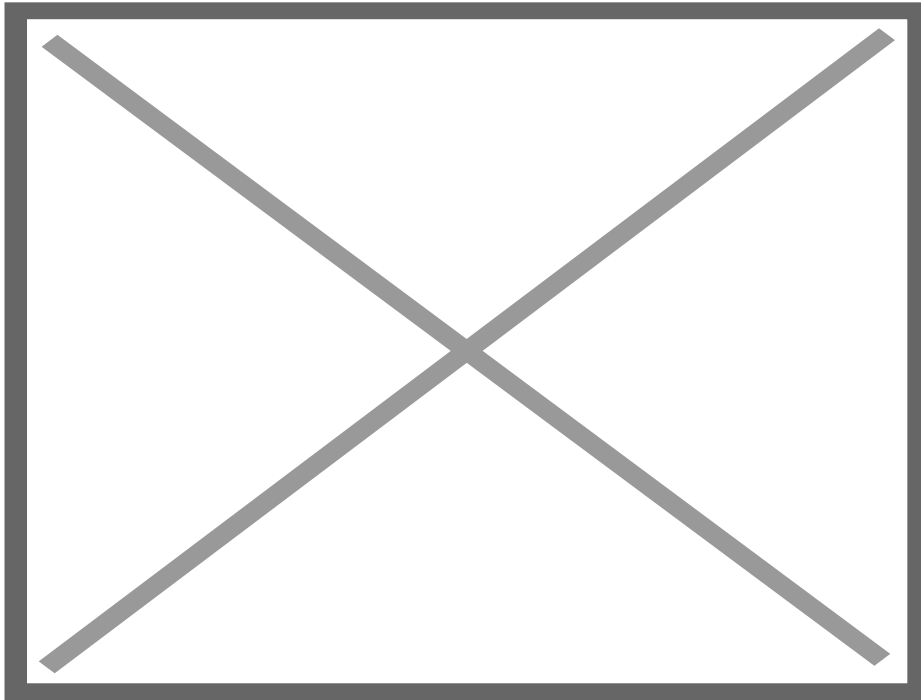


35

**Video:**



**AXA VHC-3-3000-S-50/E**  
Used 5 Axis - Travelling column machining centre  
Siemens 840D CNC Control / Build 2005



Asset-Trade

Assessment and Sale of Used Assets world wide

Am Sonnenhof 16

47800 Krefeld

Germany

Tel.: +49 2151 32500 33

Fax.: +49 2151 65 29 22

Email: [info@asset-trade.de](mailto:info@asset-trade.de)

Web.: <https://mail.asset-trade.de/en>

Generated on 04.04.2026

© Copyright 2026 - [Asset-Trade](#)

Page