



Image not found or type unknown

Ref. No.:

1411-03201235

Overview and Technical Data:

SWA/Kiefel Madillon punching Press 500kn Hydraulic

KIEFEL

K

L

M

T

E

Year of Build:
Jan 2012

Description:

Used SWA/KIEFEL punch press 500kN - Madillon punching

- CNC control Siemens
- Tool type: Pressure generator with punching tool

Technical data:

- Table surface (WxD): 2500 x 1200 mm
- Clamping force: 500 kN
- Opening width: 1000 mm
- Opening force: 200 kN
- Follow-up time: 273 ms
- Safety distance: 780 (to be 500) mm
- Operating pressure hydraulics: max. 220 bar
- Operating pressure pneumatics: min. 6 bar
- Hydr. tank capacity: 630 l
- Connected load: 115 kW
- Operating voltage and frequency: 400 V/ 50 Hz
- Weight: 19.000 kg

Still under Power. Further data on request

SWA has hydraulic presses with a clamping force of up to 500 tonnes. We use our presses to adjust moulds and to produce tryouts and prototypes.

Punching tools cut outer, inner contours and holes on previously pressed, injection moulded or foamed components. We specialise in stamping the highest quality three-dimensional products such as complete instrument panels, door panels and headliners as well as acoustic and insulation parts.

SWA develops and manufactures tools, machines and systems for the production of vehicle interior, exterior and acoustic insulation parts, especially for customers in the automotive industry and its suppliers.

SWA produces tools, machines and systems for the production of interior, exterior and acoustic insulation parts for vehicles. These products from SWA are available for use at all major automotive production sites and are therefore the ideal complement to the Kiefel technology portfolio.

Technical Data:

Technical Data:

Control:
[SIEMENS](#)

Dimensions and Weight:

Height:
4.400 mm
Length:
4.500 mm
Width:
3.800 mm
Weight:
19.000 kg

Buyer Information:

Condition:
[Very good condition](#)
Available:
[Immediately](#)
Sold as:
[EXW \(Ex Works - Incoterm\)](#)
VAT:
[19 %](#)
Buyers Premium:
[18 %](#)
Location:
Germany

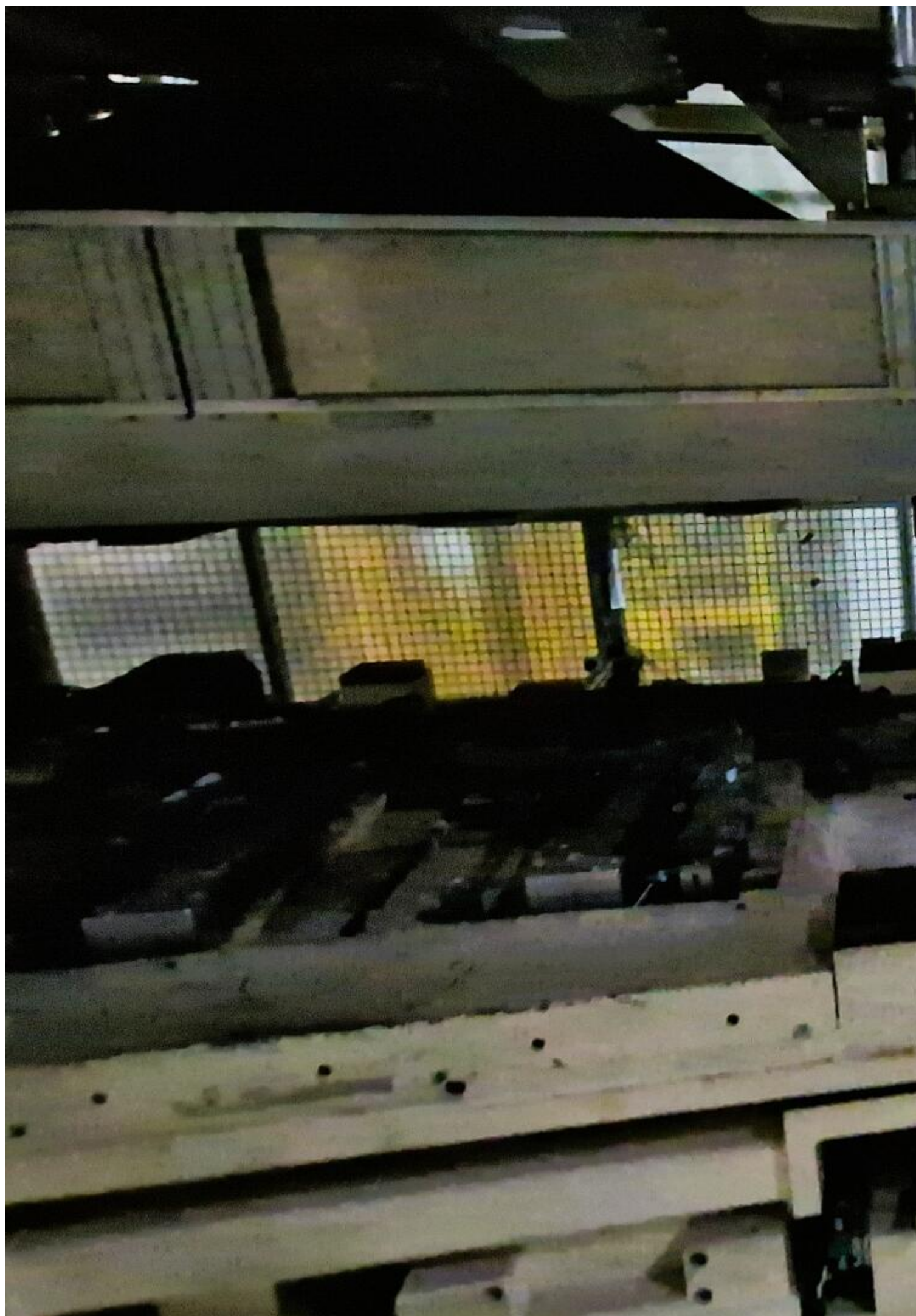
Images:











Systemtechnik für
Werkzeuge und
Anlagen



Werkzeugtyp

Stanzwerkzeug

Werkzeug-Nr.

52367100

Teilbezeichnung

Ford CD 391 Medaillon fron

Teil-Nr.

DS73-F23756-7

DS73-F27630-1

Systemtechnik für Werkzeuge und Anlagen

SWA

Průmyslová 763
CZ - 33301 Stod
tel +420 377 233 711
fax +420 377 233 712
www.swa.cz, swa@swa.cz

Maschinentyp

Maschinen Nr.

Elektroplan Nr.

Hydraulikplan Nr.

Pneumatikplan Nr.

Anschlussleistung

Betriebssp., Frequenz

Füllmenge Hydr. Tank

Stanzen und Siegeln Anlage

52369100

52369100

HS-017-D296-1-A

52369100

115 kW

400 V 50 Hz

630 l

Tischfläche (BxT)

2500 x 1200 mm

Hub (oben / unten)

1000 / mm

Öffnungsweite

1000 mm

Schliesskraft

500 kN

Öffnungskraft

200 kN

Betriebsdruck Hydr. max.

220 bar

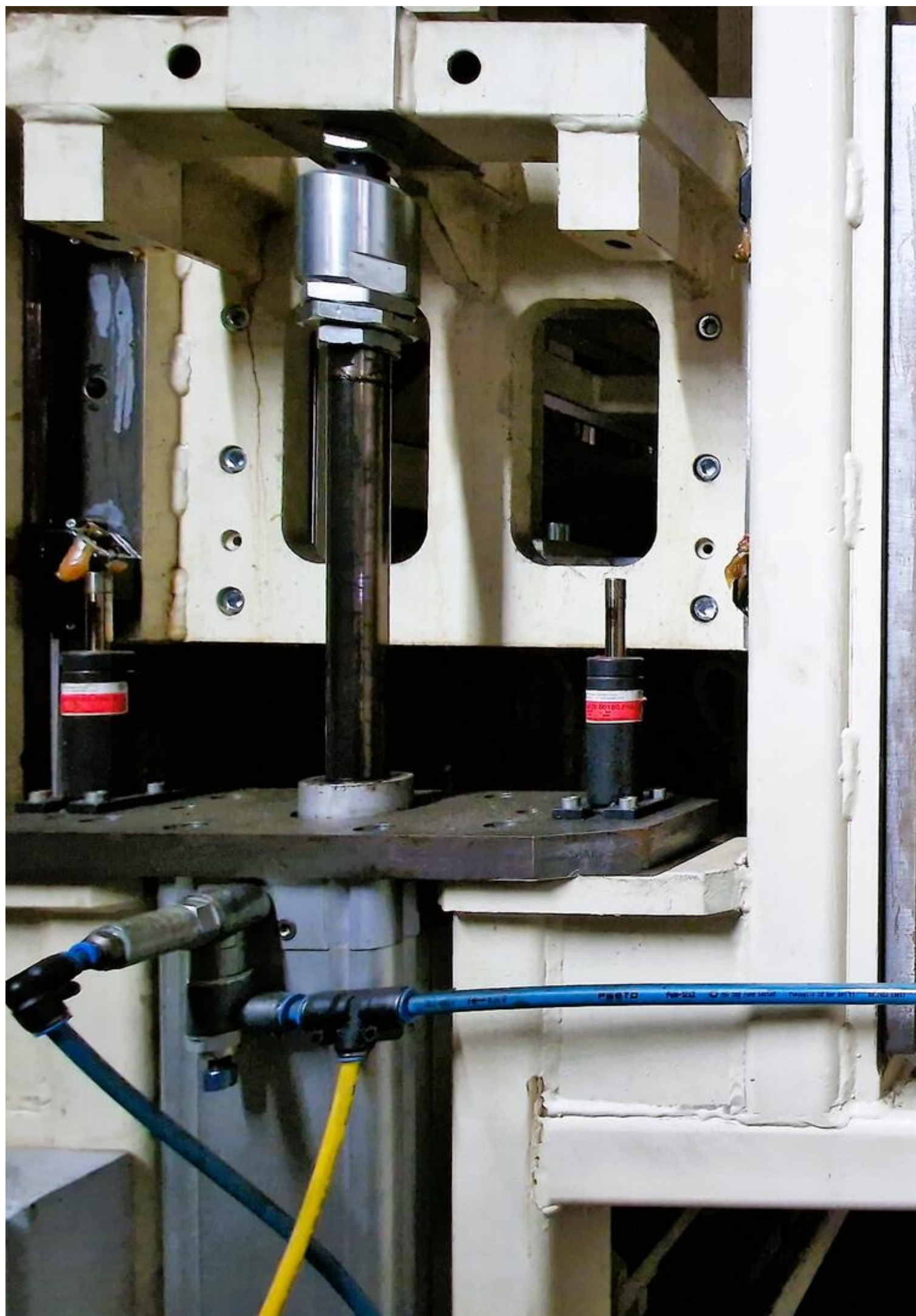
Betriebsdruck Pneu. min.

6 bar

Baujahr / Gewicht 2012 / 19000 kg







Video:



Asset-Trade

Assessment and Sale of Used Assets world wide

Am Sonnenhof 16

47800 Krefeld

Germany

Tel.: +49 2151 32500 33

Fax.: +49 2151 65 29 22

Email: info@asset-trade.de

Web.: <https://mail.asset-trade.de/en>

Ref. No.:
1411-03201235

Overview and Technical Data:

SWA/Kiefel Madillon punching Press 500kn Hydraulic

KIEFEL

K

L

M

T

E

Year of Build:
Jan 2012

Description:

Used SWA/KIEFEL punch press 500kN - Madillon punching

- CNC control Siemens
- Tool type: Pressure generator with punching tool

Technical data:

- Table surface (WxD): 2500 x 1200 mm
- Clamping force: 500 kN
- Opening width: 1000 mm
- Opening force: 200 kN
- Follow-up time: 273 ms
- Safety distance: 780 (to be 500) mm
- Operating pressure hydraulics: max. 220 bar
- Operating pressure pneumatics: min. 6 bar
- Hydr. tank capacity: 630 l
- Connected load: 115 kW
- Operating voltage and frequency: 400 V/ 50 Hz
- Weight: 19.000 kg

Still under Power. Further data on request

SWA has hydraulic presses with a clamping force of up to 500 tonnes. We use our presses to adjust moulds and to produce tryouts and prototypes.

Punching tools cut outer, inner contours and holes on previously pressed, injection moulded or foamed components. We specialise in stamping the highest quality three-dimensional products such as complete instrument panels, door panels and headliners as well as acoustic and insulation parts.

SWA develops and manufactures tools, machines and systems for the production of vehicle interior, exterior and acoustic insulation parts, especially for customers in the automotive industry and its suppliers.

SWA produces tools, machines and systems for the production of interior, exterior and acoustic insulation parts for vehicles. These products from SWA are available for use at all major automotive production sites and are therefore the ideal complement to the Kiefel technology portfolio.

Technical Data:

Technical Data:

Control:
[SIEMENS](#)

Dimensions and Weight:

Height:
4.400 mm
Length:
4.500 mm
Width:
3.800 mm
Weight:
19.000 kg

Buyer Information:

Condition:
[Very good condition](#)
Available:
[Immediately](#)
Sold as:
[EXW \(Ex Works - Incoterm\)](#)
VAT:
[19 %](#)
Buyers Premium:
[18 %](#)
Location:
Germany

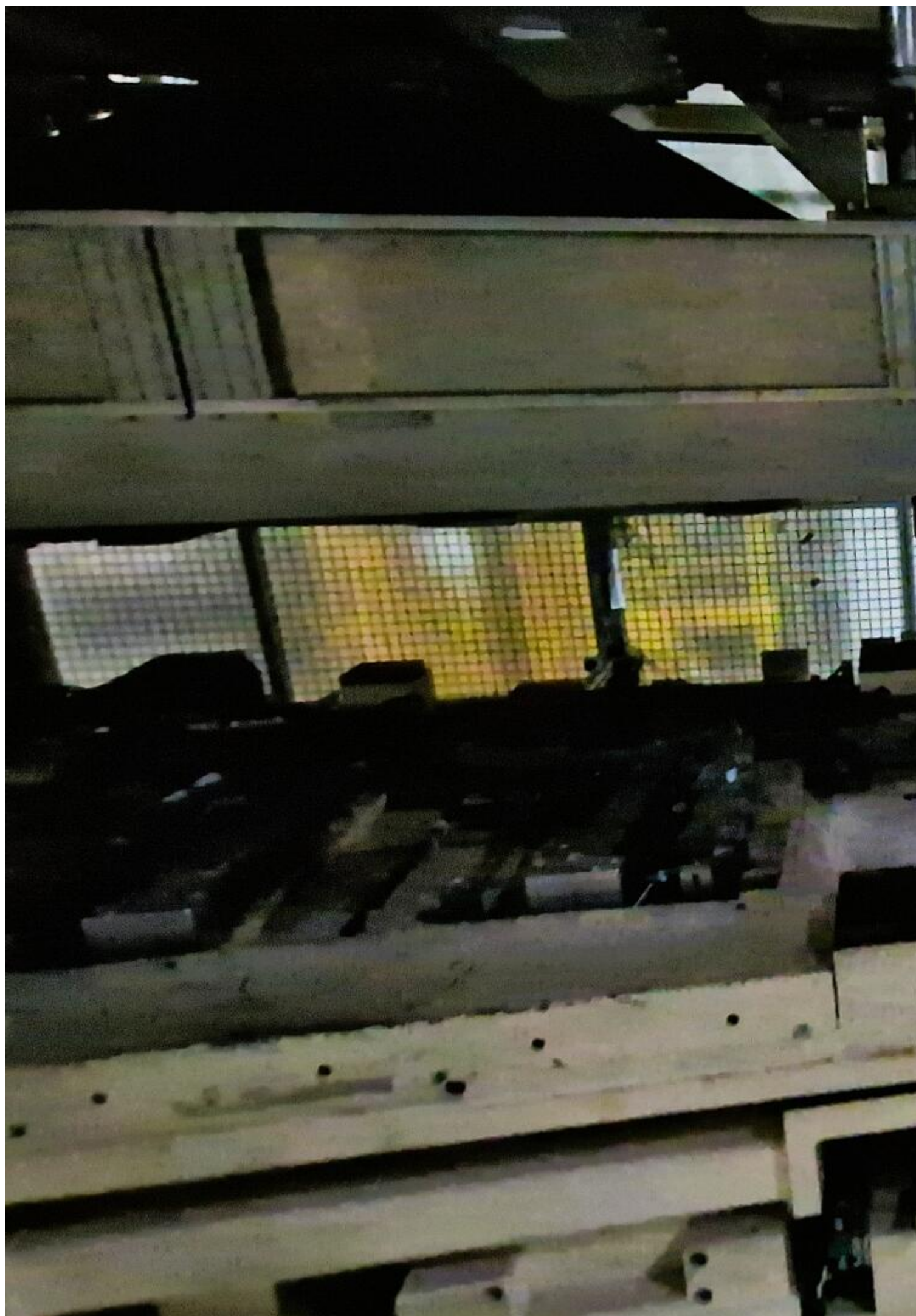
Images:











Systemtechnik für
Werkzeuge und
Anlagen



Werkzeugtyp

Stanzwerkzeug

Werkzeug-Nr.

52367100

Teilbezeichnung

Ford CD 391 Medaillon fron

Teil-Nr.

DS73-F23756-7

DS73-F27630-1

Systemtechnik für
Werkzeuge und
Anlagen

SWA

Průmyslová 763
CZ - 33301 Stod
tel +420 377 233 711
fax +420 377 233 712
www.swa.cz, swa@swa.cz

Maschinentyp

Maschinen Nr.

Elektroplan Nr.

Hydraulikplan Nr.

Pneumatikplan Nr.

Anschlussleistung

Betriebssp., Frequenz

Füllmenge Hydr. Tank

Stanzen und Siegeln Anlage

52369100

52369100

HS-017-D296-1-A

52369100

115 kW

400 V 50 Hz

630 l

Tischfläche (BxT)

2500 x 1200 mm

Hub (oben / unten)

1000 / mm

Öffnungsweite

1000 mm

Schliesskraft

500 kN

Öffnungskraft

200 kN

Betriebsdruck Hydr. max.

220 bar

Betriebsdruck Pneu. min.

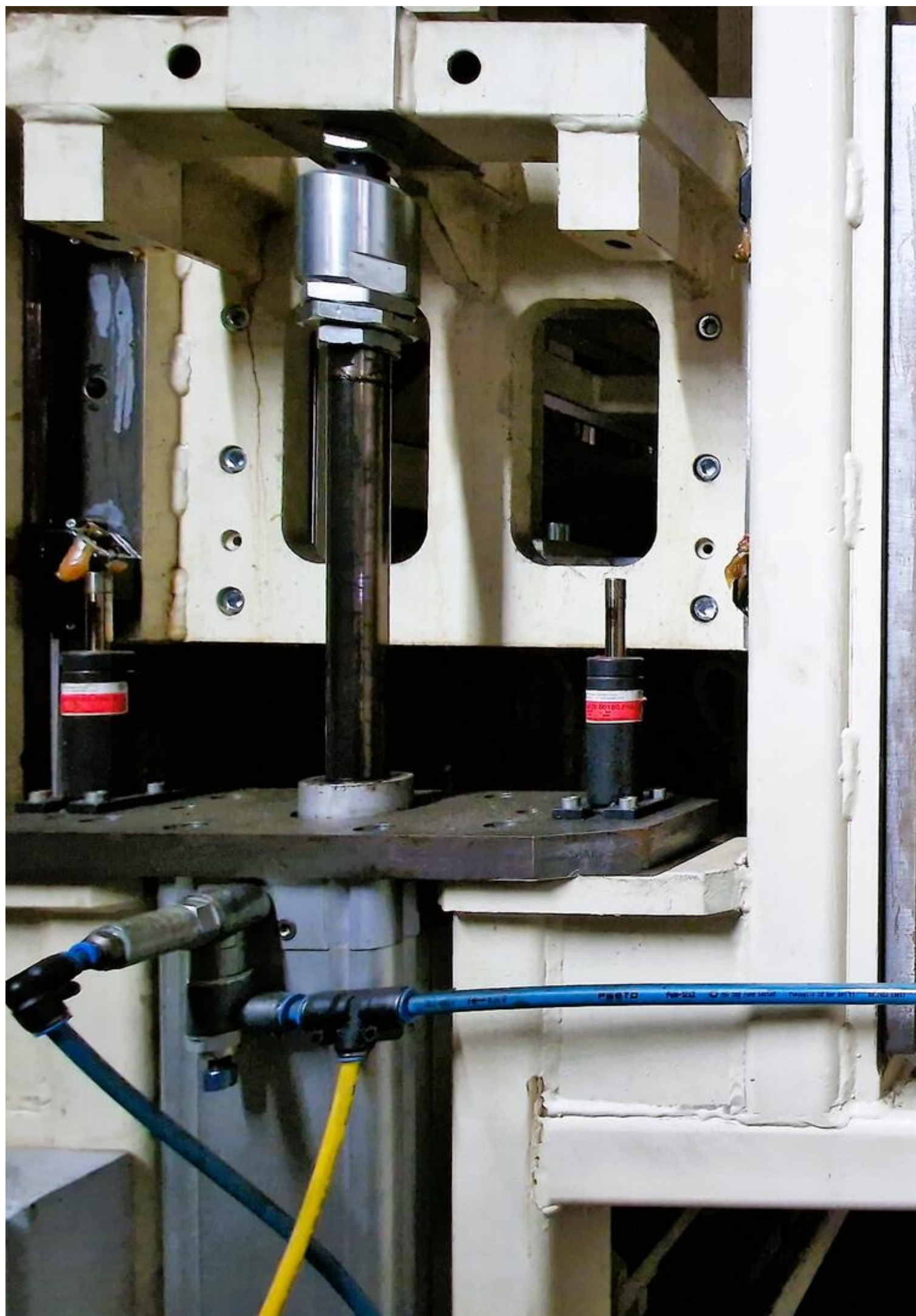
6 bar

Baujahr / Gewicht

2012 / 19000 kg







Video:



Asset-Trade

Assessment and Sale of Used Assets world wide

Am Sonnenhof 16

47800 Krefeld

Germany

Tel.: +49 2151 32500 33

Fax.: +49 2151 65 29 22

Email: info@asset-trade.de

Web.: <https://mail.asset-trade.de/en>

Generated on 16.02.2026

© Copyright 2026 - [Asset-Trade](#)

Page