

Image not found or type unknown



Ref. No.:

1347-11291553

Overview and Technical Data:

DEUTZ Diesel Emergency Generator 430kw 500 kVA

NOT DEFINED



Multiple Makes or Not Defined

Year of Build:

Jan 2002

Description:

Used diesel emergency generators

DEUTZ BF 8 M 1015 CP with Leroy-Sommer LSA 47.2 low voltage generator 500 kVA

Operating hours approx 121,15

Technical data Deutz:

- Number of cylinders 8
- Displacement 15.9 l
- Design Vee
- max. power 430 kW
- Continuous power: 400kW
- RPM 2100
- Torque at RPM from-to 2720 Nm
- Tier Min. EU II
- Tier Max. EU III
 - Aspiration T
- Dead weight 1060 kg
- Cooling type water
- Bore 132 mm

Modern water-cooled four-stroke 8-cylinder engines in V-configuration.

Exhaust turbocharger and exhaust pipes water-cooled.

Gear-driven power take-offs.

Modern fuel injection system with mechanical governor.

Electronic governor for on-board units.

Intercooling by means of engine coolant.

Innovative multi-parallel cooling system.

Compact dimensions.

Technical Data:

Technical Data:

Control:

[CNC](#)

Machine Hours:

122

Buyer Information:

Condition:

[Very good condition](#)

Technical data Leroy-Sommer LSA 47.2

- Installation of power generator 500 kVA
- Installation of exhaust pipe St 37N2A, DN 200 incl. exhaust silencer and insulation
- Installation of 1 day tank 1000 l, make: ADAM
- Assembly of 1 storage tank GfK 2.000 l incl. filling and venting pipe,
- Oil supply line from the storage tank to the day tank, type Flexwell FSR 16/30, double-walled, incl. leakage indicator device.
- Installation of the supply and exhaust air system
- Installation of control cabinet and control cable

Technical data Cooling Unit

Honeycomb cooler with closed cooling circuit

- Fan drive: mechanical
- Air flow rate: 22,000 m³/h
- Cooling liquid: water and glycol
- Capacity: approx. 80 ltr.

Storage:

Engine and generator are elastically mounted by means of insulators on a base frame made of sectional steel.

- The transmission of structure-borne noise is below 1 O Hz.
- Machine noise inside the installation room: 102 dB(A)
- Hearing protection is provided for the operating personnel.
- Machine noise outside the room: approx. 65 dBA

Available:

[Q1](#)

Sold as:

[EXW \(Ex Works - Incoterm\)](#)

VAT:

[19 %](#)

Buyers Premium:

[16 %](#)

Location:

Germany

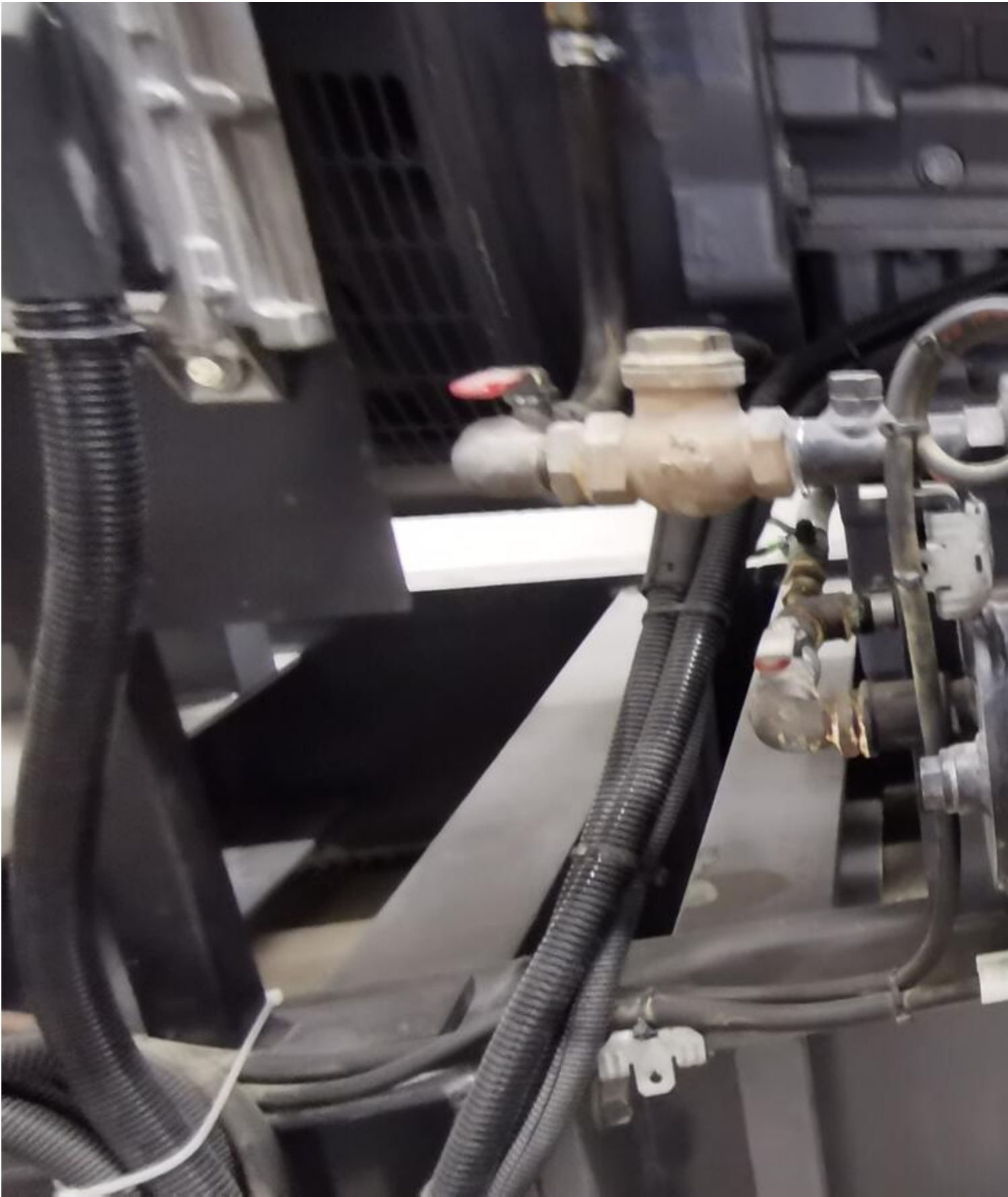
Images:

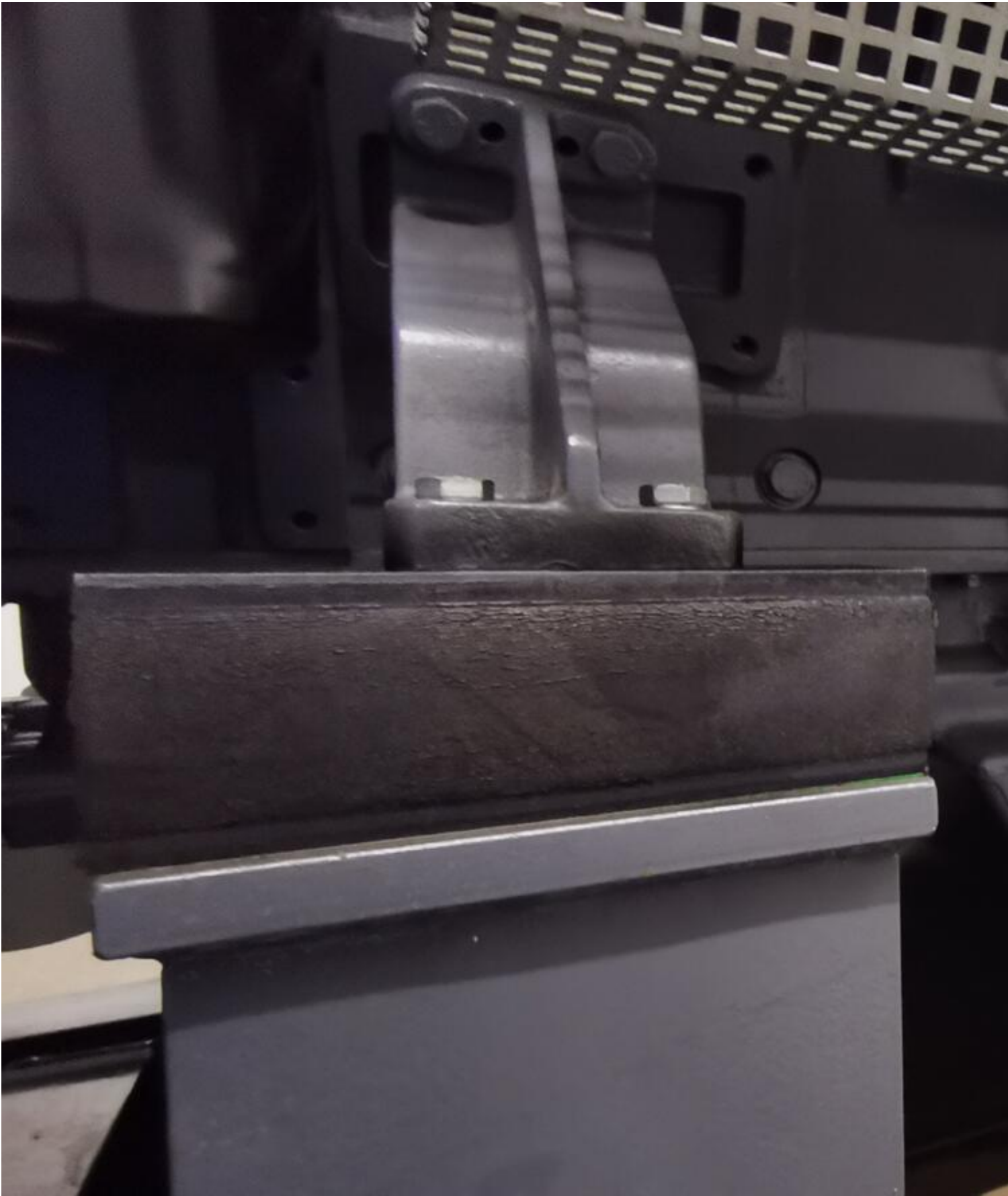






























Asset-Trade

Assessment and Sale of Used Assets world wide

Am Sonnenhof 16

47800 Krefeld

Germany

Tel.: +49 2151 32500 33

Fax.: +49 2151 65 29 22

Email: info@asset-trade.de

Web.: <https://mail.asset-trade.de/en>

Ref. No.:
1347-11291553

Overview and Technical Data:

DEUTZ Diesel Emergency Generator 430kw 500 kVA

NOT DEFINED



Multiple Makes or Not Defined

Year of Build:

Jan 2002

Description:

Used diesel emergency generators

DEUTZ BF 8 M 1015 CP with Leroy-Sommer LSA 47.2 low voltage generator 500 kVA

Operating hours approx 121,15

Technical data Deutz:

- Number of cylinders 8
- Displacement 15.9 l
- Design Vee
- max. power 430 kW
- Continuous power: 400kW
- RPM 2100
- Torque at RPM from-to 2720 Nm
- Tier Min. EU II
- Tier Max. EU III
 - Aspiration T
- Dead weight 1060 kg
- Cooling type water
- Bore 132 mm

Modern water-cooled four-stroke 8-cylinder engines in V-configuration.

Exhaust turbocharger and exhaust pipes water-cooled.

Gear-driven power take-offs.

Modern fuel injection system with mechanical governor.

Electronic governor for on-board units.

Intercooling by means of engine coolant.

Innovative multi-parallel cooling system.

Compact dimensions.

Technical Data:

Technical Data:

Control:

[CNC](#)

Machine Hours:

122

Buyer Information:

Condition:

[Very good condition](#)

Technical data Leroy-Sommer LSA 47.2

- Installation of power generator 500 kVA
- Installation of exhaust pipe St 37N2A, DN 200 incl. exhaust silencer and insulation
- Installation of 1 day tank 1000 l, make: ADAM
- Assembly of 1 storage tank GfK 2.000 l incl. filling and venting pipe,
- Oil supply line from the storage tank to the day tank, type Flexwell FSR 16/30, double-walled, incl. leakage indicator device.
- Installation of the supply and exhaust air system
- Installation of control cabinet and control cable

Technical data Cooling Unit

Honeycomb cooler with closed cooling circuit

- Fan drive: mechanical
- Air flow rate: 22,000 m³/h
- Cooling liquid: water and glycol
- Capacity: approx. 80 ltr.

Storage:

Engine and generator are elastically mounted by means of insulators on a base frame made of sectional steel.

- The transmission of structure-borne noise is below 1 O Hz.
- Machine noise inside the installation room: 102 dB(A)
- Hearing protection is provided for the operating personnel.
- Machine noise outside the room: approx. 65 dBA

Available:

[Q1](#)

Sold as:

[EXW \(Ex Works - Incoterm\)](#)

VAT:

[19 %](#)

Buyers Premium:

[16 %](#)

Location:

Germany

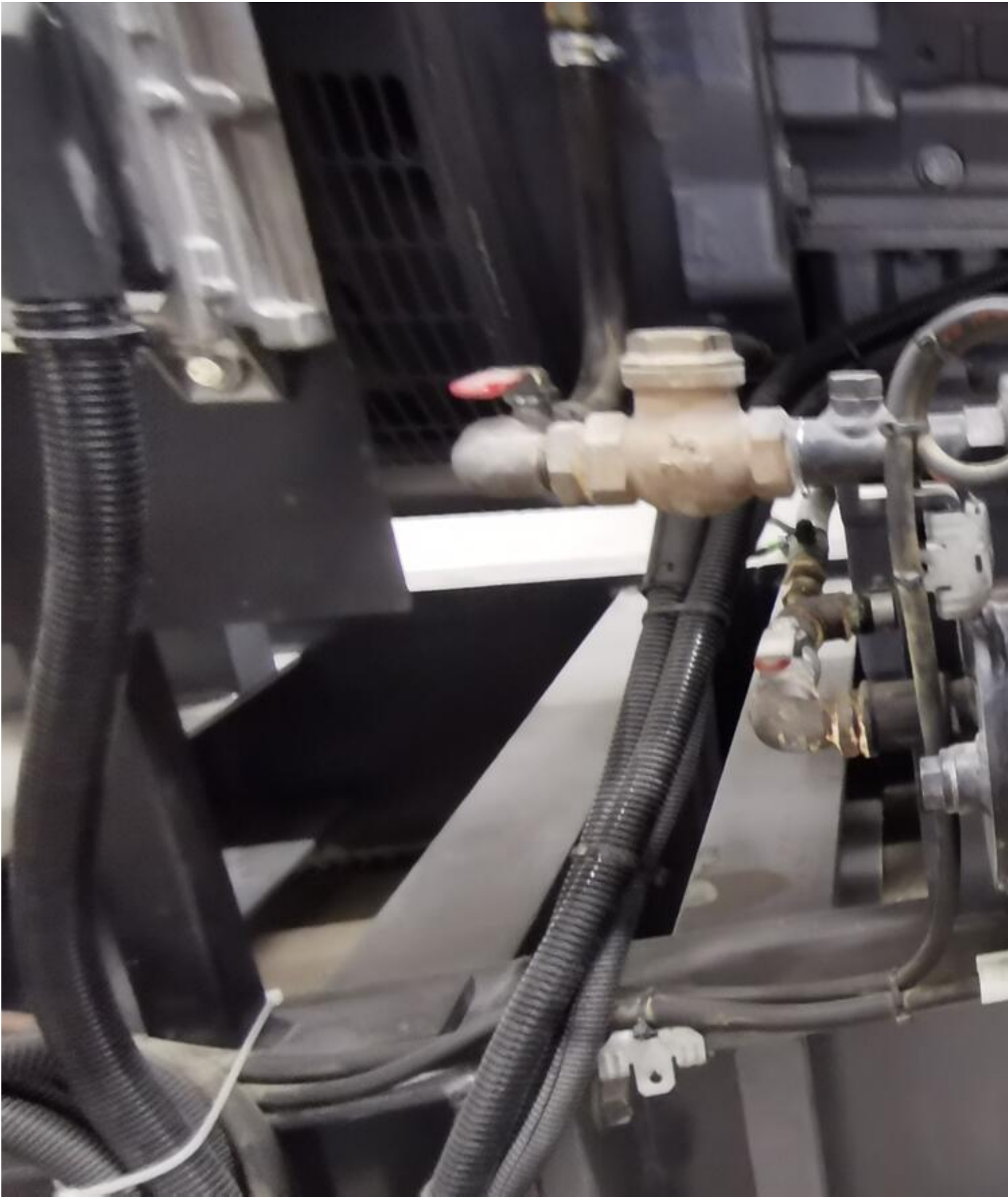
Images:

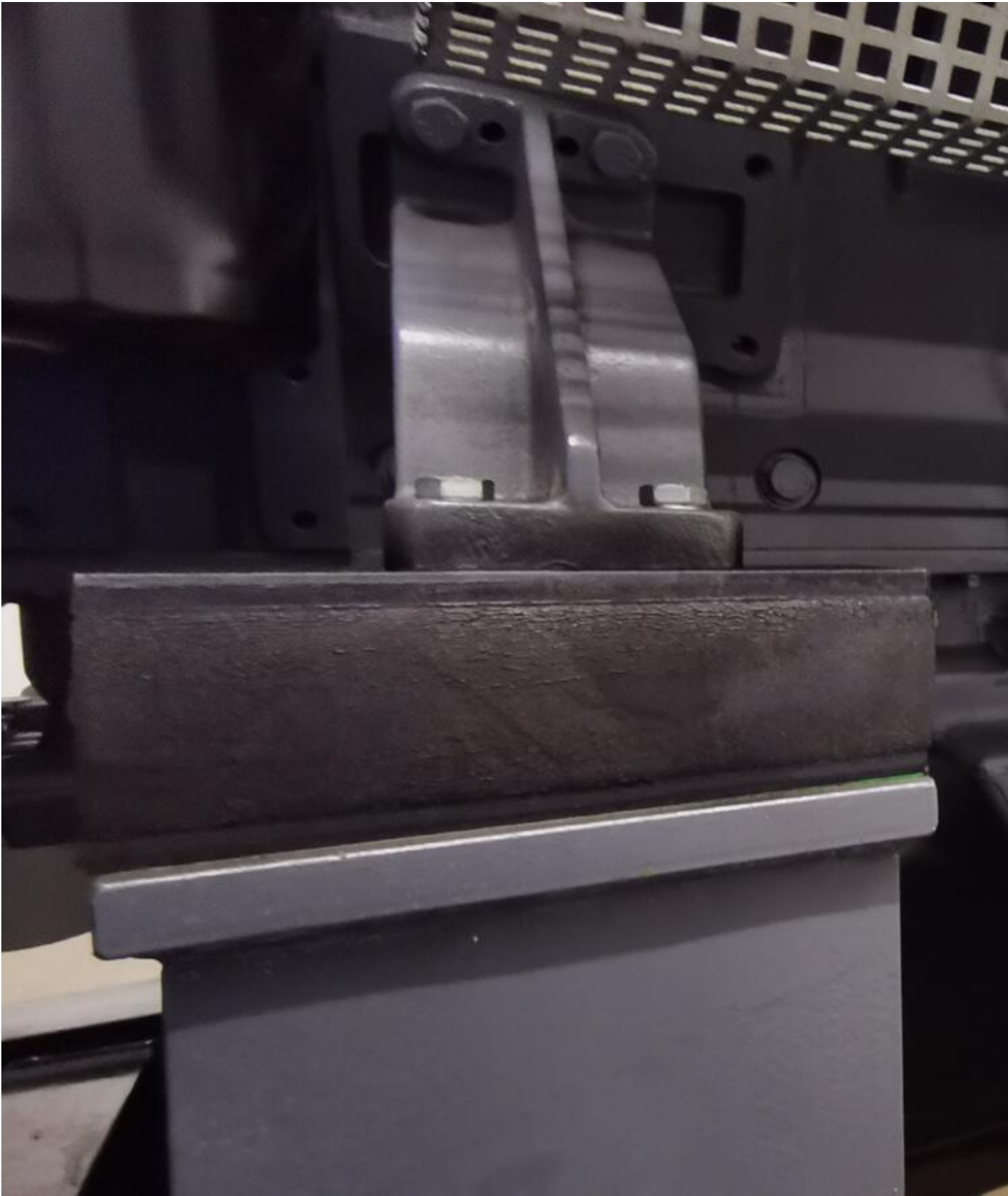






























Asset-Trade

Assessment and Sale of Used Assets world wide

Am Sonnenhof 16

47800 Krefeld

Germany

Tel.: +49 2151 32500 33

Fax.: +49 2151 65 29 22

Email: info@asset-trade.de

Web.: <https://mail.asset-trade.de/en>

Generated on 16.02.2026

© Copyright 2026 - [Asset-Trade](#)

Page