



Image not found or type unknown

Ref. No.:

1332-0809200

Overview and Technical Data:

MAHR 828 CIM -1000 Precision Universal Length Measuring Machine

MAHR

Mahr

Year of Build:

Jan 1997

Description:

Used MAHR 828 CiM 1000 Ultra High Precision Motorized Length Universal Measuring Machine Precimar

Build 1997

Last check : 02.2015

Software Version: 3.06-4

Technical Data:

- Measuring ranges (switchable mm/inch):
 - Measuring range for outer measurement: 0 to 1000 mm
 - Measuring range for inner measurement: 0.5 to 845 mm
- Performance data:
 - Measuring range (incremental) : 300 mm
 - Increment: 0.01 μm
 - Measuring uncertainty MPEE1 (L in mm) : ? (0,055 + L/1500) μm
 - Repeatability: ? 0,03 μm
 - Measuring forces (internal/external measurement) : 0 to 13.9 N elec. monitoring
- Guides
 - Drive (measuring slide) aerostatic motorized
 - Max. travel speed: 50 mm/s
 - Max. contact speed with joystick: 8 mm/s
 - Max. contact speed with direction buttons: 3.5 mm/s
 - Contact speed with inductive measuring probe 1320/1 : 0.6 mm/s
- Object table:
 - Table surface: (length x width): 150 X 350 mm
 - Table load capacity: 250N
 - Vertical movement of Z-drive: 70 mm motorized
 - Increment Z: 0.01 mm
 - Transverse movement Y: 25 mm
 - Floating movement X: ± 10 mm
 - Tilting movement Y : 3 degrees
 - Swivel movement Z : 8 degrees
 - Probe height (above lowest table position): 70 mm

Mahr 828 CIM 1000 has the highest measuring accuracy:

- Unique low length measuring uncertainty for precision products and gage calibration management
- 100% adherence to the comparator principle according to Ernst Abbe
- Online temperature monitoring
- Software-supported measuring force generation, especially advantageous for thin-walled workpieces and gage calibration devices
- Semi-automatic bore measurement and inside measurement
- High flexibility in the application range
- Numerous accessory sets and components in a modular system to solve different measuring tasks, incl. thread pitch, thread, tapered thread, toothing
- Measuring and evaluation software under MS-Windows, 828 WIN
- Patented measuring procedure

- Minimum measuring uncertainty due to the use of aerostatic guides for all slides supported by the machine bed, the mobile bearing of the measuring spindle over a spring parallelogram which is free of both play and friction, electronic regulation of measuring forces and automatic contacting. Subjective influences are therefore minimized and unintentional collisions with the testpiece prevented

The motorized CIM series enables a user-friendly, fast and reliable measurement of testing devices and precision products with the smallest measuring uncertainty possible.

Length measuring deviation:

$$\text{MPEE1} = (0.055 + L/1500) \text{ } \mu\text{m} \text{ (L in mm)}$$

Its unusually high measuring precision, the high measuring speed, novel measuring procedure and its operating comfort assure the 828 CiM its top position amongst the universal measuring machines

Mahr 828 CiM Length Measuring Machine Features:

- Superb performance data, measuring runs of unique perfection and high-quality computer technology allow quality management that far exceeds the EN 29 000... and ISO 9000 guidelines. The motorized CiM 500 and 1000 allow user-friendly, fast, reliable measurement with uniquely low measuring uncertainty.
- Operation is simplified through position-controlled driving of the measuring slide (by joystick) with progressive deflection characteristic, automatic contact detection, automatic recognition of outside and inside measurements, and computer-aided detection of reversing points.
- Immense savings in time through high measuring slide travel speeds and motor-driven vertical movement of the support table.
- Almost unlimited application flexibility due to the software supported possibility to measure the testing devices which are most often used in practice.
- Machine control, data recording, processing, logging and transfer using powerful, menu-driven software.
- Minimum measuring uncertainty due to the use of bearings for all slides supported by the machine bed; the support of the measuring spindle over a spring parallelogram which is free of both play and friction; electronic regulation of measuring forces and automatic contacting. These factors allow subjective influences to be minimized and unintentional collisions with the testpiece prevented.
- Highest measuring certainty due to single-level measuring value generation, exact compliance to the Abbé comparator principle, high-grade incremental path control system. Correction of systematic deviations and reduction of random deviations all result in a measuring uncertainty MPE of $(0.055 + L/1500) \text{ } \mu\text{m}$ (L in mm). (At 20.0 °C in inspection room, class 1 VDI/VDE 2627).
- Measuring force can be easily set and compensation of thermally induced dimensional deviations switched on and off by a software click.

Technical Data:

Technical Data:

Control:

[CNC](#)

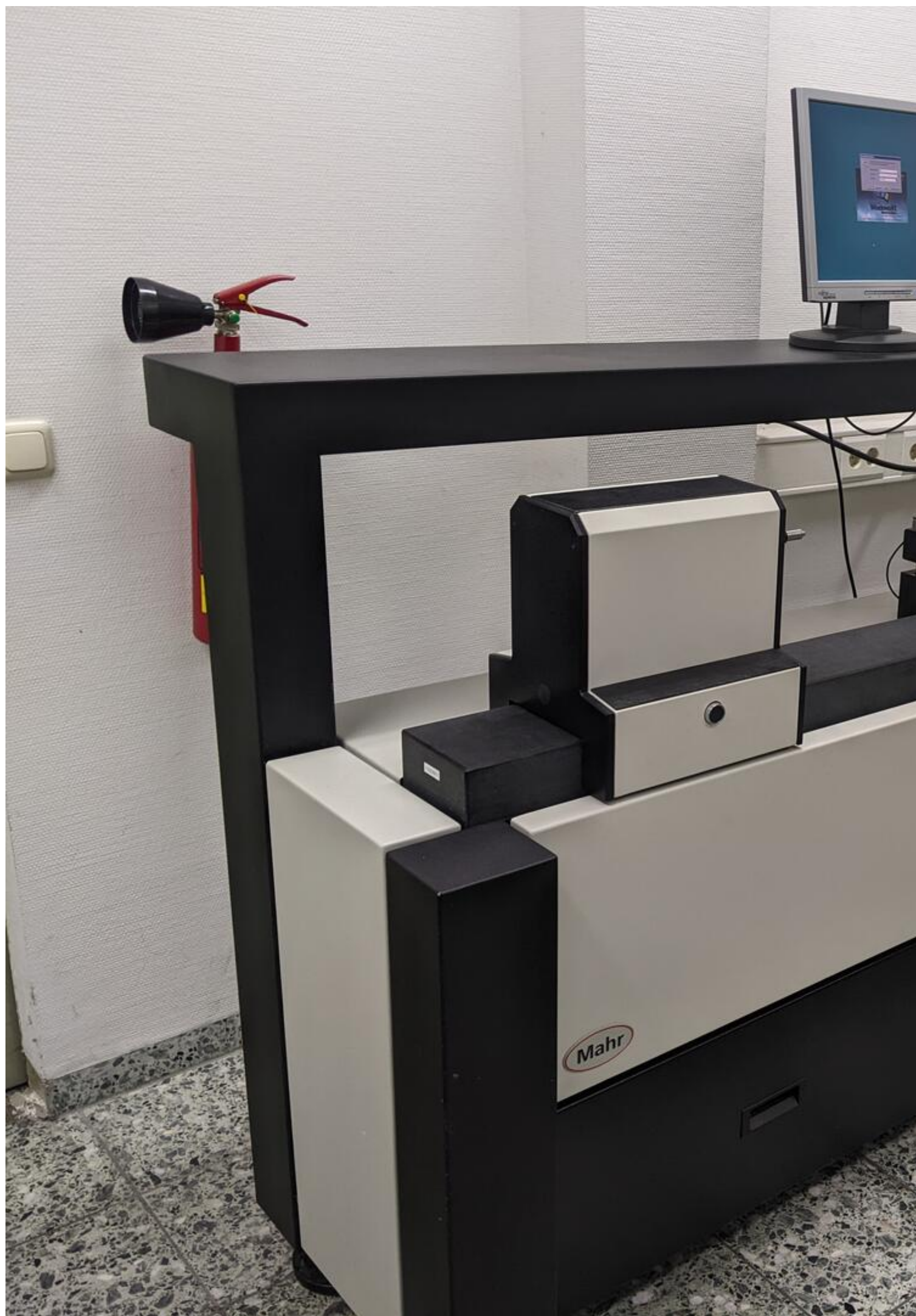
Dimensions and Weight:

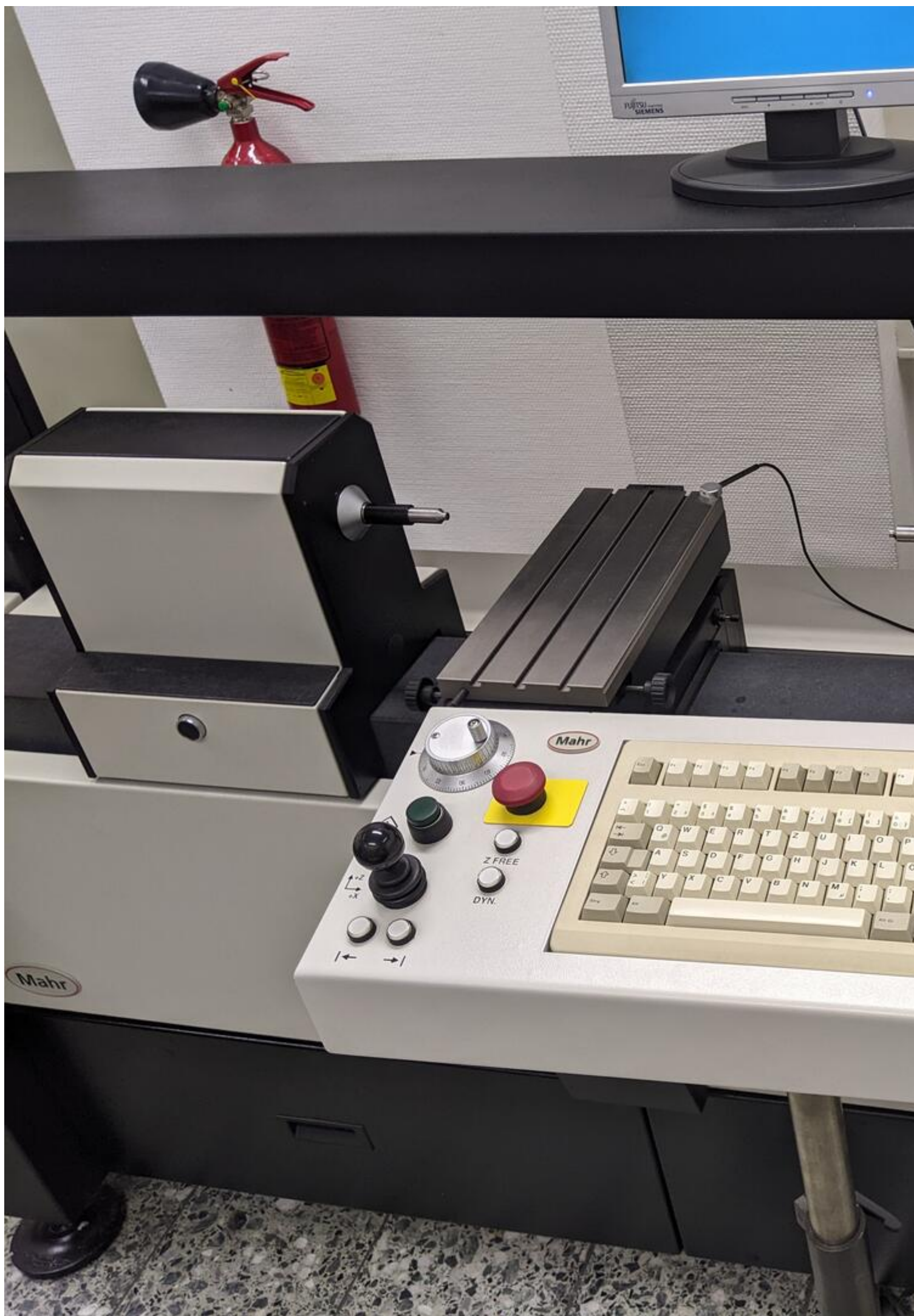
Height:
1.700 mm
Length:
2.500 mm
Width:
700 mm
Weight:
840 kg

Buyer Information:

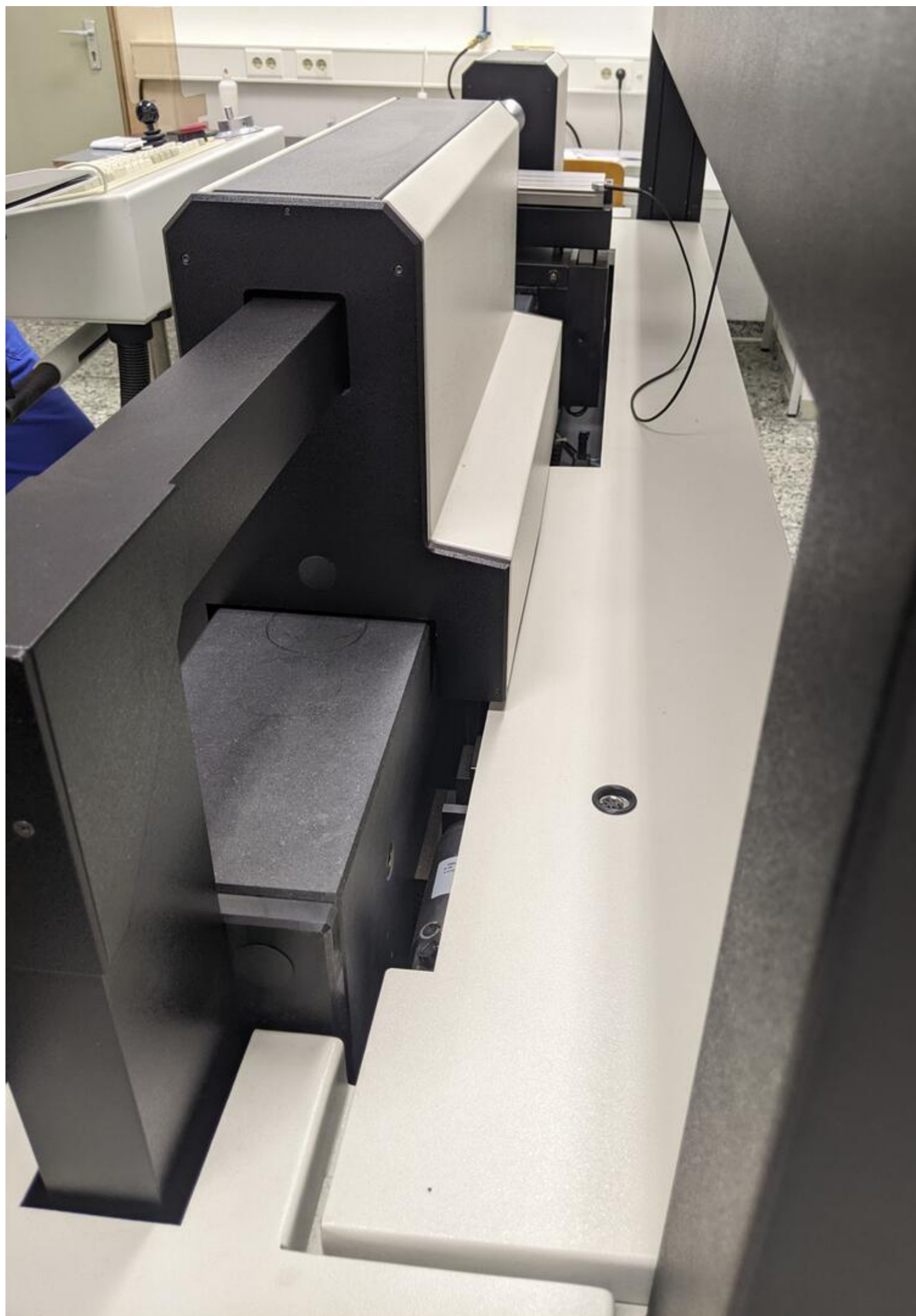
Condition:
[Very good condition](#)
Available:
[Sold](#)
Sold as:
[EXW \(Ex Works - Incoterm\)](#)
VAT:
[19 %](#)
Buyers Premium:
[18 %](#)
Location:
Germany

Images:





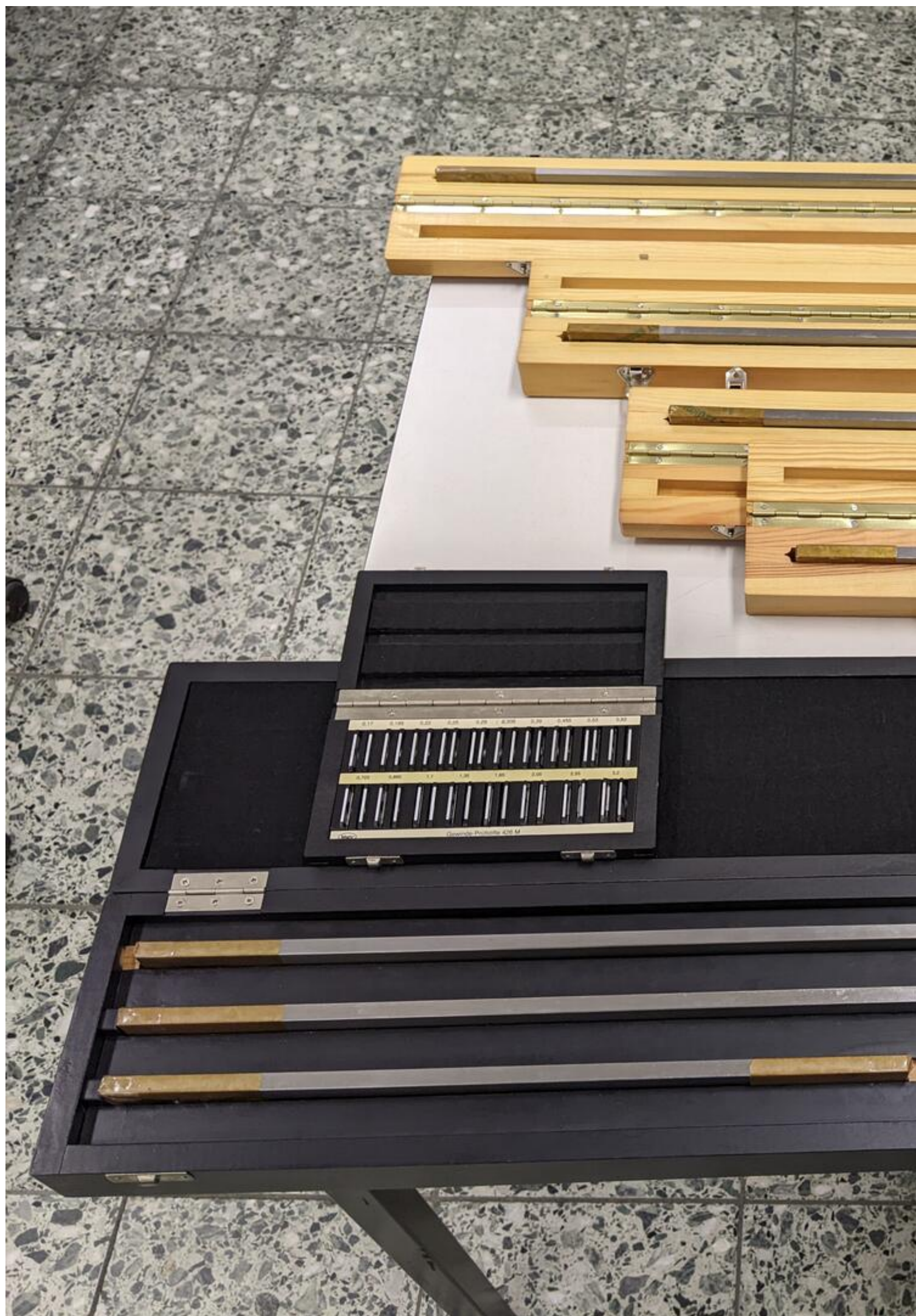


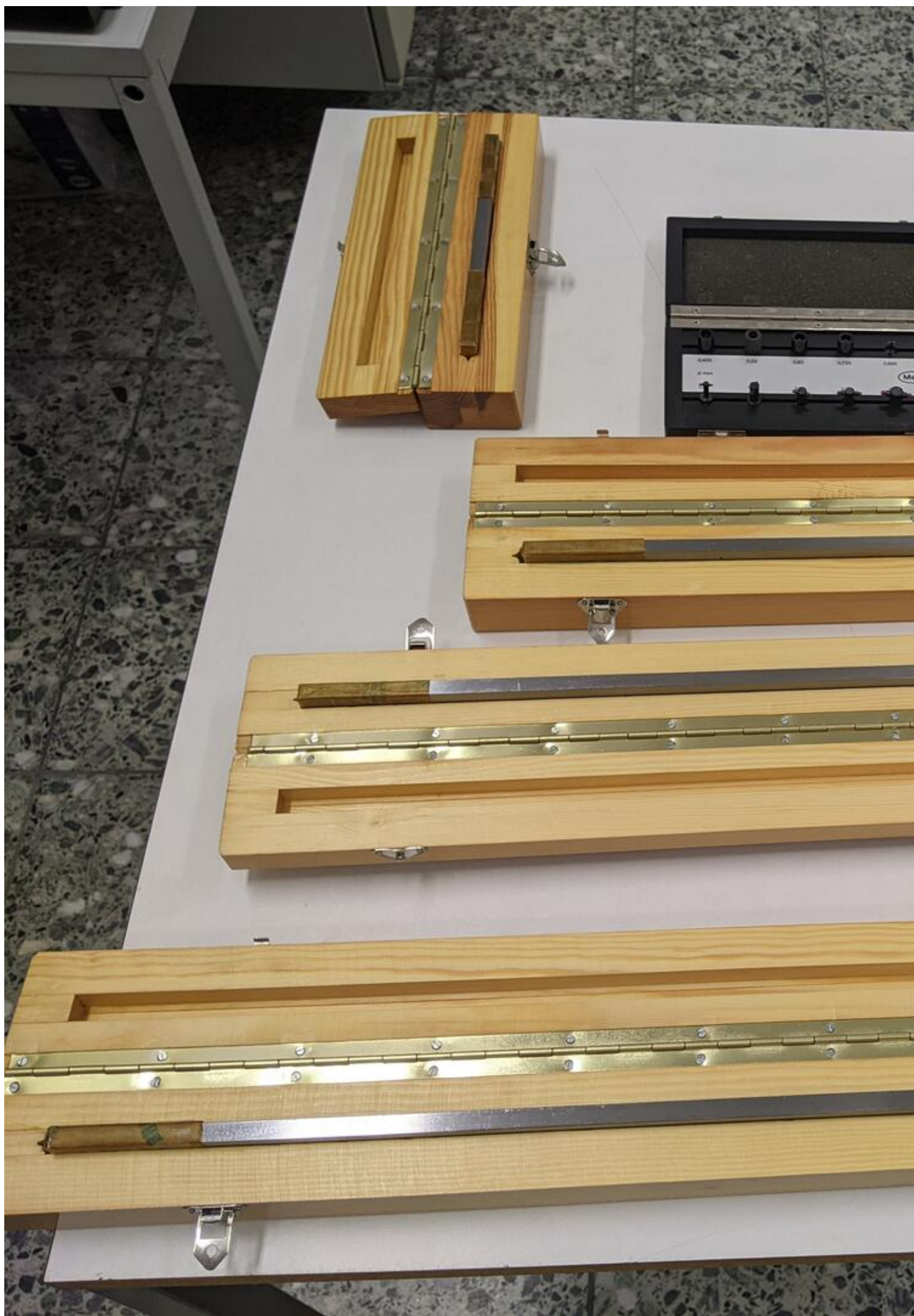






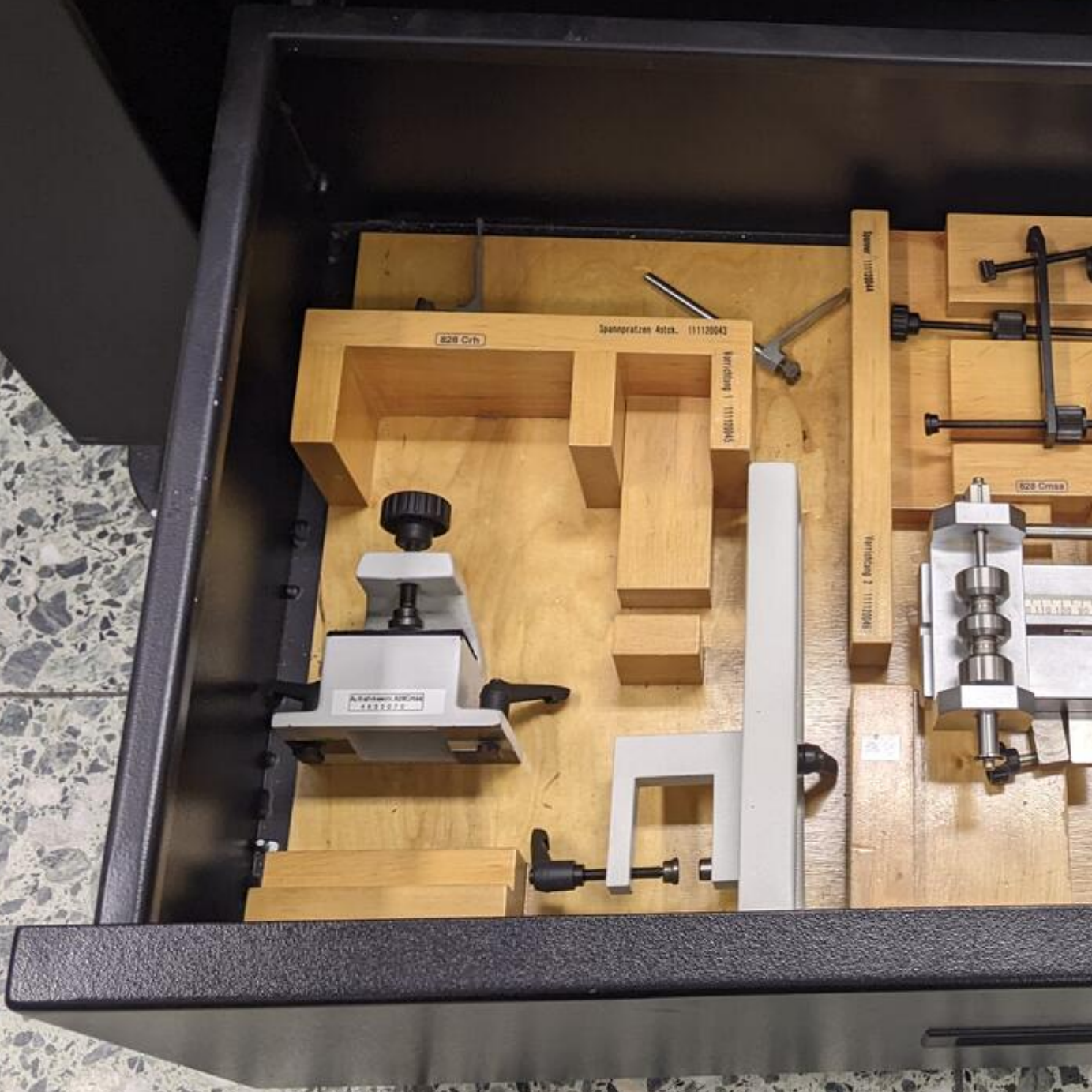




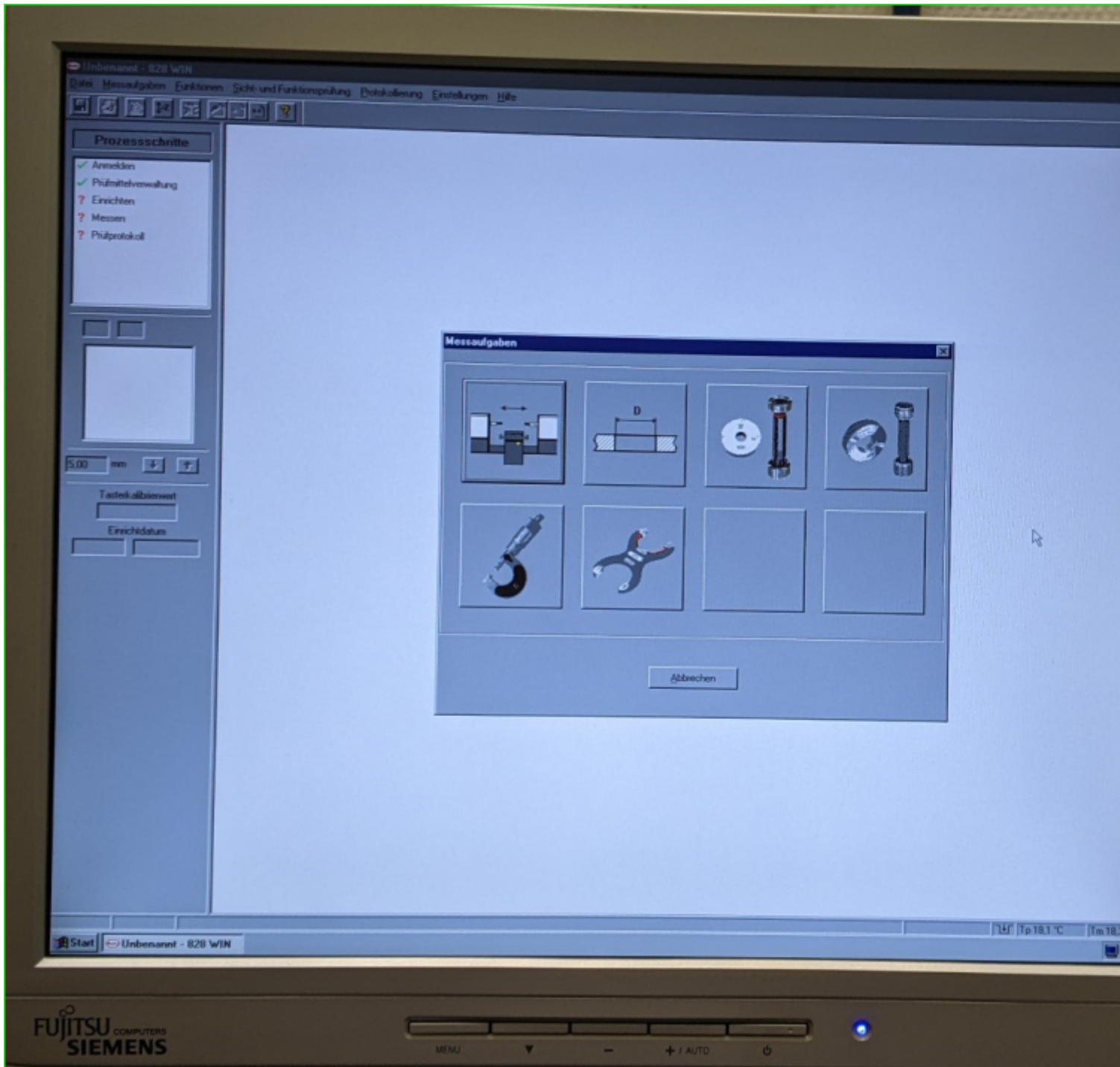




Mahr

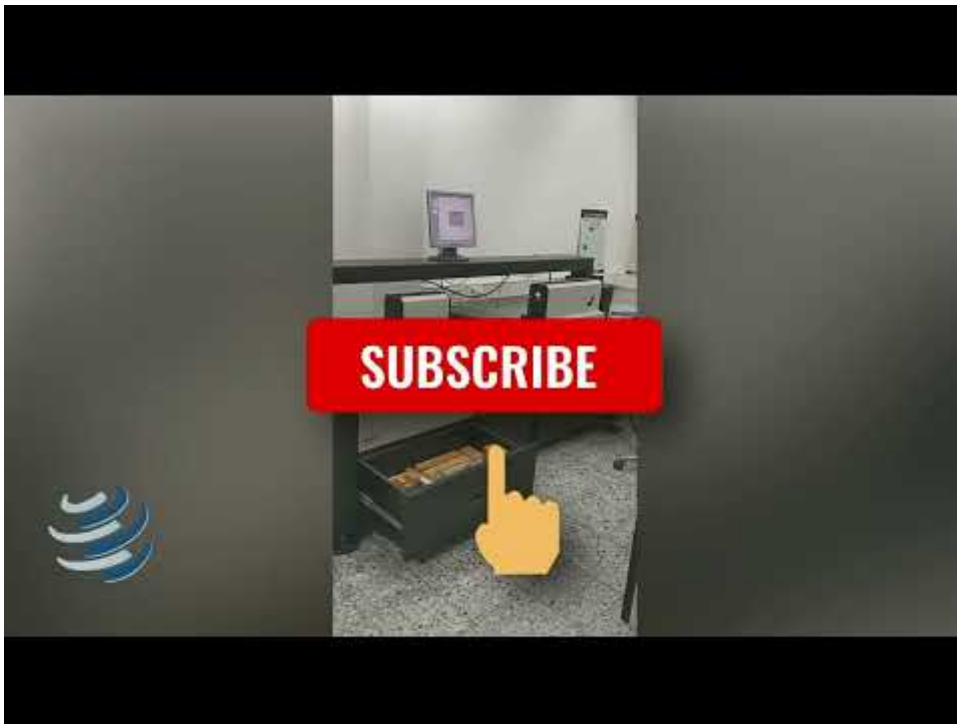


11



12

Video:



Asset-Trade

Assessment and Sale of Used Assets world wide

Am Sonnenhof 16

47800 Krefeld

Germany

Tel.: +49 2151 32500 33

Fax.: +49 2151 65 29 22

Email: info@asset-trade.de

Web.: <https://mail.asset-trade.de/en>

Ref. No.:
1332-0809200

Overview and Technical Data:

MAHR 828 CIM -1000 Precision Universal Length Measuring Machine

MAHR



Year of Build:
Jan 1997

Description:

Used MAHR 828 CiM 1000 Ultra High Precision Motorized Length Universal Measuring Machine Precimar

Build 1997

Last check : 02.2015

Software Version: 3.06-4

Technical Data:

- Measuring ranges (switchable mm/inch):
 - Measuring range for outer measurement: 0 to 1000 mm
 - Measuring range for inner measurement: 0.5 to 845 mm
- Performance data:
 - Measuring range (incremental) : 300 mm
 - Increment: 0.01 μm
 - Measuring uncertainty MPEE1 (L in mm) : ? (0,055 + L/1500) μm
 - Repeatability: ? 0,03 μm
 - Measuring forces (internal/external measurement) : 0 to 13.9 N elec. monitoring
- Guides
 - Drive (measuring slide) aerostatic motorized
 - Max. travel speed: 50 mm/s
 - Max. contact speed with joystick: 8 mm/s
 - Max. contact speed with direction buttons: 3.5 mm/s
 - Contact speed with inductive measuring probe 1320/1 : 0.6 mm/s
- Object table:
 - Table surface: (length x width): 150 X 350 mm
 - Table load capacity: 250N
 - Vertical movement of Z-drive: 70 mm motorized
 - Increment Z: 0.01 mm
 - Transverse movement Y: 25 mm
 - Floating movement X: ± 10 mm
 - Tilting movement Y : 3 degrees
 - Swivel movement Z : 8 degrees
 - Probe height (above lowest table position): 70 mm

Mahr 828 CIM 1000 has the highest measuring accuracy:

- Unique low length measuring uncertainty for precision products and gage calibration management
- 100% adherence to the comparator principle according to Ernst Abbe
- Online temperature monitoring
- Software-supported measuring force generation, especially advantageous for thin-walled workpieces and gage calibration devices
- Semi-automatic bore measurement and inside measurement

- High flexibility in the application range
- Numerous accessory sets and components in a modular system to solve different measuring tasks, incl. thread pitch, thread, tapered thread, toothing
- Measuring and evaluation software under MS-Windows, 828 WIN
- Patented measuring procedure
- Minimum measuring uncertainty due to the use of aerostatic guides for all slides supported by the machine bed, the mobile bearing of the measuring spindle over a spring parallelogram which is free of both play and friction, electronic regulation of measuring forces and automatic contacting. Subjective influences are therefore minimized and unintentional collisions with the testpiece prevented

The motorized CIM series enables a user-friendly, fast and reliable measurement of testing devices and precision products with the smallest measuring uncertainty possible.

Length measuring deviation:

$$\text{MPEE1} = (0.055 + L/1500) \text{ } \mu\text{m} \text{ (L in mm)}$$

Its unusually high measuring precision, the high measuring speed, novel measuring procedure and its operating comfort assure the 828 CiM its top position amongst the universal measuring machines

Mahr 828 CiM Length Measuring Machine Features:

- Superb performance data, measuring runs of unique perfection and high-quality computer technology allow quality management that far exceeds the EN 29 000... and ISO 9000 guidelines. The motorized CiM 500 and 1000 allow user-friendly, fast, reliable measurement with uniquely low measuring uncertainty.
- Operation is simplified through position-controlled driving of the measuring slide (by joystick) with progressive deflection characteristic, automatic contact detection, automatic recognition of outside and inside measurements, and computer-aided detection of reversing points.
- Immense savings in time through high measuring slide travel speeds and motor-driven vertical movement of the support table.
- Almost unlimited application flexibility due to the software supported possibility to measure the testing devices which are most often used in practice.
- Machine control, data recording, processing, logging and transfer using powerful, menu-driven software.
- Minimum measuring uncertainty due to the use of bearings for all slides supported by the machine bed; the support of the measuring spindle over a spring parallelogram which is free of both play and friction; electronic regulation of measuring forces and automatic contacting. These factors allow subjective influences to be minimized and unintentional collisions with the testpiece prevented.
- Highest measuring certainty due to single-level measuring value generation, exact compliance to the Abbé comparator principle, high-grade incremental path control system. Correction of systematic deviations and reduction of random deviations all result in a measuring uncertainty MPE of $(0.055 + L/1500) \text{ } \mu\text{m}$ (L in mm). (At 20.0 °C in inspection room, class 1 VDI/VDE 2627).
- Measuring force can be easily set and compensation of thermally induced dimensional deviations switched on and off by a software click.

Technical Data:

Technical Data:

Control:

[CNC](#)

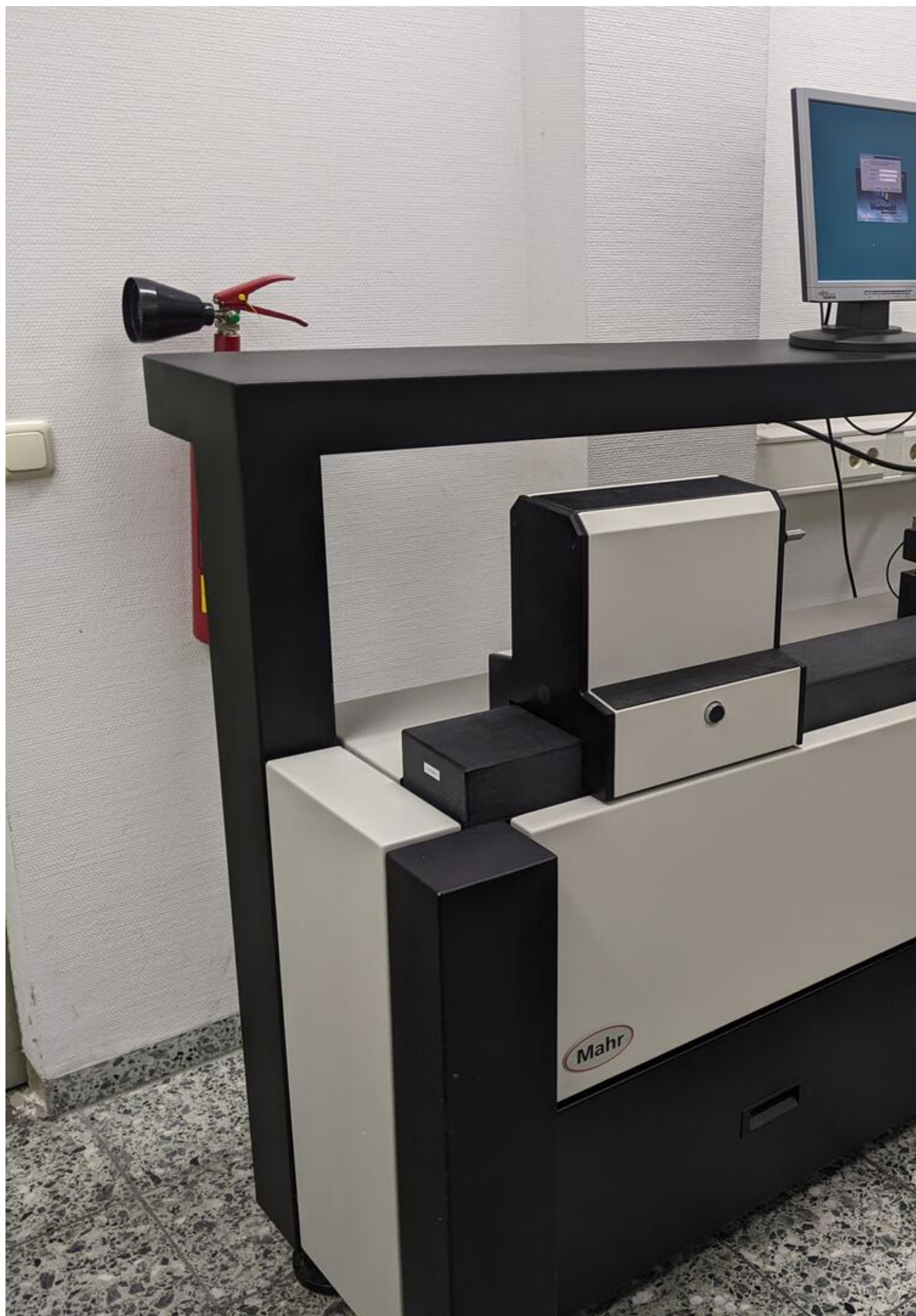
Dimensions and Weight:

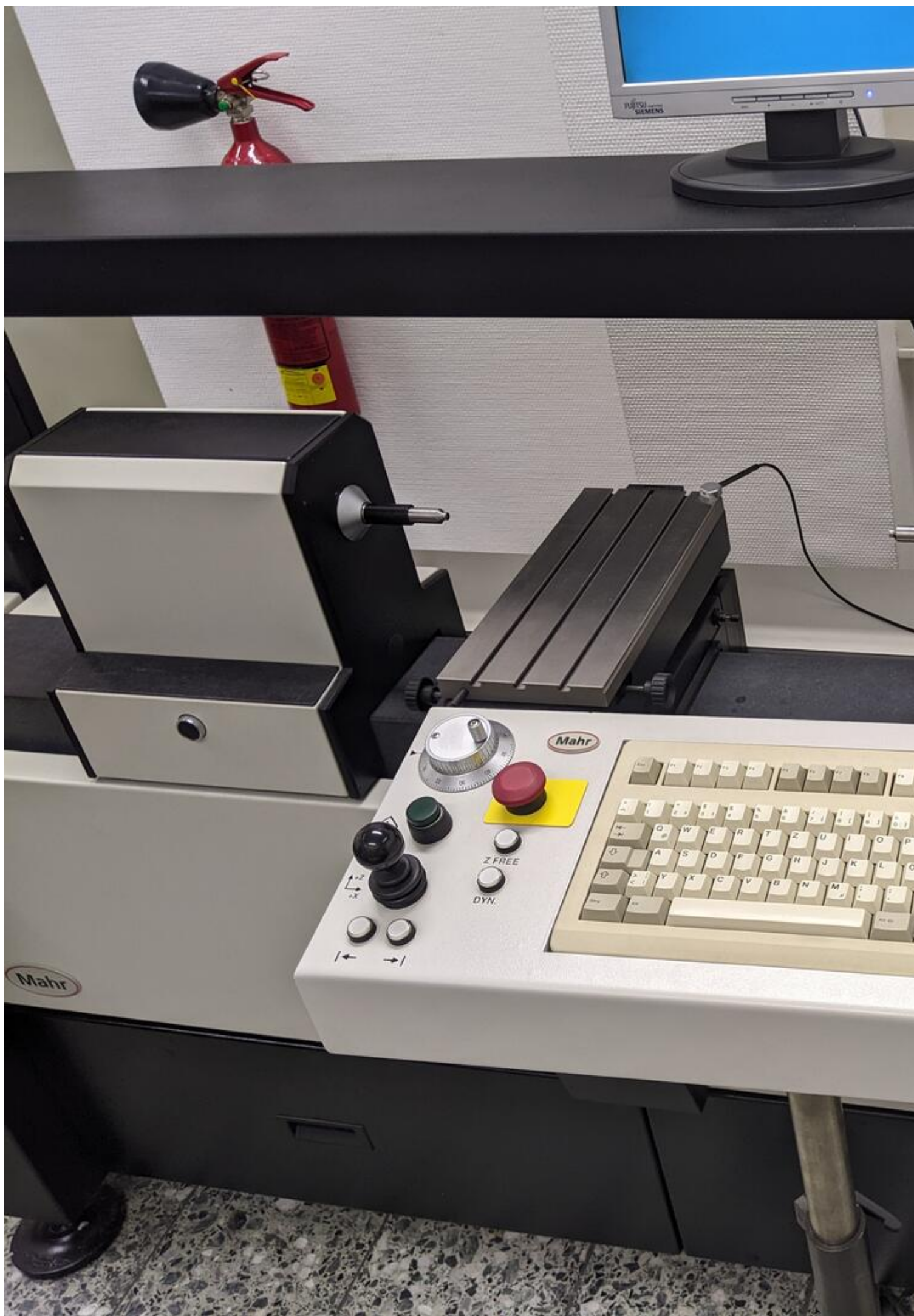
Height:
1.700 mm
Length:
2.500 mm
Width:
700 mm
Weight:
840 kg

Buyer Information:

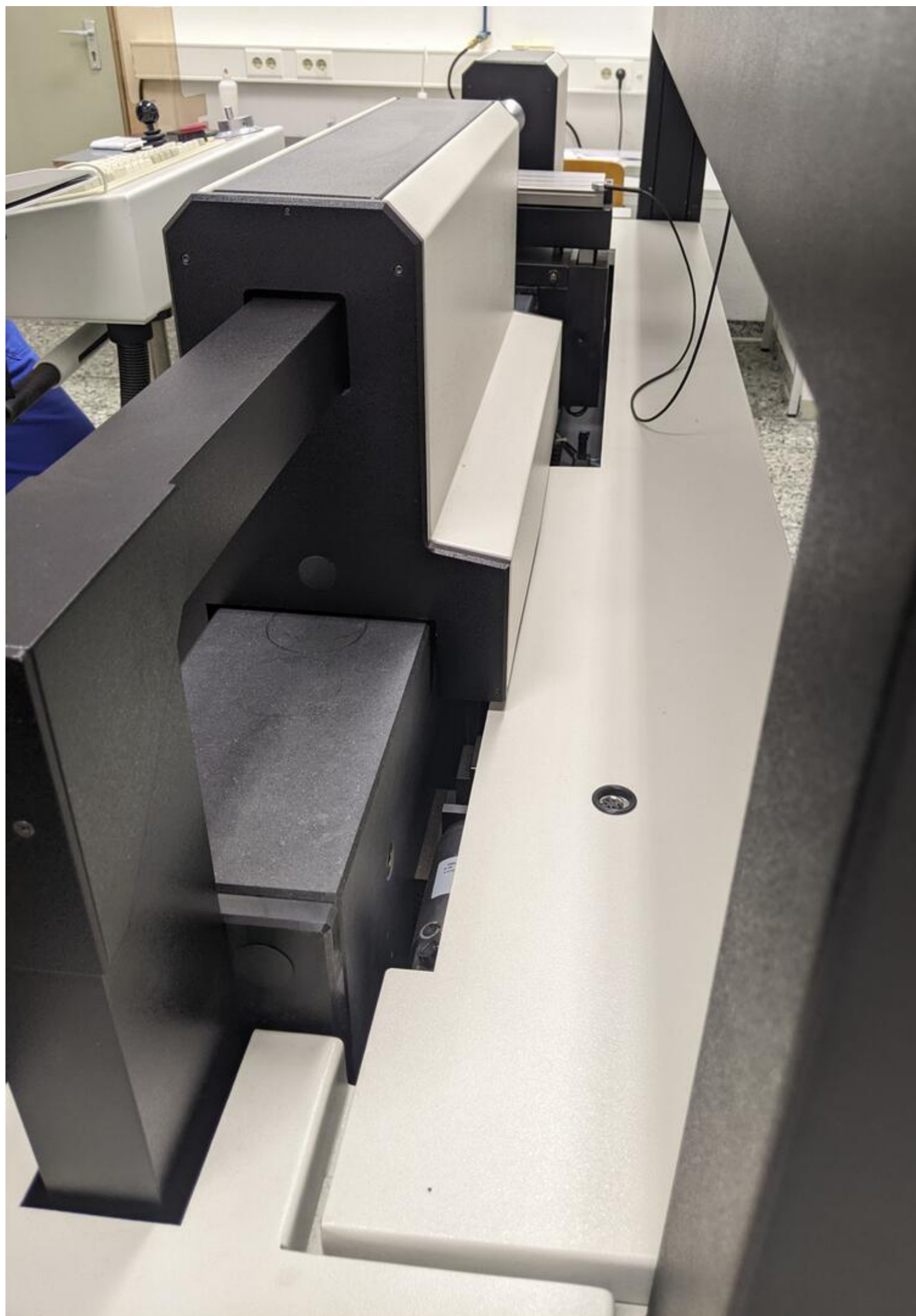
Condition:
[Very good condition](#)
Available:
[Sold](#)
Sold as:
[EXW \(Ex Works - Incoterm\)](#)
VAT:
[19 %](#)
Buyers Premium:
[18 %](#)
Location:
Germany

Images:





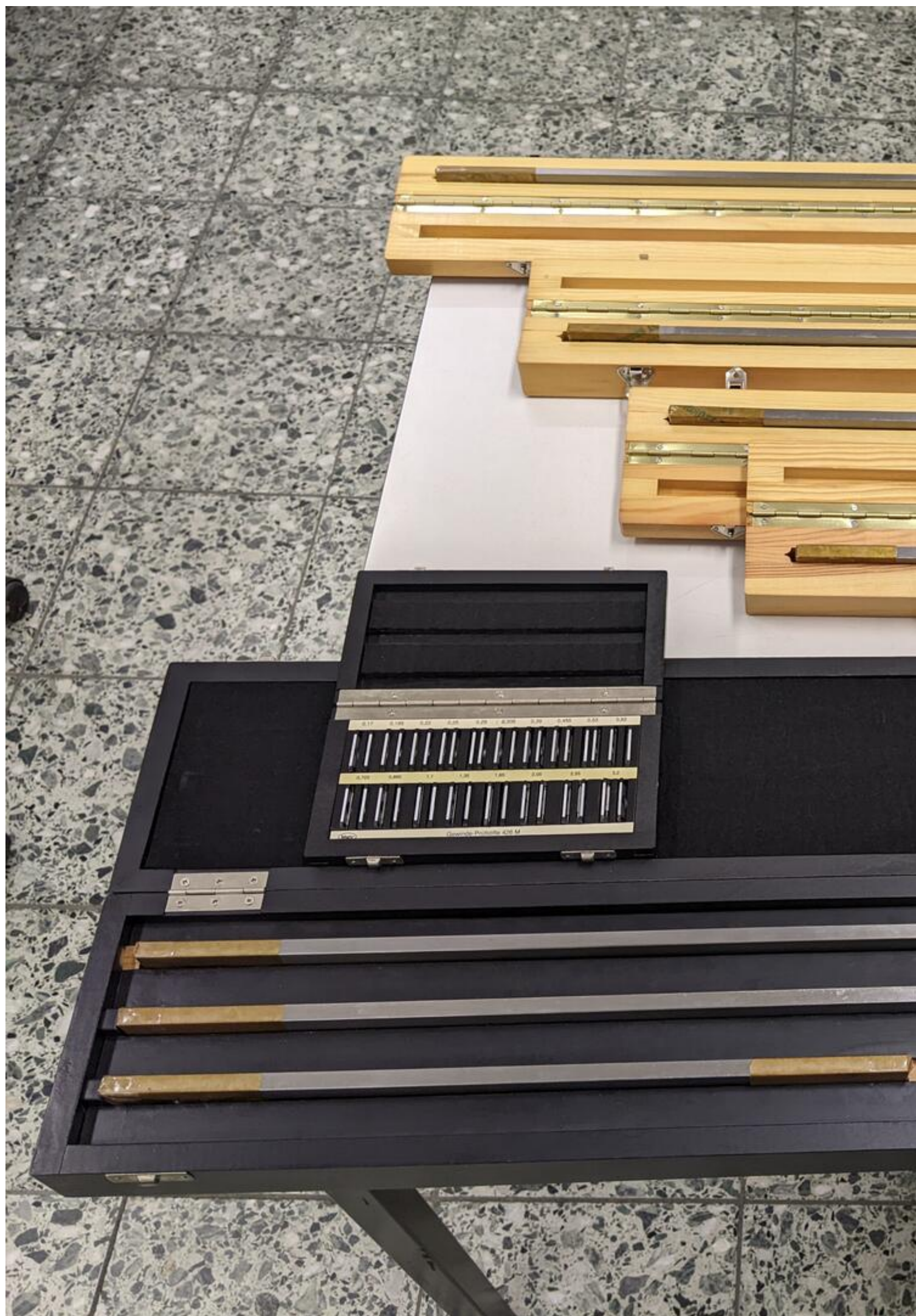


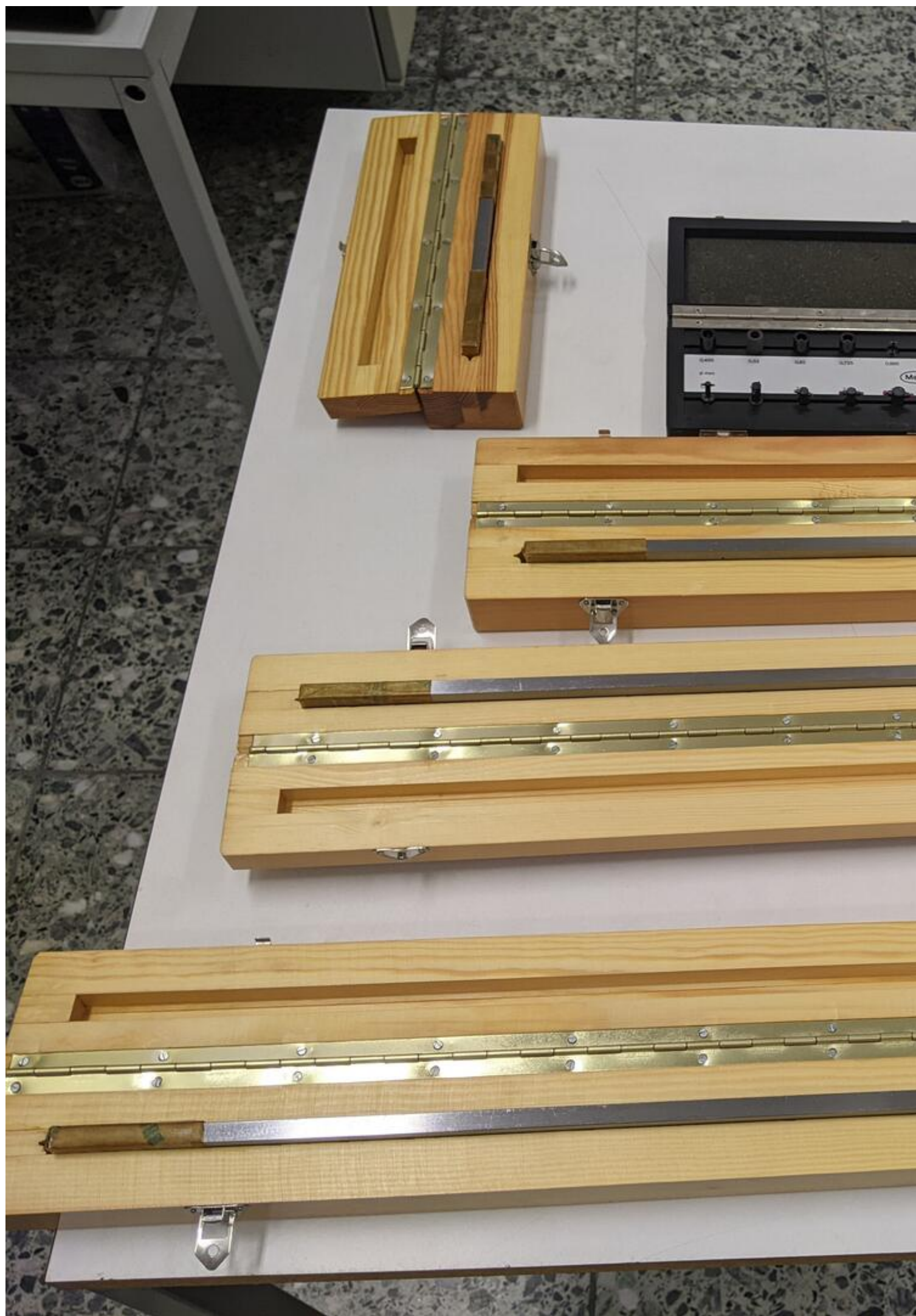






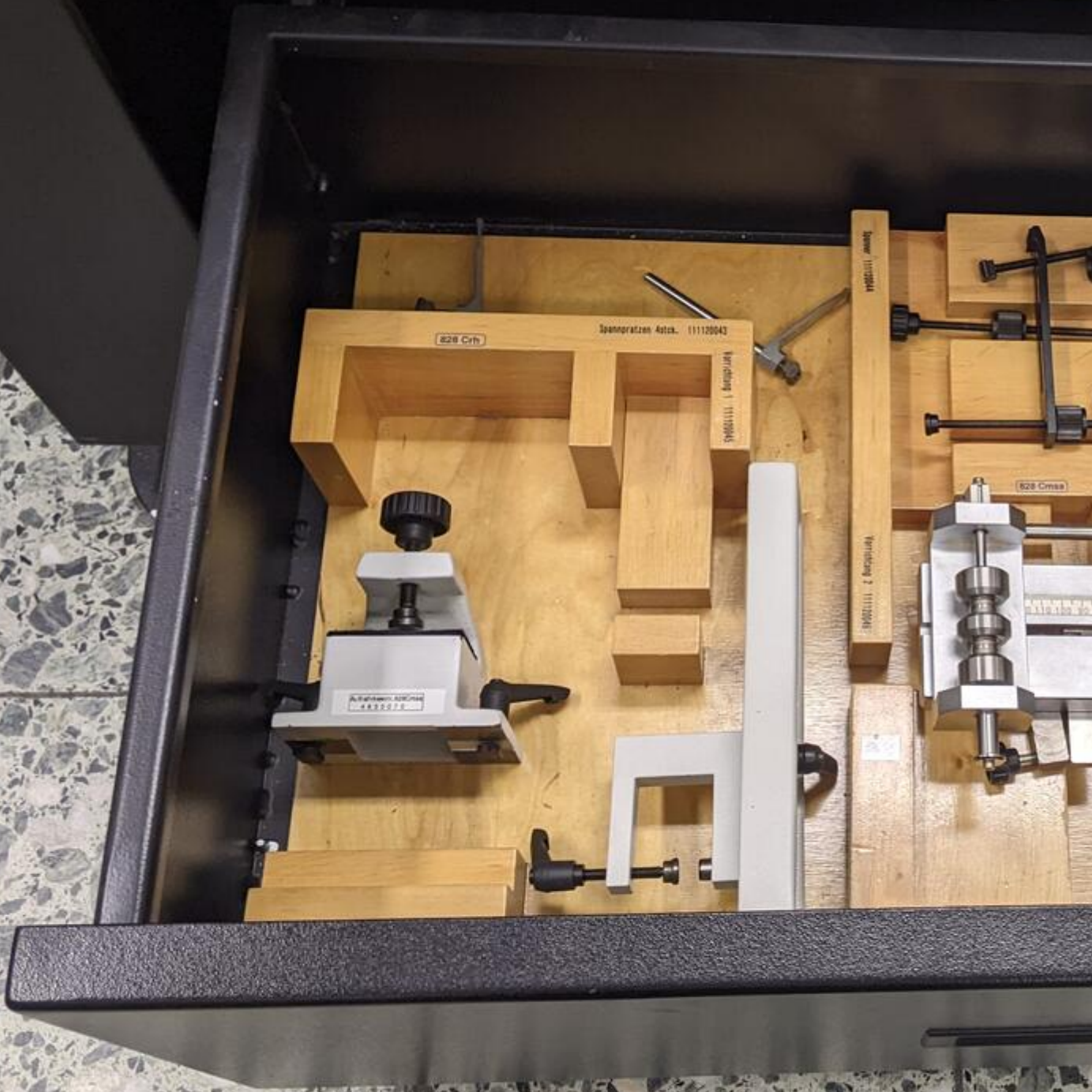




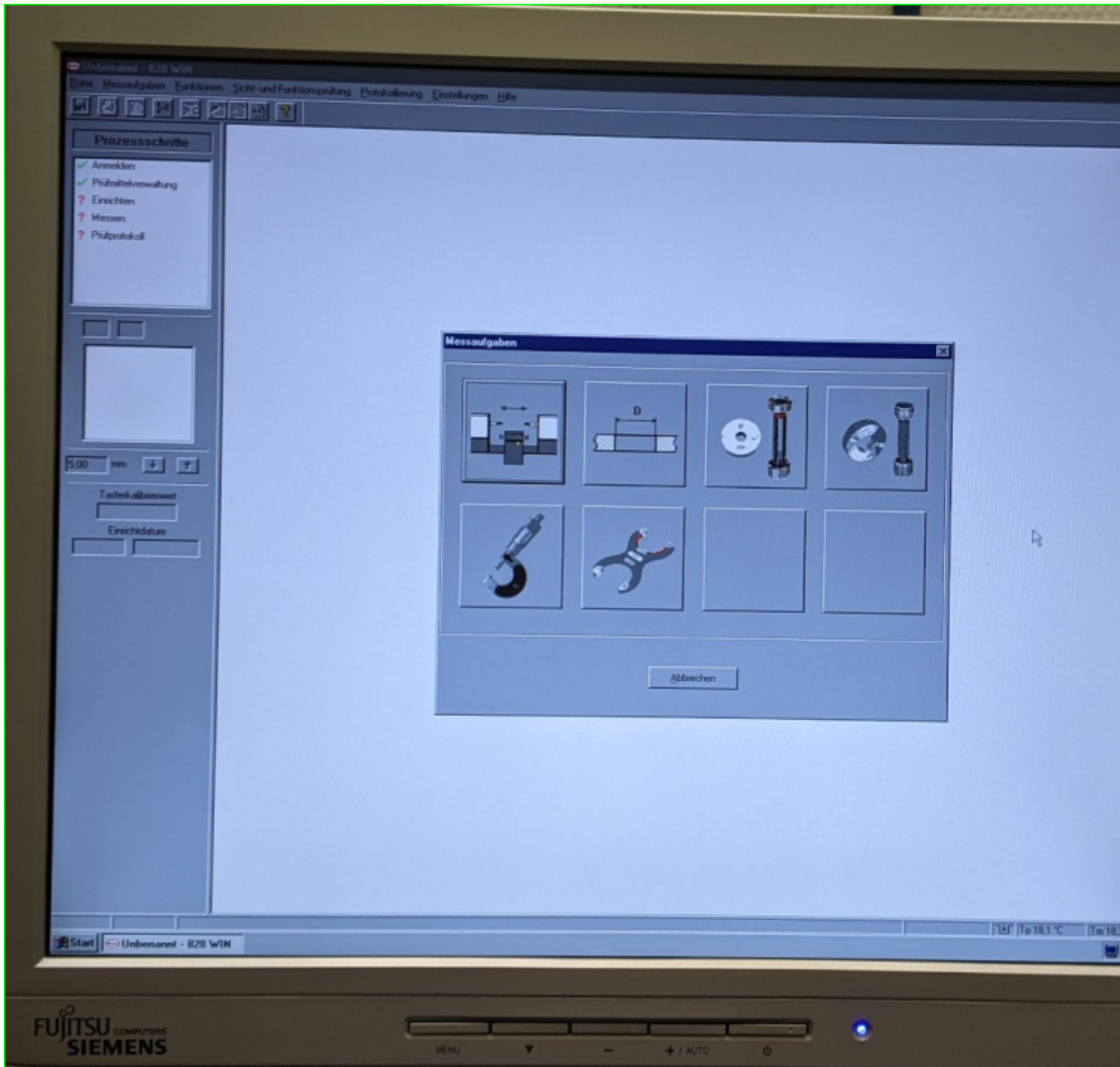




Mahr

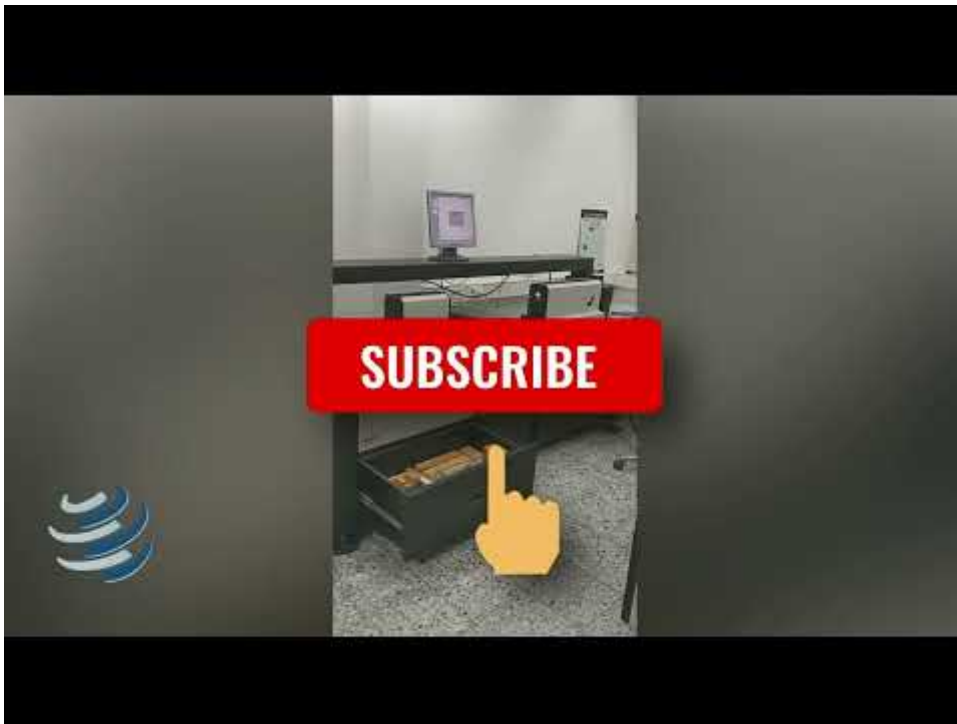


11



12

Video:



Asset-Trade

Assessment and Sale of Used Assets world wide

Am Sonnenhof 16

47800 Krefeld

Germany

Tel.: +49 2151 32500 33

Fax.: +49 2151 65 29 22

Email: info@asset-trade.de

Web.: <https://mail.asset-trade.de/en>

Generated on 16.02.2026

© Copyright 2026 - [Asset-Trade](#)

Page