



# Asset-Trade

Assessment & Sale of Used Assets

Ref. No.: 1308-02241000

## Overview and Technical Data:

**FRITZ MÜLLER ZE 500-28 Hydraulic press**

**FRITZ MÜLLER**

SCHULER 

Year of Build: Feb 1971

Rebuild year: Jan 1987



## Description:

### Used FRITZ MÜLLER ZE 500-28.1.1 hydraulic press with 500 tons

- Last inspection date: 07.12.2021
- Safety rebuild when done: 1987

#### Technical data:

- max. drawing ram force: 5000kN
- max drawing ram stroke: 1070 mm
- distance table- ram: 1670 mm
- distance table- ram with WWP: 1550 mm
- table area: 2750 x 1500 mm
- ram area: 2750 x 1500 mm
- clear width front side: 2990 mm
- max. off-center load:
  - from left to right: 01 mm/1m
  - from front to back: 01 mm/1m
- minimum installation height without WWP: 600 mm
- bolt diameter: 38 mm
- table drawing cushion: 1x
  - max. drawing cushion force: 140 ton
  - max. drawing cushion stroke: 300 mm
- drawing cushion area: 2100 x 900 mm
- ram cushion with ejector: 1x cushion with 105 pieces
- max. displacement force: 450 kN
- bolt diameter: 40 mm
- ejector stroke 150 mm
- inserted bolts: 10 mm setback

#### Rapid traverse speed

- Punch stroke limitation over table: 640 mm
- Punching stroke limitation over WWP: 520 mm
- Functional range of punching stroke limit 520 - 1020 mm
- T-slots: 32 /54 mm
- rapid traverse speed: 487 m/s
- max. stopping time: 216 m/s



## Technical Data:

### Technical Data:

Control: NC

### Buyer Information:

Condition: Very good condition

Available: Sold

Sold as:

EXW (Ex Works - Incoterm)

VAT: 19 %

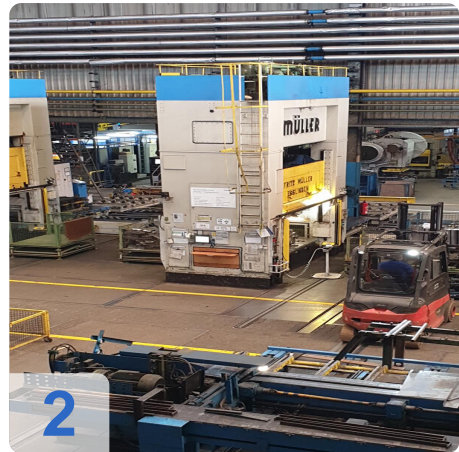
Buyers Premium: 16 %

Location: Germany





## Images:





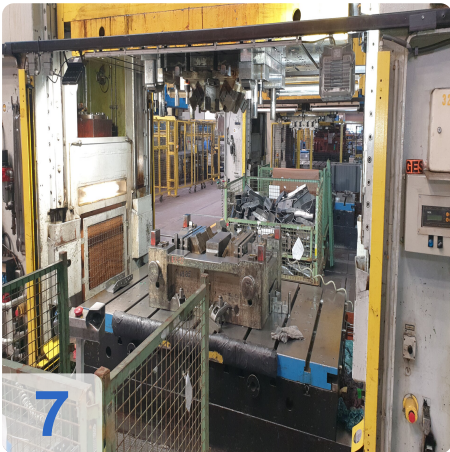
Asset-Trade

e

Assets



6



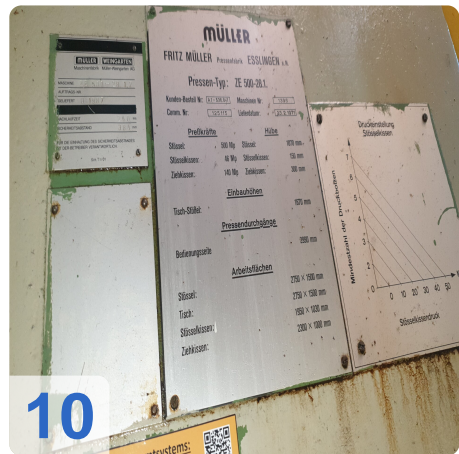
7



8



9

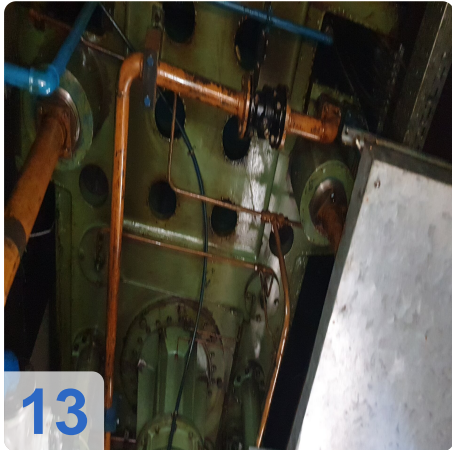


10



11



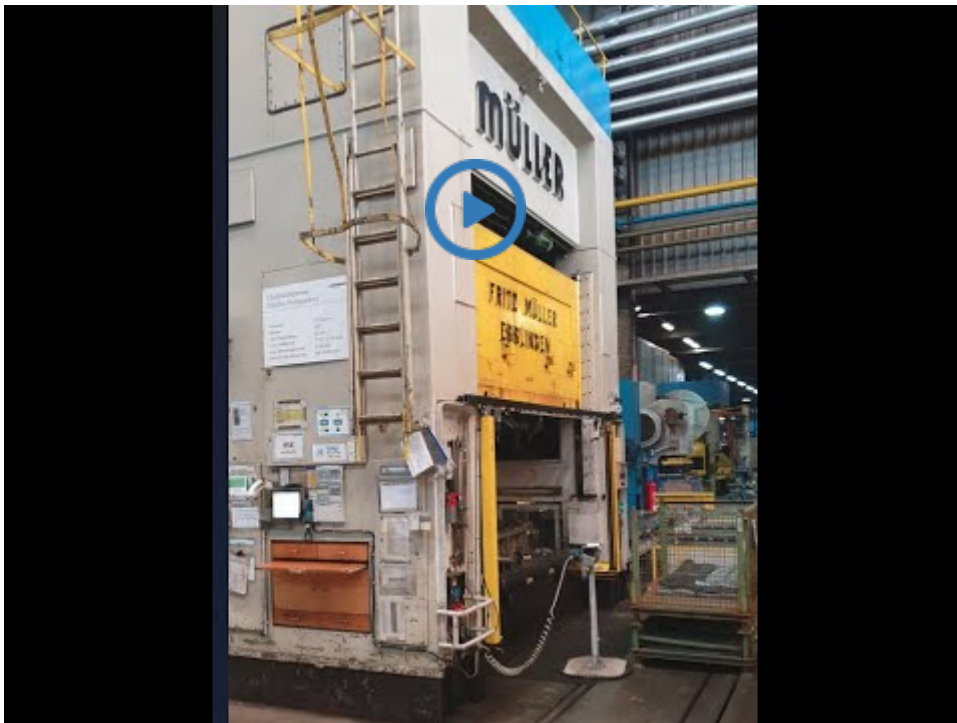




# Asset-Trade

Assessment & Sale of Used Assets

Video:





# Asset-Trade

Assessment & Sale of Used Assets



**Asset-Trade**

**Assessment and Sale of Used Assets world  
wide**

**Am Sonnenhof 16**

**47800 Krefeld**

**Germany**

**Tel.: +49 2151 32500 33**