

Image not found or type unknown



Ref. No.:  
924-06111039

## Overview and Technical Data:

# DECKEL - DMC 60S 6 axis bar milling machine

## DMG DECKEL



# DMG

Year of Build:  
Jan 2003

## Description:

## Used DECKEL MAHO DMC 60 S 6-axis bar milling machine

CNC control: Sinumerik 840D Powerline - ShopMill.

Hours at 31321 / Spindle Hours 11969

- travels
  - X: 760 mm
  - Y: 460 mm
  - Z: 560 mm
  - A axis NC rotary axis
  - B-axis NC swivel
  - Swiveling head +/-: NC
- Inner cone: HSK-A 63.
- Spindle speed: 20-12,000 revolutions per minute.
- Spindle drive: 28/19 kW

- Tool changer with 60 places.
- tailstock
- Bar loader diameter 10 to 105 mm
- Stakes length 200 - 1100 mm.
- chip conveyor
- Machine dimensions: 6 x 5 x 3 m

## **Technical Data:**

## **Technical Data:**

Control:

[SINUMERIK 840D](#)

Machine Hours:

31.321 hrs.

Spindle Hours:

11.969 hrs.

Spindle Speed:

12.000 rpm

Tool Capacity:

60 x

## **Travels:**

X-Axis:

760 mm

Y-Axis:

460mm

Z-Axis:

560 mm

## **Dimensions and Weight:**

Weight:

11.000 kg

## **Buyer Information:**

Condition:

[Very good condition](#)

Availability:

[Immediately](#)

Sold as:

[EXW \(Ex Works - Incoterm\)](#)

VAT:

[19 %](#)

Buyers Premium:

[16 %](#)

Location:

Germany

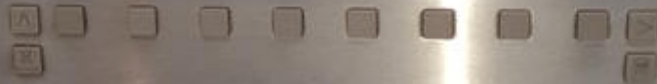
**Images:**





SIEMENS

Sinumerik 840 D *powerline*



SIEMENS







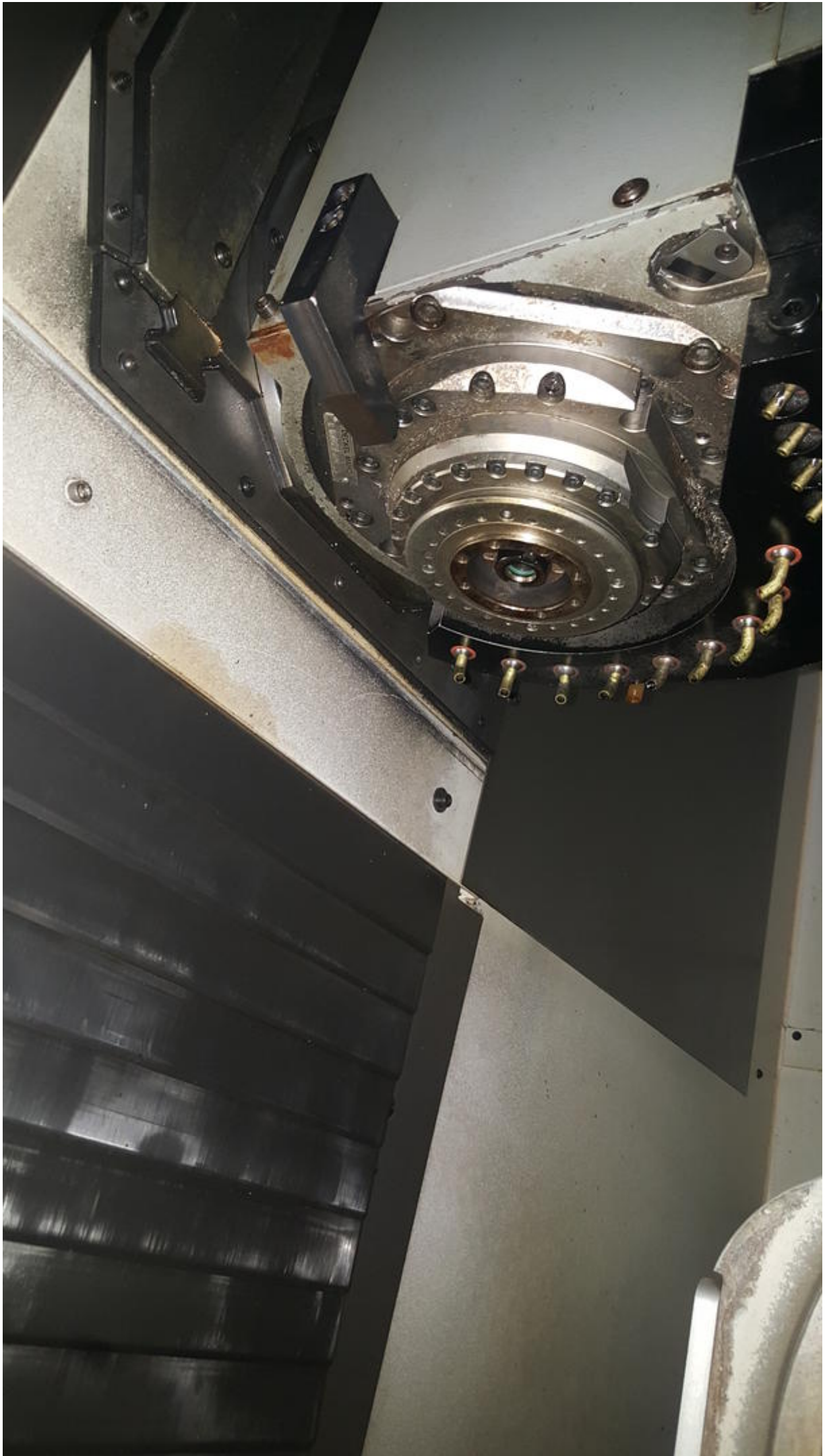


































**Inte**

**Kompakt-Filteranlage**

Filterfläche

Einfüllvolumen

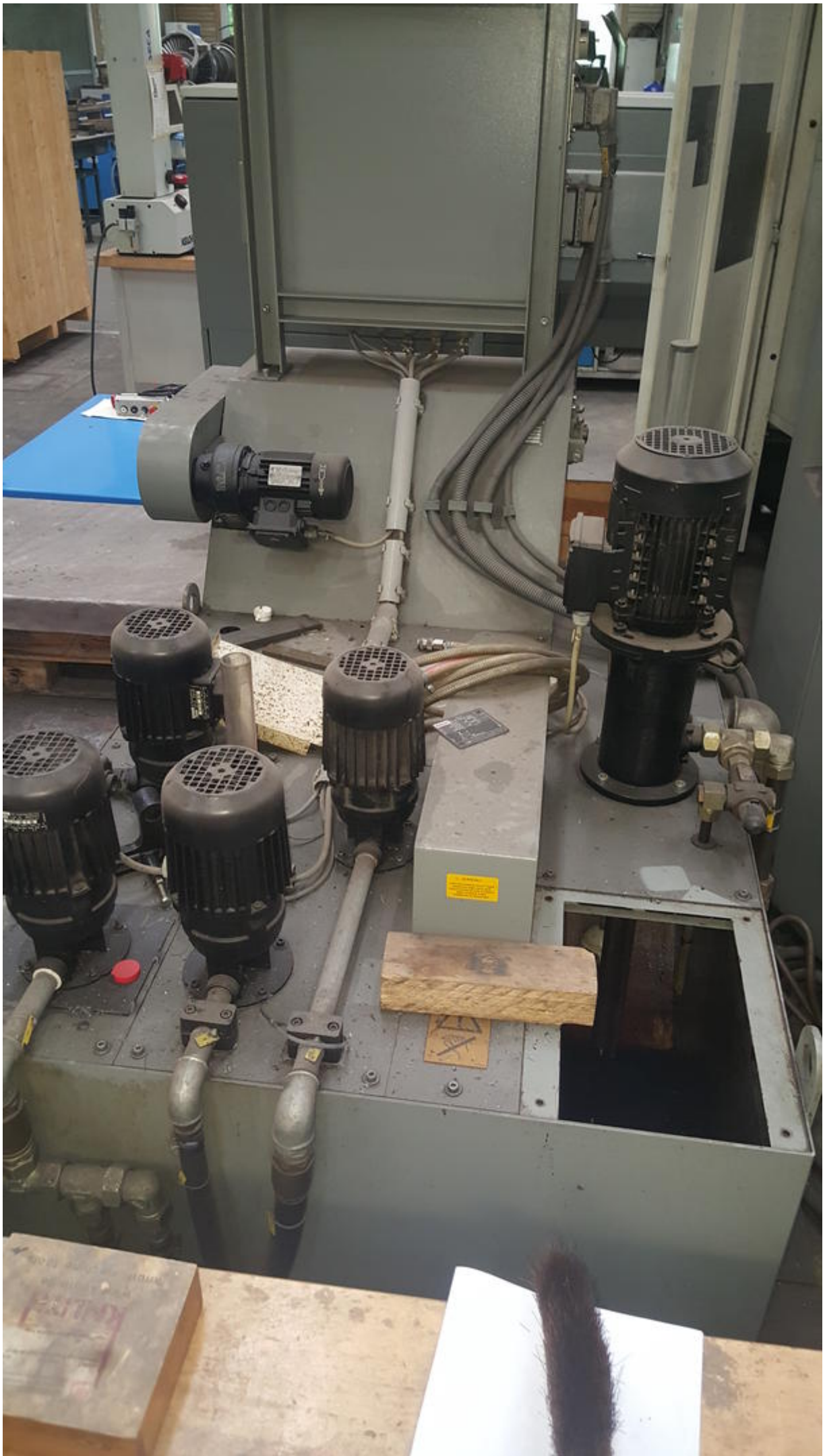
Auftrags- Nr.

Baujahr

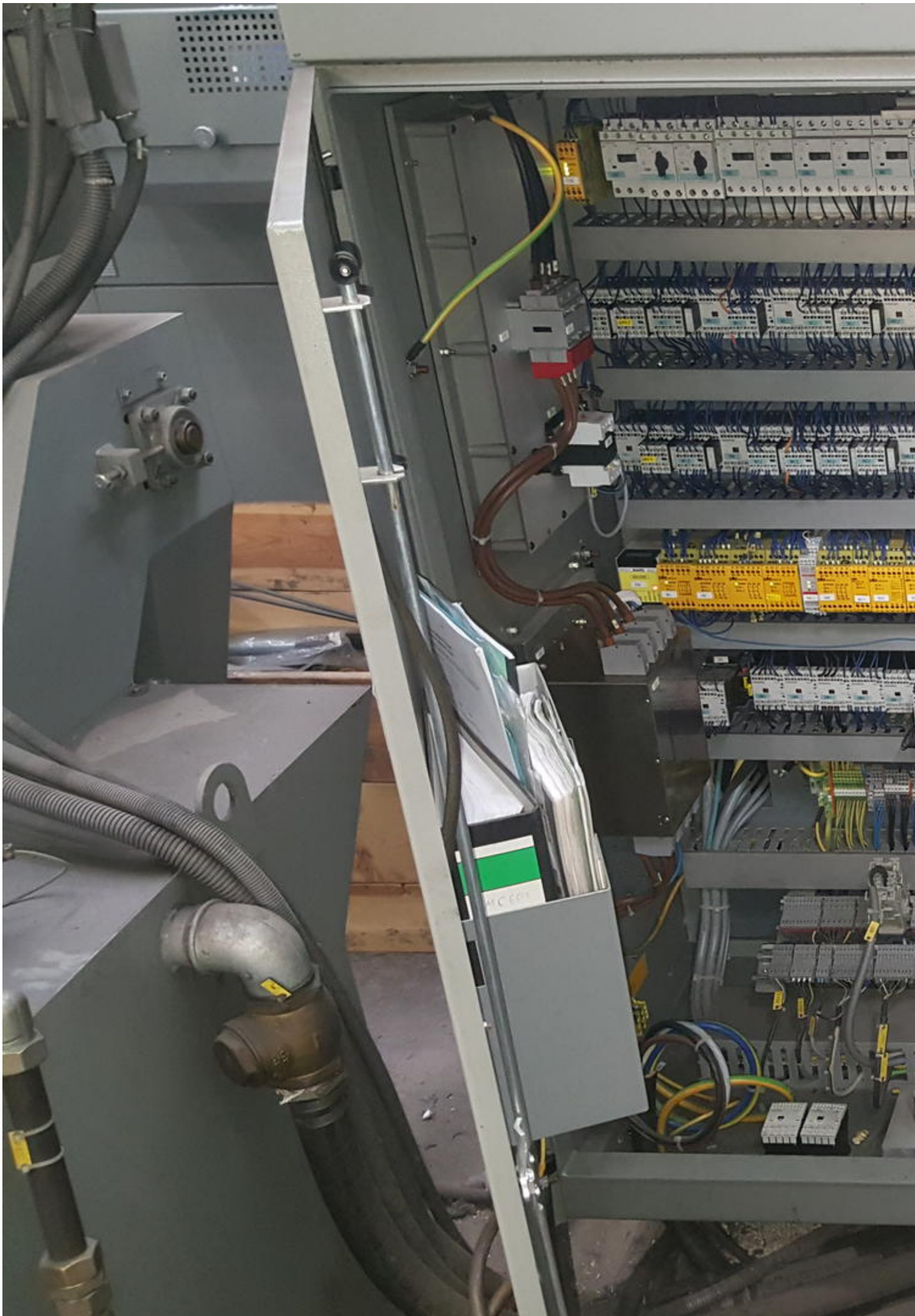
---

Interlin Jostigen GmbH Niederkasseler Str. 7 D-

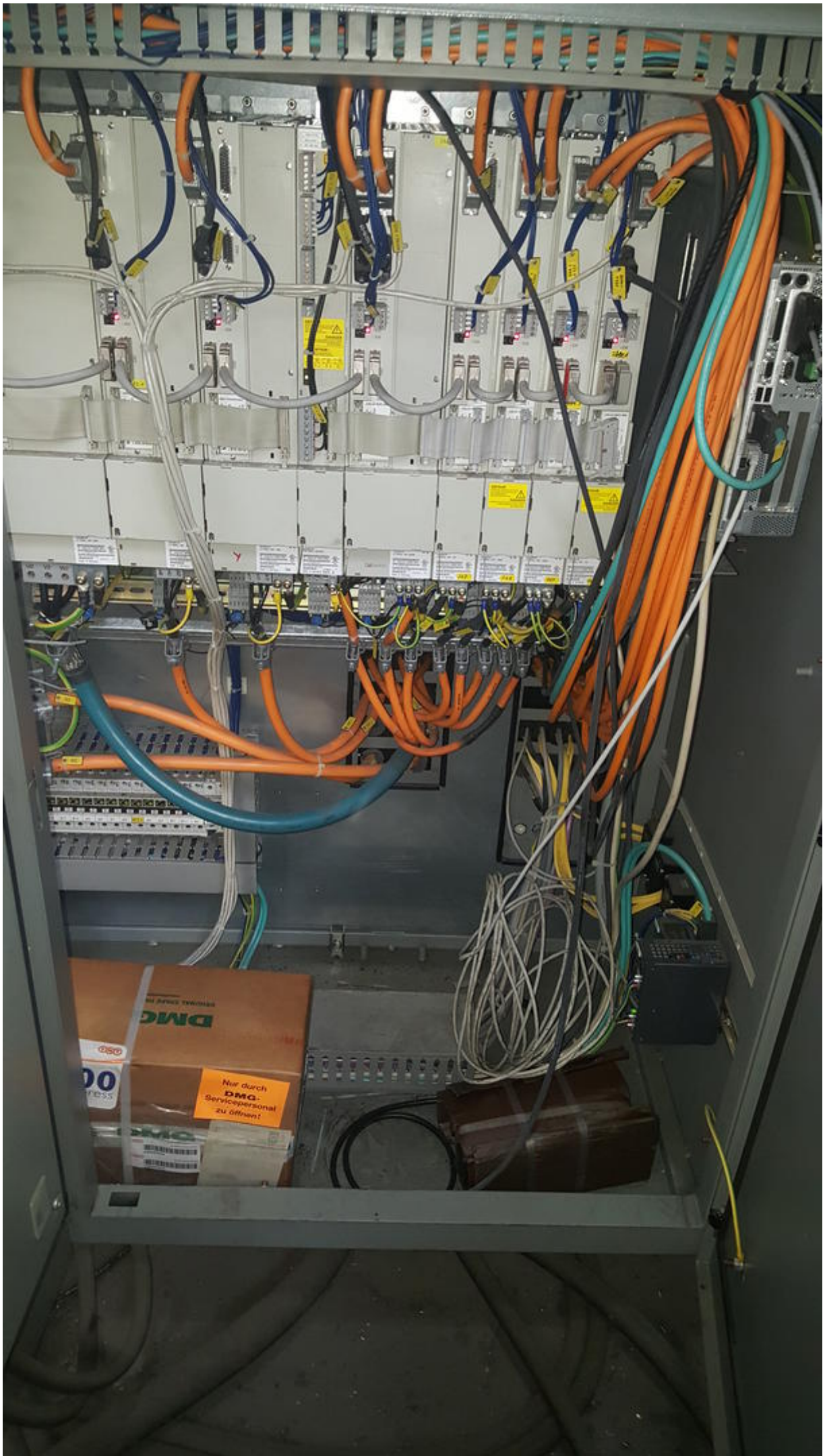








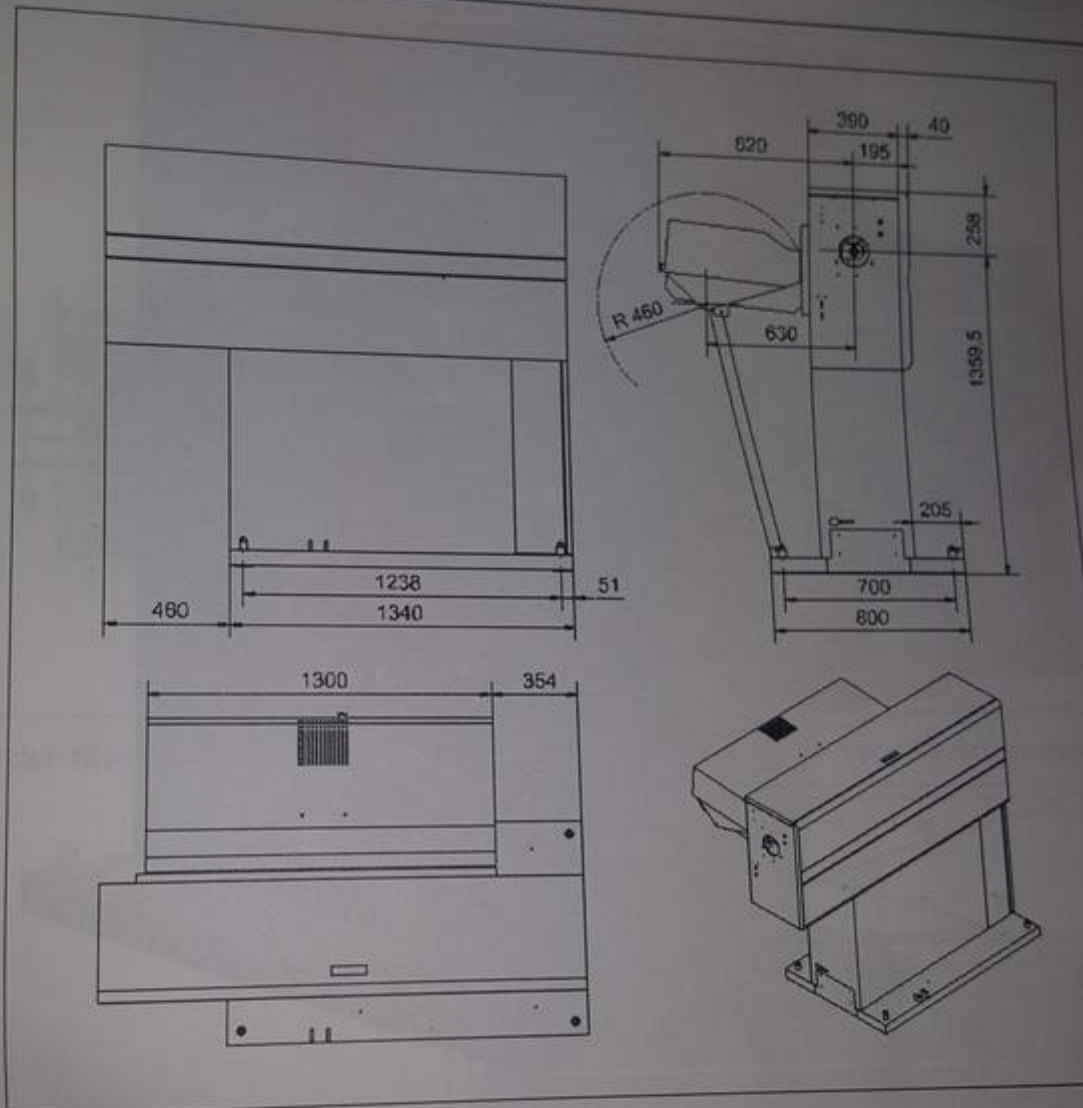






# 1 Installation des Stangenlademagazins

## 1.1 Maßzeichnung - Platzbedarf





# Geprüft

nach BGV .....

durch .....

**nächste Prüfung**





ufelfertigung  
ing services

MAHO





















SIEMENS

Inbetrieb  
nahme

CHAN1



Kanal unterbrochen



Halt: kein NC - Re

4060 ↓ : Sta

Maschinenkonfiguration

Maschinenachse

Index Name

1 X1

2 Y1

3 Z1

4 A1

DECKEL MA

Version 1.0

Schlüssel  
schalter

Bus  
Dia





















Asset-Trade

Assessment and Sale of Used Assets world wide

Am Sonnenhof 16

47800 Krefeld

Germany

Tel.: +49 2151 32500 33

Fax.: +49 2151 65 29 22

Email: [info@asset-trade.de](mailto:info@asset-trade.de)

Web.: <https://mail.asset-trade.de/en>

Ref. No.:

924-06111039

**Overview and Technical Data:**

# DECKEL - DMC 60S 6 axis bar milling machine

## DMG DECKEL

The logo for DMG, consisting of the letters 'DMG' in a bold, white, sans-serif font, set against a dark teal background.

Year of Build:  
Jan 2003

### **Description:**

## **Used DECKEL MAHO DMC 60 S 6-axis bar milling machine**

CNC control: Sinumerik 840D Powerline - ShopMill.

Hours at 31321 / Spindle Hours 11969

- travels
  - X: 760 mm
  - Y: 460 mm
  - Z: 560 mm
  - A axis NC rotary axis
  - B-axis NC swivel
  - Swiveling head +/-: NC
- Inner cone: HSK-A 63.
- Spindle speed: 20-12,000 revolutions per minute.
- Spindle drive: 28/19 kW
- Tool changer with 60 places.
- tailstock
- Bar loader diameter 10 to 105 mm
- Stakes length 200 - 1100 mm.
- chip conveyor
- Machine dimensions: 6 x 5 x 3 m

## **Technical Data:**

## **Technical Data:**

Control:

[SINUMERIK 840D](#)

Machine Hours:

31.321 hrs.

Spindle Hours:

11.969 hrs.

Spindle Speed:

12.000 rpm

Tool Capacity:

60 x

## **Travels:**

X-Axis:

760 mm

Y-Axis:

460mm

Z-Axis:

560 mm

## **Dimensions and Weight:**

Weight:

11.000 kg

## **Buyer Information:**

Condition:

[Very good condition](#)

Availability:

[Immediately](#)

Sold as:

[EXW \(Ex Works - Incoterm\)](#)

VAT:

[19 %](#)

Buyers Premium:

[16 %](#)

Location:

Germany

## **Images:**





SIEMENS

Sinumerik 840 D *powerline*



SIEMENS







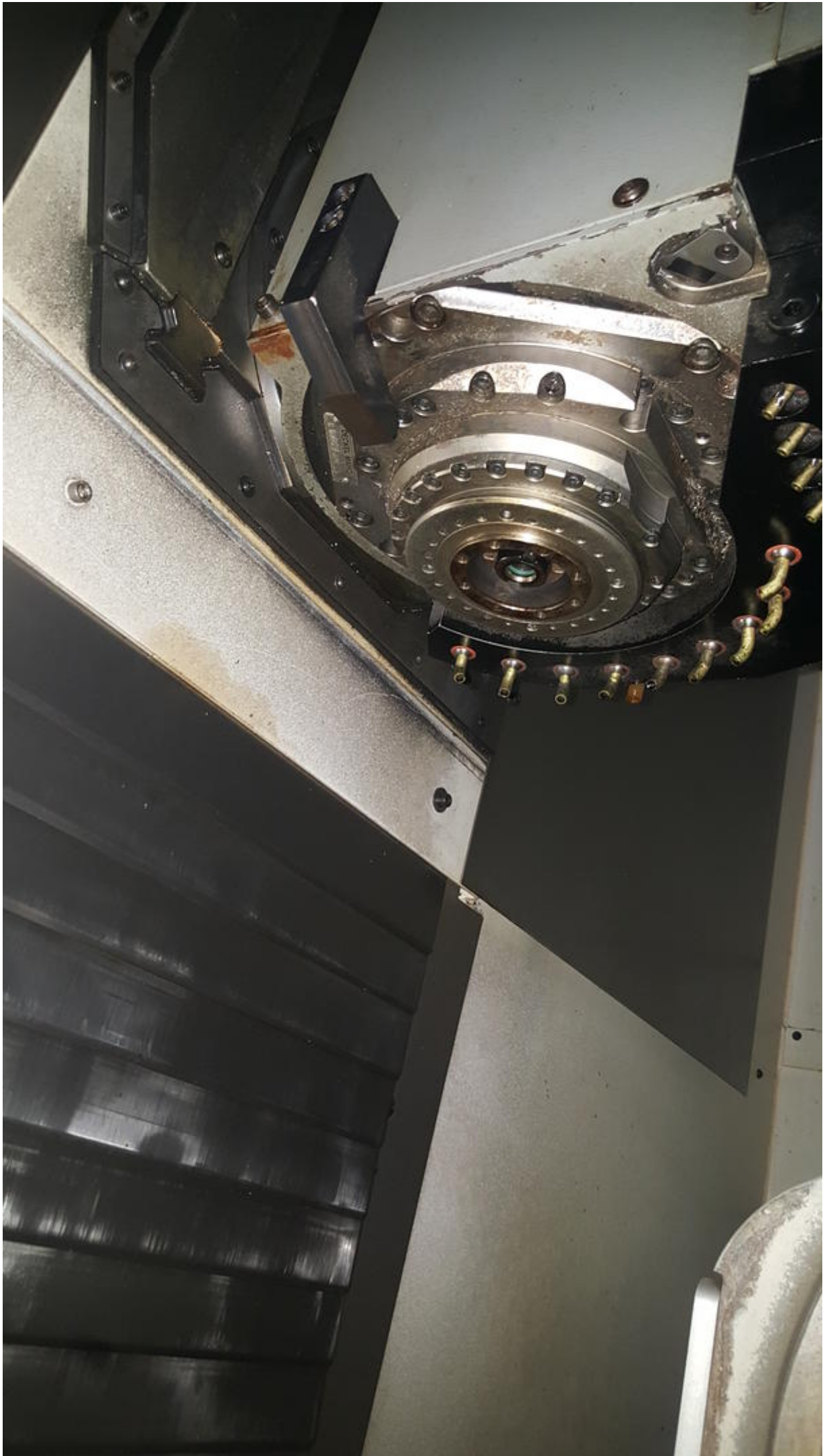


































**Inte**

**Kompakt-Filteranlage**

Filterfläche

Einfüllvolumen

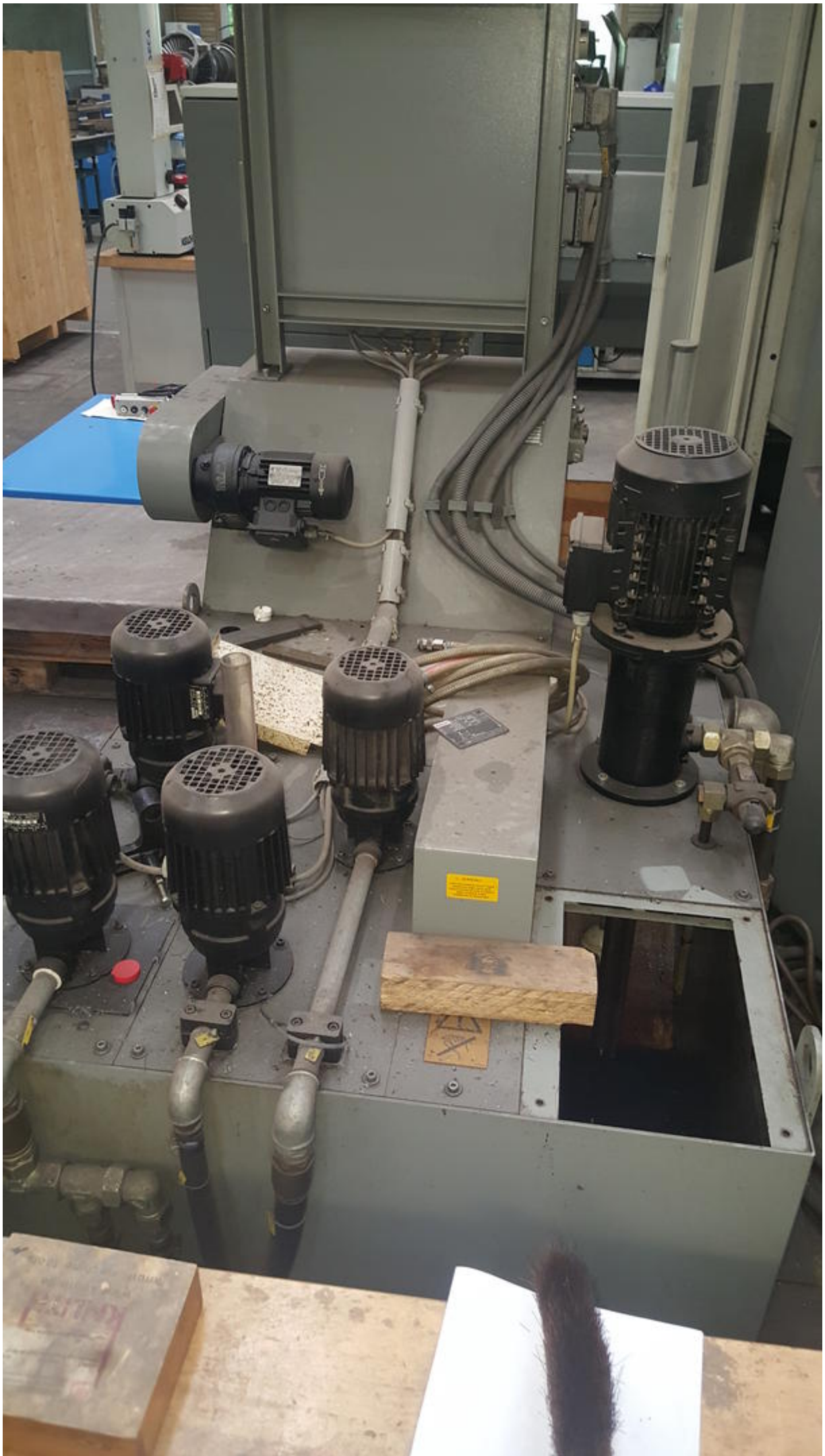
Auftrags- Nr.

Baujahr

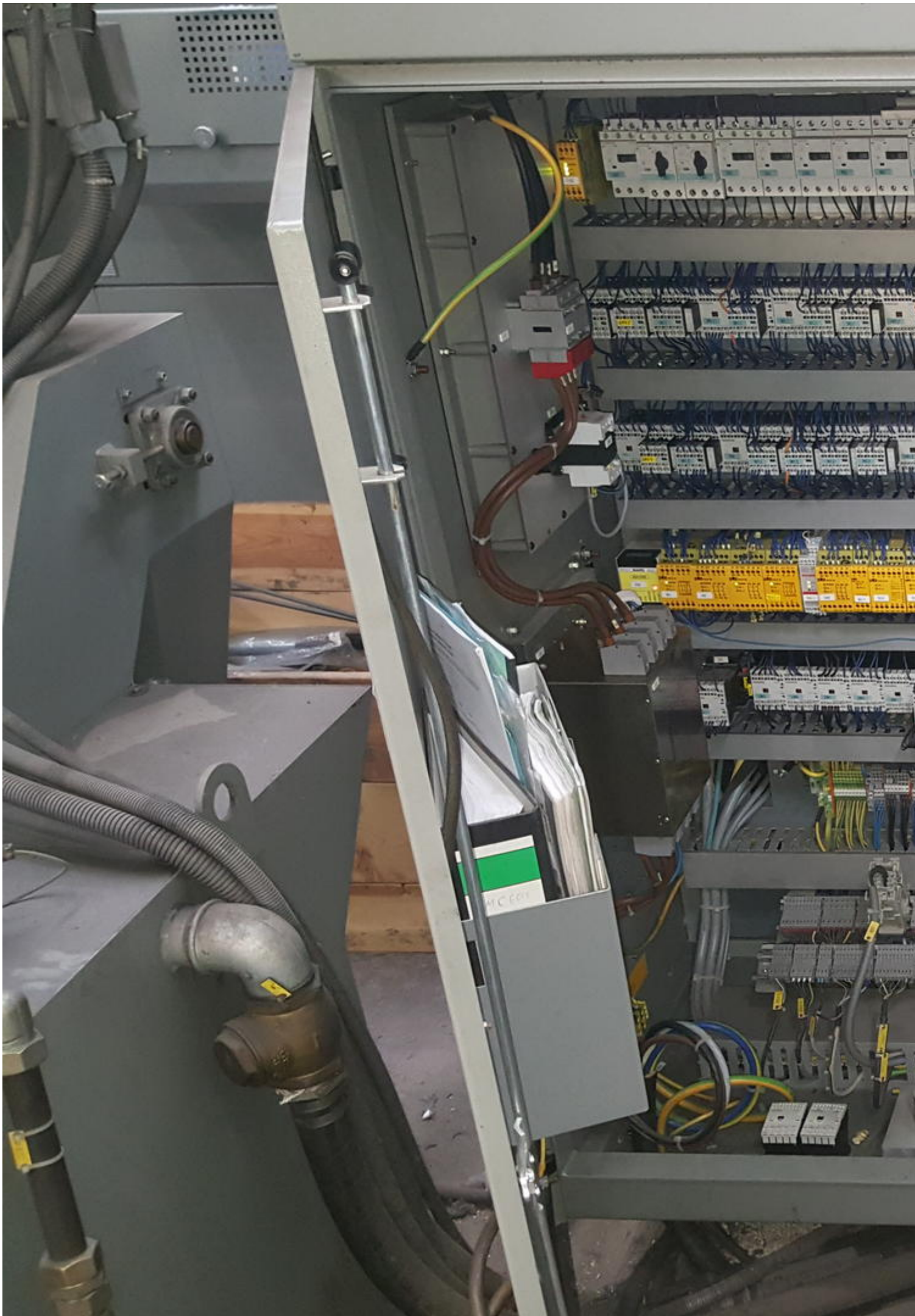
---

Interlin Jostigen GmbH Niederkasseler Str. 7 D-

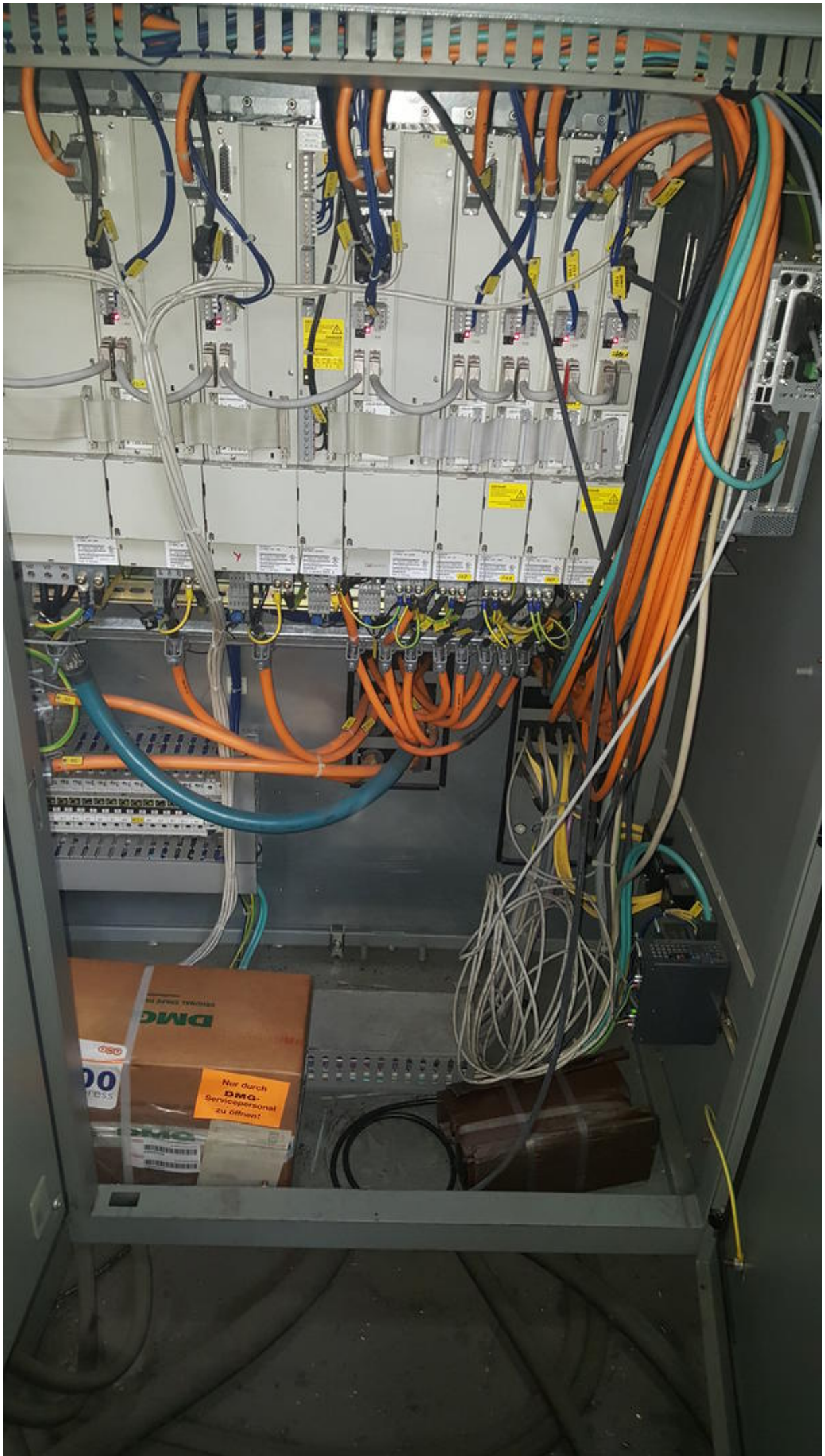








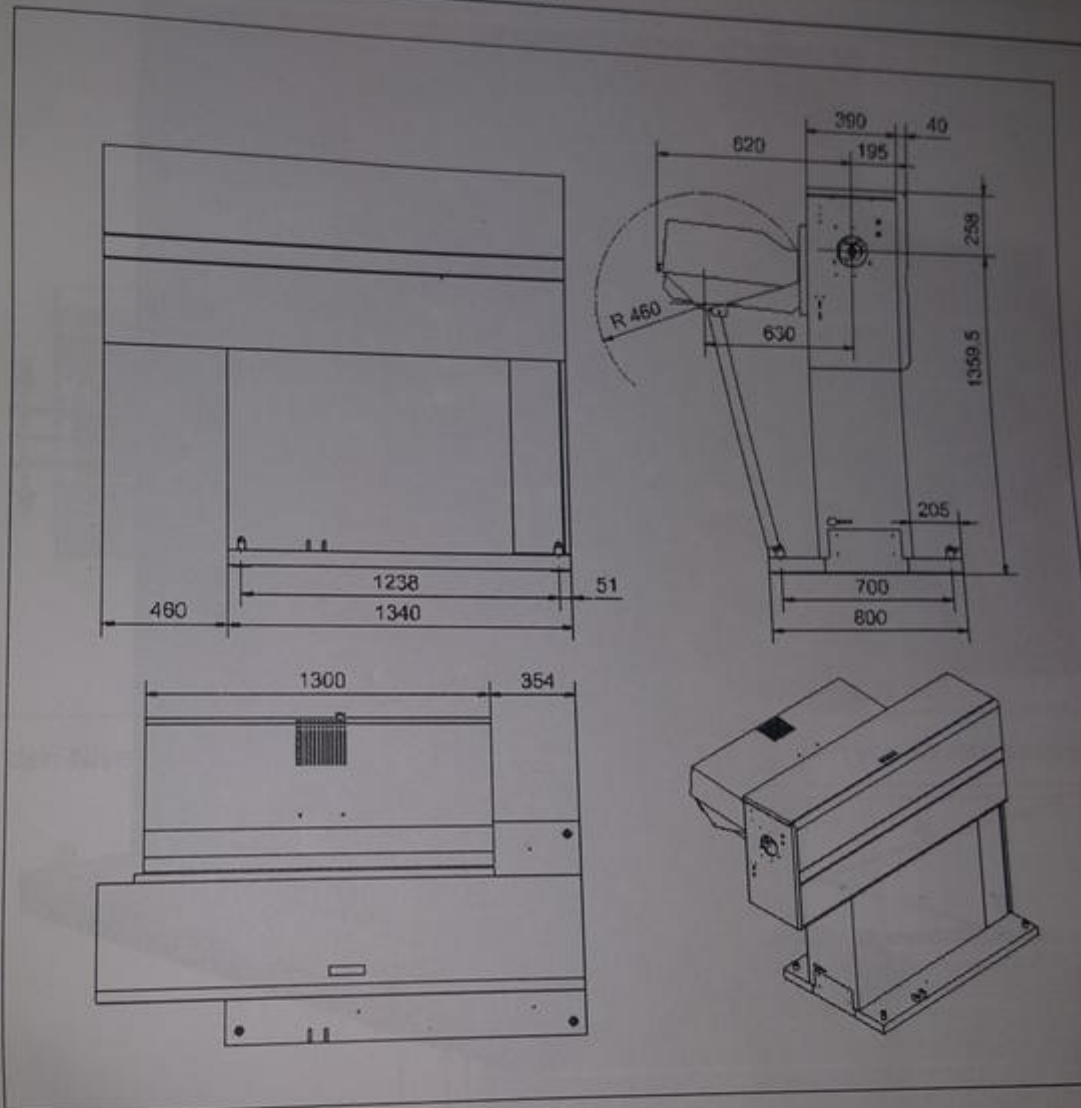






# 1 Installation des Stangenlademagazins

## 1.1 Maßzeichnung - Platzbedarf





# Geprüft

nach BGV .....

durch .....

**nächste Prüfung**





ufelfertigung  
ing services

MAHO



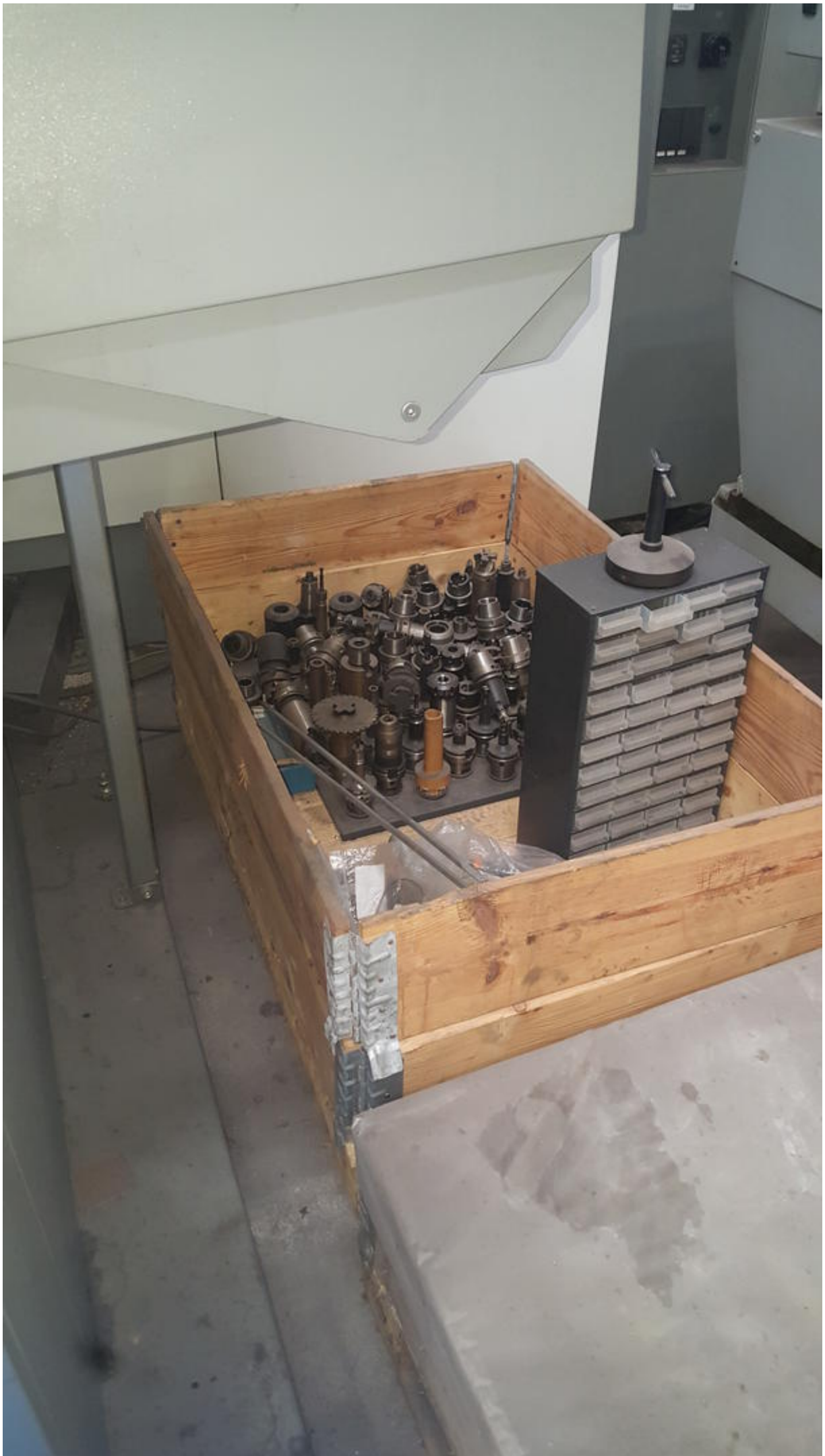


















SIEMENS

Inbetrieb  
nahme

CHAN1



Kanal unterbrochen



Halt: kein NC - Re

4060 ↓ : Sta

Maschinenkonfiguration

Maschinenachse

Index Name

1 X1

2 Y1

3 Z1

4 A1

DECKEL MA

Version 1.0

Schlüssel  
schalter

Bus  
Dia





















Asset-Trade

Assessment and Sale of Used Assets world wide

Am Sonnenhof 16

47800 Krefeld

Germany

Tel.: +49 2151 32500 33

Fax.: +49 2151 65 29 22

Email: [info@asset-trade.de](mailto:info@asset-trade.de)

Web.: <https://mail.asset-trade.de/en>

Generated on 17.04.2026

© Copyright 2026 - [Asset-Trade](#)

Page