



# Asset-Trade

Assessment & Sale of Used Assets

Ref. No.: 701-01051447

## Overview and Technical Data:

**NAKAMURA-TOME - TMC 18 CNC Lathe with  
GR 103 loader**

**NAKAMURA-TOME**



**Nakamura-Tome**

Year of Build: Jan 1998



## Description:

### **Used NAKAMURA Tome TMC 18 CNC lathe with loading handling GR-103 without loading table**

Control Fanuc Serie 21-T

#### Technical Data

- Swing over bed 16" (400mm)
- Max diameter turned 11.2" (280mm)
- Max turning length 12.2" (305mm)
- X-axis travel 10.1" (254mm)
- Z-axis travel 12" (300mm)
- Spindle nose type A2-6"
- Spindle bore 2.3" (58mm)
- Bar capacity 2" (51mm)
- Tool capacity 10
- Spindle drive motor 15 HP (11.19 KW)
- Electrics 220/440/3/60 HZ
- Spindle speed range 50-4500 RPM
- Approx Gross weight 5,300 LBS
- Approx Dimensions (L x W x H) 64" x 58" x 64"

#### Others

- Central greasing
- Transformer for voltage conversion
- Chip conveyor
- hydraulic power unit



## Technical Data:

### Technical Data:

Control: Series 21i  
Turning length: 305.00 mm  
Turning diameter: 280.00 mm  
Spindle Speed: 4500.00 rpm  
Tool Capacity: 10 x  
Tailstock: No  
Bezel: No

### Dimensions and Weight:

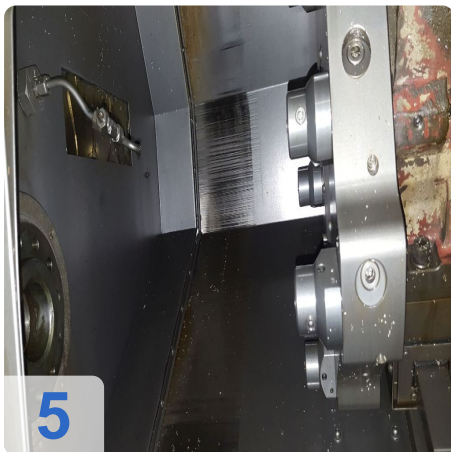
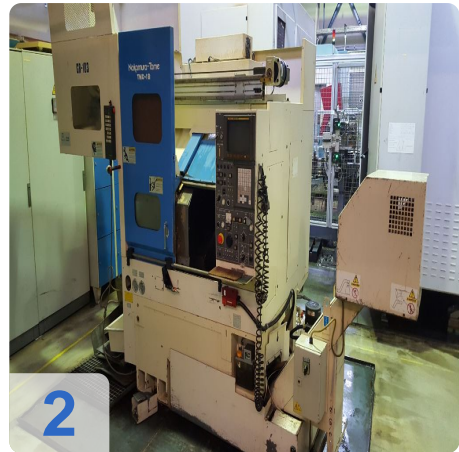
Weight: 2500 kg

### Buyer Information:

Condition: Normal wear  
Available: On Request  
Sold as:  
EXW (Ex Works - Incoterm)  
VAT: 19 %  
Buyers Premium: 15 %  
Location: Germany



## Images:







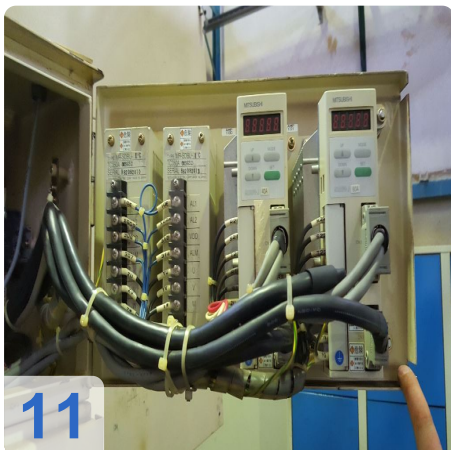
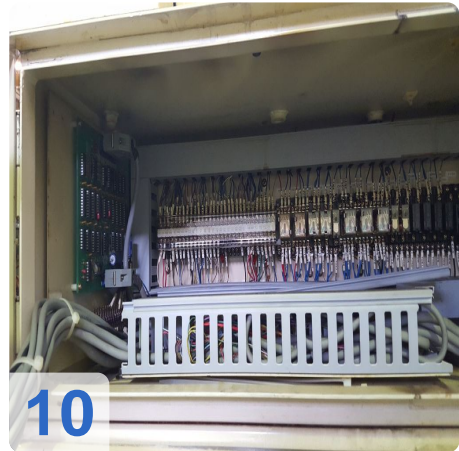
AS

e

Assets

# Nakamura-Tome TMC-18

6

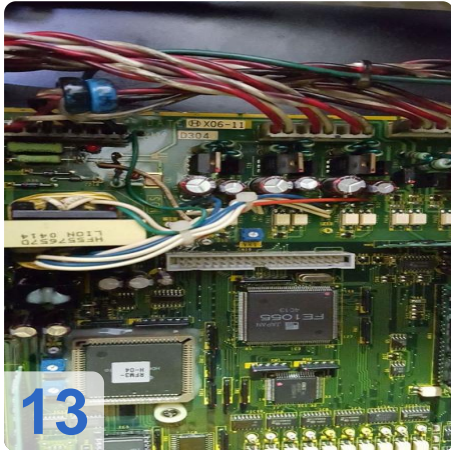
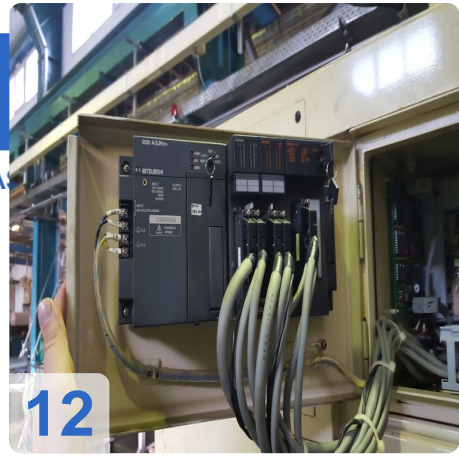




A

e

Assets





# Asset-Trade

Assessment & Sale of Used Assets



# Asset-Trade

Assessment & Sale of Used Assets



**Asset-Trade**

**Assessment and Sale of Used Assets world  
wide**

**Am Sonnenhof 16**

**47800 Krefeld**

**Germany**

**Tel.: +49 2151 32500 33**